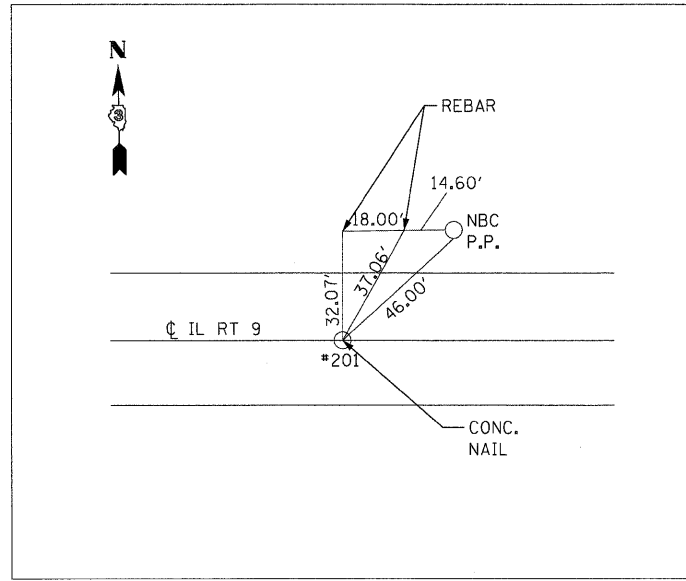
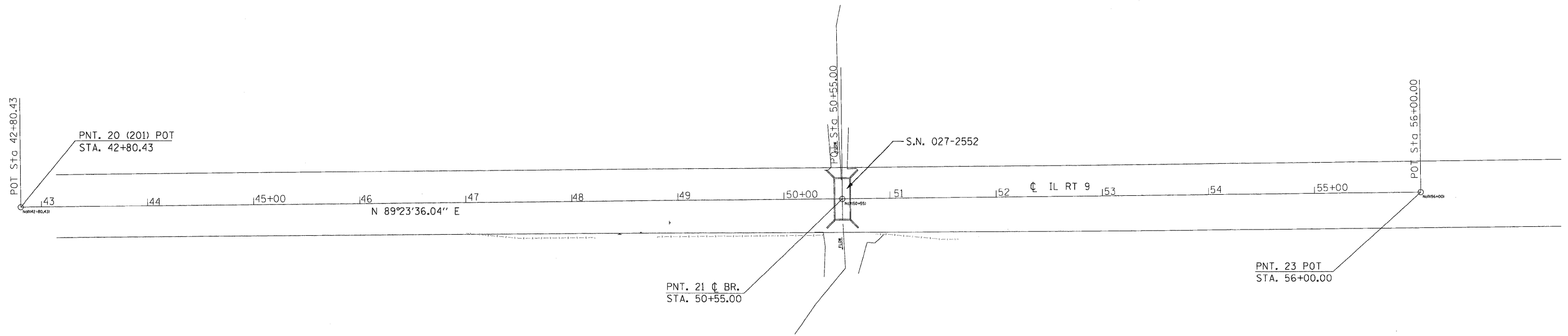
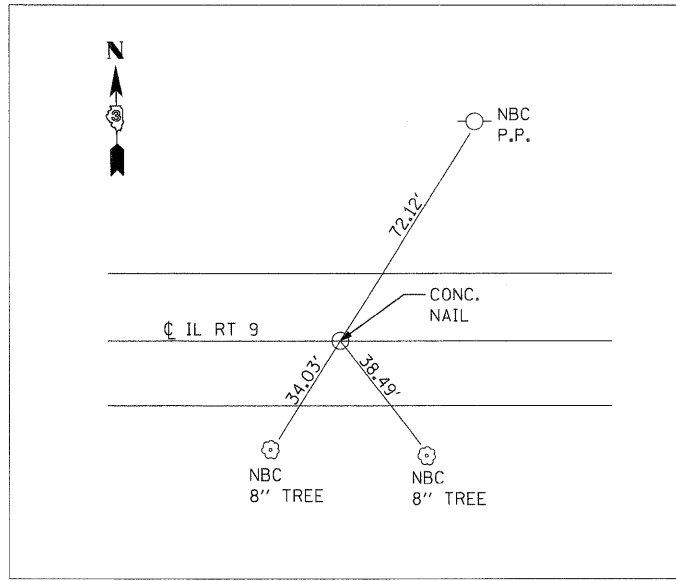


DATE	
BY	
REVIEWED	
PLANNED	
ALIGNED	
CHECKED	
FILE NAME	
NO.	

DATE	
BY	
REVIEWED	
PLANNED	
ALIGNED	
CHECKED	
FILE NAME	
NO.	



PNT. #20 POT (N.T.S)  
STA. 42+80.43



PNT. #23 POT (N.T.S)  
STA. 56+00

BENCHMARK #1  
RAILROAD SPIKE IN POWER POLE NORTH SIDE OF RT. 9  
NORTH OF WEST END OF GUARDRAIL.  
STA. 50+03, 32' LT. ELEV.= 747.16

BENCHMARK #2  
RAILROAD SPIKE IN POWER POLE NORTH SIDE  
OF RT. 9, 230'± WEST OF BOX CULVERT.  
STA. 47+91, 30' LT. ELEV.= 747.18

FILE NAME =	USER NAME = #USER#	DESIGNED DB	REVISED -	<b>STATE OF ILLINOIS DEPARTMENT OF TRANSPORTATION</b>	<b>ALIGNMENT, TIES AND BENCHMARKS</b>			F.A.P. RTE.	SECTION	COUNTY	TOTAL SHEETS	SHEET NO.
#FILE#	PLOT SCALE = #SCALE#	DRAWN NS/RM	REVISED -					697	(17)	FORD	29	8
	PLOT DATE = #DATE#	CHECKED AS	REVISED -		SCALE: 1"=20' SHEET NO. 1 OF SHEETS STA. TO STA.			CONTRACT NO. 66874				
		DATE MARCH 2009	REVISED -		FED. ROAD DIST. NO. ILLINOIS FED. AID PROJECT							