

F.A.P. RTE.	SECTION	COUNTY	TOTAL SHEETS	SHEET NO.
697	(13)RS-6	FORD	8	1
FED. ROAD DIST. NO.	ILLINOIS	CONTRACT NO. 66900		

STATE OF ILLINOIS
DEPARTMENT OF TRANSPORTATION
DIVISION OF HIGHWAYS

PROPOSED
HIGHWAY PLANS

FAP ROUTE 697 (IL 9)
SECTION (13)RS-6

FORD COUNTY
C-93-041-09

CAPE SEAL RESURFACING FROM PAXTON TO
THE VERMILION COUNTY LINE

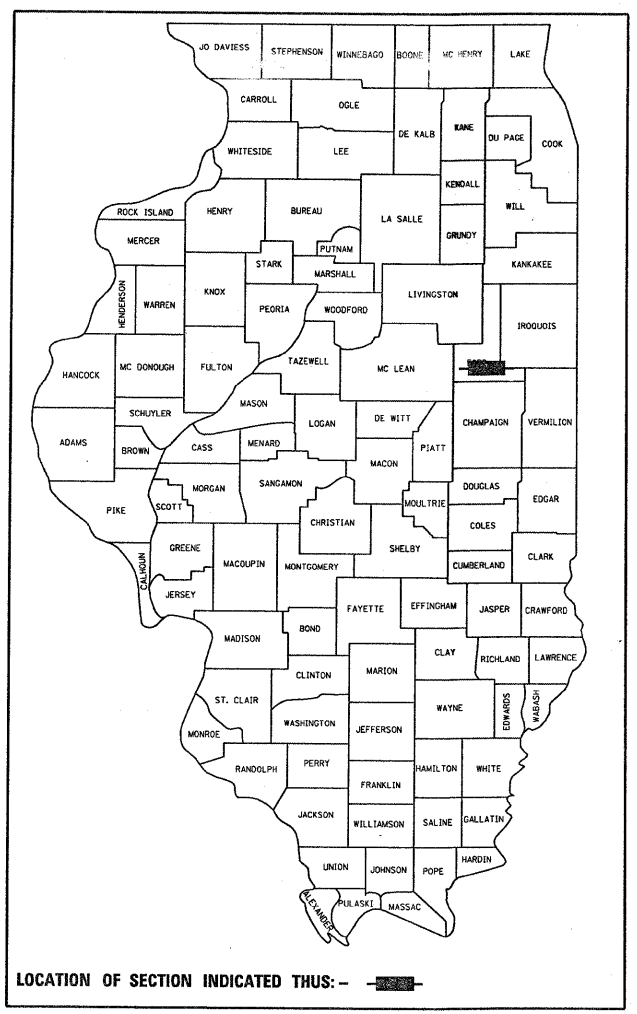
D-93-019-09

INDEX OF SHEETS

- 1 COVER SHEET
- 2 GENERAL NOTES
- 3 SUMMARY OF QUANTITIES
- 4 TYPICAL SECTIONS
- 5 SCHEDULES
- 6 TIE POINTS
- 7 PROJECT LAYOUT
- 8 MISC DETAILS

STANDARDS

- 000001-05 STANDARD SYMBOLS, ABBREVIATIONS AND PATTERNS
- 667101-01 PERMANENT SURVEY MARKERS
- 701301-03 LANE CLOSURE, 2L, 2W, SHORT TIME OPERATIONS
- 701306-02 LANE CLOSURE, 2L, 2W, SLOW MOVING OPERATIONS DAY ONLY, FOR SPEEDS GREATER THAN OR EQUAL TO 45 MPH
- 701311-03 LANE CLOSURE, 2L, 2W, MOVING OPERATIONS - DAY ONLY
- 701901-01 TRAFFIC CONTROL DEVICES
- 780001-02 TYPICAL PAVEMENT MARKINGS
- 781001-03 TYPICAL APPLICATIONS RAISED REFLECTIVE PAVEMENT MARKERS



LOCATION OF SECTION INDICATED THUS: - [shaded area] -

RURAL MINOR ARTERIAL
2009 ADT = 2100
P.V. = 82%
S.U. = 6%
M.U. = 12%

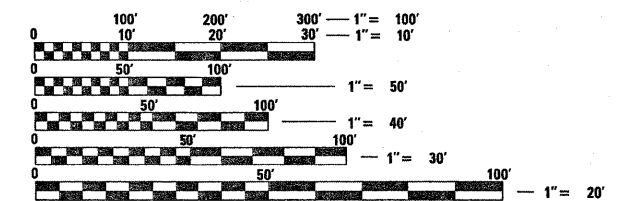
STATE OF ILLINOIS
DEPARTMENT OF TRANSPORTATION
DIVISION OF HIGHWAYS

SUBMITTED 11271 2009

John E. Brown
DEPUTY DIRECTOR OF HIGHWAYS, REGION ENGINEER

March 27, 2009
Charles G. Ingersoll
ENGINEER OF DESIGN AND ENVIRONMENT

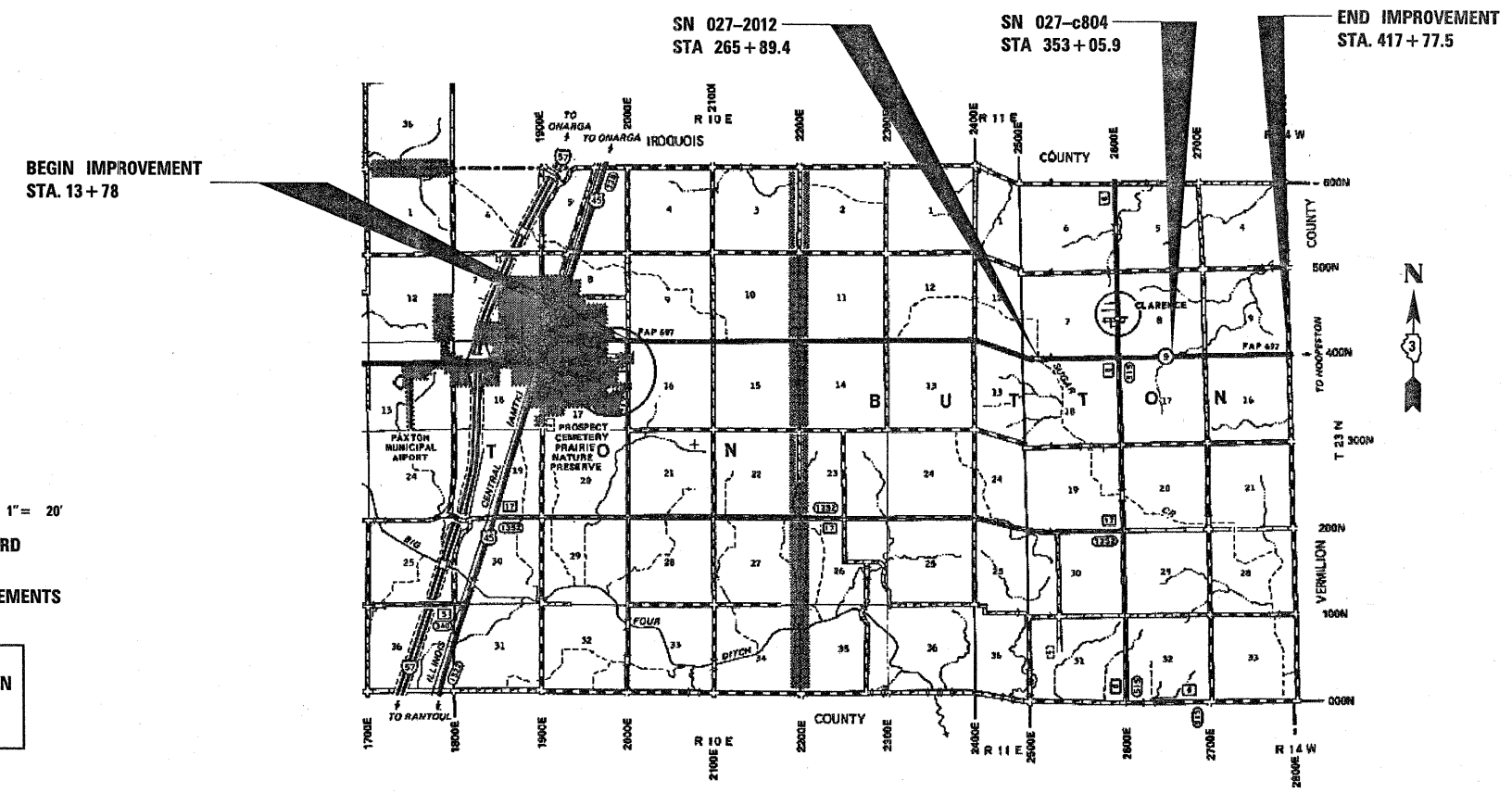
March 27, 2009
Christine M. Reed
DIRECTOR OF HIGHWAYS, CHIEF ENGINEER



FULL SIZE PLANS HAVE BEEN PREPARED USING STANDARD ENGINEERING SCALES. REDUCED SIZED PLANS WILL NOT CONFORM TO STANDARD SCALES. IN MAKING MEASUREMENTS ON REDUCED PLANS, THE ABOVE SCALES MAY BE USED.

J.U.L.I.E.
JOINT UTILITY LOCATION INFORMATION FOR EXCAVATION
1-800-892-0123
OR 811

DISTRICT 3 NO (815)434-6131
PROJECT ENGINEER: JOE KANNEL
UNIT CHIEF: MICHELE LINDEMANN
TOWNSHIPS: PATTON, BUTTON
CONTRACT NO. 66900



LOCATION MAP

NOT TO SCALE

GROSS LENGTH = NET LENGTH = 40399.5 FT. = 7.651 MILE

GENERAL NOTES

CAPE SEALING THROUGH INTERSECTIONS AND AT THE ENDS OF THE PROJECT SHALL HAVE THE EDGES TAPERED/FEATHERED OUT TWO TO THREE FEET BEYOND THE EDGE OF THE MAT. THE COST FOR TAPERS SHALL BE INCLUDED IN THE CONTRACT UNIT PRICE FOR CAPE SEAL, WITH PAY LIMITS WHERE CAPE SEALING ENDS.

THE AGGREGATE FOR THE A-1 SURFACE TREATMENT (THE FIRST PASS OF CAPE SEALING) SHALL BE CA 20 COURSE AGGREGATE CONFORMING TO ARTICLE 1004.01(c).

THE CONTRACTOR SHALL DEVISE AND SUBMIT A JOINT PLAN THAT MEETS THE APPROVAL OF THE ENGINEER.

THE ENGINEER WILL BE THE SOLE JUDGE CONCERNING CURING TIME FOR THE VARIOUS BITUMINOUS LIFTS.

ON EXISTING PAVEMENT WHICH MAY BE SUPERELEVATED, THE NEW BITUMINOUS PAVEMENT SHALL BE BUILT WITH THE SAME SUPERELEVATION UNLESS NEW SUPERELEVATION RATES ARE GIVEN ON THE PLANS.

ANY REFERENCE TO A STANDARD IN THESE PLANS SHALL BE INTERPRETED TO MEAN THE EDITION AS INDICATED BY THE SUBNUMBER SHOWN IN THE LIST OF STANDARDS INCLUDED IN THESE PLANS.

THE FOLLOWING RATES OF APPLICATION HAVE BEEN USED IN CALCULATING PLAN QUANTITIES:

MICROSURFACING, SINGLE PASS, TYPE II	24	LBS / SQ YD
SHORT TERM PAVEMENT MARKING	10	FT /100 FT OF APPLICATION

THE CONTRACTOR SHALL CONTACT JULIE AT LEAST 48 HOURS PRIOR TO EXCAVATION TO DETERMINE WHICH UTILITIES ARE IN THE AREA.

STATE OF ILLINOIS
DEPARTMENT OF TRANSPORTATION
DISTRICT THREE

PREPARED BY: *D. Powell*
DISTRICT STUDIES & PLANS ENGINEER

DATE: JANUARY 27, 2009

EXAMINED BY: *Frank Perry*
DISTRICT CONSTRUCTION ENGINEER

Wayne Phillips
DISTRICT MATERIALS ENGINEER

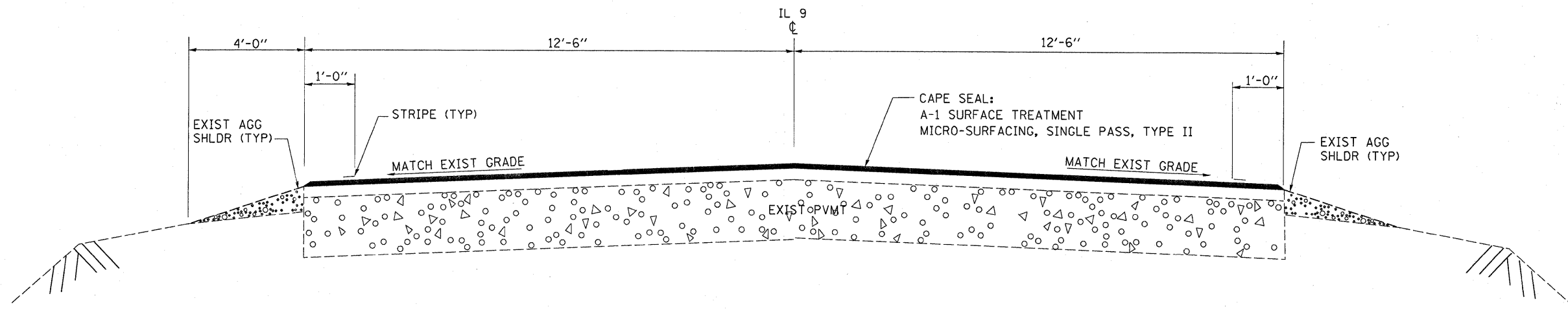
James A. Wucher
DISTRICT OPERATIONS ENGINEER

FILE NAME =	USER NAME = carpenterdj	DESIGNED -	REVISED -	STATE OF ILLINOIS DEPARTMENT OF TRANSPORTATION	GENERAL NOTES	F.A.P. RTE.	SECTION	COUNTY	TOTAL SHEETS	SHEET NO.	
et\pwork\PWIDOT\CARPENTERDJ\dms87112	1366900-shr-details.dgn	DRAWN -	REVISED -			697	(13)RS-6	FORD	8	2	
PLOT SCALE = 50,0000 ' / IN.	CHECKED -	REVISED -				CONTRACT NO. 66900					
PLOT DATE = Jan 27, 2009 - 09:46:01 AM	DATE -	REVISED -				SCALE:	SHEET NO.	OF	SHEETS	STA.	TO STA.

SUMMARY OF QUANTITIES				100% STATE	
CODE NO.	CONSTRUCTION CODE TYPE: ITEM	UNIT	TOTAL QUANTITY	I000	SFTY-2A
				ROADWAY QUANTITY	027-2012 CULVERT QUANTITY
66700205	PERMANENT SURVEY MARKERS, TYPE I ✓	EACH	4	4	
67100100	MOBILIZATION	L SUM	1	1	
70100460	TRAFFIC CONTROL AND PROTECTION, STANDARD 701306 ✓	L SUM	1	1	
70300100	SHORT-TERM PAVEMENT MARKING	FOOT	4044	4044	
70301000	WORK ZONE PAVEMENT MARKING REMOVAL	SQ FT	1348	1348	
• 78001110	PAINT PAVEMENT MARKING - LINE 4" ✓	FOOT	85579	85579	
• 78001130	PAINT PAVEMENT MARKING - LINE 6" ✓	FOOT	10110	10110	
• 78100100	RAISED REFLECTIVE PAVEMENT MARKER ✓	EACH	506	506	
78100200	TEMPORARY RAISED REFLECTIVE PAVEMENT MARKER	EACH	2022	2022	
78300100	PAVEMENT MARKING REMOVAL ✓	SQ FT	33581	33581	
78300200	RAISED REFLECTIVE PAVEMENT MARKER REMOVAL	EACH	506	506	
X0324951	CAPE SEAL ✓	SQ YD	112337	112275	62
X0326219	BUMP REMOVAL ✓	EACH	46	46	
X0326439	FIBER-MODIFIED ASPHALT CRACK SEALING ✓	POUND	26192	26192	

• SPECIALTY ITEM

FILE NAME =	USER NAME = carpenterdj	DESIGNED -	REVISED -	STATE OF ILLINOIS DEPARTMENT OF TRANSPORTATION	SUMMARY OF QUANTITIES				F.A.P. RTE.	SECTION	COUNTY	TOTAL SHEETS	SHEET NO.		
ca:\pwwork\VPW1001\CARPENTERDJ\dms87112	3366300-sht-details.dgn	DRAWN -	REVISED -		SCALE:	SHEET NO.	OF	SHEETS	STA.	TO STA.	697	(13)RS-6	FORD	8	3
	PLOT SCALE = 50.0000' / IN.	CHECKED -	REVISED -						CONTRACT NO. 66900						
	PLOT DATE = Jan 27, 2009 - 09:46:26 AM	DATE -	REVISED -						ILLINOIS FED. AID PROJECT						



TYPICAL SECTION

13+78 TO 417+77.5

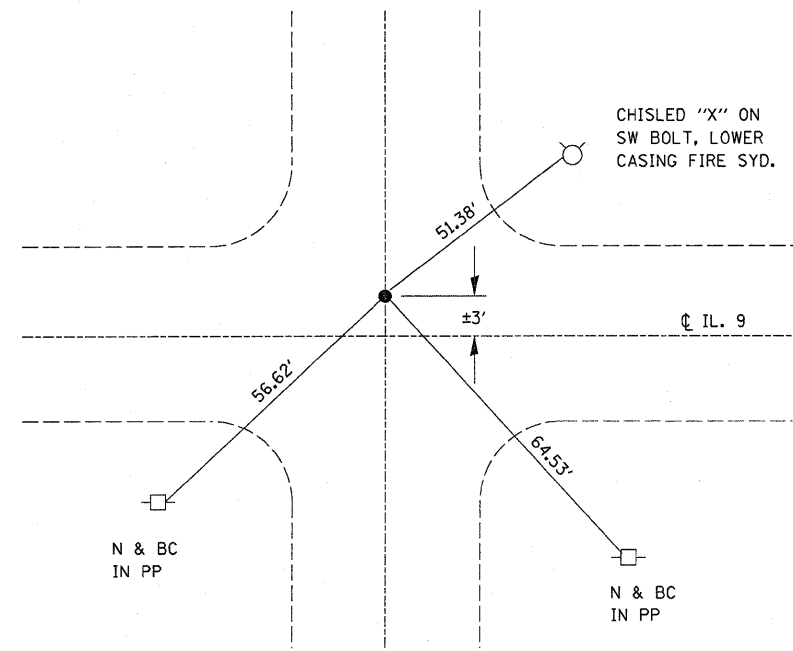
FILE NAME =	USER NAME = carpenterdj	DESIGNED -	REVISED -	STATE OF ILLINOIS DEPARTMENT OF TRANSPORTATION	TYPICAL SECTIONS				F.A.P. RTE.	SECTION	COUNTY	TOTAL SHEETS	SHEET NO.
ct:\pwork\NPWIDOT\CARPENTERD\j\mas87112	3366900-sht-details.dgn	DRAWN -	REVISED -						697	(13)RS-6	FORD	8	4
PLOT SCALE = 50,0000 ' / IN.	CHECKED -	REVISED -	REVISED -		CONTRACT NO. 66900								
PLOT DATE = Jan 27, 2009 - 09:46:44 AM	DATE -	REVISED -	REVISED -		SCALE:	SHEET NO.	OF SHEETS	STA. TO STA.	FED. ROAD DIST. NO.	ILLINOIS FED. AID PROJECT			

RESURFACING SCHEDULE					
LOCATION	DESCRIPTION	LENGTH	CAPE SEAL	BUMP REMOVAL	FIBER-MOD ASPHALT CRACK FILLING
			SQ YD	EACH	POUND
13+36 TO 265+78.2		25242.2	70117	29	16357
265+78.2 TO 266+00.6	SN 027-2012	22.4	62		
266+00.6 TO 417+77.5		15176.9	42158	17	9835
TOTAL		40441.5	112337	46	26192

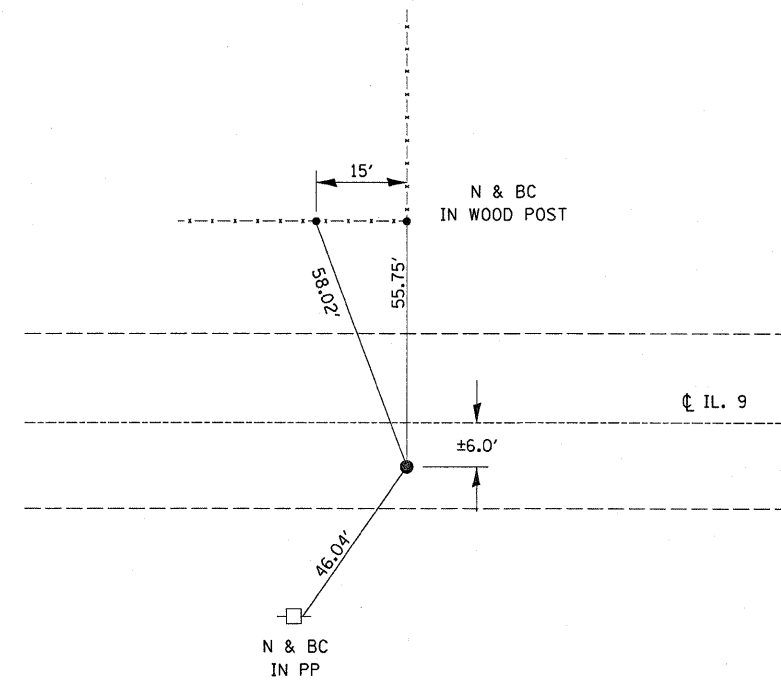
PAVEMENT MARKING SCHEDULE											
LOCATION	DESCRIPTION	LENGTH	PAINT PVMT MARK		PAINT PVMT MARK	PAVEMENT MARKING REMOVAL	TEMP FLEX PVMT MARKERS	SHORT TERM PVMT MARKING	WORK ZONE PVMT MARK REMOVAL	RAISED REF PVMT MARKER REMOVAL	RAISED REF PVMT MARKER
			WHITE 4"	YELLOW 4"	YELLOW 6"						
			FOOT	FOOT	FOOT	SQ FT	EACH	FOOT	SQ FT	EACH	EACH
13+36 to 417+77.5		40441.5	80883		10110	32016	2022	4044	1348	506	506
255+15 TO 262+50, RT	NO PASSING ZONE	735		735		245					
262+50 TO 272+50, LT	NO PASSING ZONE	1000		1000		333					
291+70 TO 299+75, RT	NO PASSING ZONE	805		805		268					
301+50 TO 309+40, LT	NO PASSING ZONE	790		790		263					
363+00 TO 370+10, RT	NO PASSING ZONE	710		710		237					
372+94 TO 379+50, LT	NO PASSING ZONE	656		656		219					
TOTAL			85579		10110	33581	2022	4044	1348	506	506

NOTE: NO PASSING ZONES SHALL BE REPLACED

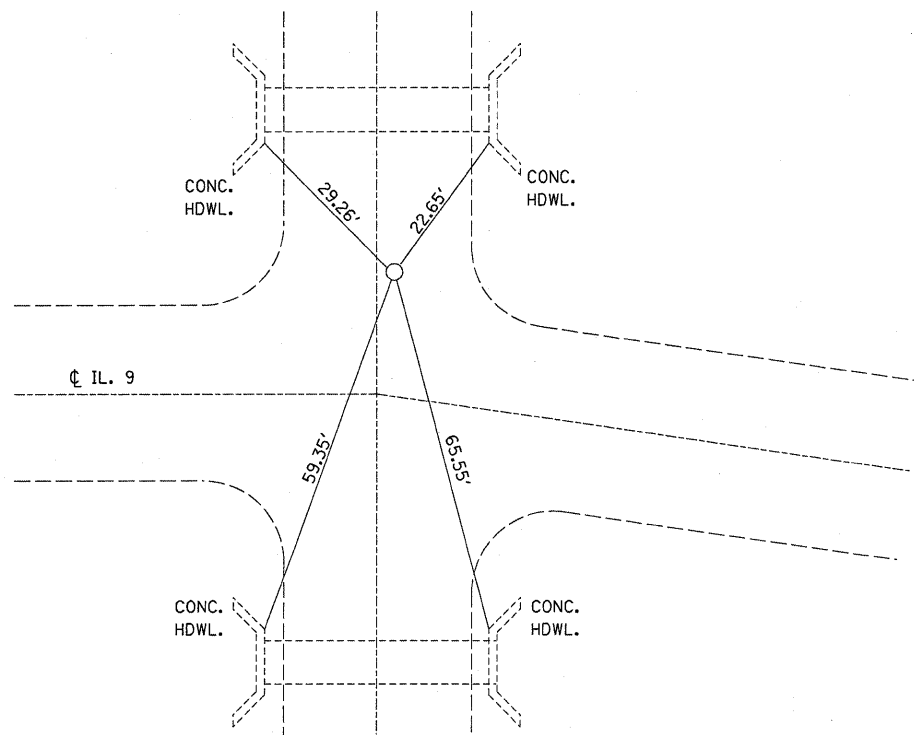
FILE NAME =	USER NAME = carpenterdj	DESIGNED -	REVISED -	STATE OF ILLINOIS DEPARTMENT OF TRANSPORTATION	SCHEDULES OF QUANTITIES				F.A.P. RTE.	SECTION	COUNTY	TOTAL SHEETS	SHEET NO.
of\pwwork\VPWIDOT\CARPENTERDJ\dms97112	366900-sht-detail.dgn	DRAWN -	REVISED -						697	(13)RS-6	FORD	8	5
PLOT SCALE = 50.0000' / IN.	CHECKED -	REVISED -	REVISED -		SCALE: SHEET NO. OF SHEETS STA. TO STA.				FED. ROAD DIST. NO. ILLINOIS FED. AID PROJECT				
PLOT DATE = Jan 27, 2009 - 09:46:53 AM	DATE -	REVISED -	REVISED -						CONTRACT NO. 66900				



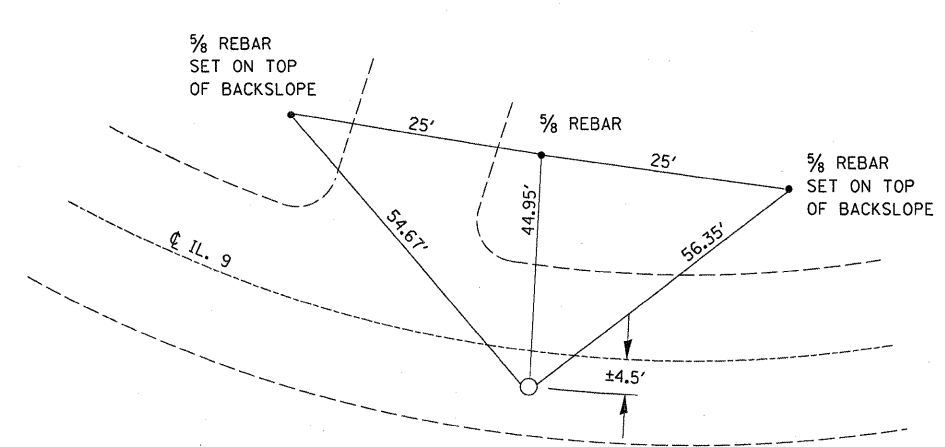
PK NAIL- REPLACE WITH PERMANENT SURVEY MARKER, TY 1
S.E. COR. SEC. 8
STA. 13+36



PK NAIL- REPLACE WITH PERMANENT SURVEY MARKER, TY 1
N 1/4 COR. SEC. 16
STA. 39+45

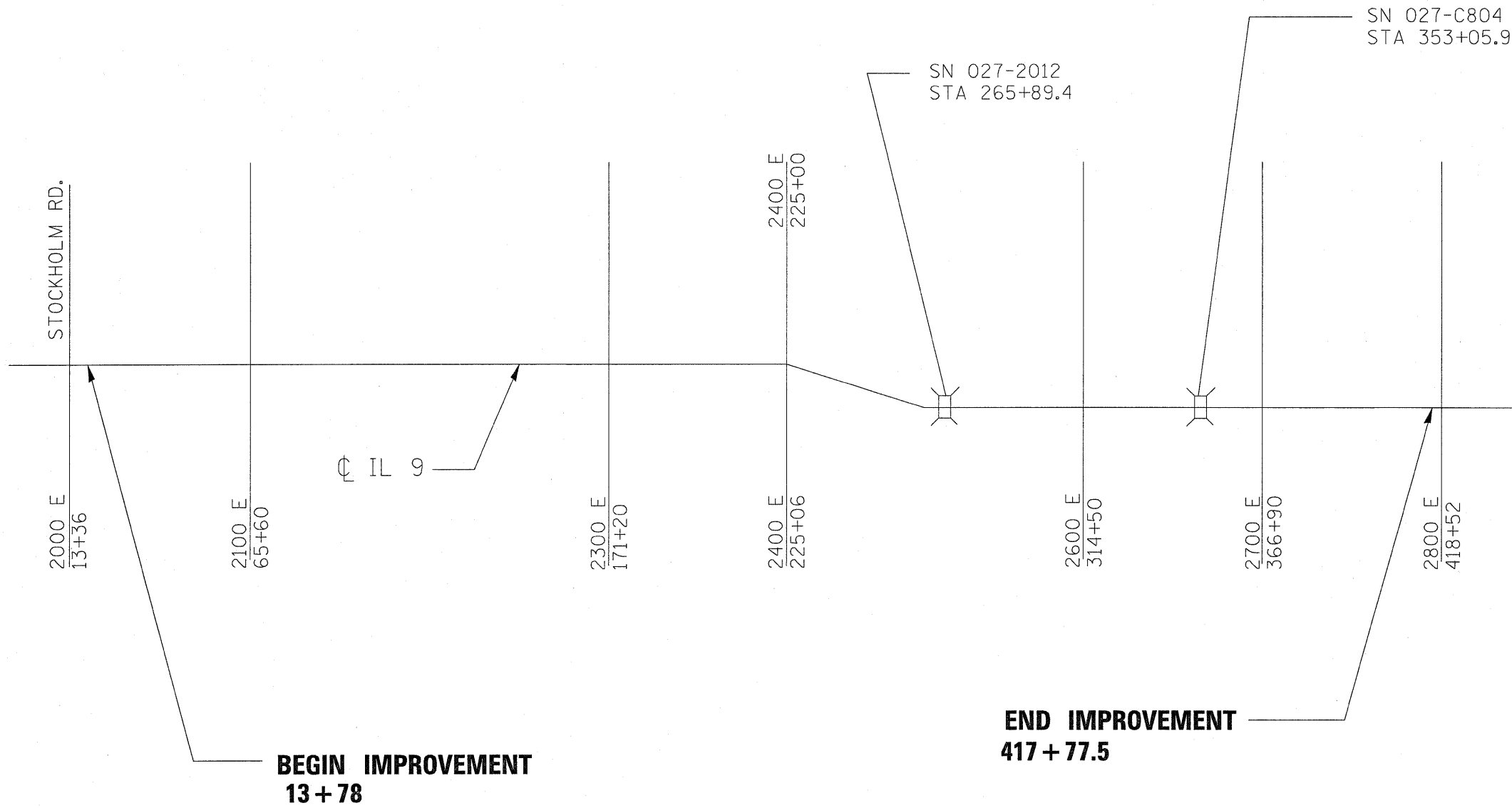


IRON PIPE W/ ALUM. CAP- REPLACE WITH PERMANENT SURVEY MARKER, TY 1
S.W. COR. SEC. 12
STA. 225+06



IRON PIPE W/ ALUM. CAP- REPLACE WITH PERMANENT SURVEY MARKER, TY 1
S.E. COR. SEC. 12
STA. 255+87

FILE NAME =	USER NAME = carpenterdj	DESIGNED -	REVISED -	STATE OF ILLINOIS DEPARTMENT OF TRANSPORTATION	TIE POINTS				F.A.P. RTE.	SECTION	COUNTY	TOTAL SHEETS	SHEET NO.		
ca:\pwork\pwork\WIDOT\CARPENTERD.J\dms97112	3366900-shit-details.dgn	DRAWN -	REVISED -		SCALE:	SHEET NO.	OF	SHEETS	STA.	TO STA.	697	(13)RS-6	FORD	8	6
	PLOT SCALE = 50.0000' / IN.	CHECKED -	REVISED -		CONTRACT NO. 66900										
	PLOT DATE = Jan 27, 2009 - 09:47:05 AM	DATE -	REVISED -		FED. ROAD DIST. NO. ILLINOIS FED. AID PROJECT										



N

 NOT TO SCALE

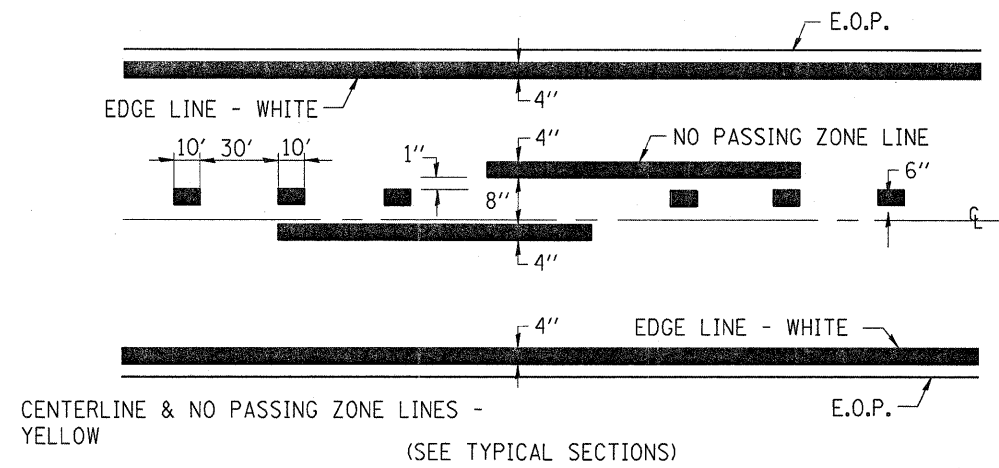
FILE NAME =	USER NAME = carpenterdj	DESIGNED -	REVISED -
c:\pwork\PIWIDOT\CARPENTERDJ\dms87112\366900-shr-details.dgn		DRAWN -	REVISED -
	PLOT SCALE = 50.0000' / IN.	CHECKED -	REVISED -
	PLOT DATE = Jan 27, 2009 - 09:59:01 AM	DATE -	REVISED -

**STATE OF ILLINOIS
 DEPARTMENT OF TRANSPORTATION**

PROJECT LAYOUT

SCALE: SHEET NO. OF SHEETS STA. TO STA.

F.A.P. RTE.	SECTION	COUNTY	TOTAL SHEETS	SHEET NO.
697	(13)RS-6	FORD	8	7
FED. ROAD DIST. NO.			ILLINOIS FED. AID PROJECT	
CONTRACT NO. 66900				



PAVEMENT MARKING

FILE NAME =	USER NAME = carpenterdj	DESIGNED -	REVISED -	STATE OF ILLINOIS DEPARTMENT OF TRANSPORTATION	DETAILS	F.A.P. RTE.	SECTION	COUNTY	TOTAL SHEETS	SHEET NO.	
ca:\pwork\PWIDOT\CARPENTERD\dm387112\386900-sht-details.dgn	386900-sht-details.dgn	DRAWN -	REVISED -			697	(13)RS-6	FORD	8	8	
PLOT SCALE = 50.0000' / IN.		CHECKED -	REVISED -			CONTRACT NO. 66900					
PLOT DATE = Jan 27, 2009 - 09:47:22 AM		DATE -	REVISED -			SCALE:	SHEET NO.	OF	SHEETS	STA.	TO STA.