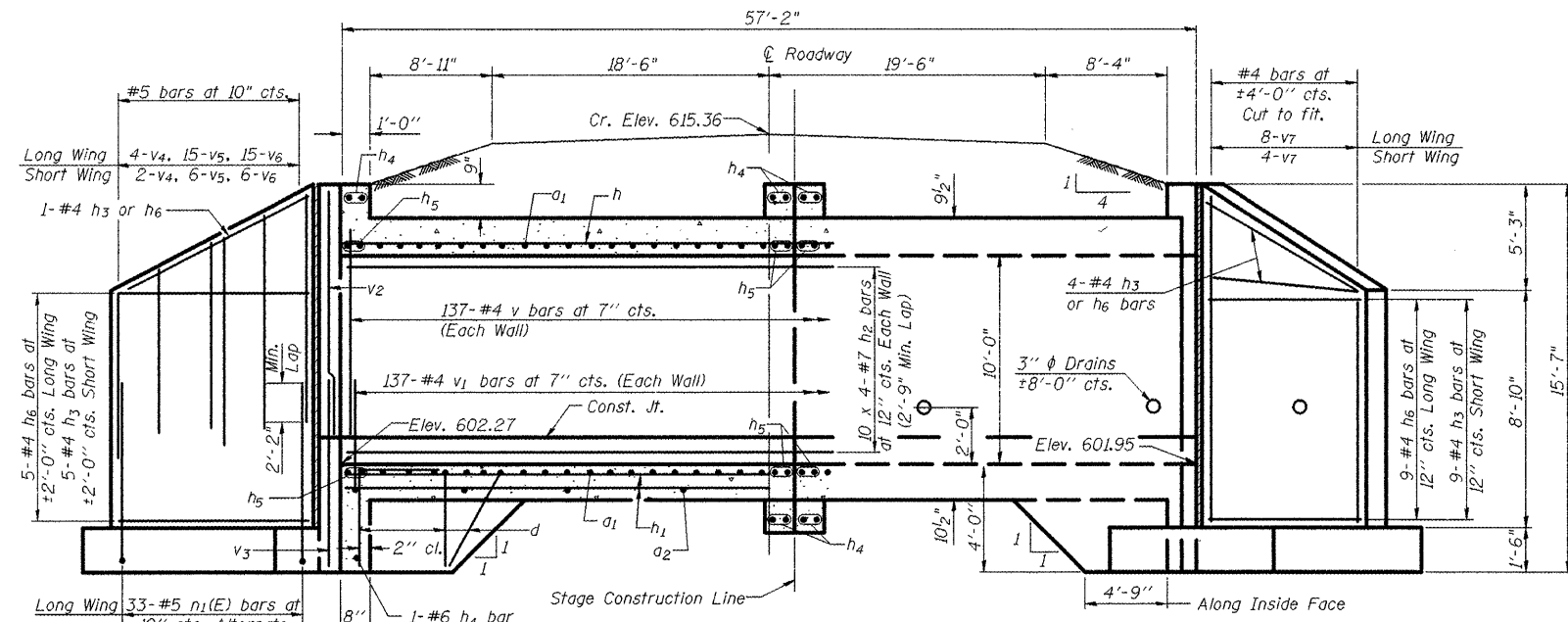


ROUTE	SECTION	COUNTY	TOTAL SHEETS	SHEET NO.
F.A.P. 665	*	FULTON	76	47
MKD. IL 116				

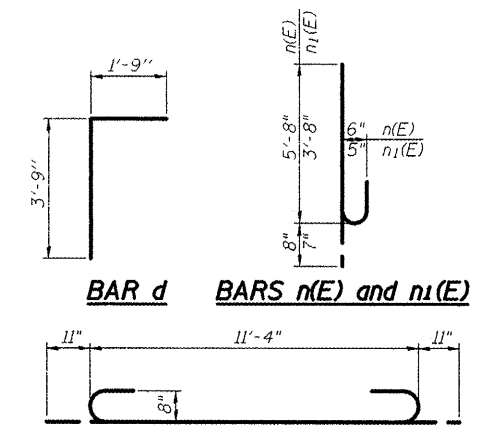
* 142 RS-6; 143[RS-4, (C-3)BR]; 142X(C-1)I



HALF LONG SECTION **HALF ELEVATION** **REINF.-FRONT FACE**

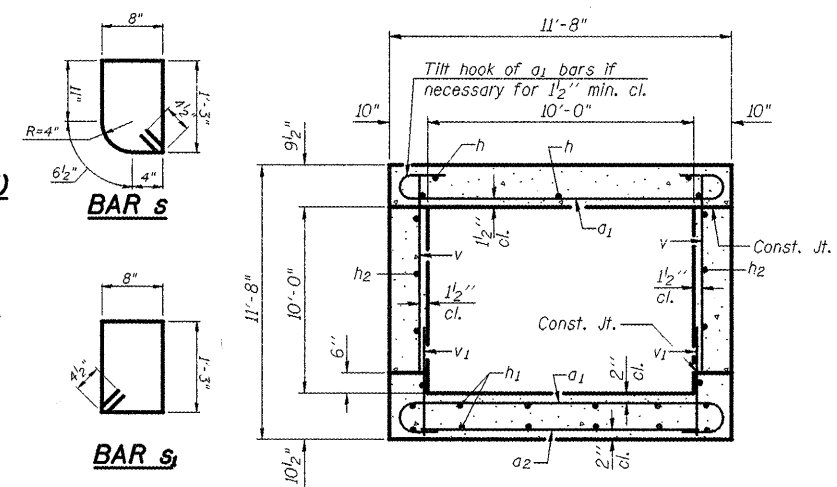
Dimensions at Rt. L's to \varnothing Roadway
 Headwalls at top and bottom of box at stage construction line have same dimensions as headwalls at culvert ends
 Longitudinal bars shall be spliced at stage construction line with Bar Splicer Assemblies

REINF.-BACK FACE
 Long Wing 33-#5 n1(E) bars at 10" cts. Alternate with 34-#6 n(E) bars at 10" cts.
 Short Wing 13-#5 n1(E) bars at 10" cts. Alternate with 14-#6 n(E) bars at 10" cts.

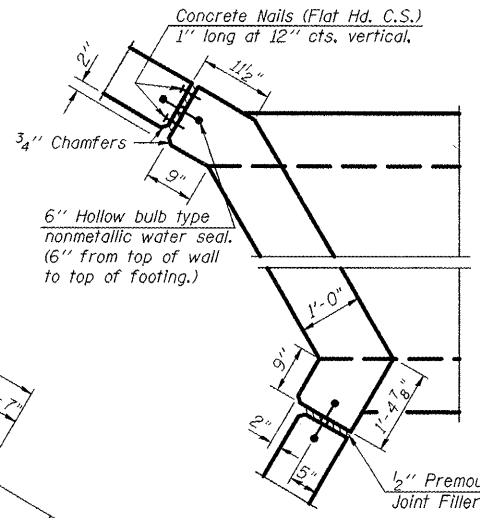


BAR d **BARS n(E) and n1(E)**

BAR a1



SECTION THRU BARREL



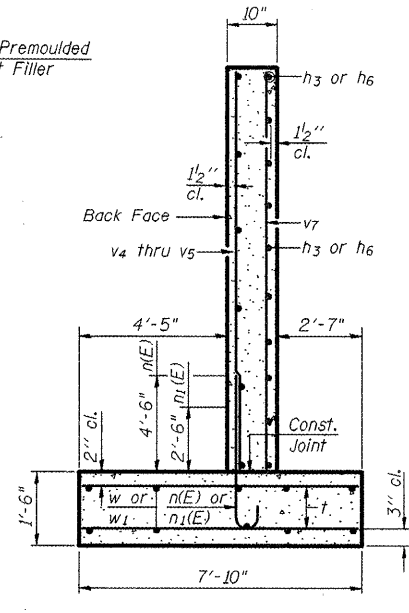
CORNER DETAIL

STATION 240+54.87
 BUILT 2009 BY
 STATE OF ILLINOIS
 F.A.P. 665 SEC. 143(C-8)BR
 LOADING HS20-44
 STRUCTURE NO. 029-2514

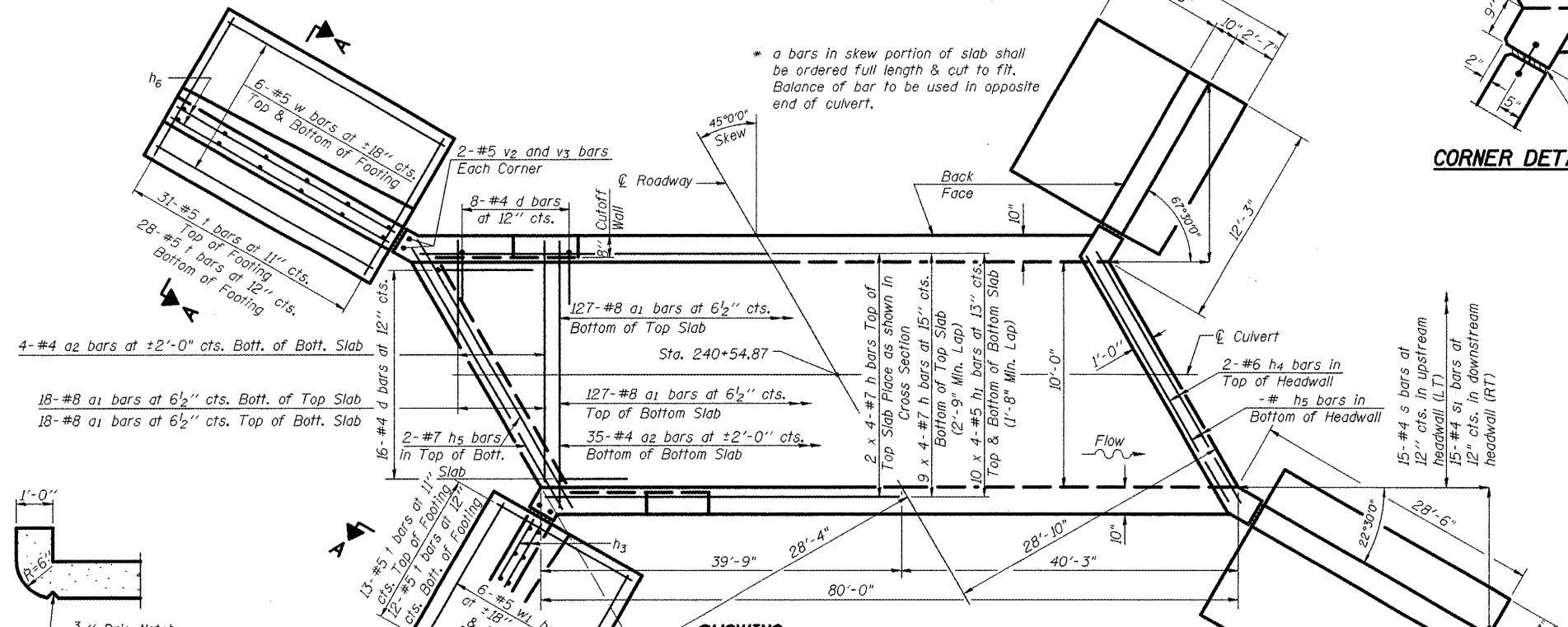
NAME PLATE
 See Std. 515001

BILL OF MATERIAL

Bar	No.	Size	Length	Shape
a1	290	#8	13'-2"	U
a2	39	#4	10'-3"	U
d	64	#4	5'-6"	J
h	33	#7	23'-6"	—
h1	60	#5	22'-6"	—
h2	60	#7	23'-6"	—
h3	19	#4	11'-1"	—
h4	14	#6	14'-0"	—
h5	16	#7	14'-0"	—
h6	19	#4	27'-4"	—
n(E)	96	#6	6'-4"	U
n1(E)	92	#5	4'-3"	U
s	15	#4	4'-6"	□
s1	15	#4	4'-7"	□
t	168	#5	7'-6"	—
v	274	#4	10'-2"	—
v1	274	#4	2'-5"	—
v2	8	#5	10'-9"	—
v3	8	#5	6'-2"	—
v4	12	#5	6'-10"	—
v5	42	#5	9'-2"	—
v6	42	#5	11'-6"	—
v7	24	#4	15'-0"	—
w	12	#5	27'-4"	—
w1	12	#5	11'-1"	—
Concrete Box Culverts	Cu. Yd.		143	
Bar Splicers	Each		51	
Reinforcement Bars, Epoxy Coated	Pound		1,321	
Reinforcement Bars	Pound		25,333	



SECTION A-A



SHOWING REINFORCEMENT PLAN **SHOWING OUTLINES**

NOTES
 Reinforcement Bars shall conform to the requirements of AASHTO M-31, M-42 or M-53, Grade 60.
 Bars indicated thus 12 x 4-#5 etc. indicates 12 lines of bars with 4 lengths per line.
 Reinforcement bars designated (E) shall be epoxy coated.
 All construction joints shall be bonded.

DESIGN STRESSES

$f_y = 60,000$ psi
 $f'_c = 3,500$ psi
 Max. Soil Pressure under footing = 3000 psf

LOADING HS 20-44 & ALT.

SECTION THRU HEADWALL
 (Up Stream End Only)

SSB-T2-L 10-22-04

REVISIONS	
NAME	DATE

ILLINOIS DEPARTMENT OF TRANSPORTATION
CULVERT DETAIL
 IL Route 116
 Sta. 240+54.87
 S.N. 029-2514
 SCALE: NOT TO SCALE DRAWN BY DHS
 DATE 2/28/2008 CHECKED BY