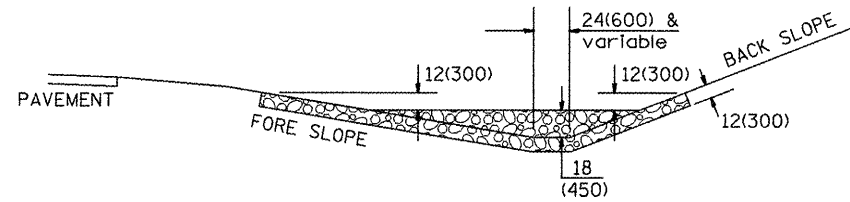


ROUTE		SECTION	COUNTY	TOTAL SHEETS	SHEET NO.
F.A.P.	665				
MKD.	IL 116				

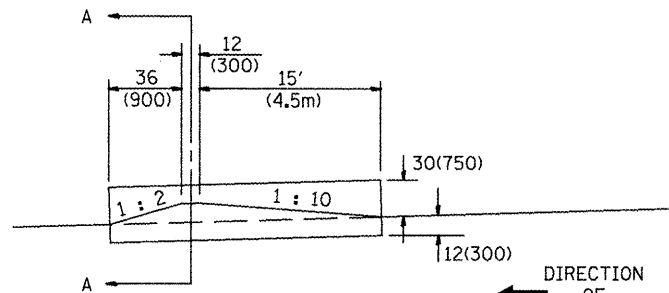
* 142 RS-6; 143[RS-4, (C-3)BR]; 142X(C-1)I



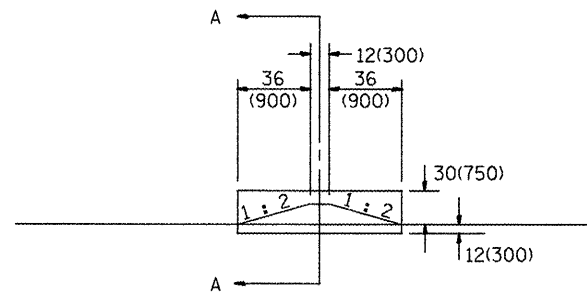
SECTION A - A

NOTES:

- FOR DITCH BOTTOM PROTECTED BY EXCELSIOR BLANKET, USE 400'(120m) SPACING.
FOR SEEDED DITCH BOTTOM, USE 200'(60m) SPACING.
- THIS WORK CONSISTS OF THE COMPLETE INSTALLTION OF EROSION CONTROL DITCH CHECK AT LOCATIONS AS SHOWN ON THE PLANS, OR AS DIRECTED BY THE ENGINEER. THE AGGREGATE GRADATION SHALL BE RR3 WITH A MINIMUM QUALITY OF CLASS B.

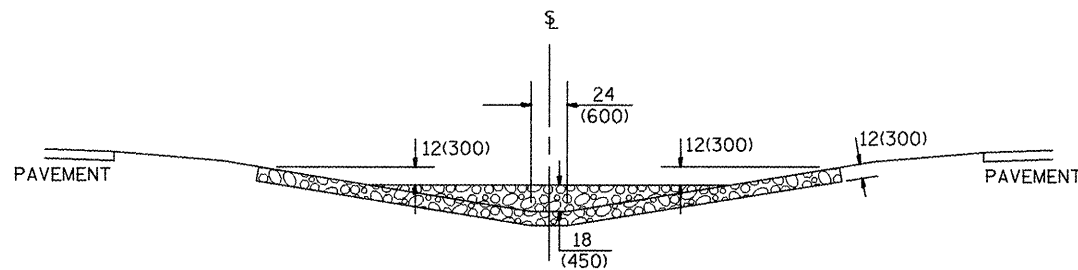


**SIDE VIEW
(WITHIN CLEAR ZONE)**

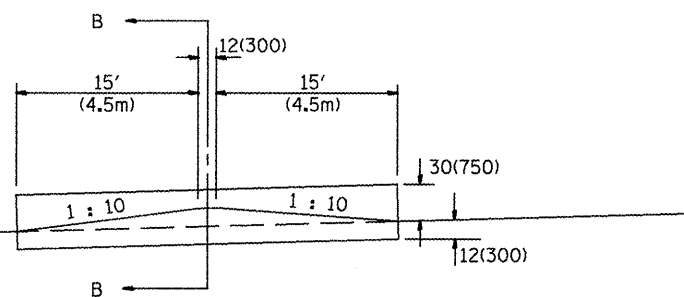


**SIDE VIEW
(OUTSIDE OF CLEAR ZONE)**

SIDE DITCH AGGREGATE DITCH CHECK



SECTION B - B



SIDE VIEW

MEDIAN AGGREGATE DITCH CHECK

STATION	MEDIAN	SIDE DITCH LEFT	SIDE DITCH RIGHT	NUMBER OF DITCH CHECKS	FORE SLOPE	DITCH BOTTOM WIDTH	BACK SLOPE	BERM SLOPE
IL 116 STA. 239+60 RT			RT	1	1:2.5	24	1:2.5	1:2

ESTIMATE QUANTITIES

	FORE SLOPE	DITCH BOTTOM	BACK SLOPE	BERM SLOPE	AGGREGATE DITCH CHECK EROSION CONTROL METRIC TON/TON
MEDIAN DITCH	1 : 6	24(600)	—	1 : 10	95(86)
SIDE DITCH	1 : 6	24(600)	1 : 4	1 : 10 & 1 : 2	50(45)
SIDE DITCH	1 : 6	24(600)	1 : 4	1 : 2 & 1 : 2	19(17)
SIDE DITCH	1 : 4	24(600)	1 : 3	1 : 10 & 1 : 2	18(16)
SIDE DITCH	1 : 4	24(600)	1 : 3	1 : 2 & 1 : 2	14(13)

All slope ratios are expressed as units of vertical displacement to units of horizontal displacement (V:H).
All dimensions are in inches (millimeters) unless otherwise noted.

QUANTITIES
CALC. BY: _____ DATE: _____
CHECKED BY: _____ DATE: _____

QUANTITY CALCULATIONS ARE ON FILE AT THE DISTRICT 4 OFFICE, BUREAU OF PROJECT IMPLEMENTATION, DOCUMENTATION SECTION

DATE	REVISIONS	BY
1-1-97	RENUM. A-12.04, NEW REVISION BOX, REVISED TITLE BOX, ADDED QUANTITY CALCULATION BOX	T.P.
9-15-05	REVISED DESIGNER NOTE	M.M.A.
10-16-06	REVISED RR3 QUALITY & TO 2007 SPEC.	M.A.

ILLINOIS DEPARTMENT OF TRANSPORTATION
SPECIAL DETAIL SHEET
EROSION CONTROL AGGREGATE DITCH CHECK
CADD DETAIL 280101-D4
SCALE: NOT DRAWN TO SCALE
DRAWN BY CADD
CHECKED BY _____