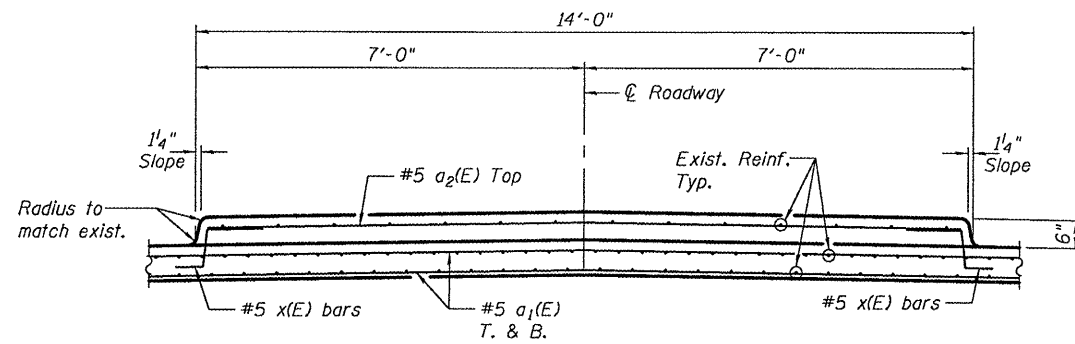
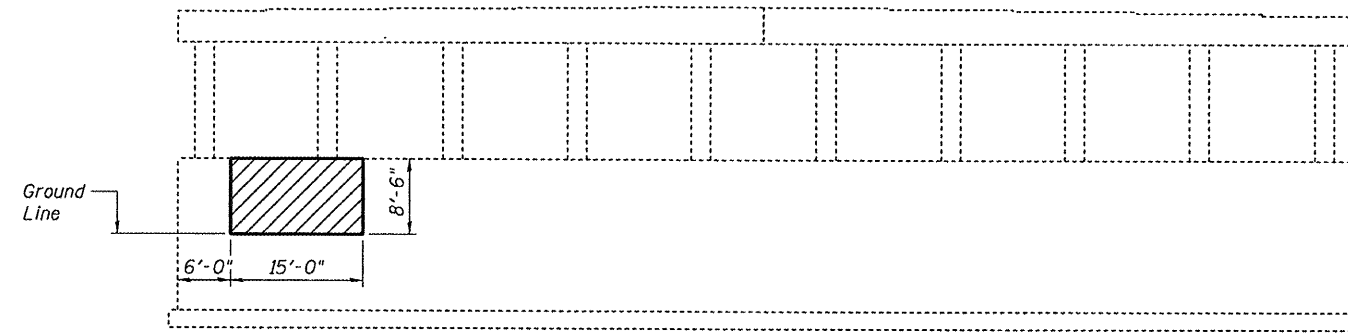


STATE OF ILLINOIS
DEPARTMENT OF TRANSPORTATION

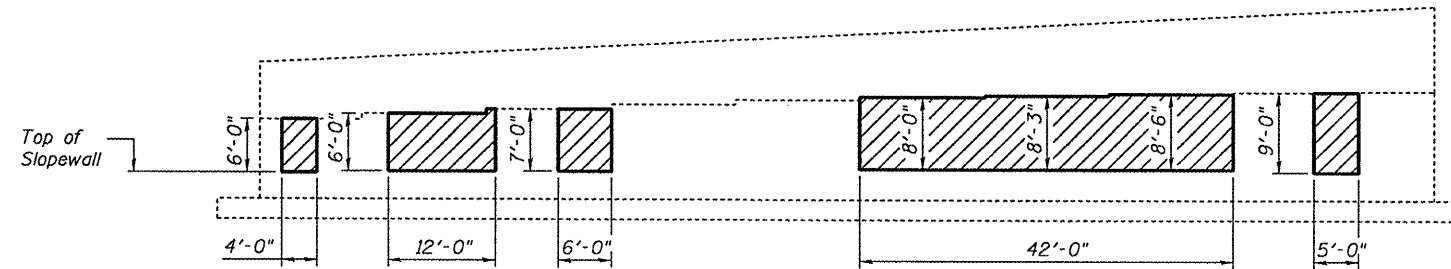
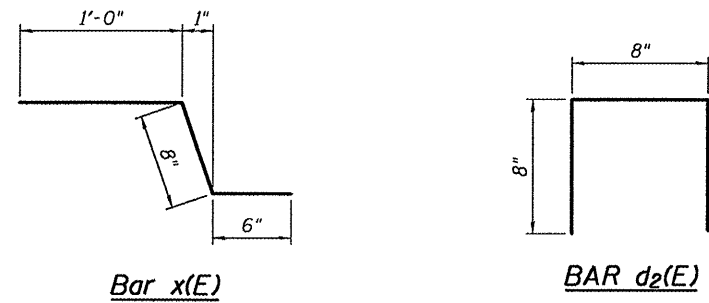


TYPICAL MEDIAN SECTION AT JOINT REMOVAL
(See recessed strip seal joint in raised median detail)

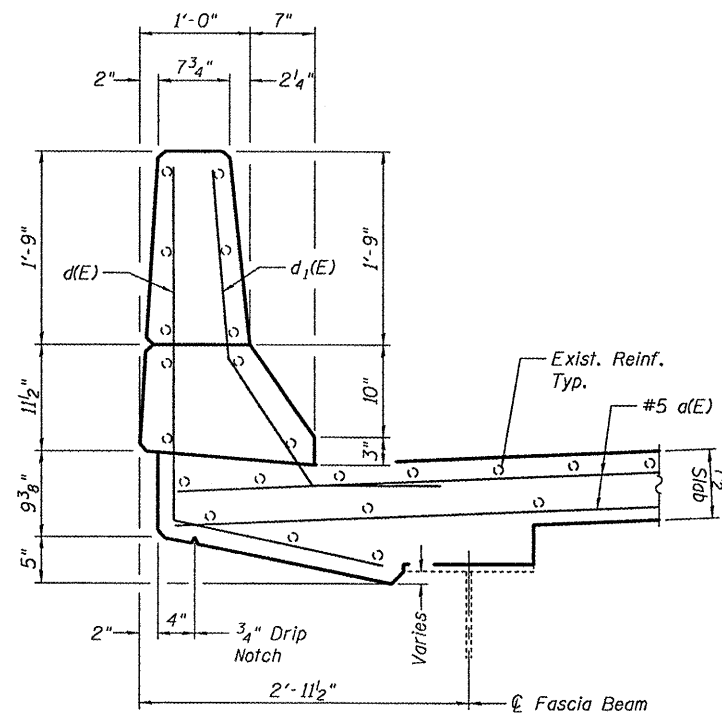
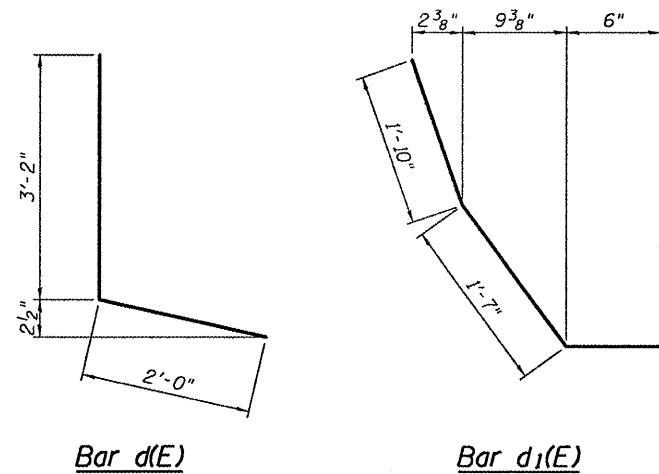


PIER 1 ELEVATION
(Looking South)

Note:
Hatched areas indicate areas of
Structural Repair of Concrete ≤ 5 ".



NORTH ABUTMENT ELEVATION
(Looking North)



TYPICAL PARAPET SECTION

BILL OF MATERIAL

Bar	No.	Size	Length	Shape
a(E)	42	#5	28'-0"	—
a1(E)	63	#5	23'-9"	—
a2(E)	9	#5	20'-6"	—
d(E)	16	#4	5'-2"	┌
d1(E)	16	#5	3'-11"	┌
d2(E)	136	#4	2'-0"	┐
x(E)	18	#5	2'-2"	└
Concrete Removal			Cu. Yd.	31.9
Concrete Superstructure			Cu. Yd.	32.3
Reinforcement Bars, Epoxy Coated			Pound	3,150

Bars indicated thus 1 x 2-#5 etc. indicates 1 line of bars with 2 lengths per line.

DETAILS
SN 057-0202

DESIGNED	G.G.E.
CHECKED	A.T.H.
DRAWN	Drew Christopher
CHECKED	G.G.E. A.T.H.

EXAMINED	March 9, 2009
PASSED	<i>Carl Perry</i> ENGINEER OF STRUCTURAL SERVICES
	<i>Ralph E. Anderson</i> ENGINEER OF BRIDGES AND STRUCTURES

SHEET NO. 4	F.A.P. RTE.	SECTION	COUNTY	TOTAL SHEETS	SHEET NO.
	676	(9-1)BJR	McLEAN	17	15
6 SHEETS	CONTRACT NO. 70731		FED. ROAD DIST. NO. ILLINOIS FED. AID PROJECT		