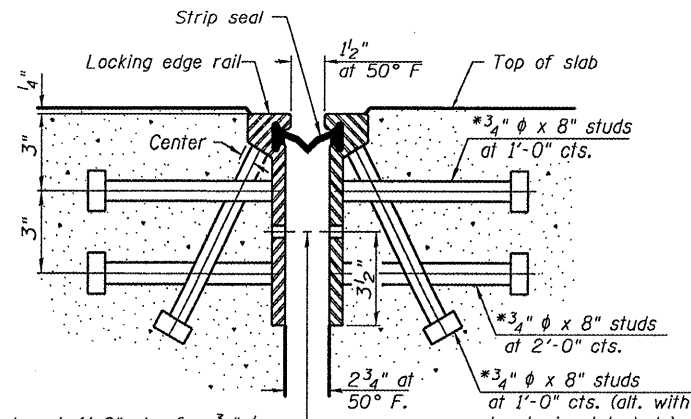


STATE OF ILLINOIS  
DEPARTMENT OF TRANSPORTATION

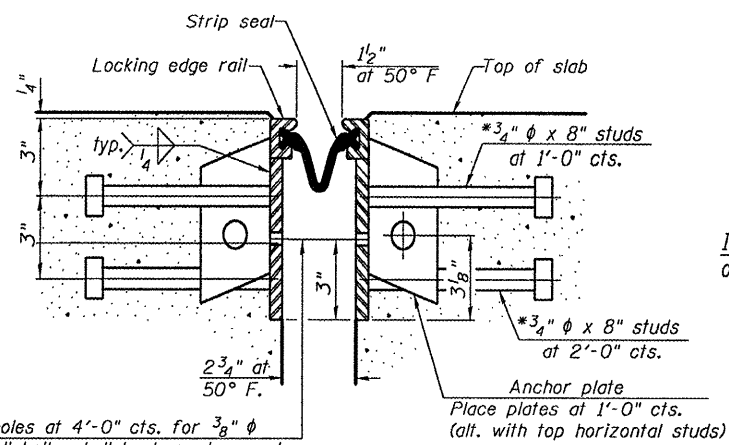
\*Granular or solid flux filled headed studs conforming to Article 1006.32 of the Std. Specs., automatically end welded.

Notes:  
Locking edge rails are to be placed 1/4" below the deck elevation through the median. Stop raised median 3" short of deck ends and 3" short of face of abutments.  
See median details for reinforcement required.



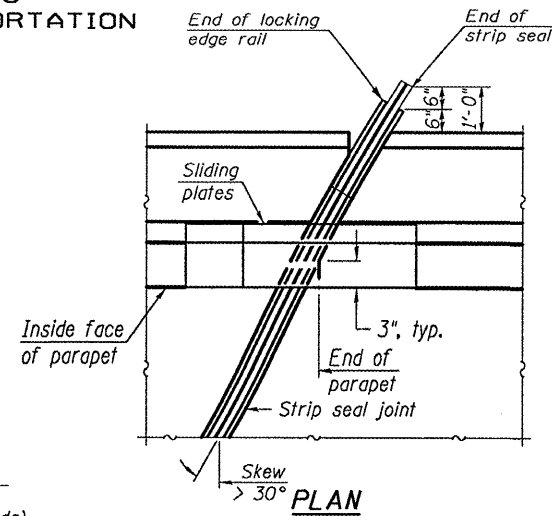
7/16"  $\phi$  holes at 4'-0" cts. for 3/8"  $\phi$  bolts. All bolts shall be burned, sawed, or chipped off flush with the plates after forms are removed, typ.

SECTION THRU ROLLED RAIL JOINT  
AT SOUTH ABUTMENT

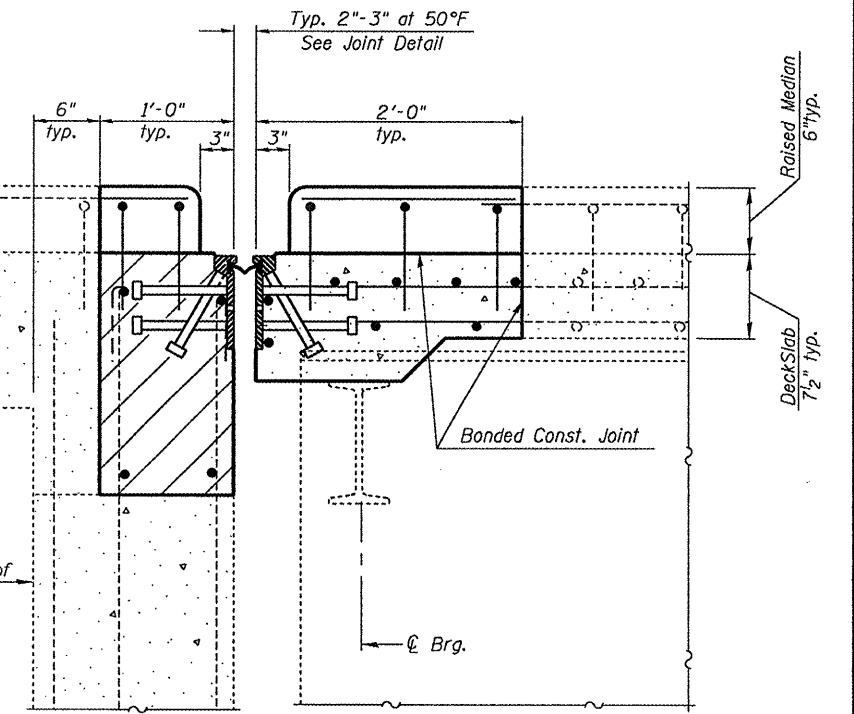


7/16"  $\phi$  holes at 4'-0" cts. for 3/8"  $\phi$  bolts. All bolts shall be burned, sawed, or chipped off flush with the plates after forms are removed, typ.

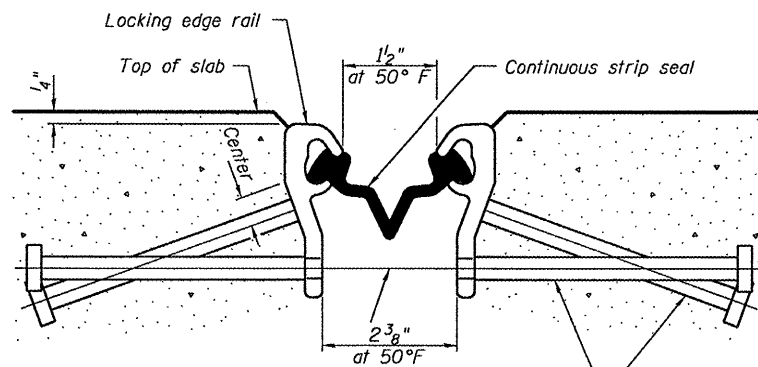
SECTION THRU WELDED RAIL JOINT  
AT SOUTH ABUTMENT



Notes:  
The strip seal shall be made continuous and shall have a minimum thickness of 1/4". The configuration of the strip seal shall match the configuration of the permitted. The gland shall be sized for a maximum rated movement of 4 inches. The height and thickness of the Locking Edge Rails shown are minimum dimensions. The actual configuration of the Locking Edge Rails and matching strip seal may vary from manufacturer to manufacturer. Flanged edge rails will not be allowed. Locking Edge Rails may be spliced at slope discontinuities and stage construction joints.  
The manufacturer's recommended installation methods shall be followed. The joint opening and deck dimensions detailed on the superstructure are based on a rolled rail expansion joint. If the Contractor elects to use the welded rail expansion joint, the opening and deck dimensions shall be modified according to the dimensions detailed on this sheet. Required modifications shall be made at no additional cost to the State.  
All steel components shall be galvanized after fabrication according to Article 520.03 of the Standard Specifications.  
Locking Edge Rails. Open or "webbed" strip seal gland configurations are not allowed. The inside of the Locking Edge Rail groove shall be free of weld residue.

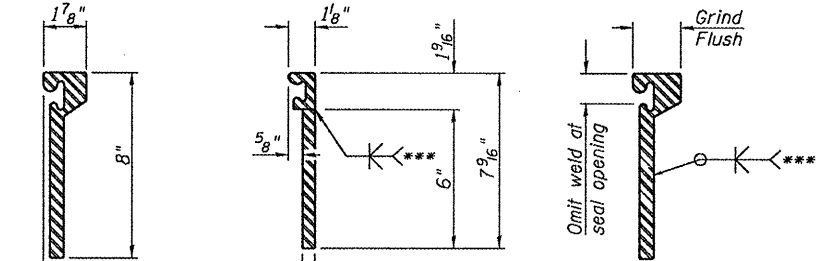


\* Omit weld at seal opening.



7/16"  $\phi$  holes at 4'-0" cts. for 3/8"  $\phi$  bolts. All bolts shall be burned, sawed, or chipped off flush with the plates after forms are removed, typ.

SECTION THRU STRIP SEAL JOINT  
AT NORTH ABUTMENT



WELDED RAIL

LOCKING EDGE RAIL SPLICE

The inside of the locking edge rail groove shall be free of weld residue.

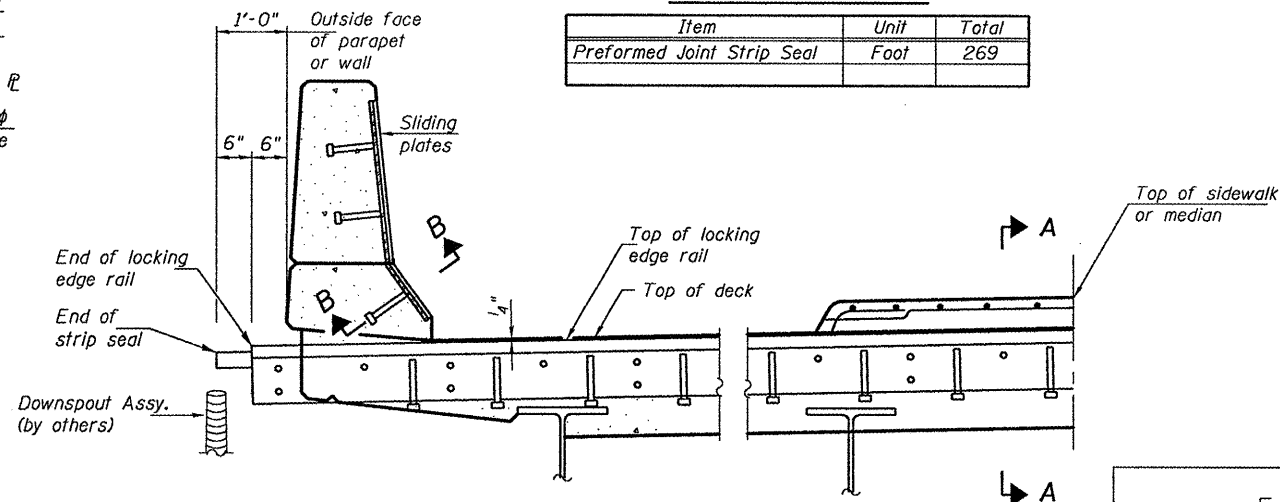
ROLLED EXTRUDED RAIL

Place 1/2"  $\phi$  x 6" granular or solid flux filled headed studs conforming to Article 1006.32 of the Std. Specs., automatically end welded at 1'-0" alt. cts.

LOCKING EDGE RAILS

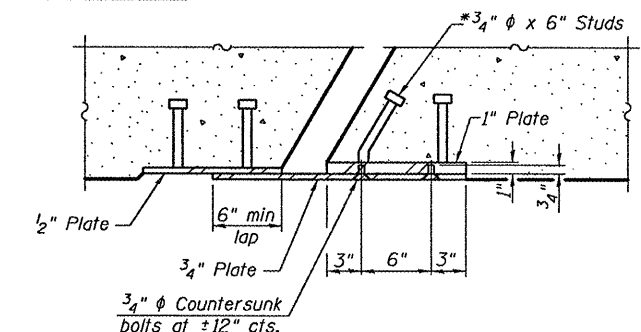
BILL OF MATERIAL

Item	Unit	Total
Preformed Joint Strip Seal	Foot	269



TYPICAL PARTIAL DECK CROSS SECTION

SECTION A-A



SECTION B-B

PREFORMED JOINT STRIP  
SEAL DETAILS  
SN 057-0202

LOCKING EDGE RAIL

LOCKING EDGE RAIL SPLICE

DESIGNED	G.G.E.
CHECKED	A.T.H.
DRAWN	Drew Christopher
CHECKED	G.G.E. A.T.H.

EXAMINED	March 9, 2009
PASSED	Ralph E. Anderson

SHEET NO. 5	F.A.P. RTE. 676	SECTION (9-1)BJR	COUNTY McLEAN	TOTAL SHEETS 17	SHEET NO. 16
6 SHEETS	FED. ROAD DIST. NO. ILLINOIS		FED. AID PROJECT CONTRACT NO. 70731		