

F.A.I. RTE.	SECTION	COUNTY	TOTAL SHEETS	SHEET NO.
39	D5 PATCHING 2009-2	MCLEAN	25	1
FED. ROAD DIST. NO.	ILLINOIS	CONTRACT NO. 70739		

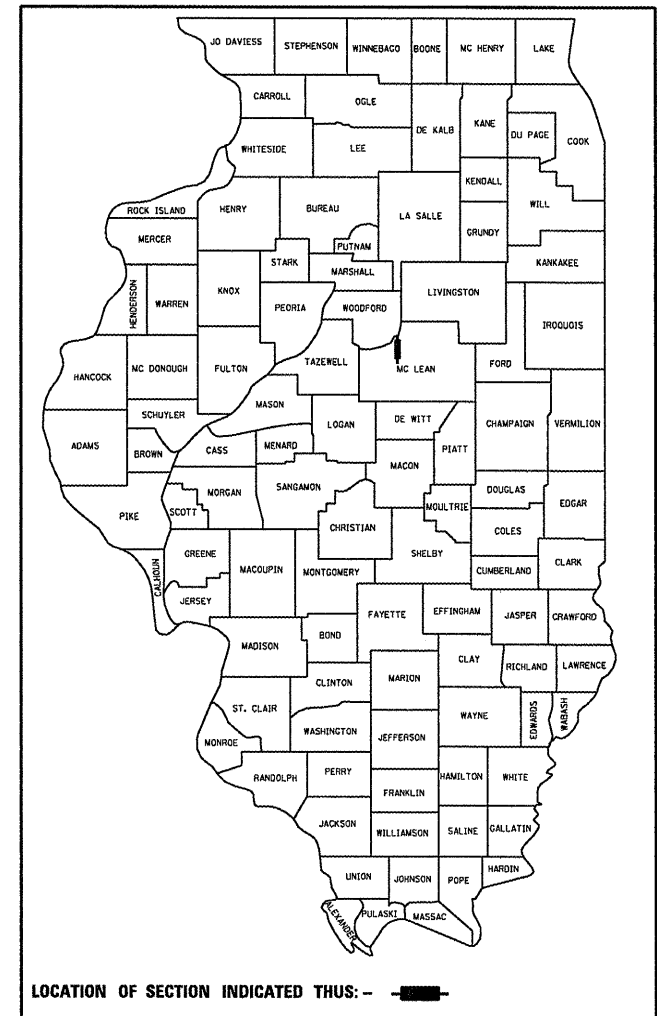
STATE OF ILLINOIS
DEPARTMENT OF TRANSPORTATION
DIVISION OF HIGHWAYS

PROPOSED
HIGHWAY PLANS

F.A.I. ROUTE 39 (I-39)
SECTION D5 PATCHING 2009-2
MCLEAN COUNTY
C-95-028-08

FOR INDEX OF SHEETS, SEE SHEET NO. 2
FOR SUMMARY OF QUANTITIES, SEE SHEET NO. 5

D-95-028-08



LOCATION OF SECTION INDICATED THUS: - [black box] -

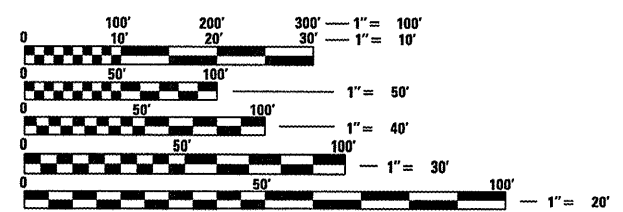
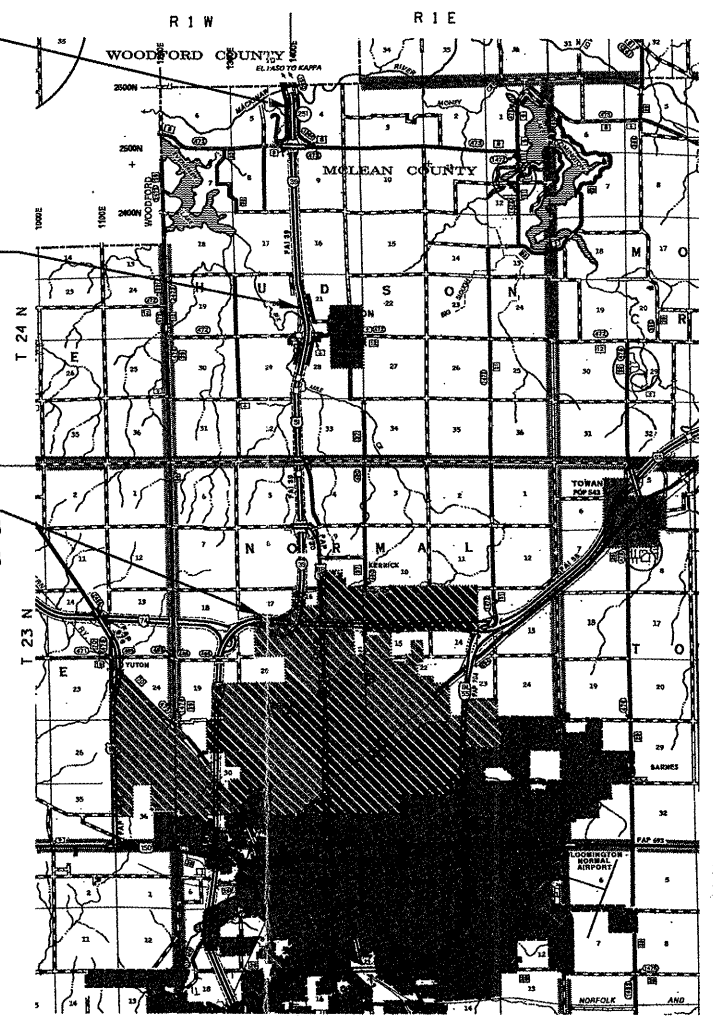
CURRENT ADT = 20,600 (2008)

DESIGN DESIGNATION
INTERSTATE
N/A

PROJECT ENDS
STATION 557+87.88

STATION EQUATION
STA 377+24.54 (BK) =
STA 377+00.00 (AH)

PROJECT BEGINS
STATION 41+92 I-39 NB
STATION 77+32 I-39 SB
STATION 30+00 RAMP A
STATION 10+00 RAMP B



FULL SIZE PLANS HAVE BEEN PREPARED USING STANDARD ENGINEERING SCALES. REDUCED SIZED PLANS WILL NOT CONFORM TO STANDARD SCALES. IN MAKING MEASUREMENTS ON REDUCED PLANS, THE ABOVE SCALES MAY BE USED.

J.U.L.I.E.
JOINT UTILITY LOCATION INFORMATION FOR EXCAVATION
1-800-892-0123
OR 811

PROJECT ENGINEER - NANCY FASIG
PROJECT MANAGER - TODD BLACK
PHONE: (217)465-4181

CONTRACT NO. 70739

SCALE
0 500 1000 1500 2000 2500 FEET

TOTAL LENGTH OF SECTION & PROJECT = 51,633.12 FEET = 9.779 MILES
NET LENGTH OF SECTION & PROJECT = 51,633.12 FEET = 9.779 MILES

STATE OF ILLINOIS
DEPARTMENT OF TRANSPORTATION
DIVISION OF HIGHWAYS

SUBMITTED 3/19 20 09

Joseph E. Gower
DEPUTY DIRECTOR OF HIGHWAYS, REGION ENGINEER

March 27, 20 09
Charles J. Ingersoll
ENGINEER OF DESIGN AND ENVIRONMENT

March 27, 20 09
Christine M. Reed
DIRECTOR OF HIGHWAYS, CHIEF ENGINEER

**PRINTED BY THE AUTHORITY
OF THE STATE OF ILLINOIS**