

F.A.I. RTE.	SECTION	COUNTY	TOTAL SHEETS	SHEET NO.
39	D5 PATCHING 2009-2	MCLEAN	25	1
FED. ROAD DIST. NO.	ILLINOIS	CONTRACT NO. 70739		

STATE OF ILLINOIS
DEPARTMENT OF TRANSPORTATION
DIVISION OF HIGHWAYS

PROPOSED
HIGHWAY PLANS

F.A.I. ROUTE 39 (I-39)
SECTION D5 PATCHING 2009-2
MCLEAN COUNTY
C-95-028-08

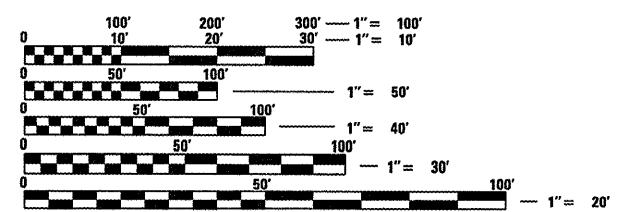
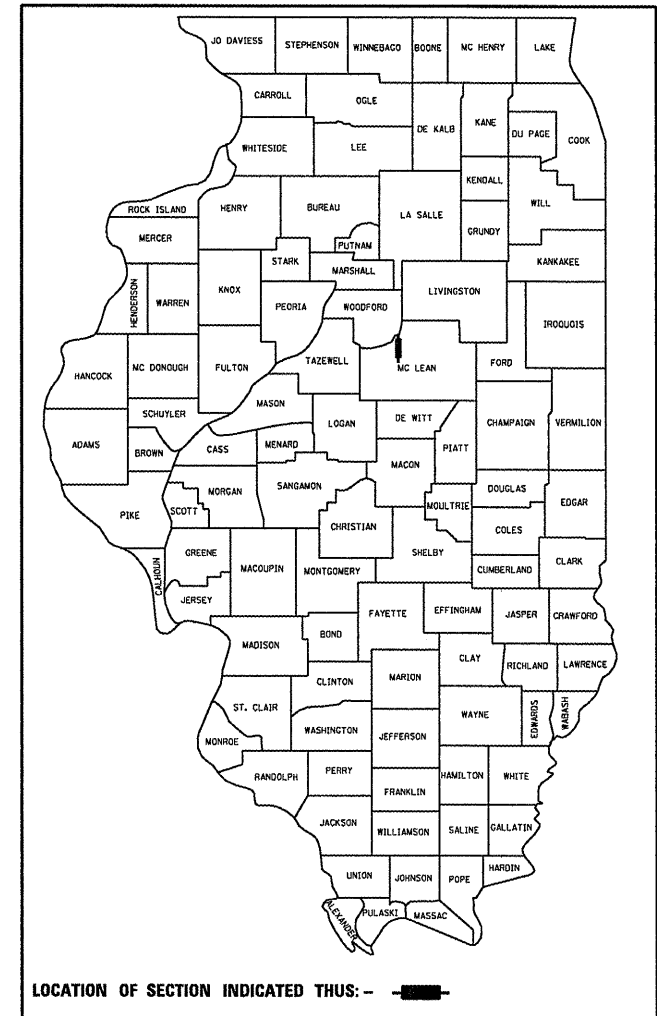
PATCHING FROM I-55 TO WOODFORD COUNTY LINE

FOR INDEX OF SHEETS, SEE SHEET NO. 2
FOR SUMMARY OF QUANTITIES, SEE SHEET NO. 5

CURRENT ADT = 20,600 (2008)

DESIGN DESIGNATION
INTERSTATE
N/A

D-95-028-08



FULL SIZE PLANS HAVE BEEN PREPARED USING STANDARD ENGINEERING SCALES. REDUCED SIZED PLANS WILL NOT CONFORM TO STANDARD SCALES. IN MAKING MEASUREMENTS ON REDUCED PLANS, THE ABOVE SCALES MAY BE USED.

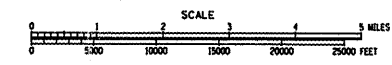
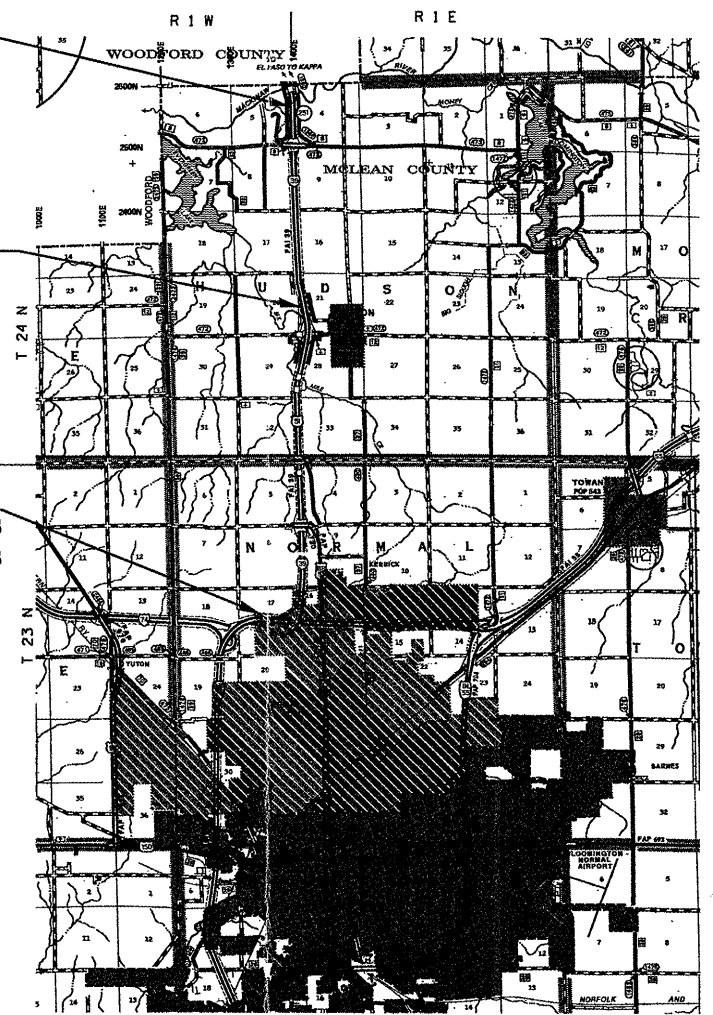
J.U.L.I.E.
JOINT UTILITY LOCATION INFORMATION FOR EXCAVATION
1-800-892-0123
OR 811

PROJECT ENGINEER - NANCY FASIG
PROJECT MANAGER - TODD BLACK
PHONE: (217)465-4181
CONTRACT NO. 70739

PROJECT ENDS
STATION 557+87.88

STATION EQUATION
STA 377+24.54 (BK) =
STA 377+00.00 (AH)

PROJECT BEGINS
STATION 41+92 I-39 NB
STATION 77+32 I-39 SB
STATION 30+00 RAMP A
STATION 10+00 RAMP B



TOTAL LENGTH OF SECTION & PROJECT = 51,633.12 FEET = 9.779 MILES
NET LENGTH OF SECTION & PROJECT = 51,633.12 FEET = 9.779 MILES

STATE OF ILLINOIS
DEPARTMENT OF TRANSPORTATION
DIVISION OF HIGHWAYS

SUBMITTED 3/19 20 09

Joseph E. Gower
DEPUTY DIRECTOR OF HIGHWAYS, REGION ENGINEER

March 27, 2009
Charles J. Ingersoll
ENGINEER OF DESIGN AND ENVIRONMENT

March 27, 2009
Christine M. Reed
DIRECTOR OF HIGHWAYS, CHIEF ENGINEER

PRINTED BY THE AUTHORITY
OF THE STATE OF ILLINOIS

INDEX OF SHEETS

SHEET NO.	DESCRIPTION
1	COVER SHEET
2	INDEX OF SHEETS
2	LIST OF STANDARDS
3	LOCATION MAP
4	GENERAL NOTES
5	SUMMARY OF QUANTITIES
6-11	EXISTING TYPICAL SECTIONS
12-18	SCHEDULES OF QUANTITIES
19-20	DETAILS OF I-39 / I-55 INTERCHANGE STATIONING
21	DETAIL OF TRAFFIC CONTROL FOR RAMPS, PARTIAL RAMP CLOSURE, DISTRICT 5 DETAIL NO. 70103710
22	DETAILS OF EXISTING JOINTED P.C.C. PAVEMENT (HINGE-JOINT) AND ADJACENT P.C.C. SHOULDER
23-25	DETAILS OF PAVEMENT MARKING (MCLEAN COUNTY "SPOT" IMPROVEMENTS ONLY)

HIGHWAY STANDARDS

STANDARD NUMBER	NAME OF STANDARD
000001-05	STANDARD SYMBOLS, ABBREVIATIONS AND PATTERNS
001001-02	AREAS OF REINFORCEMENT BARS
001006	DECIMAL OF AN INCH AND OF A FOOT
420001-07	PAVEMENT JOINTS
420101-04	24' (7.2m) JOINTED PCC PAVEMENT
420106-04	36' (10.8m) JOINTED PCC PAVEMENT
420701-02	PAVEMENT FABRIC
421001-02	BAR REINFORCEMENT FOR CRC PAVEMENT
421101-07	24' (7.2m) CRC PAVEMENT (WITH WIDE FLANGE BEAM TERMINAL JOINT)
442001-04	CLASS A PATCHES
442101-07	CLASS B PATCHES
701101-02	OFF-ROAD OPERATIONS, MULTILANE, 15' TO 24" FROM PAVEMENT EDGE
701400-03	APPROACH TO LANE CLOSURE, FREEWAY/EXPRESSWAY
701401-05	LANE CLOSURE, FREEWAY/EXPRESSWAY
701411-05	LANE CLOSURE, MULTILANE, AT ENTRANCE OR EXIT RAMP, FOR SPEEDS ≥ 45 MPH
701426-03	LANE CLOSURE, MULTILANE, INTERMITTENT OR MOVING OPERATION, FOR SPEEDS ≥ 45 MPH
701446-01	TWO LANE CLOSURE, FREEWAY/EXPRESSWAY
701901-01	TRAFFIC CONTROL DEVICES
780001-02	TYPICAL PAVEMENT MARKINGS

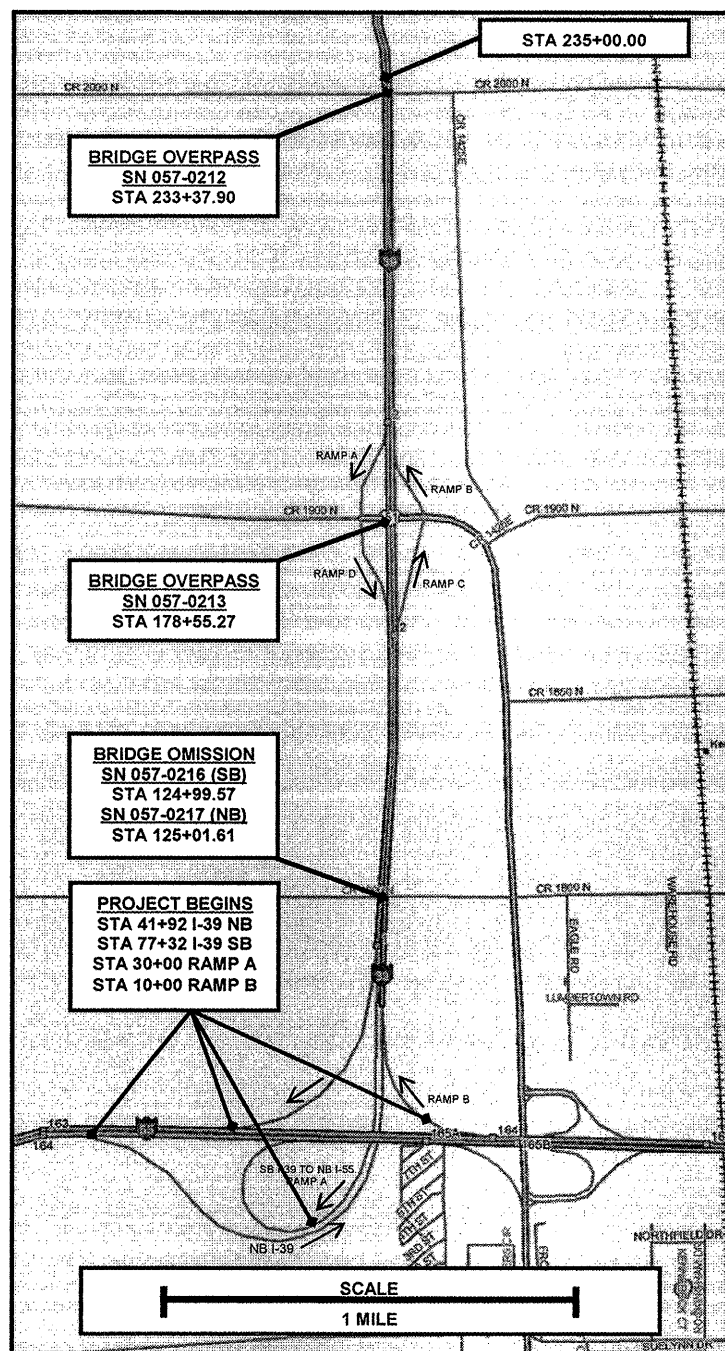
FILE NAME : c:\pwork\pwork\WIDOT\BLACKRT\dms04829\057	USER NAME : black-t	DESIGNED : -	REVISED : -
		DRAWN : JJB	REVISED : -
		CHECKED : -	REVISED : -
		DATE : -	REVISED : -

**STATE OF ILLINOIS
DEPARTMENT OF TRANSPORTATION**

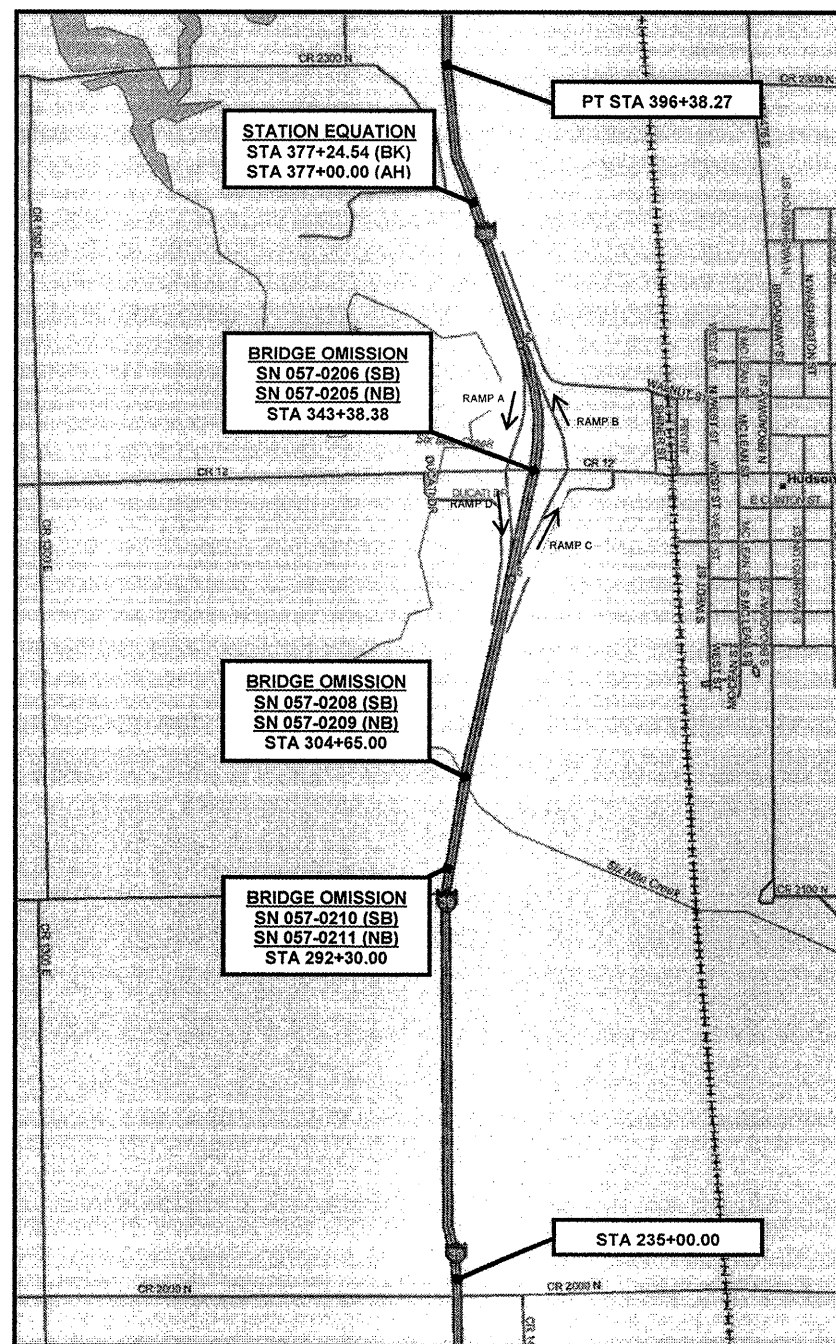
SCALE: NA		SHEET NO.	OF	SHEETS	STA.	TO STA.	F.A.I. RTE.	SECTION	COUNTY	TOTAL SHEETS	SHEET NO.
							39	05 PATCHING 2009-2	MCLEAN	25	2
										CONTRACT NO. 70739	
										ILLINOIS FED. AID PROJECT	

LOCATION MAP

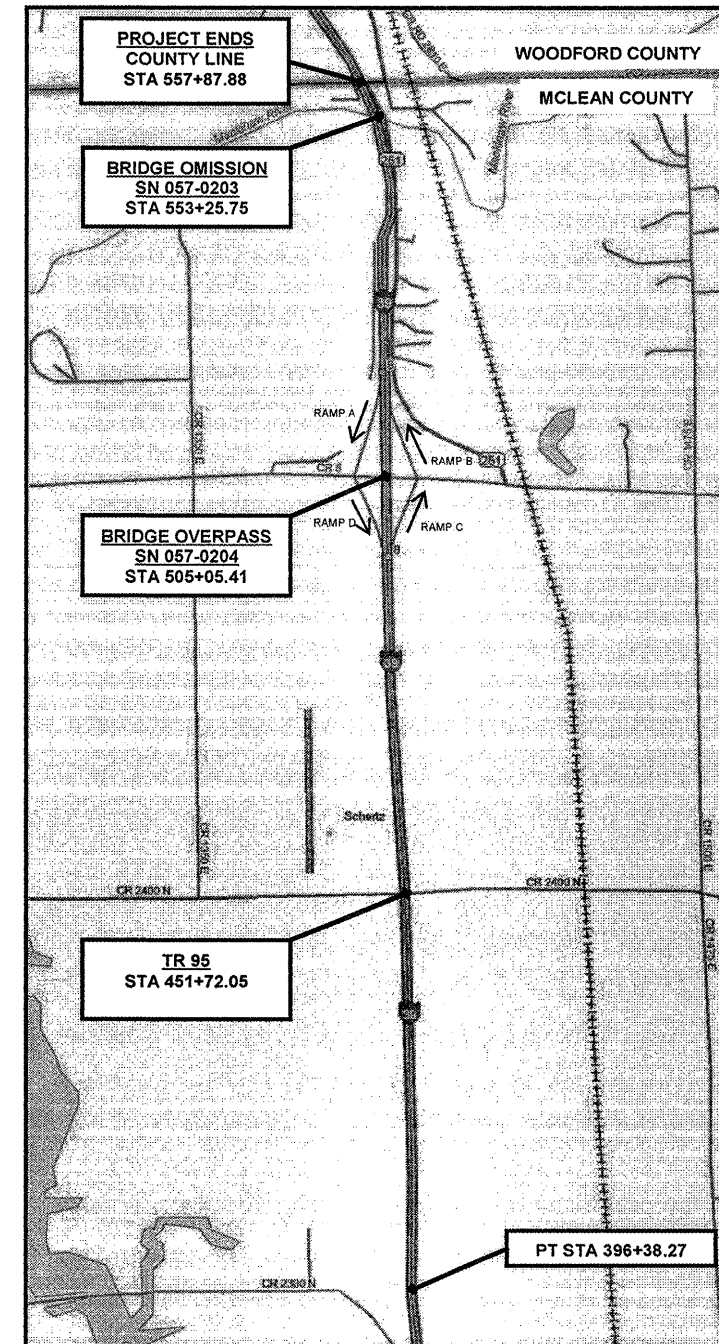
SOUTH SECTION
STA. 41+92.00 TO STA. 235+00.00



CENTRAL SECTION
STA. 235+00.00 TO STA. 377+24.54



NORTH SECTION
STA. 377+00.00 TO STA. 557+87.88



FILE NAME	USER NAME	DESIGNED	REVISED
7739-SHT COVER.dgn	blackst		
PLT SCALE = 48,000:1	CHECKED		
PLT DATE = 3/23/2009	DATE		
	DRAWN	JJB	

STATE OF ILLINOIS
DEPARTMENT OF TRANSPORTATION

LOCATION MAP

SCALE: SHEET NO. OF SHEETS STA. TO STA.

F.A.I. RTE.	SECTION	COUNTY	TOTAL SHEETS	SHEET NO.
39	D5 PATCHING 2009-2	MCLEAN	25	3
FED. ROAD DIST. NO. ILLINOIS FED. AID PROJECT			CONTRACT NO. 70739	

GENERAL NOTES

G. N. -100
 ENGLISH UNITS OF MEASUREMENT SHALL GOVERN OVER AND
 SUPERSEDE ANY METRIC UNITS SHOWN IN THIS CONTRACT.
 WHERE INCLUDED, METRIC UNITS ARE FOR INFORMATION ONLY.

G. N. - 442 SPECIAL
 CLASS B PATCH - EXPANSION JOINT LOCATIONS WILL BE DETERMINED
 BY THE ENGINEER DURING CONSTRUCTION.

G. N. -442B SPECIAL -- PATCHING SCHEDULES
 THE PATCHING SCHEDULES INCLUDED IN THE PLANS REPRESENT
 THE BEST INFORMATION AVAILABLE AT THE TIME OF COMPLETION
 OF THE PLANS FOR LETTING. VARIATIONS IN LOCATION AND SIZES
 OF FULL-DEPTH PATCHES MAY OCCUR.

G. N. -667
 THE RESIDENT ENGINEER SHALL CONTACT THE PROGRAM DEVELOPMENT
 CHIEF OF SURVEYS PRIOR TO THE PRE-CONSTRUCTION CONFERENCE FOR
 INSTRUCTION AS TO SETTING OF TEMPORARY OR PERMANENT TIES FOR
 CENTERLINE ALIGNMENT CONTROL SURVEY MARKERS (PC'S, PT'S, AND PI'S).
 PROJECT IMPLEMENTATION PERSONNEL WILL BE RESPONSIBLE FOR SETTING
 THESE MARKERS.

G. N. -780 SPECIAL
 EPOXY PAVEMENT MARKINGS SHALL BE APPLIED UPON COMPLETION OF
 THE PATCH WORK. EPOXY PAVEMENT MARKINGS SHALL COINCIDE WITH
 THE EXISTING PAVEMENT MARKINGS. EPOXY PAVEMENT MARKINGS SHALL
 BE LIMITED TO THE PATCH LENGTH AT EACH PATCH LOCATION. EPOXY
 PAVEMENT MARKINGS SHALL NOT BE APPLIED CONTINUOUSLY THROUGH
 THE PROJECT BETWEEN PATCH LOCATIONS.

G. N. -1004.01
 COARSE AGGREGATE GRADATION CA-10 MAY BE USED WHENEVER COARSE
 AGGREGATE CA-6 IS SPECIFIED IN THE STANDARD SPECIFICATIONS.

NO COMMITMENTS

FILE NAME e:\gwork\p\1101\BLACKRT\dms84829\057	USER NAME blackrt	DESIGNED -	REVISED -	STATE OF ILLINOIS DEPARTMENT OF TRANSPORTATION	GENERAL NOTES	F.A.I. RTE. 39	SECTION D5 PATCHING 2009-2	COUNTY MCLEAN	TOTAL SHEETS 25	SHEET NO. 4	CONTRACT NO. 70739
PLOT SCALE 40.2362' / IN.	PLOT DATE 3/23/2009	DRAWN JJB	CHECKED -	REVISED -	REVISED -	SCALE: NA	SHEET NO. OF SHEETS	STA. TO STA.	ILLINOIS FED. AID PROJECT		

SUMMARY OF QUANTITIES

LOCATION OF WORK:

FAI - 39
Mclean County
Sta. 41+92.00 to 198+61.67
Urban - Multilane
100% State
J000-2A

FAI - 39
Mclean County
Sta. 198+61.67 to 557+87.88
Rural - Multilane
100% State
J000-2A

CODE NO	ITEM	UNIT	TOTAL QUANTITY		
42001200	PAVEMENT FABRIC	SQ YD	366.0	366.0	0.0
44200549	CLASS A PATCHES, TYPE I, 10 INCH	SQ YD	72.0	0.0	72.0
44200553	CLASS A PATCHES, TYPE II, 10 INCH	SQ YD	228.0	0.0	228.0
44200557	CLASS A PATCHES, TYPE III, 10 INCH	SQ YD	82.0	0.0	82.0
44200559	CLASS A PATCHES, TYPE IV, 10 INCH	SQ YD	242.0	0.0	242.0
44200982	CLASS B PATCHES, TYPE II, 11 INCH	SQ YD	484.0	384.0	100.0
44200986	CLASS B PATCHES, TYPE III, 11 INCH	SQ YD	98.0	98.0	0.0
44200988	CLASS B PATCHES, TYPE IV, 11 INCH	SQ YD	267.0	267.0	0.0
44201294	CLASS B PATCH-EXPANSION JOINT	FOOT	420.0	364.0	56.0
44201296	DEFORMED BARS - EXPANSION JOINT	EACH	210.0	182.0	28.0
44213000	PATCHING REINFORCEMENT	SQ YD	622.0	0.0	622.0
44213200	SAW CUTS	FOOT	8167.0	3612.0	4555.0
67100100	MOBILIZATION	L SUM	1.0	0.3	0.7
70100420	TRAFFIC CONTROL AND PROTECTION, STANDARD 701411	EACH	15.0	7.0	8.0
70100800	TRAFFIC CONTROL AND PROTECTION, STANDARD 701401	L SUM	1.0	0.3	0.7
70100815	TRAFFIC CONTROL AND PROTECTION, STANDARD 701446	L SUM	1.0	1.0	0.0
70103815	TRAFFIC CONTROL SURVEILLANCE	CAL DA	15.0	7.0	8.0
* 78005110	EPOXY PAVEMENT MARKING - LINE 4"	FOOT	1620.0	675.0	945.0
* 78005140	EPOXY PAVEMENT MARKING - LINE 8"	FOOT	335.0	235.0	100.0
X0323583	SPEED INDICATOR SIGN	CAL DA	40.0	20.0	20.0
X7015005	CHANGEABLE MESSAGE SIGN	CAL DA	56.0	42.0	14.0
Z0017100	DOWEL BARS	EACH	1476.0	1236.0	240.0
Z0075300	TIE BARS	EACH	560.0	200.0	360.0

* SPECIALTY ITEMS

FILE NAME :	USER NAME : blockr-t	DESIGNED :	REVISED :	STATE OF ILLINOIS DEPARTMENT OF TRANSPORTATION	SUMMARY OF QUANTITIES	F.A.I. RTE.	SECTION	COUNTY	TOTAL SHEETS	SHEET NO.
03\work\PM\1001\BLKCR1\dms84829\DS7	739-SHT-SCHEDULE.dgn	DRAWN JJB	REVISED -			39	D5 PATCHING 2009-2	MCLEAN	25	5
	PLOT SCALE : 48.0/39' / IN.	CHECKED	REVISED -							
	PLOT DATE : 3/23/2009	DATE	REVISED -							
					SCALE: NA	SHEET NO.	OF	SHEETS	STA.	TO STA.
						FED. ROAD DIST. NO.		ILLINOIS FED. AID PROJECT		

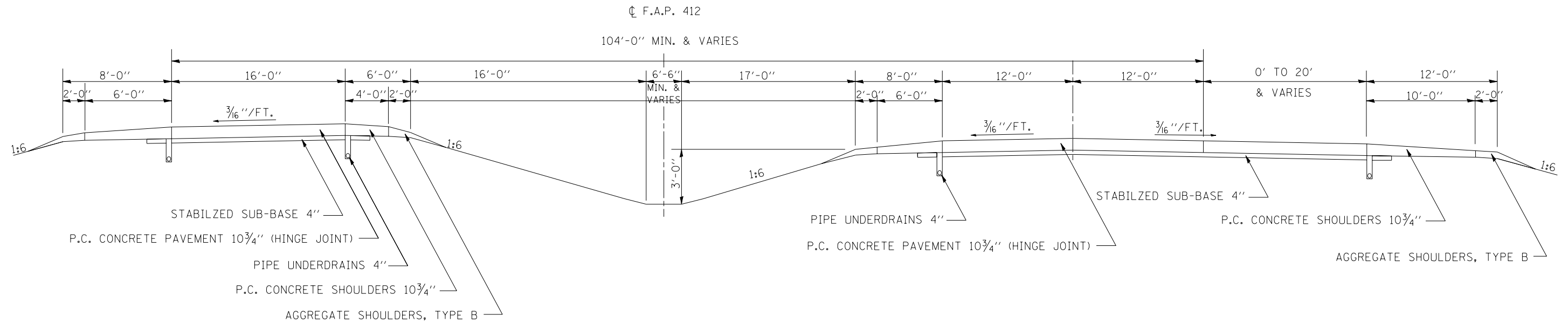
EXISTING TYPICAL SECTION F.A.P. 412 (I-39)

I-39 A-55 INTERCHANGE

TYPICAL I-39 RAMPS AND I-39 MAINLINE WITH AUXILIARY LANE

STA. 41+92.00 I-39 NB TO STA. 110+00.00 I-39 NB

STA. 77+32.00 I-39 SB TO STA. 110+00.00 I-39 SB



FILE NAME =	USER NAME = blackrt	DESIGNED -	REVISED -
et:\pwork\pwork\BLACKRT\dms84829\0570739-SHT-TYPICAL.dgn		DRAWN <i>JJB</i>	REVISED -
	PLOT SCALE = 40.0045' / IN.	CHECKED -	REVISED -
	PLOT DATE = 3/23/2009	DATE -	REVISED -

STATE OF ILLINOIS
DEPARTMENT OF TRANSPORTATION

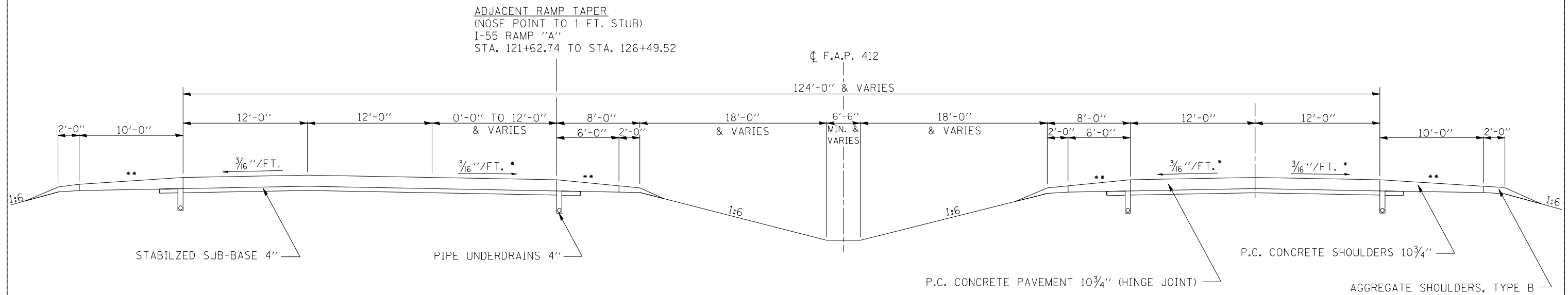
EXISTING TYPICAL SECTION

SCALE: SHEET NO. OF SHEETS STA. TO STA.

F.A. RTE.	SECTION	COUNTY	TOTAL SHEETS	SHEET NO.
39	D5 PATCHING 2009-2	MCLEAN	25	6
CONTRACT NO. 70739				
ILLINOIS FED. AID PROJECT				

EXISTING TYPICAL SECTION F.A.P. 412 (I-39)

STA. 110+00.00 TO STA. 144+50.00



- * SLOPE VARIES FOR SUPERELEVATION IN CURVES
- ** SLOPE VARIES IN SUPERELEVATION WITH MAXIMUM OF 0.08 FT/FT DIFFERENCE

FILE NAME =	USER NAME = blackrt	DESIGNED -	REVISED -
et:\pw\work\PWIDOT\BLACKRT\dms84829\0570739-SHT-TYPICAL.dgn		DRAWN JJB	REVISED -
	PLOT SCALE = 40.0226' / IN.	CHECKED -	REVISED -
	PLOT DATE = 3/23/2009	DATE -	REVISED -

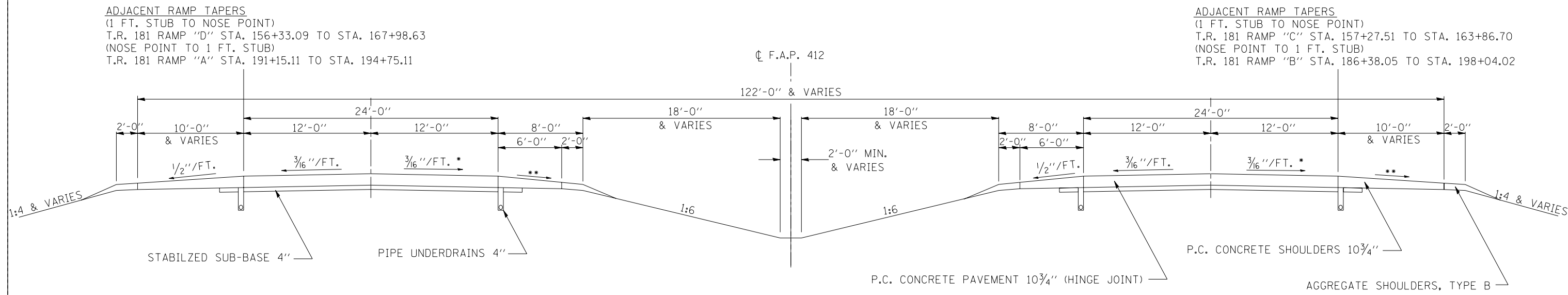
STATE OF ILLINOIS
DEPARTMENT OF TRANSPORTATION

EXISTING TYPICAL SECTION			
SCALE:	SHEET NO.	OF SHEETS	STA. TO STA.

F.A.I. RTE.	SECTION	COUNTY	TOTAL SHEETS	SHEET NO.
39	D5 PATCHING 2009-2	MCLEAN	25	7
FED. ROAD DIST. NO.			ILLINOIS FED. AID PROJECT	
			CONTRACT NO. 70739	

EXISTING TYPICAL SECTION F.A.P. 412 (I-39)

STA. 144 + 50.00 TO STA. 235 + 00.00



ADJACENT RAMP TAPERS
 (1 FT. STUB TO NOSE POINT)
 T.R. 181 RAMP "D" STA. 156+33.09 TO STA. 167+98.63
 (NOSE POINT TO 1 FT. STUB)
 T.R. 181 RAMP "A" STA. 191+15.11 TO STA. 194+75.11

ADJACENT RAMP TAPERS
 (1 FT. STUB TO NOSE POINT)
 T.R. 181 RAMP "C" STA. 157+27.51 TO STA. 163+86.70
 (NOSE POINT TO 1 FT. STUB)
 T.R. 181 RAMP "B" STA. 186+38.05 TO STA. 198+04.02

- * SLOPE VARIES FOR SUPERELEVATION IN CURVES
- ** SLOPE VARIES IN SUPERELEVATION WITH MAXIMUM OF 0.08 FT/FT DIFFERENCE

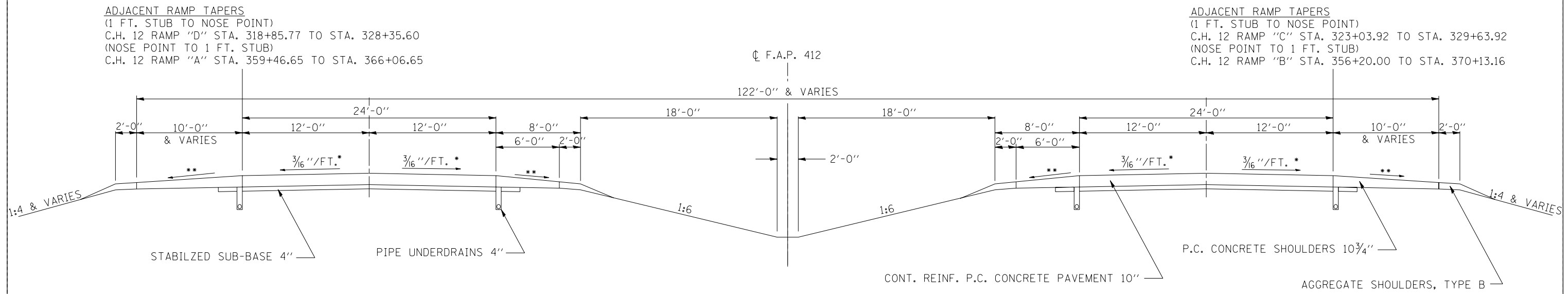
FILE NAME =	USER NAME = blackrt	DESIGNED -	REVISED -	STATE OF ILLINOIS DEPARTMENT OF TRANSPORTATION	EXISTING TYPICAL SECTION	F.A.I. RTE.	SECTION	COUNTY	TOTAL SHEETS	SHEET NO.
ci:\pwork\pwork\PIWIDOT\BLACKRT\dms84829\0570739-SHT-TYPICAL.dgn		DRAWN JJB	REVISED -			39	D5 PATCHING 2009-2	MCLEAN	25	8
PLOT SCALE = 40.0045' / IN.		CHECKED -	REVISED -			CONTRACT NO. 70739				
PLOT DATE = 3/23/2009		DATE -	REVISED -			FED. ROAD DIST. NO. ILLINOIS FED. AID PROJECT				

EXISTING TYPICAL SECTION F.A.P. 412 (I-39)

STA. 235+00.00 TO STA. 377+24.54

STATION EQUATION

STA. 377+24.54 (BK.) =
STA. 377+00.00 (AH.)



ADJACENT RAMP TAPERS
(1 FT. STUB TO NOSE POINT)
C.H. 12 RAMP "D" STA. 318+85.77 TO STA. 328+35.60
(NOSE POINT TO 1 FT. STUB)
C.H. 12 RAMP "A" STA. 359+46.65 TO STA. 366+06.65

ADJACENT RAMP TAPERS
(1 FT. STUB TO NOSE POINT)
C.H. 12 RAMP "C" STA. 323+03.92 TO STA. 329+63.92
(NOSE POINT TO 1 FT. STUB)
C.H. 12 RAMP "B" STA. 356+20.00 TO STA. 370+13.16

- * SLOPE VARIES FOR SUPERELEVATION IN CURVES
- ** SLOPE VARIES IN SUPERELEVATION WITH MAXIMUM OF 0.08 FT/FT DIFFERENCE

FILE NAME =	USER NAME = blackrt	DESIGNED -	REVISED -	STATE OF ILLINOIS DEPARTMENT OF TRANSPORTATION	EXISTING TYPICAL SECTION				F.A.I. RTE.	SECTION	COUNTY	TOTAL SHEETS	SHEET NO.
et:\pw\work\PWIDOT\BLACKRT\dms84829\0570739-SHT-TYPICAL.dgn	DRAWN JJB	CHECKED -	REVISED -						39	D5 PATCHING 2009-2	MCLEAN	25	9
	PLOT SCALE = 40.0054' / IN.	DATE -	REVISED -		SCALE: SHEET NO. OF SHEETS STA. TO STA.				CONTRACT NO. 70739				
	PLOT DATE = 3/23/2009	DATE -	REVISED -		FED. ROAD DIST. NO. ILLINOIS FED. AID PROJECT								

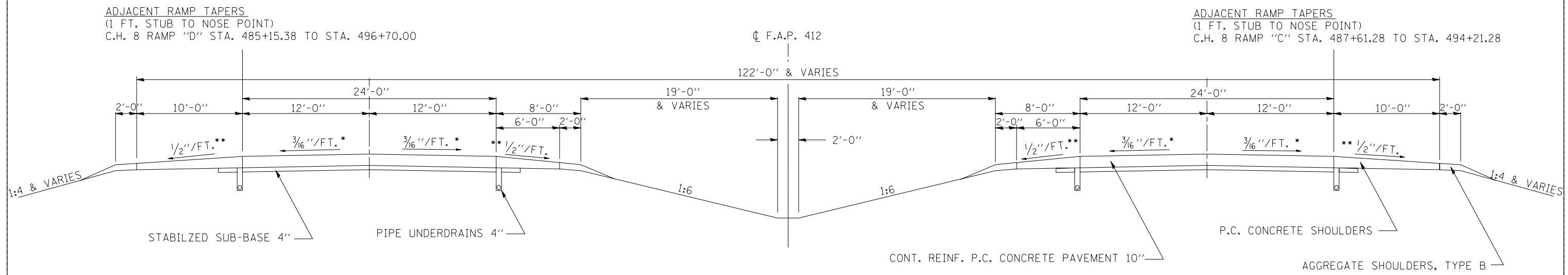
EXISTING TYPICAL SECTION F.A.P. 412 (I-39)

STA. 377+00.00 TO STA. 511+11.00

STATION EQUATION

STA. 377+24.54 (BK.) =

STA. 377+00.00 (AH.)



ADJACENT RAMP TAPERS
(1 FT. STUB TO NOSE POINT)
C.H. 8 RAMP "D" STA. 485+15.38 TO STA. 496+70.00

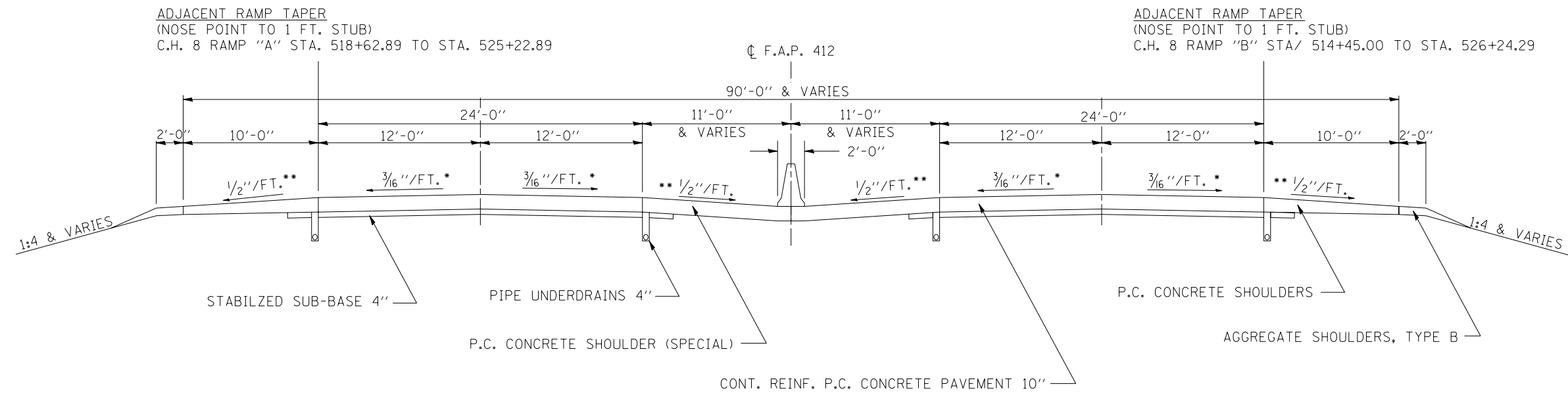
ADJACENT RAMP TAPERS
(1 FT. STUB TO NOSE POINT)
C.H. 8 RAMP "C" STA. 487+61.28 TO STA. 494+21.28

- SLOPE VARIES FOR SUPERELEVATION IN CURVES
- ** SLOPE VARIES IN SUPERELEVATION WITH MAXIMUM OF 0.08 FT/FT DIFFERENCE

FILE NAME =	USER NAME = blackrt	DESIGNED -	REVISED -	STATE OF ILLINOIS DEPARTMENT OF TRANSPORTATION	EXISTING TYPICAL SECTION	F.A.I. RTE.	SECTION	COUNTY	TOTAL SHEETS	SHEET NO.	
ci:\pw_work\PWIDOT\BLACKRT\dms84829\0570739-SHT-TYPICAL.dgn	DRAWN JJB	CHECKED -	REVISED -			39	D5 PATCHING 2009-2	MCLEAN	25	10	
PLOT SCALE = 40.0338 ' / IN.	CHECKED -	REVISOR -	REVISED -			CONTRACT NO. 70739					
PLOT DATE = 3/23/2009	DATE -	REVISOR -	REVISED -			FED. ROAD DIST. NO. ILLINOIS FED. AID PROJECT					

EXISTING TYPICAL SECTION F.A.P. 412 (I-39)

STA. 511+11.00 TO STA. 557+87.88



- * SLOPE VARIES FOR SUPERELEVATION IN CURVES
- ** SLOPE VARIES IN SUPERELEVATION WITH MAXIMUM OF 0.08 FT/FT DIFFERENCE

FILE NAME =	USER NAME = blackrt	DESIGNED -	REVISED -
et:\pwork\pwork\PIWIDOT\BLACKRT\dms84829\0570739-SHT-TYPICAL.dgn		DRAWN JJB	REVISED -
	PLOT SCALE = 40.0045' / IN.	CHECKED -	REVISED -
	PLOT DATE = 3/23/2009	DATE -	REVISED -

STATE OF ILLINOIS
DEPARTMENT OF TRANSPORTATION

EXISTING TYPICAL SECTION			
SCALE:	SHEET NO.	OF SHEETS	STA. TO STA.

F.A.I. RTE.	SECTION	COUNTY	TOTAL SHEETS	SHEET NO.
39	D5 PATCHING 2009-2	MCLEAN	25	11
CONTRACT NO. 70739				
FED. ROAD DIST. NO. ILLINOIS FED. AID PROJECT				

SCHEDULE OF QUANTITIES

TABULATION OF CLASS B PATCH, 11 INCH

I-39 /I-55 INTERCHANGE

SB I-39 CONVERGING LANES TO SB I-55 SB I-39 RAMP A TO NB I-55
NB I-39 DIVERGING LANES FROM NB I-55 NB I-39 RAMP B FROM SB I-55

STATION	LOCATION	LANE	LENGTH (FT)	WIDTH (FT)	TYPE II	TYPE III	TYPE IV	SAWCUTS	TIE BARS	DOWEL BARS	PAVEMENT FABRIC
					44200982 (SQ.YD.)	44200986 (SQ.YD.)	44200988 (SQ.YD.)	44213200 (FT)	Z0075300 (EACH)	Z0017100 (EACH)	42001200 (SQ.YD.)
116+40.00	SB I-39 TO SB I-55	SBDL	6.0	12.0	8.0	-	-	54.0	-	20.0	-
116+00.00	SB I-39 TO SB I-55	SBDL	6.0	12.0	8.0	-	-	54.0	-	20.0	-
115+40.00	SB I-39 TO SB I-55	SBDL	6.0	12.0	8.0	-	-	54.0	-	20.0	-
114+43.00	SB I-39 TO SB I-55	SBDL	6.0	12.0	8.0	-	-	54.0	-	20.0	-
114+00.00	SB I-39 TO SB I-55	SBDL	6.0	12.0	8.0	-	-	54.0	-	20.0	-
112+40.00	SB I-39 TO SB I-55	SBDL	6.0	12.0	8.0	-	-	54.0	-	20.0	-
111+65.00	SB I-39 TO SB I-55	SBDL	6.0	12.0	8.0	-	-	54.0	-	20.0	-
108+50.00	SB I-39 TO SB I-55	SBDL	6.0	12.0	8.0	-	-	54.0	-	20.0	-
100+00.00	SB I-39 TO SB I-55	SBDL	6.0	12.0	8.0	-	-	54.0	-	20.0	-
93+50.00	SB I-39 TO SB I-55	SBDL	6.0	12.0	8.0	-	-	54.0	-	20.0	-
92+00.00	SB I-39 TO SB I-55	SBDL	6.0	12.0	8.0	-	-	54.0	-	20.0	-
91+40.00	SB I-39 TO SB I-55	*SBPL*	6.0	12.0	8.0	-	-	54.0	-	20.0	-
91+40.00	SB I-39 TO SB I-55	SBDL	6.0	12.0	8.0	-	-	54.0	-	20.0	-
90+00.00	SB I-39 TO SB I-55	SBDL	6.0	12.0	8.0	-	-	54.0	-	20.0	-
89+50.00	SB I-39 TO SB I-55	SBDL	6.0	12.0	8.0	-	-	54.0	-	20.0	-
88+90.00	SB I-39 TO SB I-55	SBDL	10.0	12.0	13.3	-	-	66.0	-	20.0	-
3+25.00	SB I-39 TO NB I-55	RAMP A	6.0	16.0	10.7	-	-	66.0	-	28.0	-
3+50.00	SB I-39 TO NB I-55	RAMP A	10.0	16.0	-	17.8	-	78.0	-	28.0	17.8
27+50.00	SB I-39 TO NB I-55	RAMP A	6.0	16.0	10.7	-	-	66.0	-	28.0	-
103+50.00	NB I-39 FROM NB I-55	NBDL	15.0	12.0	-	20.0	-	81.0	-	20.0	20.0
23+35.00	NB I-39 FROM SB I-55	RAMP B	6.0	16.0	10.7	-	-	66.0	-	28.0	-
PAGE SUBTOTALS OF CLASS B PATCH, 11 INCH					165.4	37.8	0.0	1233.0	0.0	452.0	37.8

FILE NAME =	USER NAME = blackrt	DESIGNED -	REVISED -
ct:\pwork\pwork\BLACKRT\dms84829\0570739-SHT-SCHEDULE.dgn		DRAWN <i>JJB</i>	REVISED -
		CHECKED -	REVISED -
		DATE -	REVISED -

**STATE OF ILLINOIS
DEPARTMENT OF TRANSPORTATION**

SCHEDULE OF QUANTITIES

SCALE: NA SHEET NO. 1 OF 5 SHEETS STA. TO STA.

F.A. RTE.	SECTION	COUNTY	TOTAL SHEETS	SHEET NO.
39	D5 PATCHING 2009-2	MCLEAN	25	12
CONTRACT NO. 70739				
ILLINOIS FED. AID PROJECT				

SCHEDULE OF QUANTITIES

TABULATION OF CLASS B PATCH, 11 INCH

I-39 MAINLINE (SOUTHBOUND)

STATION	LOCATION	LANE	LENGTH	WIDTH	TYPE II	TYPE III	TYPE IV	SAWCUTS	TIE BARS	DOWEL BARS	PAVEMENT FABRIC
					44200982 (SQ.YD.)	44200986 (SQ.YD.)	44200988 (SQ.YD.)	44213200 (FT)	Z0075300 (EACH)	Z0017100 (EACH)	42001200 (SQ.YD.)
			(FT)	(FT)							
234+49.00	I-39 MAINLINE	SBDL	6.0	12.0	8.0	-	-	54.0	-	20.0	-
234+27.00	I-39 MAINLINE	*SBPL*	6.0	12.0	8.0	-	-	54.0	-	20.0	-
233+90.00	I-39 MAINLINE	SBDL	6.0	12.0	8.0	-	-	54.0	-	20.0	-
233+51.00	I-39 MAINLINE	SBDL	6.0	12.0	8.0	-	-	54.0	-	20.0	-
233+06.00	I-39 MAINLINE	SBDL	10.0	12.0	13.3	-	-	66.0	-	20.0	-
231+62.00	I-39 MAINLINE	SBDL	6.0	12.0	8.0	-	-	54.0	-	20.0	-
231+33.00	I-39 MAINLINE	SBDL	6.0	12.0	8.0	-	-	54.0	-	20.0	-
229+78.00	I-39 MAINLINE	SBDL	6.0	12.0	8.0	-	-	54.0	-	20.0	-
222+64.00	I-39 MAINLINE	SBDL	6.0	12.0	8.0	-	-	54.0	-	20.0	-
221+24.00	I-39 MAINLINE	SBDL	6.0	12.0	8.0	-	-	54.0	-	20.0	-
215+00.00	I-39 MAINLINE	SBDL	6.0	12.0	8.0	-	-	54.0	-	20.0	-
201+46.00	I-39 MAINLINE	SBDL	6.0	12.0	8.0	-	-	54.0	-	20.0	-
196+50.00	I-39 MAINLINE	SBDL	6.0	12.0	8.0	-	-	54.0	-	20.0	-
194+90.00	I-39 MAINLINE	SBDL	6.0	12.0	8.0	-	-	54.0	-	20.0	-
194+39.00	I-39 MAINLINE	SBDL	6.0	12.0	8.0	-	-	54.0	-	20.0	-
193+94.00	I-39 MAINLINE	SBDL	6.0	12.0	8.0	-	-	54.0	-	20.0	-
193+63.00	I-39 MAINLINE	SBDL	6.0	14.0	9.3	-	-	60.0	-	24.0	-
189+91.00	I-39 MAINLINE	SBDL	100.0	12.0	-	-	133.3	336.0	100.0	90.0	133.3
187+53.00	I-39 MAINLINE	SBDL	6.0	12.0	8.0	-	-	54.0	-	20.0	-
186+12.00	I-39 MAINLINE	SBDL	6.0	12.0	8.0	-	-	54.0	-	20.0	-
176+79.00	I-39 MAINLINE	SBDL	15.0	12.0	-	20.0	-	81.0	-	20.0	20.0
173+26.00	I-39 MAINLINE	SBDL	6.0	12.0	8.0	-	-	54.0	-	20.0	-
172+67.00	I-39 MAINLINE	SBDL	6.0	12.0	8.0	-	-	54.0	-	20.0	-
170+66.00	I-39 MAINLINE	SBDL	6.0	12.0	8.0	-	-	54.0	-	20.0	-
158+77.00	I-39 MAINLINE	SBDL	6.0	12.0	8.0	-	-	54.0	-	20.0	-
157+90.00	I-39 MAINLINE	SBDL	6.0	12.0	8.0	-	-	54.0	-	20.0	-
151+65.00	I-39 MAINLINE	SBDL	6.0	12.0	8.0	-	-	54.0	-	20.0	-
PAGE SUBTOTALS OF CLASS B PATCH, 11 INCH					206.6	20.0	133.3	1785.0	100.0	614.0	153.3

SCHEDULE OF QUANTITIES

TABULATION OF CLASS A PATCH, 10 INCH

I-39 MAINLINE (NORTHBOUND)

STATION	LOCATION	LANE	LENGTH	WIDTH	TYPE I	TYPE II	TYPE III	TYPE IV	SAWCUTS	TIE BARS	PATCHING REINFORCEMENT
					44200549 (SQ.YD.)	44200553 (SQ.YD.)	44200557 (SQ.YD.)	44200559 (SQ.YD.)	44213200 (FT)	Z0075300 (EACH)	44213000 (SQ.YD.)
475+79.00	I-39 MAINLINE	NBDL	6.0	12.0	-	8.0	-	-	66.0	-	8.0
448+13.00	I-39 MAINLINE	NBDL	6.0	6.0	4.0	-	-	-	42.0	-	4.0
381+36.00	I-39 MAINLINE	NBDL	6.0	12.0	-	8.0	-	-	66.0	-	8.0
376+37.00	I-39 MAINLINE	NBDL	6.0	6.0	4.0	-	-	-	42.0	-	4.0
372+50.00	I-39 MAINLINE	NBDL	20.0	6.0	-	13.3	-	-	84.0	20.0	13.3
360+81.00	I-39 MAINLINE	NBDL	8.0	6.0	-	5.3	-	-	48.0	-	5.3
357+31.00	I-39 MAINLINE	NBDL	6.0	12.0	-	8.0	-	-	66.0	-	8.0
352+50.00	I-39 MAINLINE	NBDL	10.0	12.0	-	13.3	-	-	78.0	-	13.3
341+50.00	I-39 MAINLINE	NBDL	8.0	6.0	-	5.3	-	-	48.0	-	5.3
339+85.00	I-39 MAINLINE	NBDL	6.0	6.0	4.0	-	-	-	42.0	-	4.0
339+36.00	I-39 MAINLINE	NBDL	6.0	6.0	4.0	-	-	-	42.0	-	4.0
334+46.00	I-39 MAINLINE	NBDL	12.0	12.0	-	-	16.0	-	84.0	-	16.0
300+00.00	I-39 MAINLINE	NBDL	6.0	6.0	4.0	-	-	-	42.0	-	4.0
287+91.00	I-39 MAINLINE	NBDL	8.0	12.0	-	10.7	-	-	72.0	-	10.7
287+10.00	I-39 MAINLINE	NBDL	6.0	12.0	-	8.0	-	-	66.0	-	8.0
285+49.00	I-39 MAINLINE	NBDL	10.0	6.0	-	6.7	-	-	54.0	-	6.7
285+01.00	I-39 MAINLINE	NBDL	15.0	6.0	-	10.0	-	-	69.0	-	10.0
278+30.00	I-39 MAINLINE	NBDL	6.0	6.0	4.0	-	-	-	42.0	-	4.0
277+09.00	I-39 MAINLINE	NBDL	6.0	6.0	4.0	-	-	-	42.0	-	4.0
273+33.00	I-39 MAINLINE	NBDL	6.0	6.0	4.0	-	-	-	42.0	-	4.0
272+88.00	I-39 MAINLINE	NBDL	6.0	6.0	4.0	-	-	-	42.0	-	4.0
272+28.00	I-39 MAINLINE	NBDL	6.0	6.0	4.0	-	-	-	42.0	-	4.0
267+90.00	I-39 MAINLINE	NBDL	6.0	6.0	4.0	-	-	-	42.0	-	4.0
264+72.00	I-39 MAINLINE	NBDL	6.0	12.0	-	8.0	-	-	66.0	-	8.0
262+90.00	I-39 MAINLINE	NBDL	6.0	10.0	-	6.7	-	-	58.0	-	6.7
261+97.00	I-39 MAINLINE	NBDL	6.0	6.0	4.0	-	-	-	42.0	-	4.0
258+18.00	I-39 MAINLINE	NBDL	6.0	6.0	4.0	-	-	-	42.0	-	4.0
256+85.00	I-39 MAINLINE	NBDL	40.0	6.0	-	-	-	26.7	144.0	40.0	26.7
256+19.00	I-39 MAINLINE	NBDL	6.0	6.0	4.0	-	-	-	42.0	-	4.0
PAGE SUBTOTALS OF CLASS A PATCH, 10 INCH					56.0	111.3	16.0	26.7	1657.0	60.0	210.0

FILE NAME =	USER NAME = blackrt	DESIGNED -	REVISED -
ct:\pw\work\PWIDOT\BLACKRT\dms84829\0570739-SHT-SCHEDULE.dgn		DRAWN JJB	REVISED -
	PLOT SCALE = 40.0177' / IN.	CHECKED -	REVISED -
	PLOT DATE = 3/23/2009	DATE -	REVISED -

**STATE OF ILLINOIS
DEPARTMENT OF TRANSPORTATION**

SCHEDULE OF QUANTITIES

SCALE: NA SHEET NO. 4 OF 5 SHEETS STA. TO STA.

F.A. RTE.	SECTION	COUNTY	TOTAL SHEETS	SHEET NO.
39	D5 PATCHING 2009-2	MCLEAN	25	15
CONTRACT NO. 70739			ILLINOIS FED. AID PROJECT	

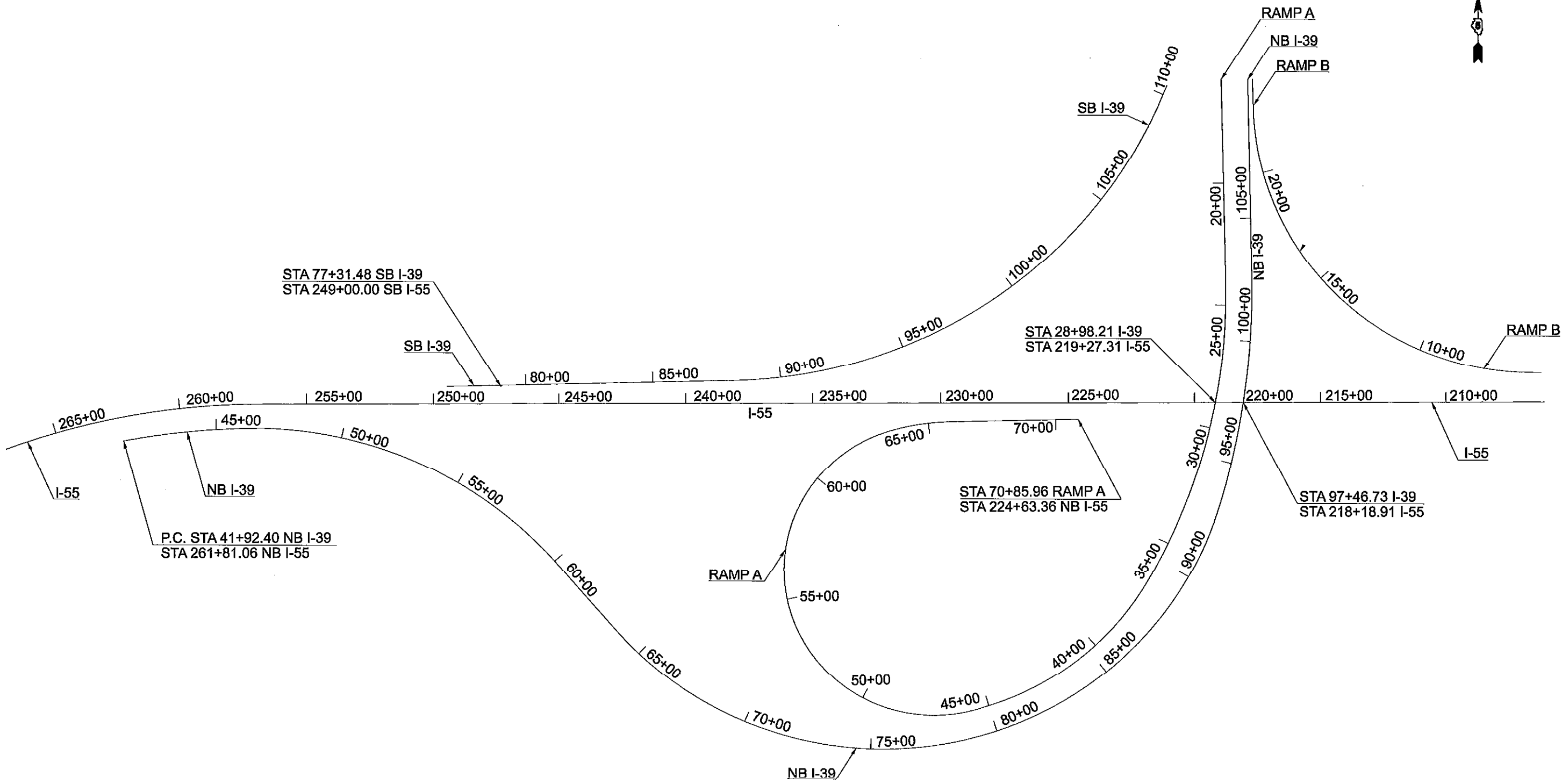
SCHEDULE OF QUANTITIES

78005110 EPOXY PAVEMENT MARKING - LINE 4 INCH

<u>LOCATION</u>	<u>DESCRIPTION</u>	<u>LENGTH (FT)</u>
DRIVING LANE EOP	WHITE SOLID	1295.0
TRAVELED WAY CL	WHITE SKIP DASH	<u>325.0</u>
<u>TOTAL =</u>		<u>1620.0</u>

78005140 EPOXY PAVEMENT MARKING - LINE 8 INCH

<u>LOCATION</u>	<u>DESCRIPTION</u>	<u>LENGTH (FT)</u>
RAMP TERMINALS	WHITE SOLID	<u>335.0</u>
<u>TOTAL =</u>		<u>335.0</u>



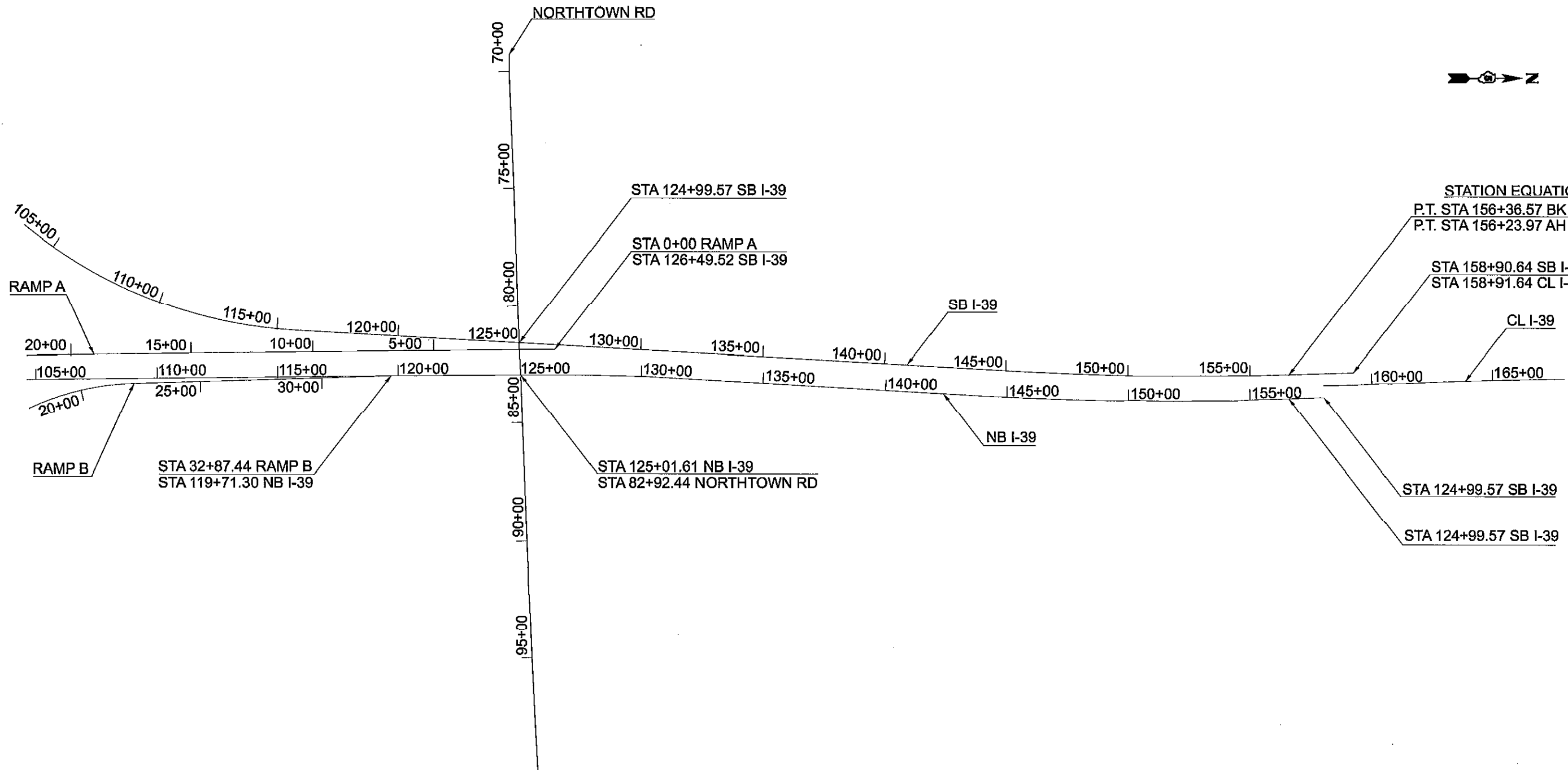
FILE NAME =	USER NAME = blackrt	DESIGNED -	REVISED -
ct:\pw\work\PIWID01\BLACKRT\dms84829\0570739-SHT-DETAILS.dgn		DRAWN - JJB	REVISED -
		CHECKED -	REVISED -
		DATE -	REVISED -

**STATE OF ILLINOIS
DEPARTMENT OF TRANSPORTATION**

I-39 / I-55 INTERCHANGE STATIONING

SCALE: SHEET NO. 1 OF 2 SHEETS STA. TO STA.

F.A.I. RTE.	SECTION	COUNTY	TOTAL SHEETS	SHEET NO.
39	D5 PATCHING 2009-2	MCLEAN	25	19
				CONTRACT NO. 70739
ILLINOIS FED. AID PROJECT				



STATION EQUATION
 P.T. STA 156+36.57 BK SB I-39 =
 P.T. STA 156+23.97 AH SB I-39

STA 158+90.64 SB I-39
 STA 158+91.64 CL I-39

STA 124+99.57 SB I-39
 STA 124+99.57 SB I-39

FILE NAME =	USER NAME = blackrt	DESIGNED -	REVISED -
et:\pwork\pwidot\BLACKRT\dms84829\0570739-SHT-DETAILS.dgn		DRAWN - JJB	REVISED -
	PLOT SCALE = 100.0338' / IN.	CHECKED -	REVISED -
	PLOT DATE = 3/23/2009	DATE -	REVISED -

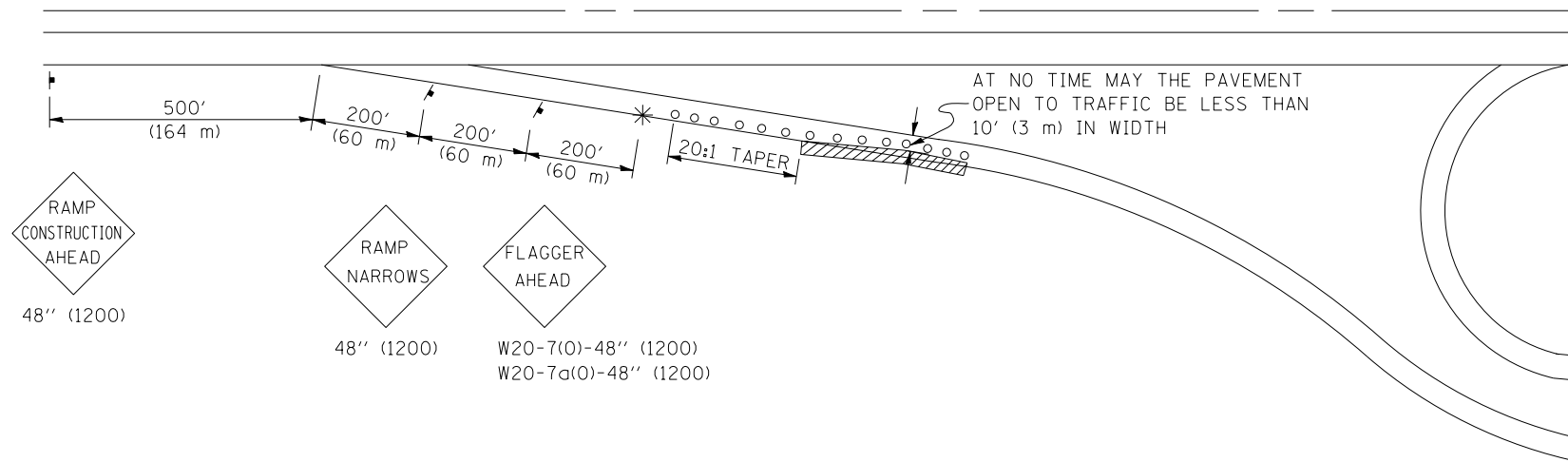
**STATE OF ILLINOIS
 DEPARTMENT OF TRANSPORTATION**

I-39 /I-55 INTERCHANGE STATIONING

SCALE: SHEET NO. 2 OF 2 SHEETS STA. TO STA.

F.A.I. RTE.	SECTION	COUNTY	TOTAL SHEETS	SHEET NO.
39	D5 PATCHING 2009-2	MCLEAN	25	20
ILLINOIS FED. AID PROJECT			CONTRACT NO. 70739	

**APPLICATION NO. 1
DAY OPERATION ONLY
PARTIAL RAMP CLOSURE**



SYMBOLS

- (APPLICATION NO. 1) TYPE I OR II BARRICADES OR DRUMS @ 50' (15 m) CTS.
- ⊗ (APPLICATION NO. 2) TYPE I OR II BARRICADES OR DRUMS @ 25' (7.5 m) CTS. W/STEADY BURNING LIGHTS
- * (APPLICATION NO. 1) FLAGGER PLACED AS DIRECTED BY THE ENGINEER
- ▬ SIGN ON PORTABLE OR PERMANENT SUPPORT
- ▨ WORK AREA

TYPICAL APPLICATIONS

- PAVEMENT PATCHING
- PIPE UNDERDRAINS
- HMA RESURFACING

GENERAL NOTES

CONSTRUCTION OPERATIONS SHALL BE CONFINED TO AN AREA NARROW ENOUGH THAT A MINIMUM OF 10' (3 m) OF PAVEMENT SHALL BE OPEN TO TRAFFIC AT ALL TIMES.

FULL WIDTH PAVEMENT ON THE RAMPS SHALL BE OPEN TO TRAFFIC AT NIGHT.

WHEN NO WORK IS BEING PERFORMED, THE FLAGGER WILL NOT BE REQUIRED. IF THE FLAGGER IS NOT PRESENT, THE FLAGGER SIGNS SHALL BE REMOVED OR COVERED.

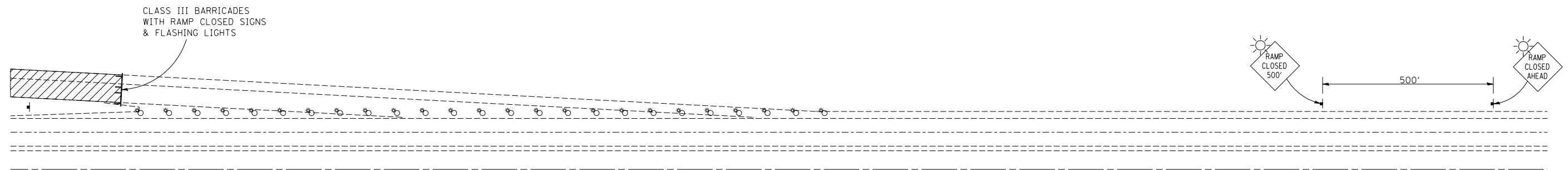
ALL SIGNS SHALL BE POST MOUNTED IF WORK IN THE AREA EXCEEDS FOUR DAYS OF DAYTIME OPERATIONS.

LONGITUDINAL DIMENSIONS MAY BE ADJUSTED SLIGHTLY TO FIT FIELD CONDITIONS.

ALL VEHICLES, EQUIPMENT, WORKERS (EXCEPT FLAGGER) AND THEIR ACTIVITIES ARE RESTRICTED AT ALL TIMES TO ONE SIDE OF THE PAVEMENT UNLESS OTHERWISE AUTHORIZED BY THE DISTRICT ENGINEER.

Traffic Control for all ramps shall be in accordance with the appropriate application of plan detail TRAFFIC CONTROL FOR RAMPS and will not be paid for separately, but shall be included in the contract lump sum prices for Traffic Control and Protection, Standard 701401 and Traffic Control and Protection, Standard 701406.

**APPLICATION NO. 2
RAMP CLOSURE**



GENERAL NOTES

STEADY BURN LIGHTS ARE NOT REQUIRED FOR DAYTIME OPERATIONS.

CONTACT THE DISTRICT TRAFFIC OPERATIONS ENGINEER AT 217-465-4181, ONE WEEK PRIOR TO CLOSING THE RAMP.

Note: All dimensions are in INCHES (millimeters) unless otherwise shown.

FILE NAME =	USER NAME = blackrt	DESIGNED -	REVISED -
c:\pwork\p\WIDOT\BLACKRT\dms84829\0570739-SHT-DETAILS.dgn		DRAWN -	REVISED -
		CHECKED -	REVISED -
		DATE -	REVISED -

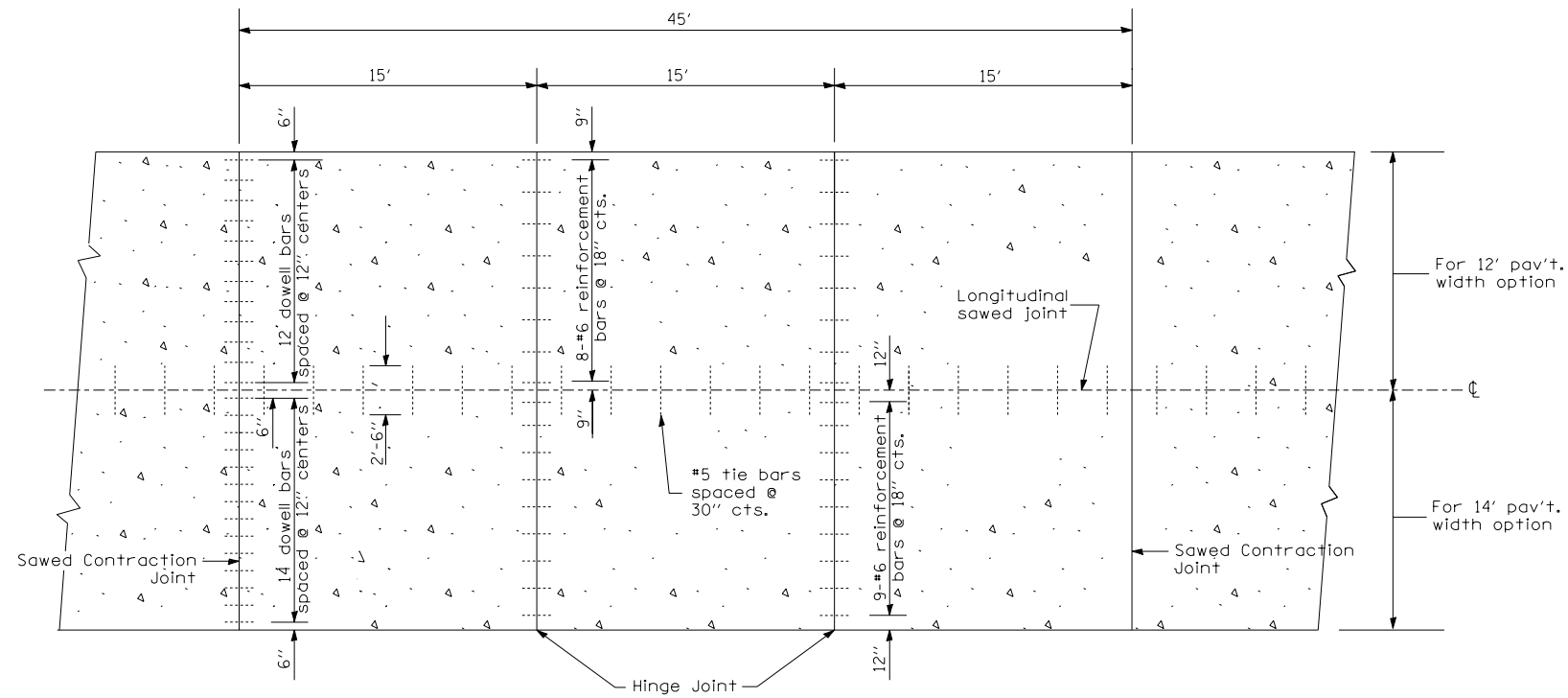
**STATE OF ILLINOIS
DEPARTMENT OF TRANSPORTATION**

**DETAIL OF TRAFFIC CONTROL FOR RAMPS, PARTIAL RAMP CLOSURE,
DISTRICT 5 DETAIL NO. 70103710**

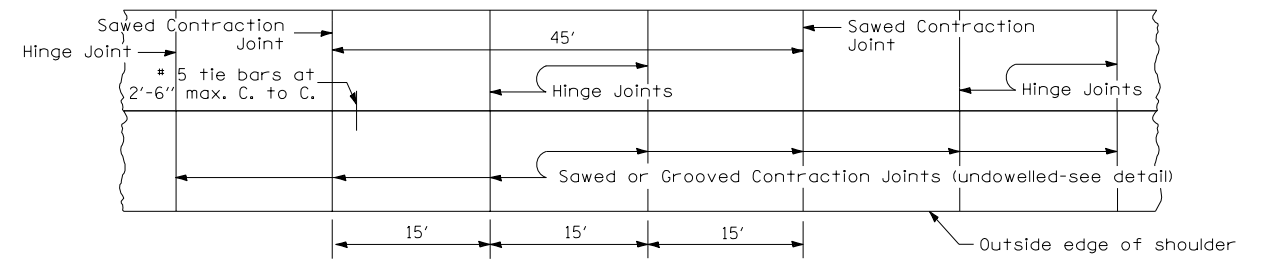
SCALE: SHEET NO. OF SHEETS STA. TO STA.

DISTRICT 5 DETAIL NO. 70103710

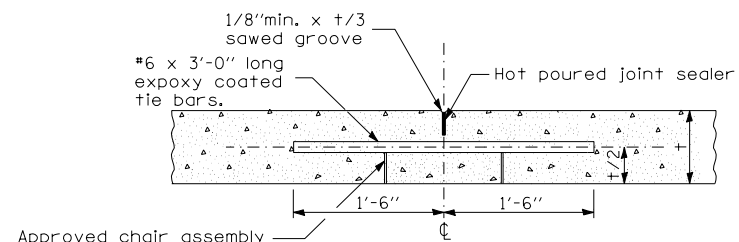
F.A.I. RTE.	SECTION	COUNTY	TOTAL SHEETS	SHEET NO.
39	D5 PATCHING 2009-2	MCLEAN	25	21
CONTRACT NO. 70739				
FED. ROAD DIST. NO. ILLINOIS FED. AID PROJECT				



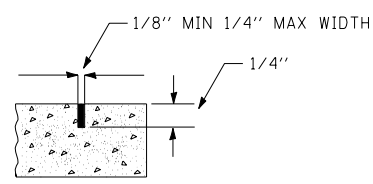
PLAN
EXISTING JOINTED PORTLAND CEMENT CONCRETE PAVEMENT



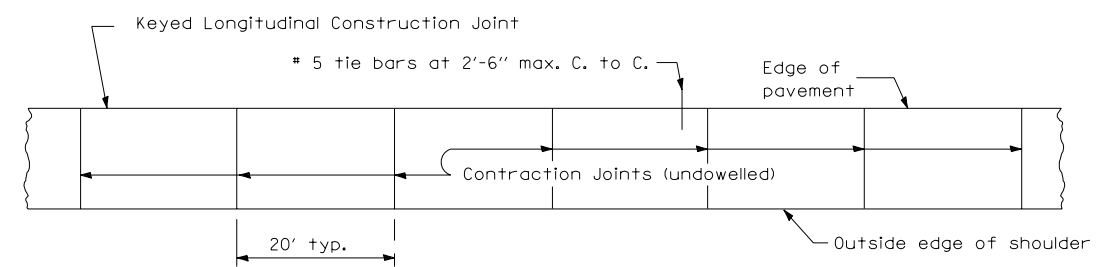
PLAN
TYPICAL P.C.C. PAVED SHOULDER ADJACENT TO JOINTED PAVEMENT



DETAIL OF HINGE JOINT



DETAIL OF
Sawed or Grooved
Contraction Joint
For
TYPICAL P.C.C. PAVED SHOULDER

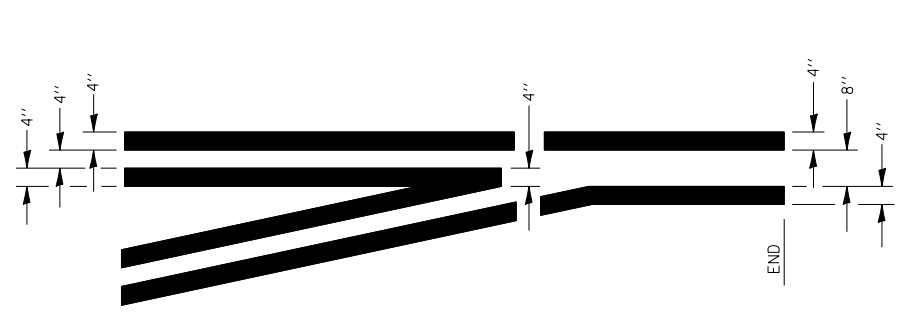


PLAN
TYPICAL P.C.C. PAVED SHOULDER ADJACENT TO CONTINUOUSLY REINFORCED PAVEMENT

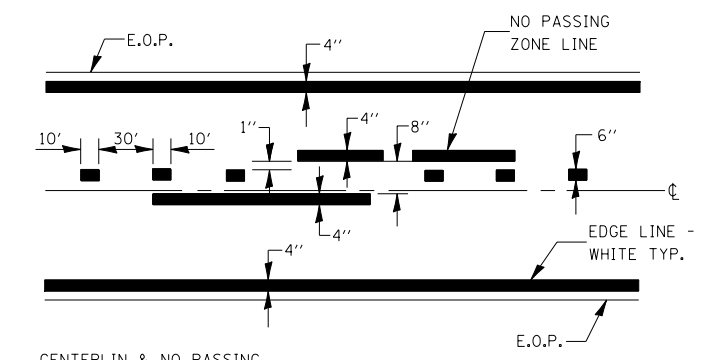
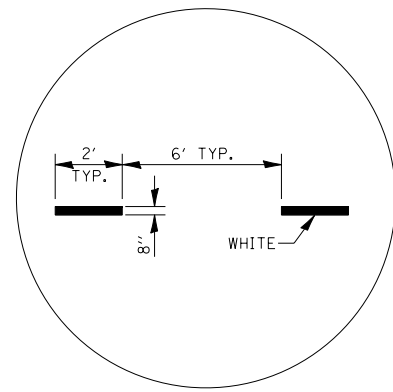
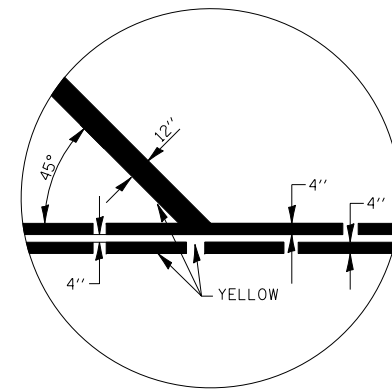
GENERAL NOTE

#4 tie bars may be used when the pavement is less than 9" thick.

FILE NAME =	USER NAME = blackrt	DESIGNED -	REVISED -	STATE OF ILLINOIS DEPARTMENT OF TRANSPORTATION	DETAILS OF EXISTING JOINTED P.C.C. PAVEMENT(HINGE-JOINT) AND ADJACENT P.C.C. SHOULDER	F.A.I. RTE.	SECTION	COUNTY	TOTAL SHEETS	SHEET NO.
es:\pwork\PWIDOT\BLACKRT\dms84829\0570739-SHT-DETAILS.dgn	739-SHT-DETAILS.dgn	DRAWN -	REVISED -			39	D5 PATCHING 2009-2	MCLEAN	25	22
PLOT SCALE = 40.0619 1/ IN.		CHECKED -	REVISED -			CONTRACT NO. 70739				
PLOT DATE = 3/23/2009		DATE -	REVISED -			FED. ROAD DIST. NO.	ILLINOIS	FED. AID PROJECT		
					SCALE:	SHEET NO.	OF SHEETS	STA.	TO STA.	

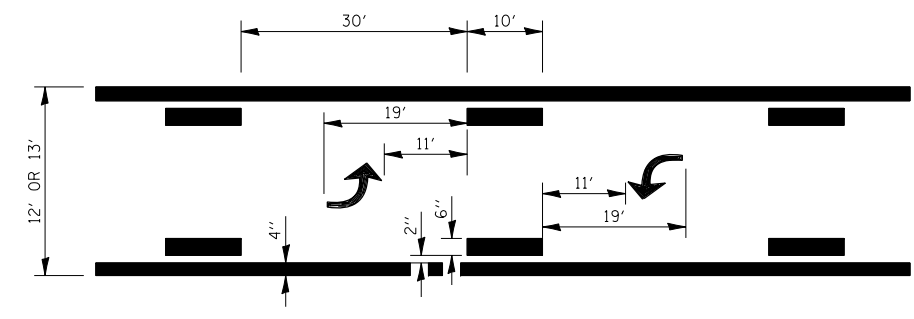


**TYPICAL APPLICATION
@ LEFT TURN LANES**

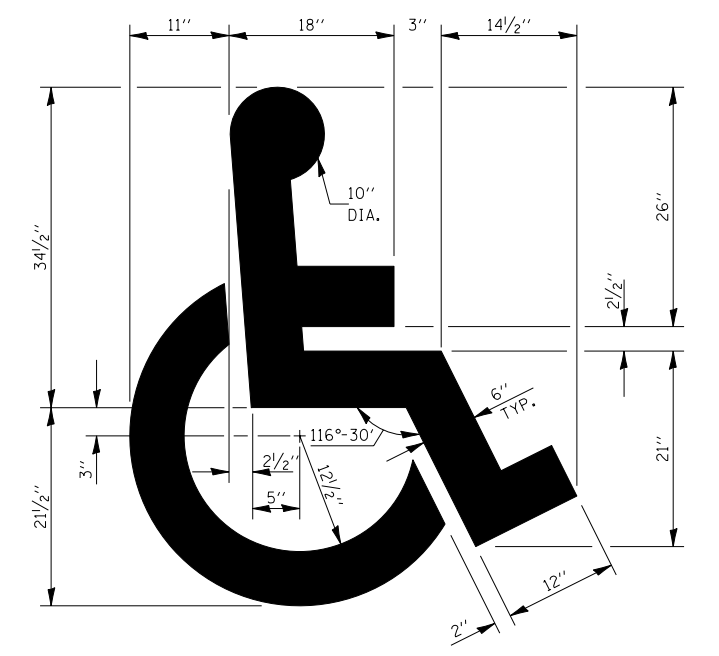
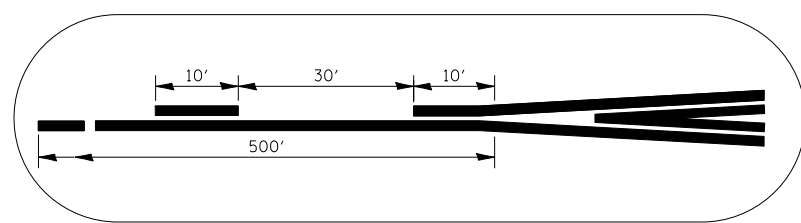
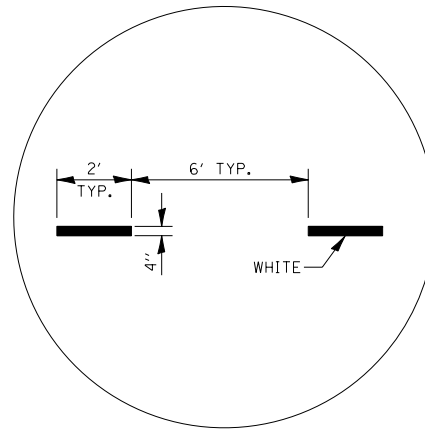


(SEE TYPICAL SECTIONS)

PAVEMENT MARKING



**TYPICAL APPLICATION @
BI-DIRECTIONAL TURN LANE**



**TYPICAL DETAIL FOR
PAINTING HANDICAP MARKINGS**

Note: All dimensions are in INCHES (millimeters) unless otherwise shown.

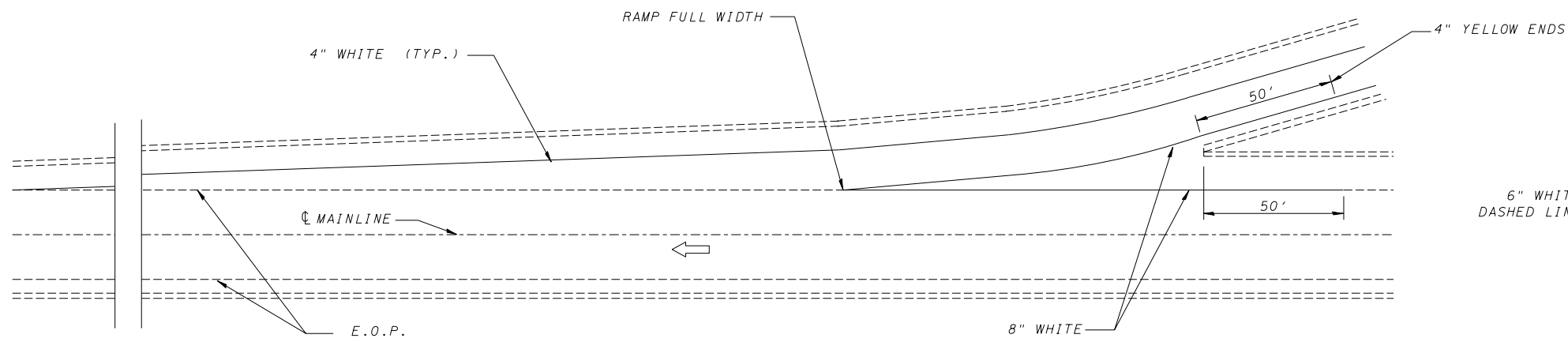
FILE NAME =	USER NAME = blackrt	DESIGNED -	REVISED - 11/06
c:\pwork\pwork\BLACKRT\dms84829\0570739-SHT-DETAILS.dgn		DRAWN -	REVISED -
	PLOT SCALE = 40.0619' / IN.	CHECKED -	REVISED -
	PLOT DATE = 3/23/2009	DATE -	REVISED -

**STATE OF ILLINOIS
DEPARTMENT OF TRANSPORTATION**

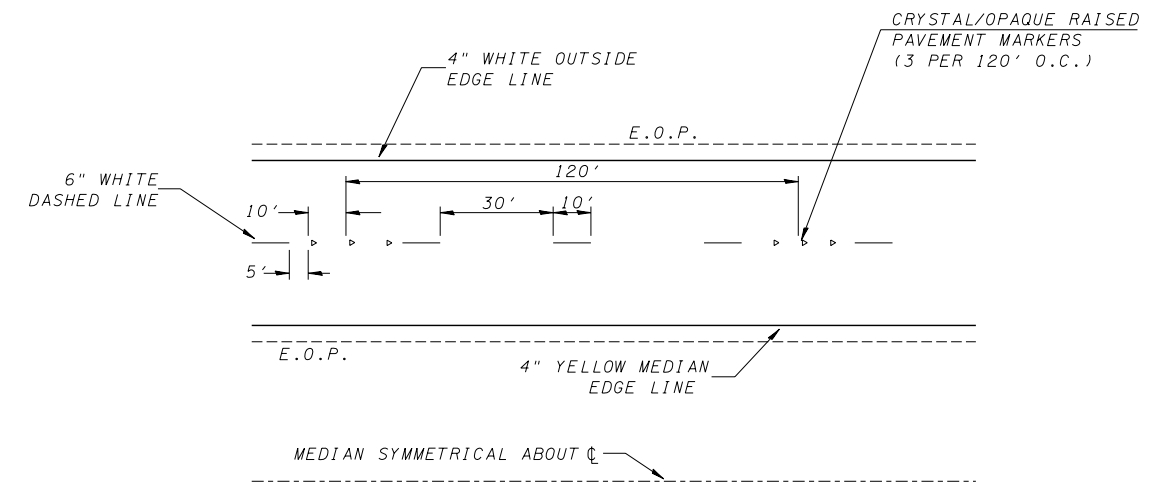
PAVEMENT MARKING (MCLEAN COUNTY "SPOT" IMPROVEMENTS ONLY)

SCALE: SHEET NO. 1 OF 3 SHEETS STA. TO STA.

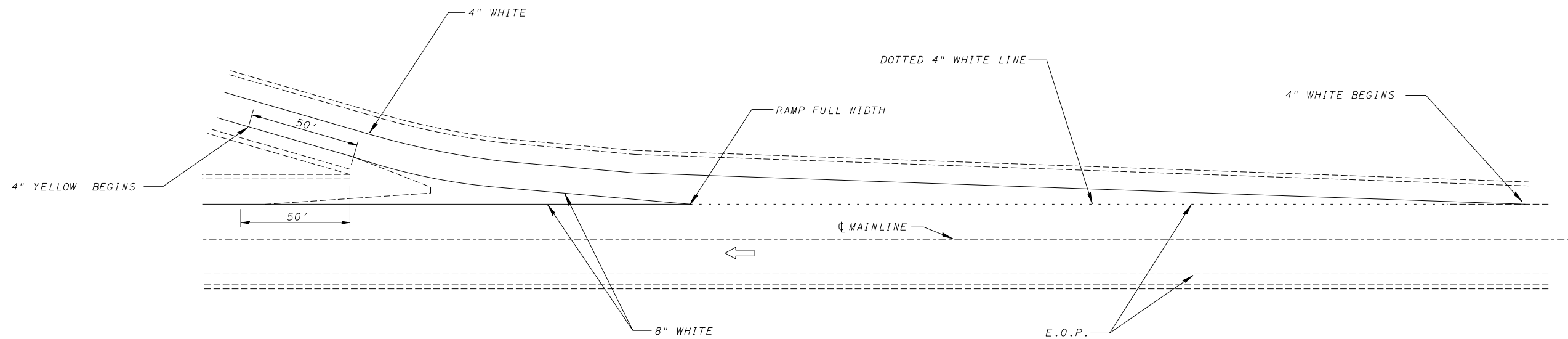
DISTRICT 5 DETAIL NO. 7800CCCC				
F.A.I. RTE.	SECTION	COUNTY	TOTAL SHEETS	SHEET NO.
39	D5 PATCHING 2009-2	MCLEAN	25	23
CONTRACT NO. 70739				
FED. ROAD DIST. NO.	ILLINOIS FED. AID PROJECT			



TYPICAL PAVEMENT MARKING FOR ENTRANCE RAMP TERMINALS



TYPICAL PAVEMENT MARKINGS



TYPICAL PAVEMENT MARKINGS FOR EXIT RAMP TERMINALS

Note: All dimensions are in INCHES (millimeters) unless otherwise shown.

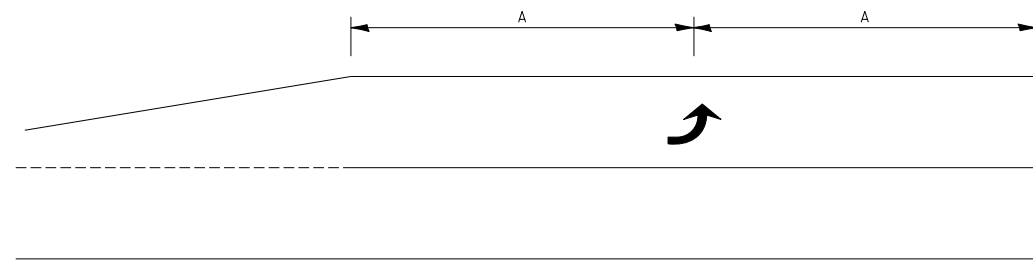
FILE NAME =	USER NAME = blackrt	DESIGNED -	REVISED -
ce:\pw\work\PWIDOT\BLACKRT\dms84829\0570739-SHT-DETAILS.dgn		DRAWN -	REVISED -
	PLOT SCALE = 40.0619" / IN.	CHECKED -	REVISED -
	PLOT DATE = 3/23/2009	DATE -	REVISED -

**STATE OF ILLINOIS
DEPARTMENT OF TRANSPORTATION**

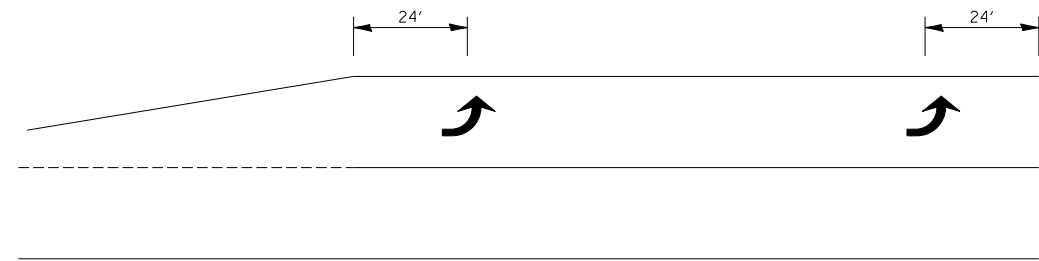
PAVEMENT MARKING (MCLEAN COUNTY "SPOT" IMPROVEMENTS ONLY)

SCALE: SHEET NO. OF SHEETS STA. TO STA.

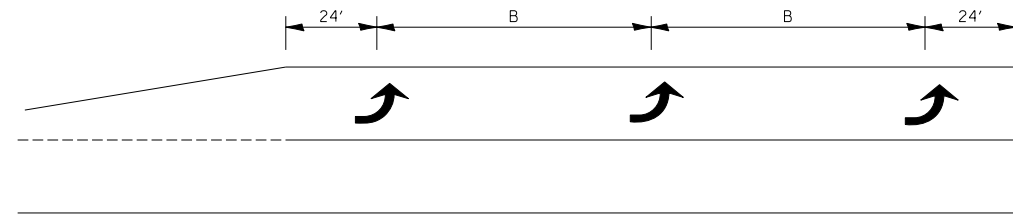
DISTRICT 5 DETAIL NO. 7800CCCC				
F.A.I. RTE.	SECTION	COUNTY	TOTAL SHEETS	SHEET NO.
39	D5 PATCHING 2009-2	MCLEAN	25	24
CONTRACT NO. 70739				
FED. ROAD DIST. NO.		ILLINOIS FED. AID PROJECT		



99' AND UNDER

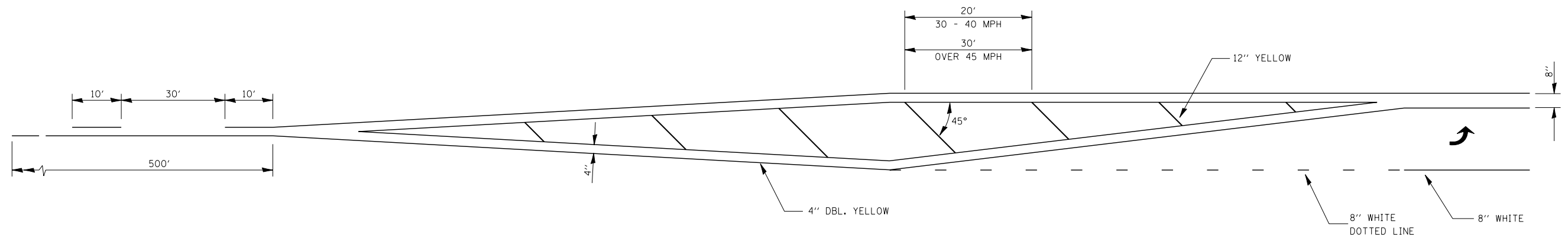


100' TO 149'



150' AND LONGER

**TYPICAL PLACEMENT OF ARROWS
IN TURN LANES**



Note: All dimensions are in INCHES (millimeters) unless otherwise shown.

DISTRICT 5 DETAIL NO. 7800CCCC

FILE NAME =	USER NAME = blackrt	DESIGNED -	REVISED -
es:\pwork\PWIDOT\BLACKRT\dms84829\0570739-SHT-DETAILS.dgn		DRAWN -	REVISED -
	PLOT SCALE = 40.0619 1/ IN.	CHECKED -	REVISED -
	PLOT DATE = 3/23/2009	DATE -	REVISED -

**STATE OF ILLINOIS
DEPARTMENT OF TRANSPORTATION**

PAVEMENT MARKING (MCLEAN COUNTY "SPOT" IMPROVEMENTS ONLY)

SCALE: SHEET NO. 3 OF 3 SHEETS STA. TO STA.

F.A.I. RTE.	SECTION	COUNTY	TOTAL SHEETS	SHEET NO.
39	D5 PATCHING 2009-2	MCLEAN	25	25
CONTRACT NO. 70739				
FED. ROAD DIST. NO.		ILLINOIS FED. AID PROJECT		