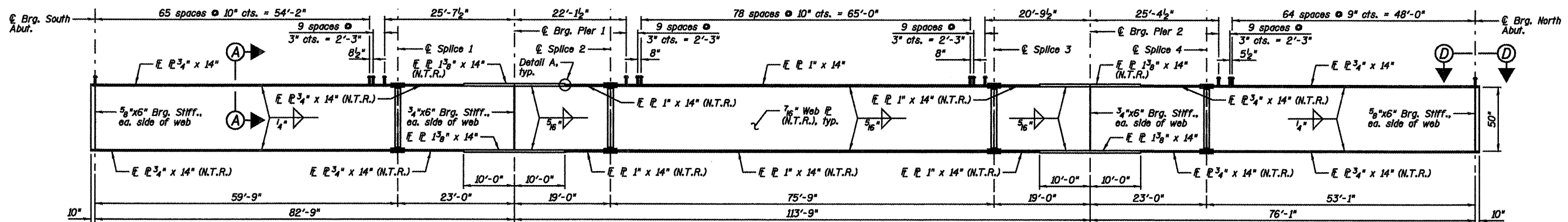
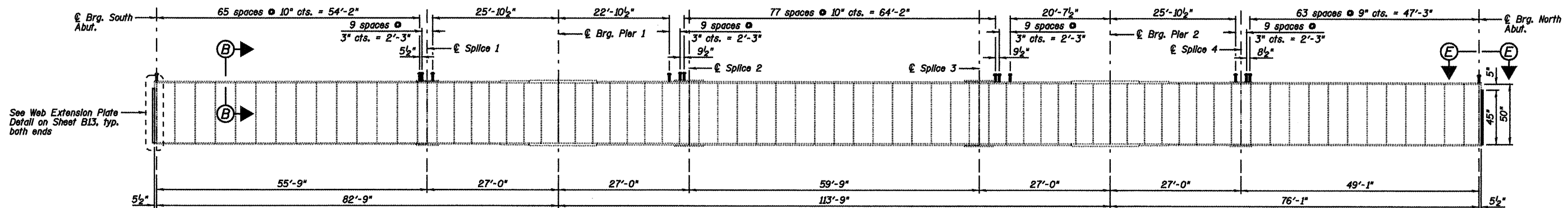


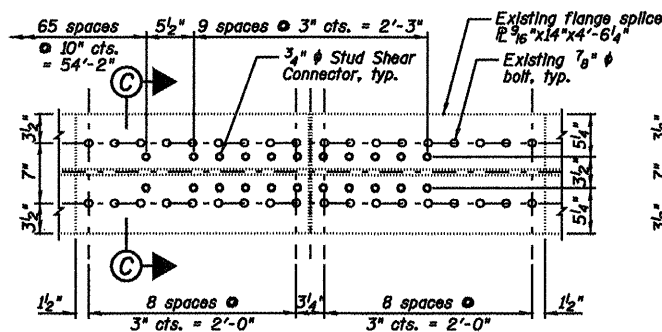
STATE OF ILLINOIS  
DEPARTMENT OF TRANSPORTATION



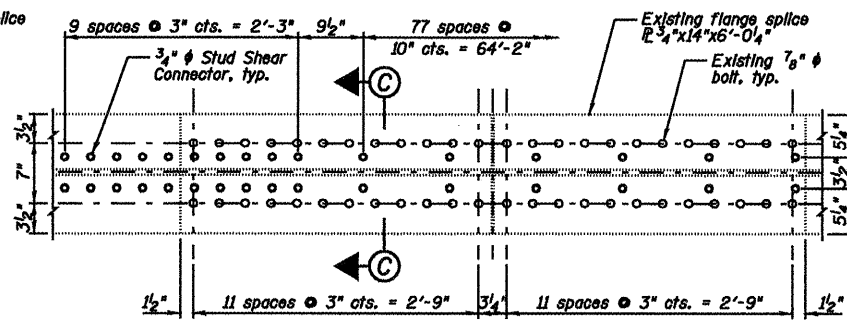
PROPOSED GIRDER ELEVATION



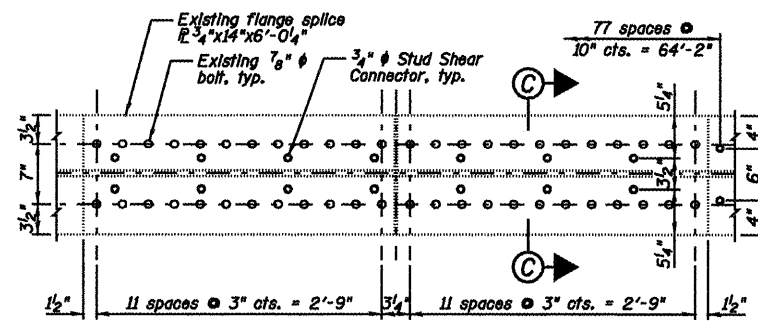
EXISTING GIRDER ELEVATION



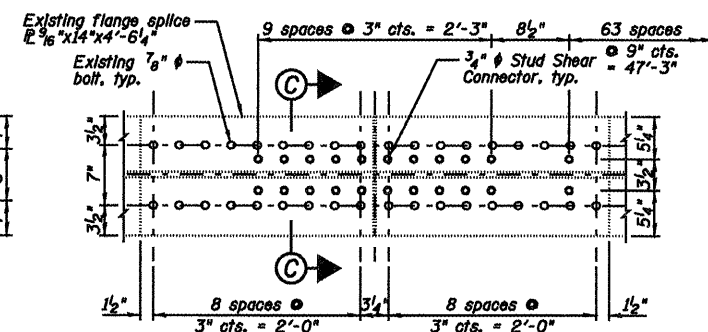
STUD SHEAR CONNECTORS -  
PLAN AT SPLICE 1



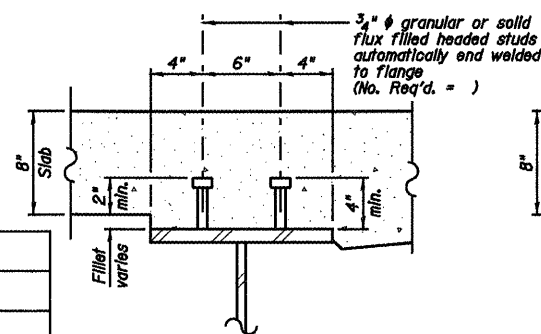
STUD SHEAR CONNECTORS -  
PLAN AT SPLICE 2



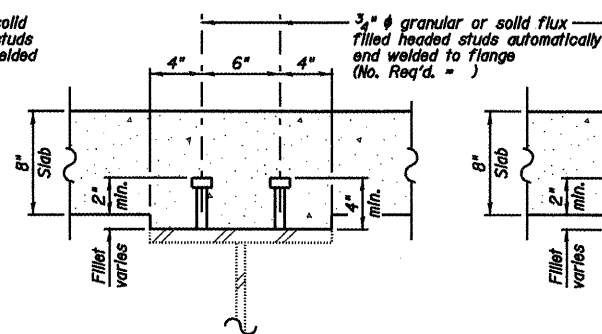
STUD SHEAR CONNECTORS -  
PLAN AT SPLICE 3



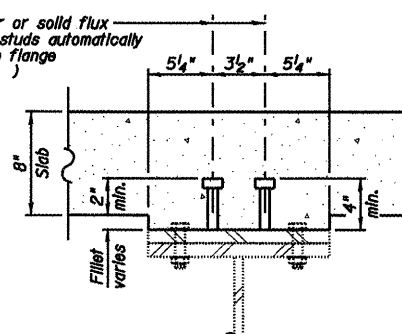
STUD SHEAR CONNECTORS -  
PLAN AT SPLICE 4



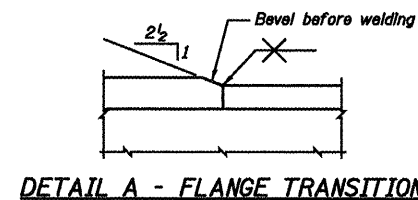
SECTION A-A



SECTION B-B



SECTION C-C



DETAIL A - FLANGE TRANSITION

NOTES:

- 1) Load carrying components designated N.T.R. shall conform to the Supplemental Requirements for Notch Toughness, Zone 2.
- 2) All girder flange plates, web plates, splice plates and bearing stiffener plates shall be AASHTO M270 Grade 50.
- 3) See Sheet B13 for Sections D-D and E-E.

STRUCTURAL STEEL  
STRUCTURE NO. 084-0028

DESIGNED	JML
CHECKED	MSW
DRAWN	DJM
CHECKED	MGO/MSW

DATE 12/16/08

FARNSWORTH GROUP, INC.

CONSULTING ENGINEERS - 2709 MCGRAW DRIVE BLOOMINGTON, ILLINOIS 61704 (309) 663-8435 / (309) 663-1571 FAX

SHEET NO. B10 19 SHEETS	F.A.I. RTE.	SECTION	COUNTY	TOTAL SHEETS	SHEET NO.
	55	(84-3HB-6)BR-F	SANGAMON	21	12
	SN 084-0028		CONTRACT NO. 72C50		
FED. ROAD DIST. NO. 6 ILLINOIS FED. AID PROJECT					

24-8181