

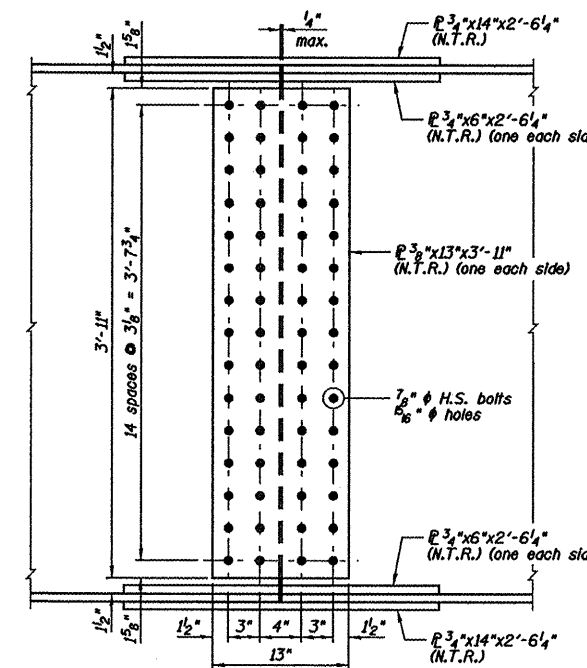
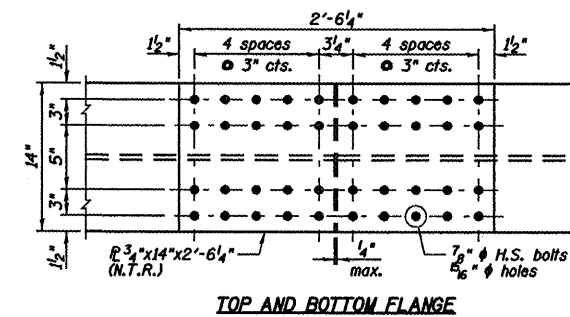
STATE OF ILLINOIS
DEPARTMENT OF TRANSPORTATION

INTERIOR GIRDER MOMENT TABLE					
	0.4 Sp. 1	Pier 1	0.5 Sp. 2	Pier 2	0.6 Sp. 3
I_s	(in ⁴) 17429	32995	22116	32995	17429
$I_c(n)$	(in ⁴) 40581	-	48002	-	40581
$I_c(3n)$	(in ⁴) 30457	-	36081	-	30457
S_s	(in ³) 677	1242	851	1242	677
$S_c(n)$	(in ³) 911	-	1097	-	911
$S_c(3n)$	(in ³) 837	-	1013	-	837
ρ	(k/')	1.291	0.794	1.291	0.766
M_D	(k)	1288	458	1187	217
s_D	(k/')	-	0.435	-	0.435
M_{sD}	(k)	-	294	-	143
M_L	(k)	505	670	481	499
M_I	(k)	113	141	109	124
$S_3 [M_L + I]$	(k)	1030	1352	983	1038
M_a	(k)	3013	2735	2821	1818
M_u	(k)	-	3871	-	3386
$f_s \rho$ non-comp	(ksi)	12.4	6.5	11.5	3.8
$f_s \rho$ (comp)	(ksi)	-	3.5	-	2.1
$f_s S_3 [M_L + M_I]$	(ksi)	10.0	14.8	9.5	13.7
f_s (Overload)	(ksi)	22.4	24.7	21.0	19.6
f_s (Total)	(ksi)	29.1	-	27.3	-
VR	(k)	-	42.7	-	48.4

EXTERIOR GIRDER MOMENT TABLE					
	0.4 Sp. 1	Pier 1	0.5 Sp. 2	Pier 2	0.6 Sp. 3
I_s	(in ⁴) 18080	29968	22767	29968	18080
$I_c(n)$	(in ⁴) 42305	-	49613	-	42305
$I_c(3n)$	(in ⁴) 31445	-	37009	-	31445
S_s	(in ³) 702	1136	876	1136	702
$S_c(n)$	(in ³) 961	-	1146	-	961
$S_c(3n)$	(in ³) 876	-	1051	-	876
ρ	(k/')	1.348	0.873	1.348	0.845
M_D	(k)	1348	520	1244	245
s_D	(k/')	-	0.435	-	0.435
M_{sD}	(k)	-	302	-	146
M_L	(k)	464	642	441	471
M_I	(k)	104	134	100	117
$S_3 [M_L + I]$	(k)	947	1293	902	980
M_a	(k)	2983	2750	2789	1782
M_u	(k)	-	5705	-	4983
$f_s \rho$ non-comp	(ksi)	14.2	7.1	13.1	4.2
$f_s \rho$ (comp)	(ksi)	-	3.4	-	2.0
$f_s S_3 [M_L + M_I]$	(ksi)	10.0	13.5	9.5	12.2
f_s (Overload)	(ksi)	24.2	24.1	22.7	18.4
f_s (Total)	(ksi)	31.5	-	29.5	-
VR	(k)	-	40.1	-	45.4

INTERIOR GIRDER REACTION TABLE				
	S. Abut.	Pier 1	Pier 2	N. Abut.
RR	(k)	137.5	131.7	28.6
R _L	(k)	54.2	53.0	34.5
R _I	(k)	11.9	12.2	8.6
R _{Total}	(k)	203.6	196.9	71.7

EXTERIOR GIRDER REACTION TABLE				
	S. Abut.	Pier 1	Pier 2	N. Abut.
RR	(k)	145.6	139.5	30.8
R _L	(k)	50.9	49.8	32.5
R _I	(k)	11.2	11.5	8.1
R _{Total}	(k)	207.7	200.8	71.4



SPLICE DETAILS
(8 - Required)

NOTES:

- 1.) Load carrying components designated N.T.R. shall conform to the Supplemental Requirements for Notch Toughness, Zone 2.
- 2.) All girder flange plates, web plates, splice plates and bearing stiffener plates shall be AASHTO M270 Grade 50.

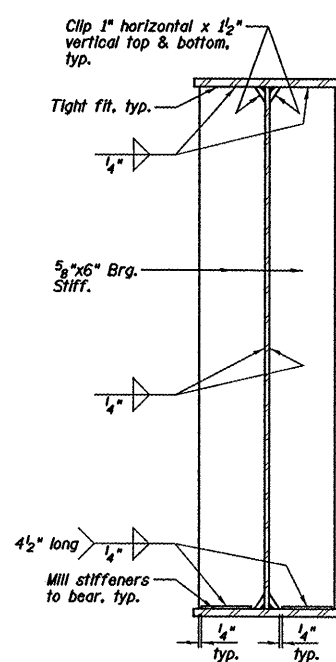
STRUCTURAL STEEL
STRUCTURE NO. 084-0028

SHEET NO. B11	F.A.I. RTE.	SECTION	COUNTY	TOTAL SHEETS	SHEET NO.
	55	(84-3HB-6)BR-F	SANGAMON	21	13
19 SHEETS	SN 084-0028		CONTRACT NO. 72C50		
FED. ROAD DIST. NO. 6 ILLINOIS FED. AID PROJECT					

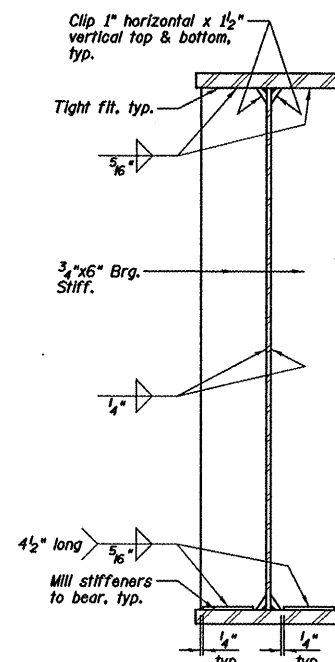
DESIGNED	JML
CHECKED	MSW
DRAWN	DJM
CHECKED	MGO/MSW

DATE 12/16/08

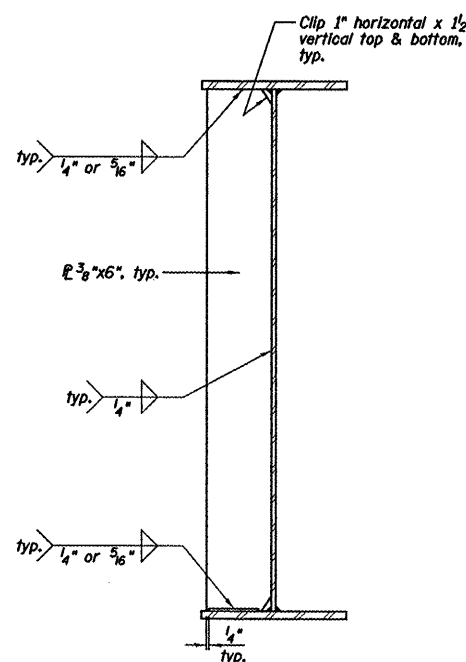
FARNSWORTH GROUP, INC.



SECTION @ ABUTMENTS



SECTION @ PIERS



SECTION @ CROSS FRAME CF2

Note: Connecting plate not required on outside face of plate girder.