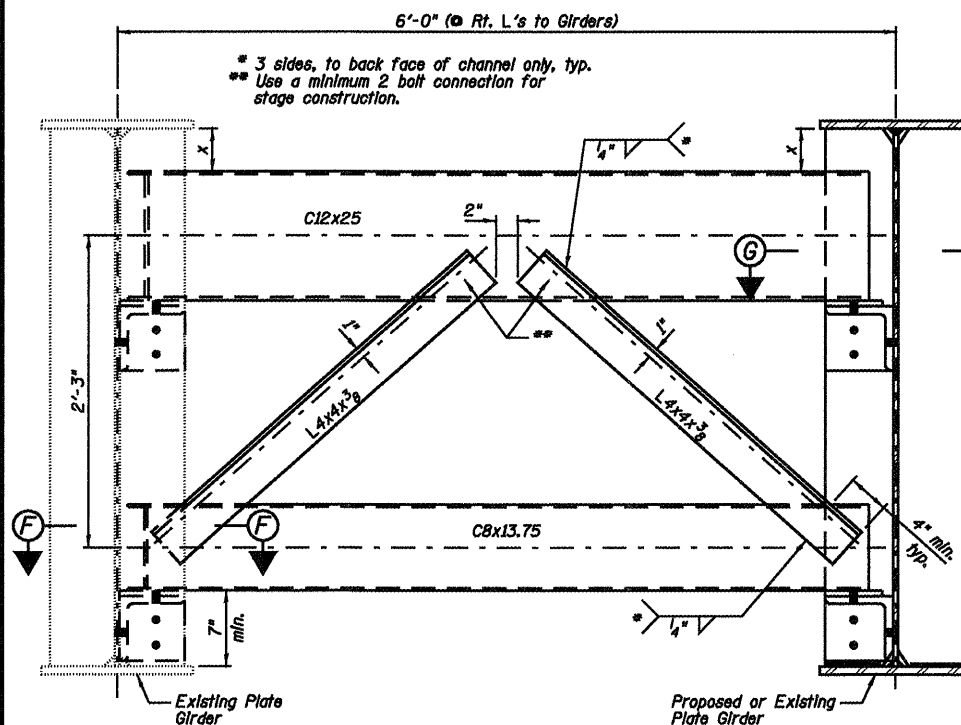
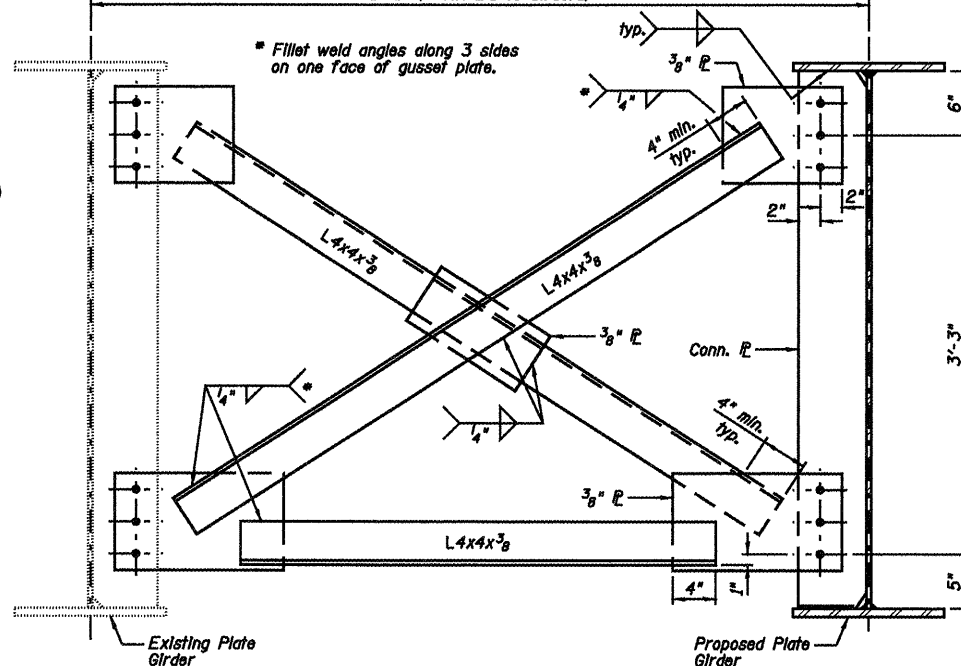


STATE OF ILLINOIS  
DEPARTMENT OF TRANSPORTATION  
6'-0" (© Rt. L's to Girders)



TYPICAL END CROSS FRAME AT SOUTH ABUTMENT - CF1  
(5 - Required)

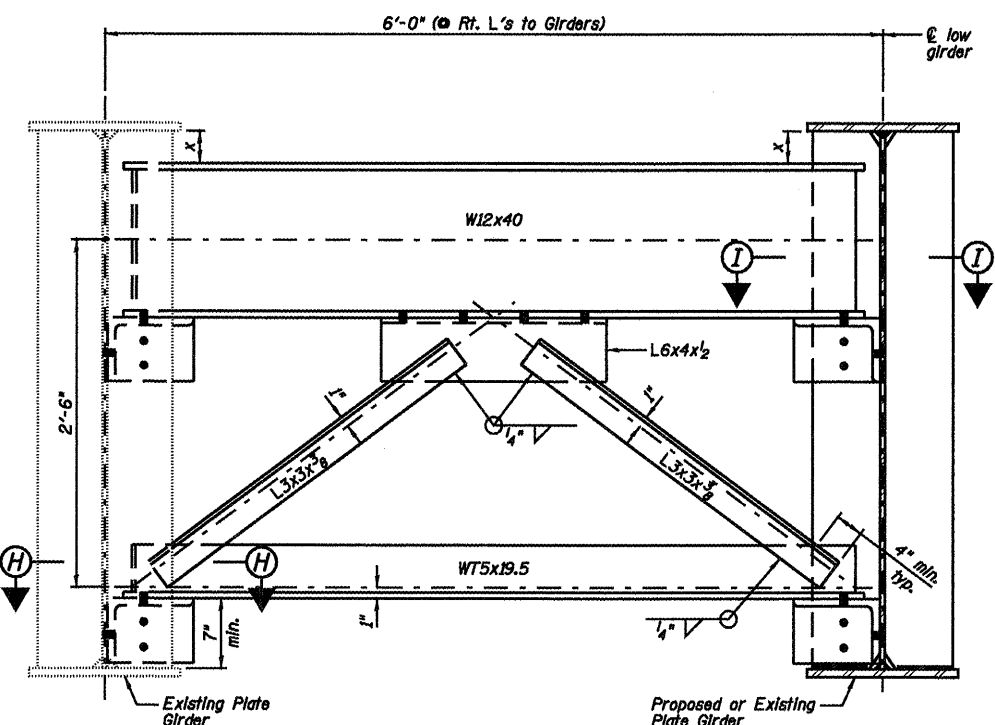
- Notes: 1.) Detail 5/8"  $\phi$  holes for all 3/4"  $\phi$  bolts.  
2.) Two hardened washers shall be required for each set of oversized holes.  
3.) Place diaphragm with projected legs outward from abutment backwall.  
4.) Bearing Stiffeners shall be welded to flanges when used as cross frame Connection Plates.



TYPICAL INTERIOR CROSS FRAME - CF2 (CONNECTION "A")  
(15 - Required)

- Notes: 1.) See Sheet B9 for Cross Frame Connection "A" locations.  
2.) Detail 5/8"  $\phi$  holes for all 3/4"  $\phi$  bolts.  
3.) Two hardened washers shall be required for each set of oversized holes.  
4.) For existing to proposed connection, match existing bolt holes. The Fabrication Contractor shall provide connection details for all existing to proposed connections per the existing shop drawings.

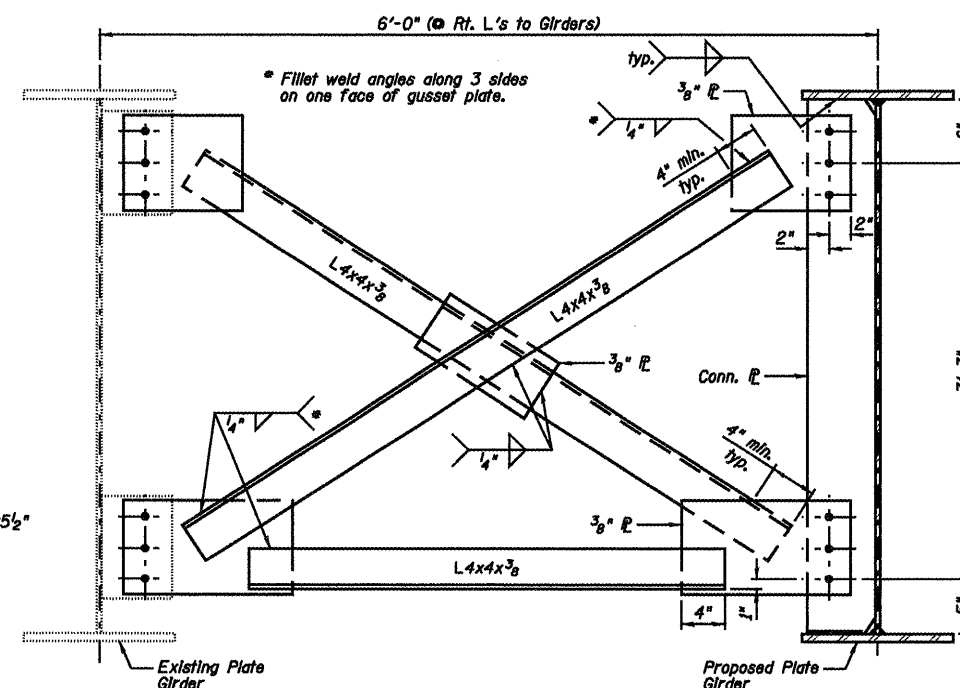
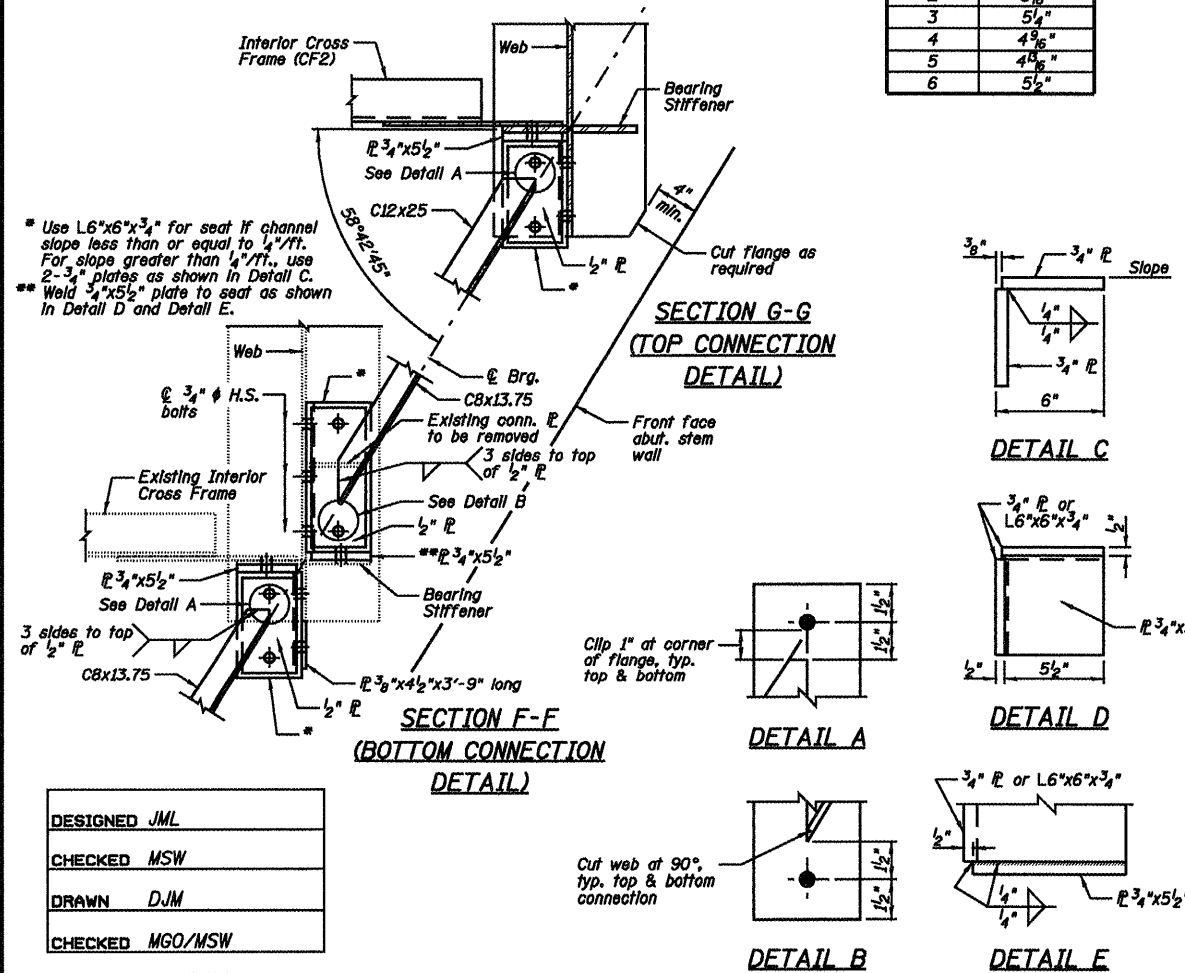
SOUTH ABUTMENT TABLE	
Girder No.	"x" Dimension
1	5 1/2"
2	5 1/2"
3	5 1/2"
4	4 3/4"
5	4 3/4"
6	5 1/2"



TYPICAL END CROSS FRAME AT NORTH ABUTMENT - CF3  
(5 - Required)

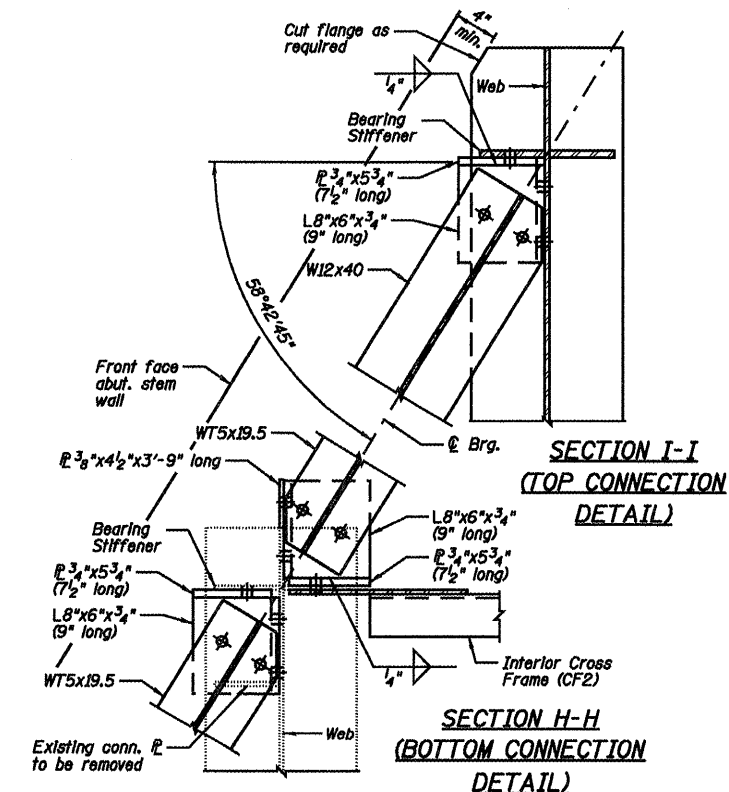
- Notes: 1.) Detail 5/8"  $\phi$  holes for all 3/4"  $\phi$  bolts.  
2.) Two hardened washers shall be required for each set of oversized holes.

NORTH ABUTMENT TABLE	
Girder No.	"x" Dimension
1	5 1/2"
2	5 1/2"
3	5 1/2"
4	5 1/2"
5	5 1/2"
6	5 1/2"



TYPICAL INTERIOR CROSS FRAME - CF2 (CONNECTION "B")  
(15 - Required)

- Notes: 1.) See Sheet B9 for Cross Frame Connection "B" locations.  
2.) Detail 5/8"  $\phi$  holes for all 3/4"  $\phi$  bolts.  
3.) Two hardened washers shall be required for each set of oversized holes.  
4.) For existing to proposed connection, match existing bolt holes. The Fabrication Contractor shall provide connection details for all existing to proposed connections per the existing shop drawings.



STRUCTURAL STEEL  
STRUCTURE NO. 084-0028

DESIGNED	JML
CHECKED	MSW
DRAWN	DJM
CHECKED	MGO/MSW
DATE	12/16/08

SHEET NO. B12	F.A.I. RTE.	SECTION	COUNTY	TOTAL SHEETS	SHEET NO.
	55	(84-3HB-6)BR-F	SANGAMON	21	14
19 SHEETS	SN 084-0028		CONTRACT NO. 72C50		
FED. ROAD DIST. NO. 6 ILLINOIS FED. AID PROJECT					