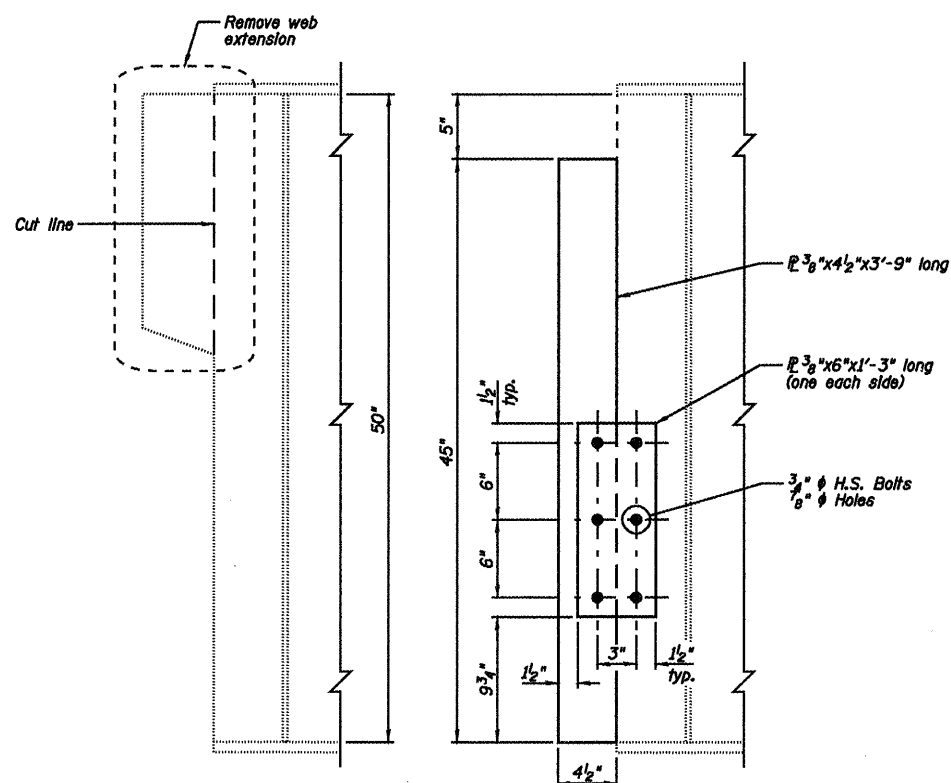
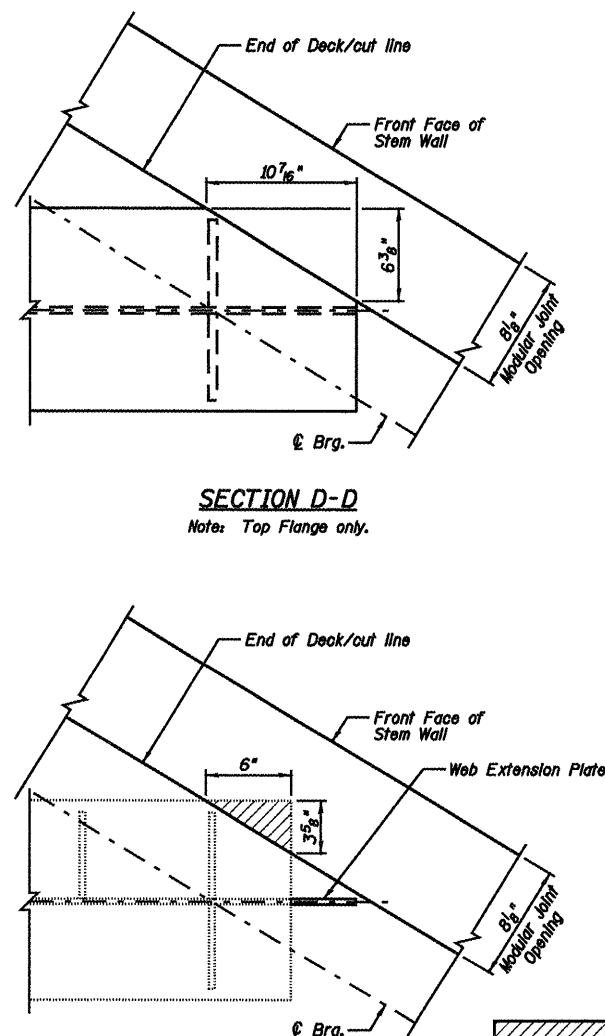


STATE OF ILLINOIS
DEPARTMENT OF TRANSPORTATION

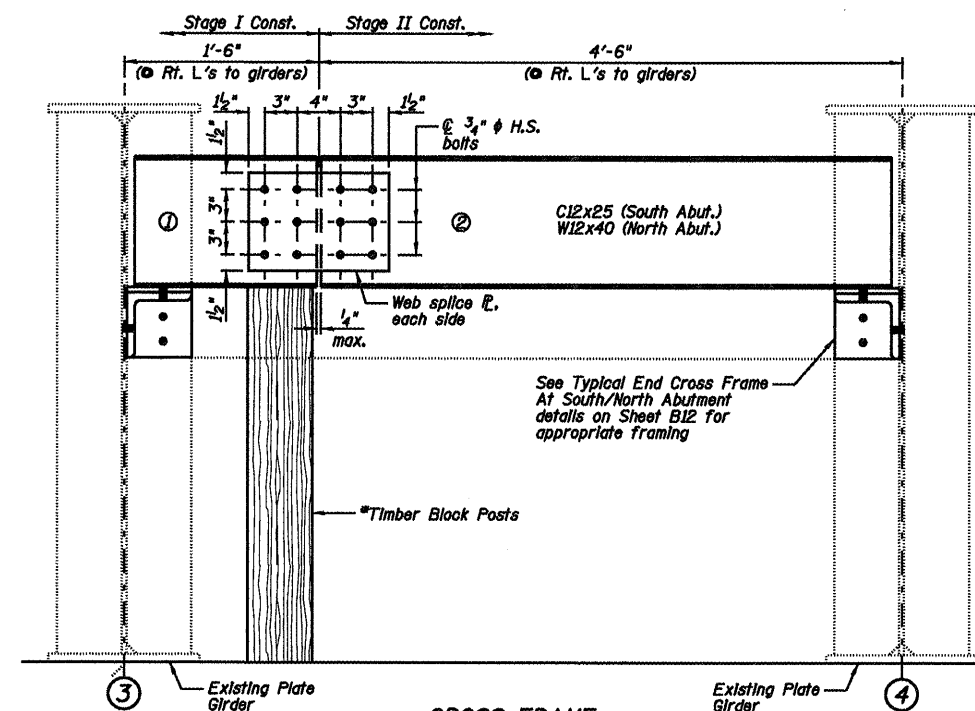


WEB EXTENSION PLATE DETAIL
(8 - Required)



SECTION D-D
Note: Top Flange only.

SECTION E-E
Note: Top Flange only.



CROSS FRAME

* Cost of Timber Block Posts are Included with Erecting Structural Steel.

CROSS FRAME STAGE CONSTRUCTION SEQUENCE

- 1.) Order Cross Frame in two sections.
- 2.) Attach Section ① of Cross Frame to Girder 3.
- 3.) Place Timber Block Posts between Section ① of Cross Frame and Abutment Bearing Section.
- 4.) Attach Section ② of Cross Frame to both Girder 4 and Section ① of Cross Frame during Stage II Construction with splice plates.
- 5.) Remove Timber Block Posts.
- 6.) Install lower portion of Cross Frame during Stage II Construction.

DESIGNED	JML
CHECKED	MSW
DRAWN	DJM
CHECKED	MGO/MSW

DATE 12/16/08

NOTES:

- 1.) See Sheet B10 for Web Extension Plate locations.
- 2.) See Sheet B10 for Sections D-D and E-E locations.

STRUCTURAL STEEL
STRUCTURE NO. 084-0028

SHEET NO. B13 19 SHEETS	F.A.I. RTE.	SECTION	COUNTY	TOTAL SHEETS	SHEET NO.
	55	(84-3HB-6)BR-F	SANGAMON	21	15
SN 084-0028			CONTRACT NO. 72C50		
FED. ROAD DIST. NO. 6 ILLINOIS FED. AID PROJECT					