

F.A.I. RTE.	SECTION	COUNTY	TOTAL SHEETS	SHEET NO.
57	15(22,23,24,25,26)RS-3	COLES	87	1
		ILLINOIS	CONTRACT NO. 74158	

*87+5=92

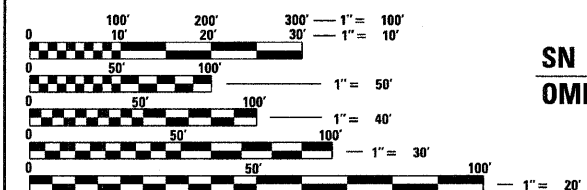
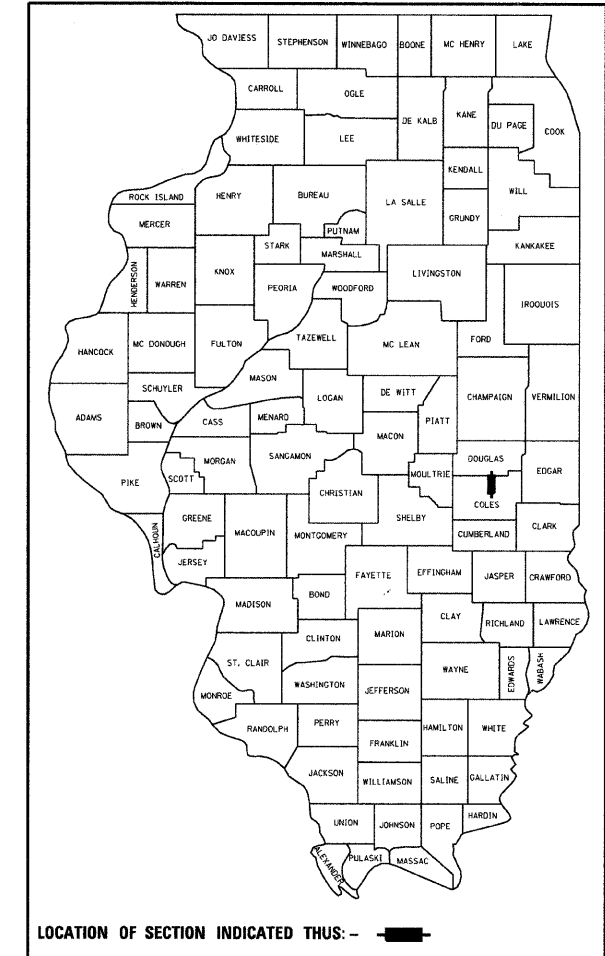
D-97-029-06

STATE OF ILLINOIS
DEPARTMENT OF TRANSPORTATION
DIVISION OF HIGHWAYS
**PROPOSED
HIGHWAY PLANS**

FAI ROUTE 57
SECTION 15(22,23,24,25,26)RS-3
PROJECT: *ESP-057-4(128)191*
INTERSTATE RESURFACING
COLES COUNTY
C-97-061-06

FOR INDEX OF SHEETS, SEE SHEET NO. 2

ADT = 20,000 (2008)

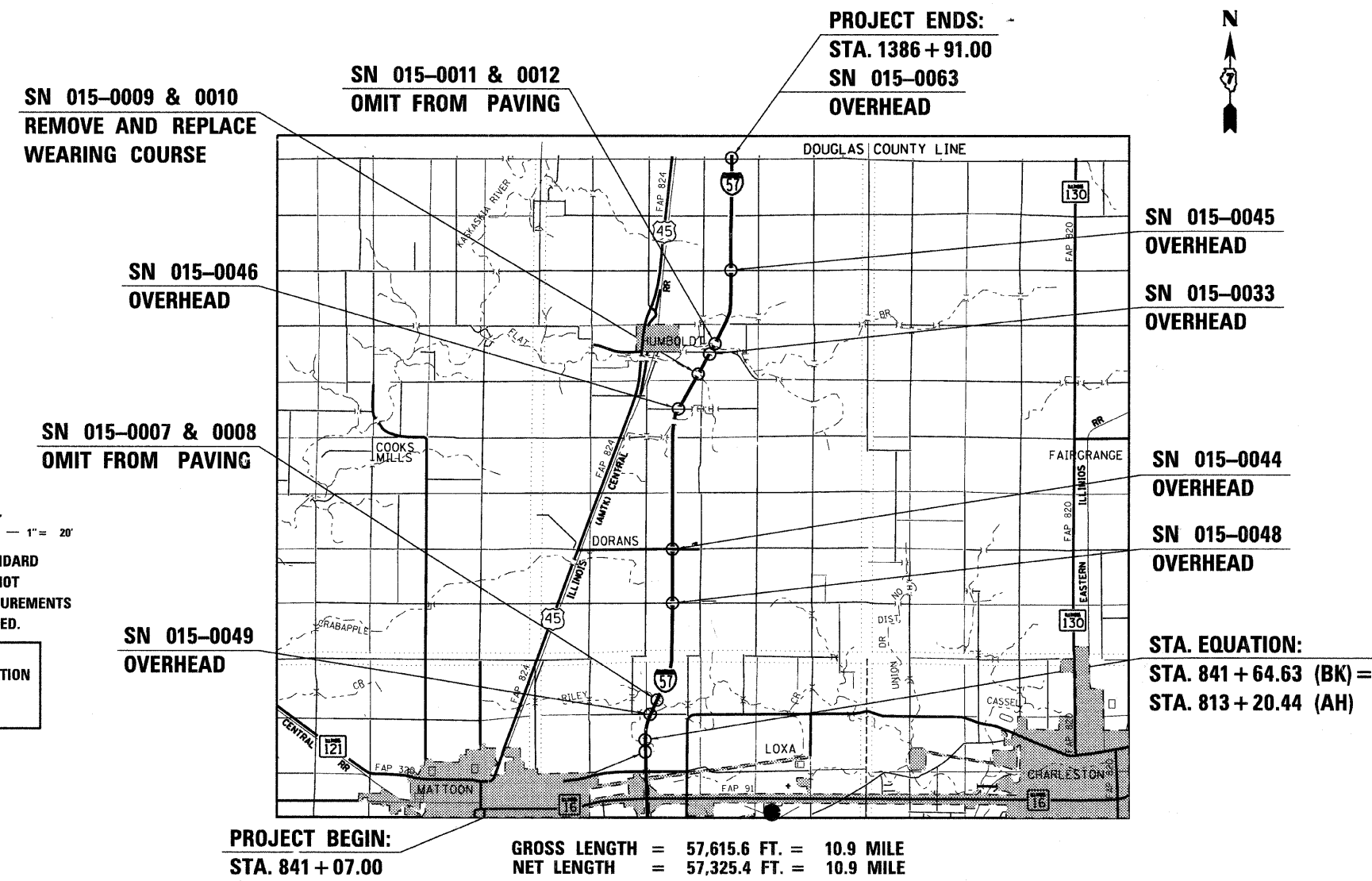


FULL SIZE PLANS HAVE BEEN PREPARED USING STANDARD ENGINEERING SCALES. REDUCED SIZED PLANS WILL NOT CONFORM TO STANDARD SCALES. IN MAKING MEASUREMENTS ON REDUCED PLANS, THE ABOVE SCALES MAY BE USED.

J.U.L.I.E.
JOINT UTILITY LOCATION INFORMATION FOR EXCAVATION
1-800-892-0123
OR 811

PROJECT ENGINEER: TOM RONAN
PROJECT MANAGER: JEFF DAVISON

CONTRACT NO. 74158



STATE OF ILLINOIS
DEPARTMENT OF TRANSPORTATION
DIVISION OF HIGHWAYS
SUBMITTED *February 6* 20 09
Ryan L. Durdella
DEPUTY DIRECTOR OF HIGHWAYS, REGION ENGINEER
March 13, 20 09
Charles G. Ingersoll
ENGINEER OF DESIGN AND ENVIRONMENT
March 13, 20 09
Christine M. Reed
DIRECTOR OF HIGHWAYS, CHIEF ENGINEER

**PRINTED BY THE AUTHORITY
OF THE STATE OF ILLINOIS**