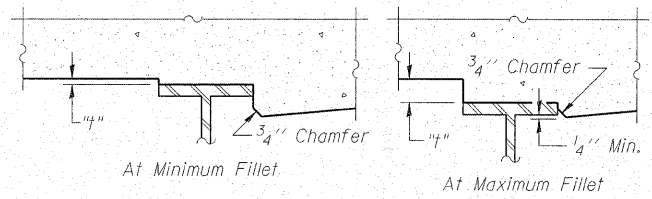
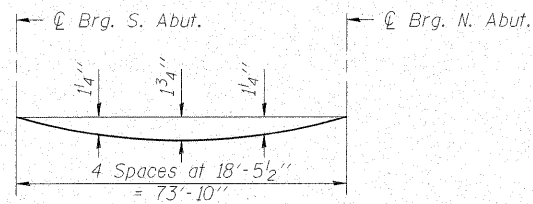


STATE OF ILLINOIS
DEPARTMENT OF TRANSPORTATION



ROUTE NO.	SECTION	COUNTY	TOTAL SHEETS	SHEET NO.	SHEET NO. 5
FAP 770 IL 128	(115BR) B-1	SHELBY	39	22	19 SHEETS
FED. ROAD DIST. NO.	ILLINOIS	FED. AID PROJECT-			

Contract # 74233



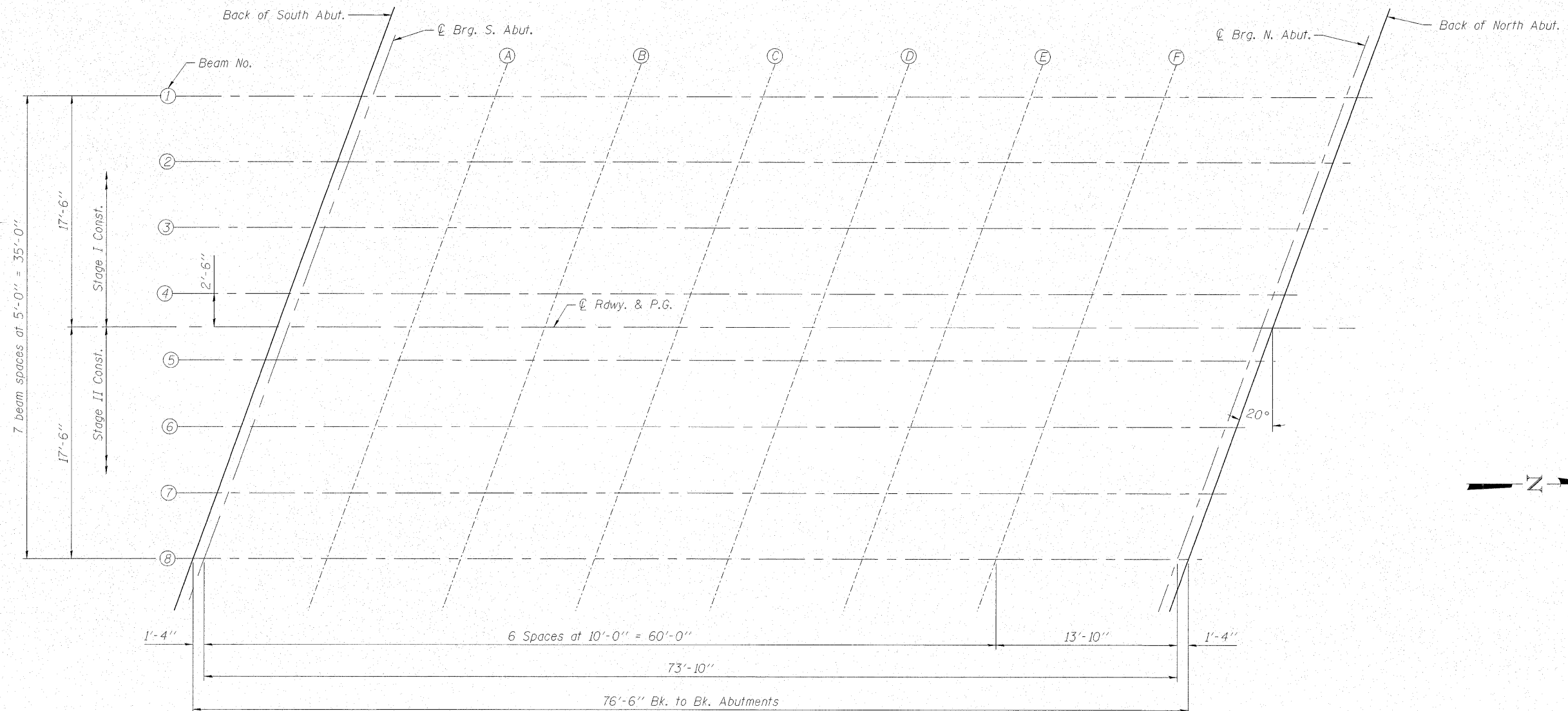
DEAD LOAD DEFLECTION DIAGRAM

(Includes weight of concrete only.)

Note:
The above deflections are not to be used in the field if the engineer is working from the grade elevations adjusted for dead load deflections as shown on sheet 6 of 19.

To determine "f": After all structural steel has been erected, elevations of the top flanges of the beams shall be taken at intervals shown below. These elevations subtracted from the "Theoretical Grade Elevations Adjusted for Dead Load Deflection" shown on sheet 6 of 19, minus slab thickness, equals the fillet heights "f" above top flange of beams.

FILLET HEIGHTS



PLAN



DESIGNED -	BAS
CHECKED -	KEF
DRAWN -	LAD
CHECKED -	RJA / KEF

TOP OF SLAB ELEVATIONS
IL ROUTE 128 OVER
ROBINSON CREEK TRIBUTARY
F.A.P. RTE. 770 - SECTION (115BR)B-1
SHELBY COUNTY
STATION 408+75.45
STRUCTURE NO. 087-0031