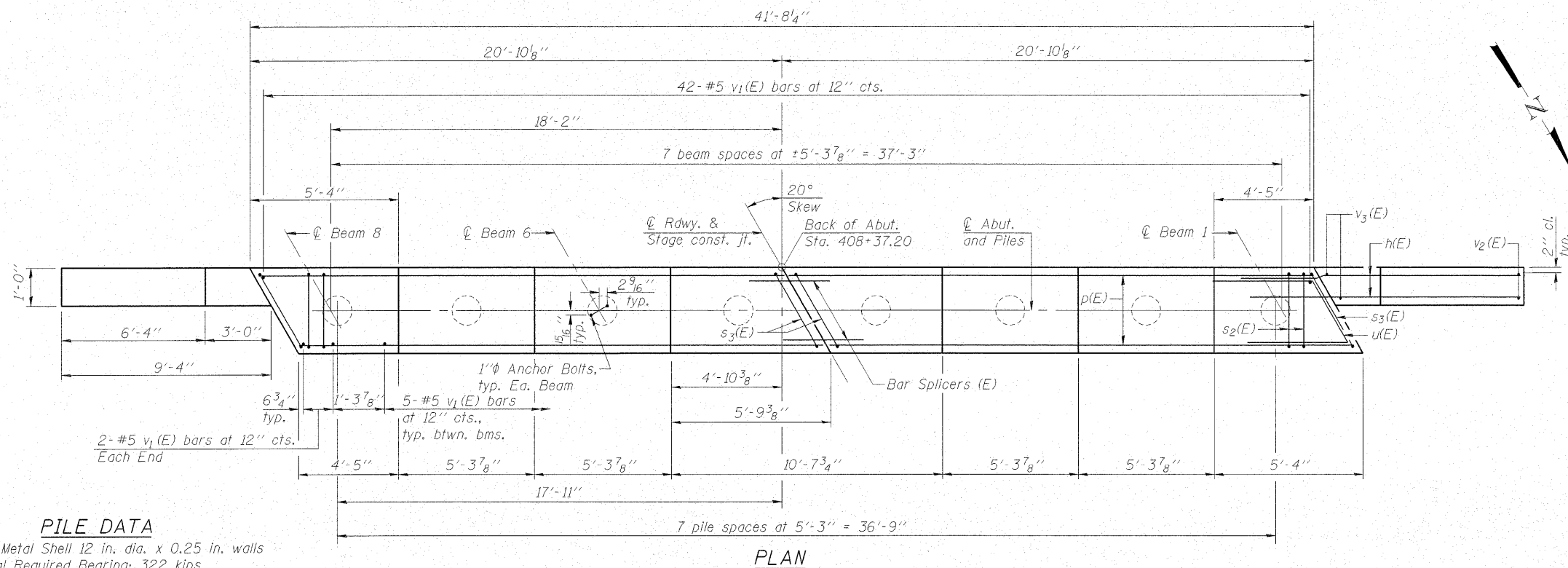
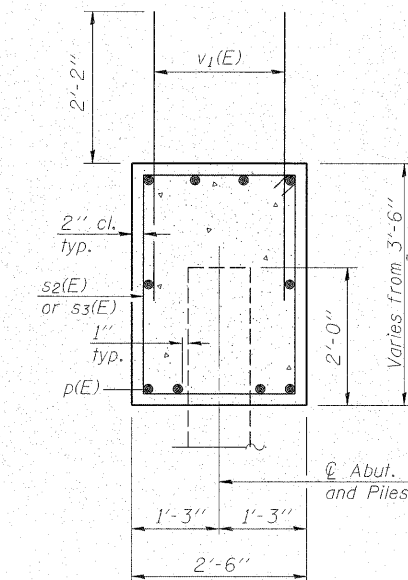
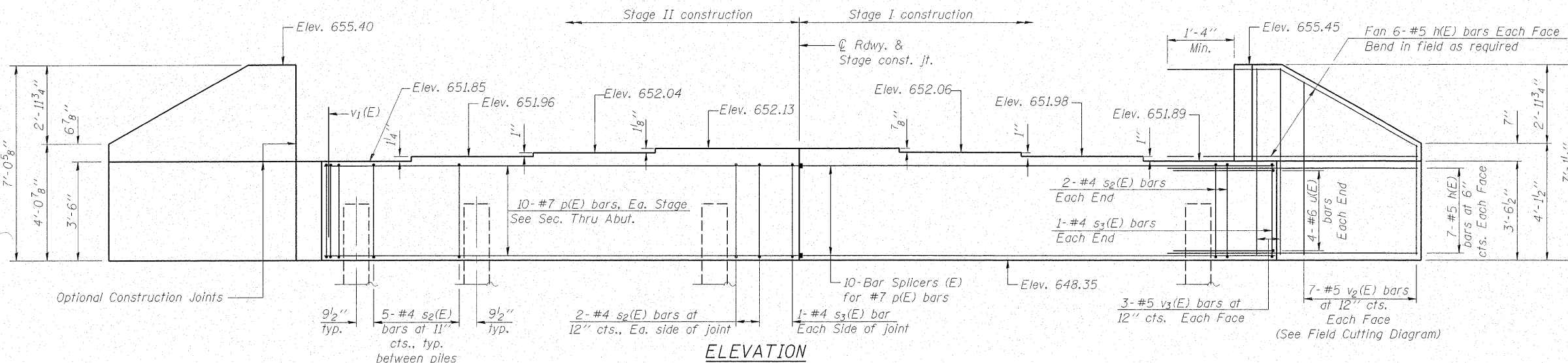


Notes: Pour steps monolithically with cap.
Space reinforcement to miss anchor bolts.

STATE OF ILLINOIS
DEPARTMENT OF TRANSPORTATION

ROUTE NO.	SECTION	COUNTY	TOTAL SHEETS	SHEET NO.	SHEET NO. 13
FAP 770 IL 128	(115BR) B-1	SHELBY	39	30	19 SHEETS
FED. ROAD DIST. NO.	ILLINOIS	FED. AID PROJECT-			

Contract # 74233

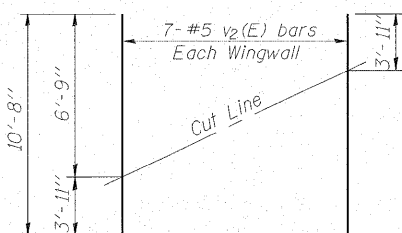


PILE DATA

Type: Metal Shell 12 in. dia. x 0.25 in. walls
Nominal Required Bearing: 322 kips
Factored Resistance Available: 161 kips
Est. Length: 63'
No. Production Piles: 7
No. Test Piles: 1

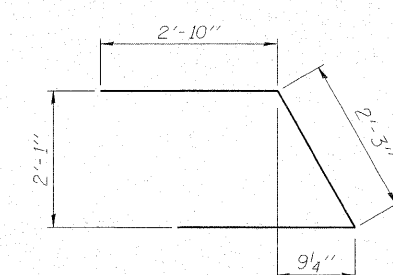
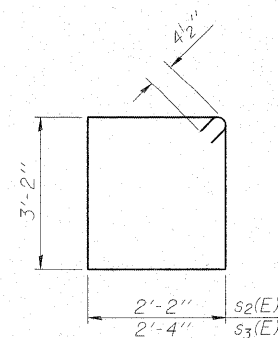


DESIGNED -	BAS
CHECKED -	KEF
DRAWN -	SGM
CHECKED -	RJA / KEF



FIELD CUTTING DIAGRAM

Order v₂(E) full length. Cut as shown and use remainder of bars in opposite face.



BILL OF MATERIAL

Bar	No.	Size	Length	Shape
h(E)	52	#5	11'-2"	—
p(E)	20	#7	20'-6"	—
s ₂ (E)	38	#4	11'-5"	□
s ₃ (E)	4	#4	11'-9"	□
u(E)	8	#6	7'-11"	∩
v ₁ (E)	81	#5	4'-4"	—
v ₂ (E)	14	#5	10'-8"	—
v ₃ (E)	12	#5	6'-9"	—
Structure Excavation		Cu. Yd.	72	
Concrete Structures		Cu. Yd.	17.8	
Reinforcement Bars, Epoxy Coated		Pound	2470	
Furnishing Metal Shell Piles, 12"x0.25"		Foot	441	
Driving Piles		Foot	441	
Test Pile, Metal Shells		Each	1	
Anchor Bolts, 1"		Each	16	

For details of Bar Splicers, see sheet 16 of 19.
For details of piles, see sheet 15 of 19.

SOUTH ABUTMENT
IL ROUTE 128 OVER
ROBINSON CREEK TRIBUTARY
F.A.P. RTE. 770 - SECTION (115BR)B-1
SHELBY COUNTY
STATION 408+75.45
STRUCTURE NO. 087-0031