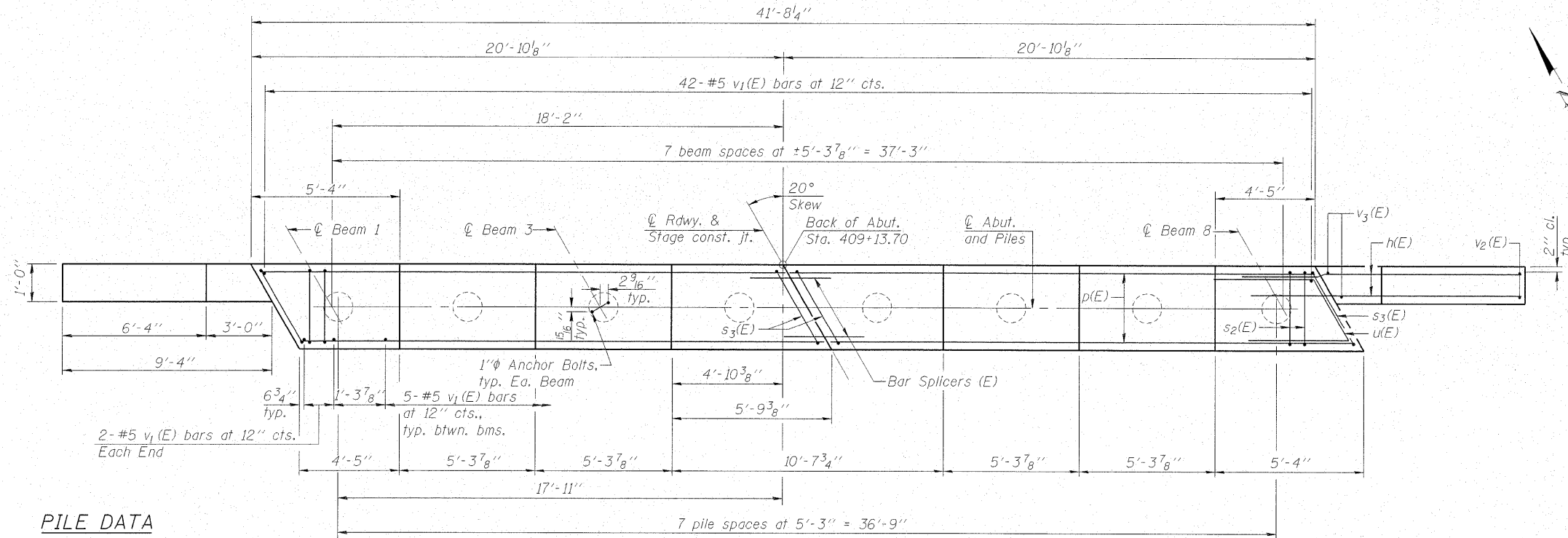
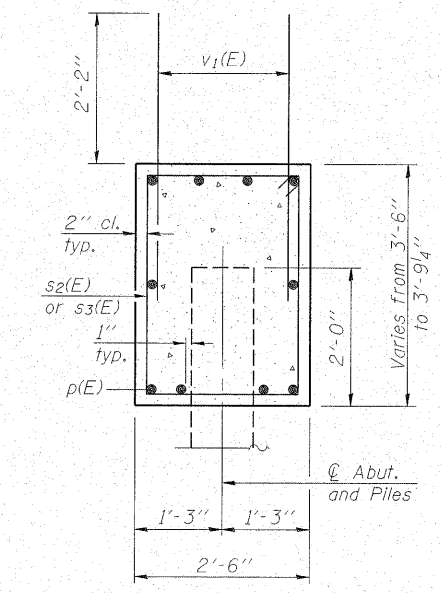
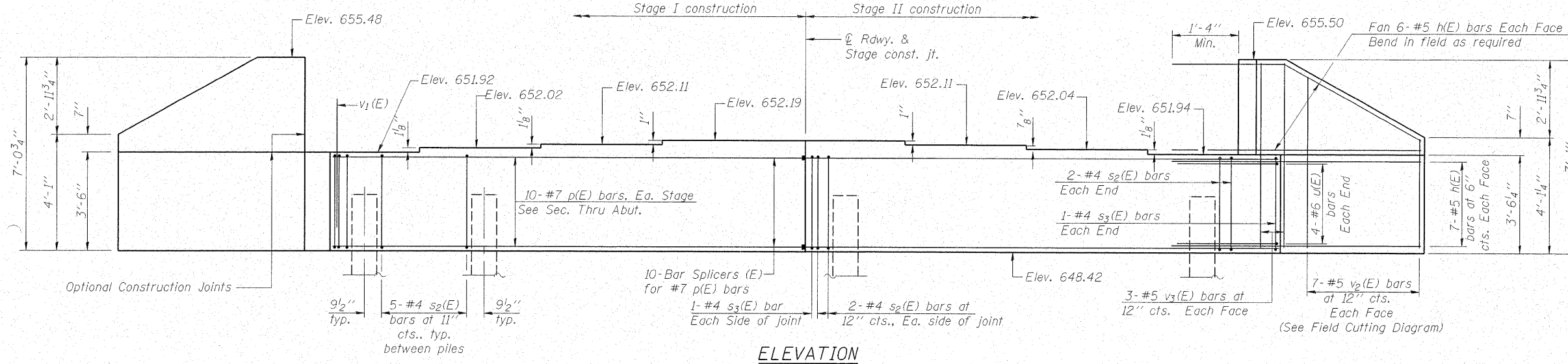


Notes: Four steps monolithically with cap.  
Space reinforcement to miss anchor bolts.

STATE OF ILLINOIS  
DEPARTMENT OF TRANSPORTATION

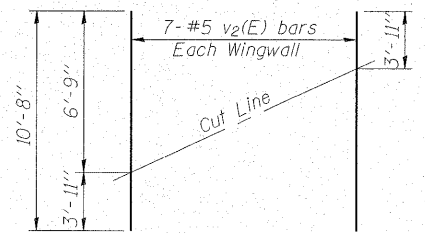
ROUTE NO.	SECTION	COUNTY	SHEET NO.	SHEET	SHEET NO. 14
FAP 770 IL 128	(115BR) B-1	SHELBY	39	31	19 SHEETS
FED. ROAD DIST. NO.	ILLINOIS	FED. AID PROJECT-			

Contract # 74233



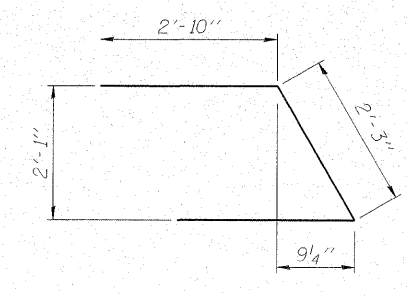
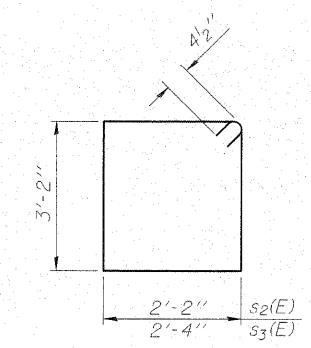
**PILE DATA**

Type: Metal Shell 12 in. dia. x 0.25 in. walls  
Nominal Required Bearing: 322 kips  
Factored Resistance Available: 161 kips  
Est. Length: 56'  
No. Production Piles: 7  
No. Test Piles: 1



**FIELD CUTTING DIAGRAM**

Order v<sub>2</sub>(E) full length. Cut as shown and use remainder of bars in opposite face.



**BILL OF MATERIAL**

Bar	No.	Size	Length	Shape
h(E)	52	#5	11'-2"	—
p(E)	20	#7	20'-6"	—
s <sub>2</sub> (E)	38	#4	11'-5"	□
s <sub>3</sub> (E)	4	#4	11'-9"	□
u(E)	8	#6	7'-11"	∇
v <sub>1</sub> (E)	81	#5	4'-4"	—
v <sub>2</sub> (E)	14	#5	10'-8"	—
v <sub>3</sub> (E)	12	#5	6'-9"	—
Structure Excavation			Cu. Yd.	71
Concrete Structures			Cu. Yd.	17.7
Reinforcement Bars, Epoxy Coated			Pound	2470
Furnishing Metal Shell Piles, 12"x0.25"			Foot	392
Driving Piles			Foot	392
Test Pile, Metal Shells			Each	1
Anchor Bolts, 1"			Each	16

For details of Bar Splicers, see sheet 16 of 19.  
For details of piles, see sheet 15 of 19.

**NORTH ABUTMENT**  
IL ROUTE 128 OVER  
ROBINSON CREEK TRIBUTARY  
F.A.P. RTE. 770 - SECTION (115BR)B-1  
SHELBY COUNTY  
STATION 408+75.45  
STRUCTURE NO. 087-0031

**MAURER & STUTZ, INC.**  
ENGINEERS SURVEYORS

DESIGNED - BAS  
CHECKED - KEF  
DRAWN - SGM  
CHECKED - RJA / KEF