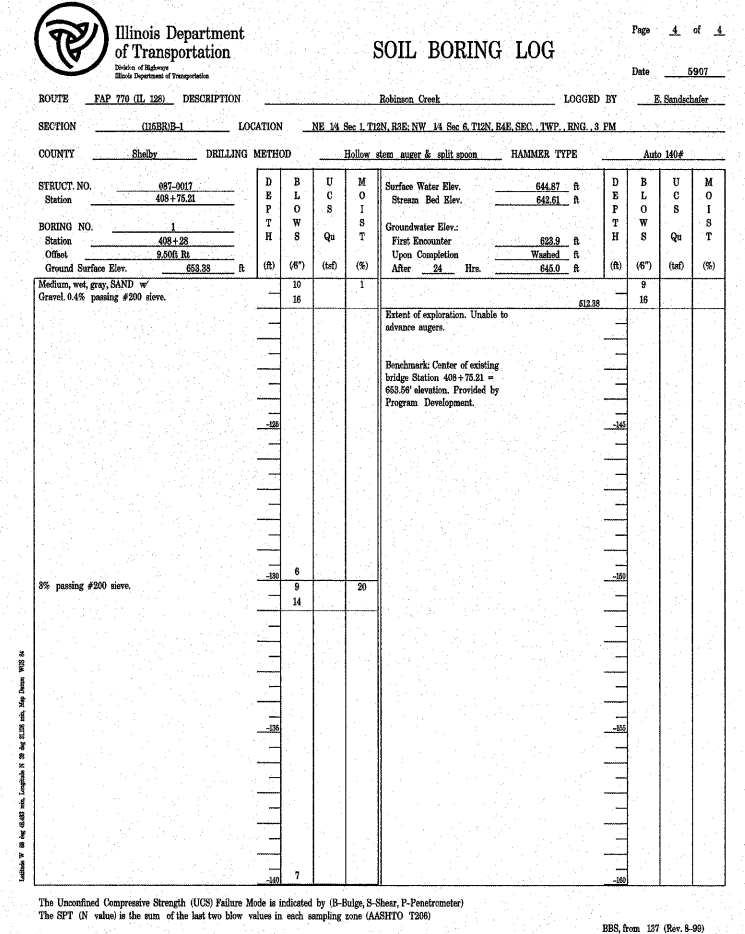
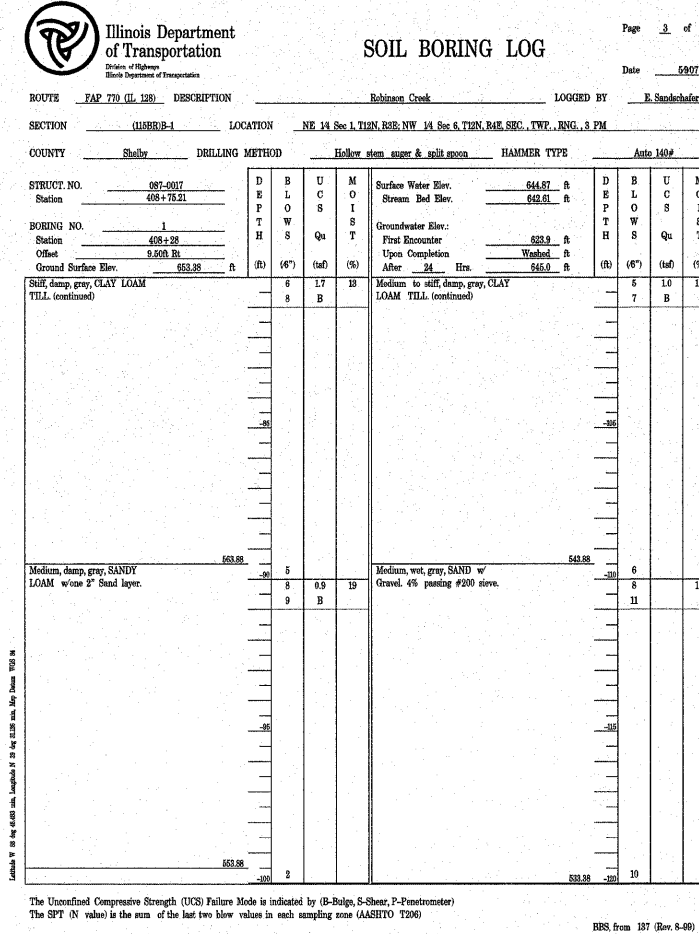
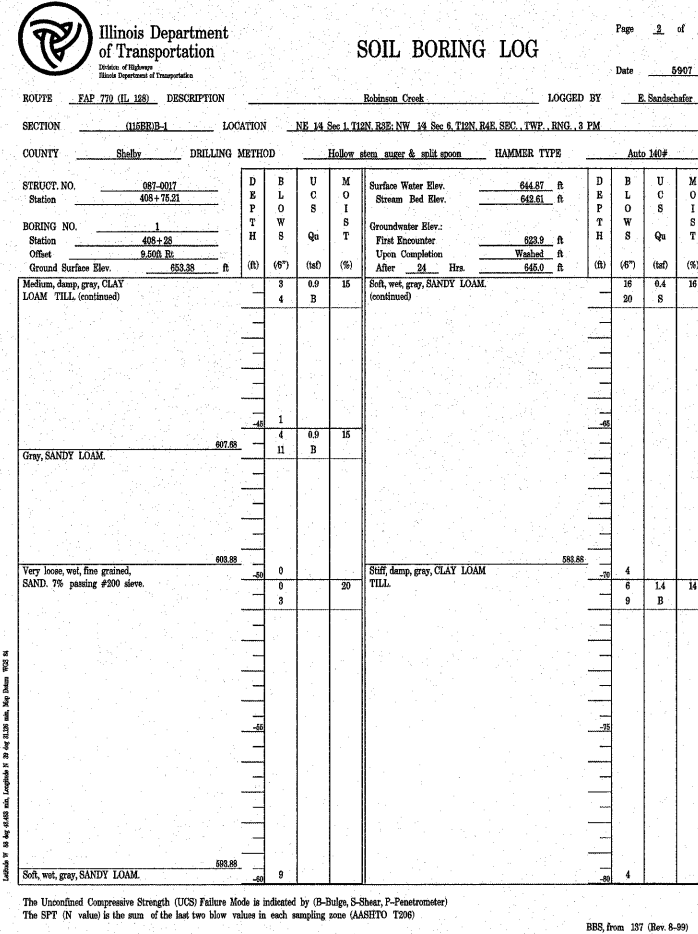
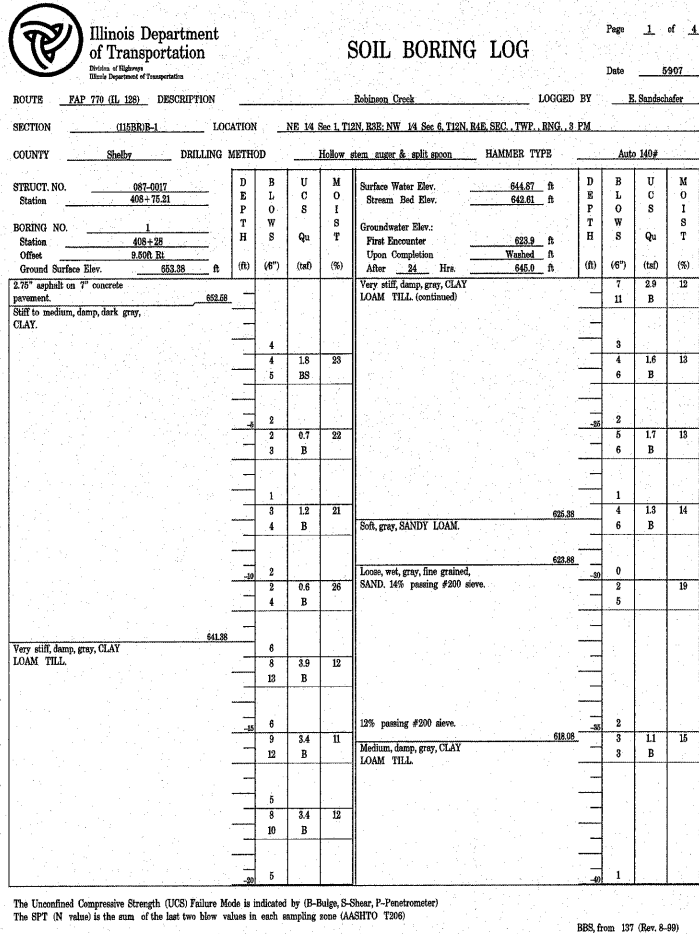


STATE OF ILLINOIS
DEPARTMENT OF TRANSPORTATION

ROUTE NO.	SECTION	COUNTY	TOTAL SHEETS	SHEET NO.
FAP 770 (I15BR)	IL 128 B-1	SHELBY	39	34
FED. ROAD DIST. NO.	ILLINOIS	FED. AID PROJECT		

Contract # 74233



DESIGNED - BAS
CHECKED - KEF
DRAWN - SEM
CHECKED - RJA / KEF

SOIL BORINGS
IL ROUTE 128 OVER
ROBINSON CREEK TRIBUTARY
F.A.P. RTE. 770 - SECTION (I15BR)B-1
SHELBY COUNTY
STATION 408+75.45
STRUCTURE NO. 087-0031