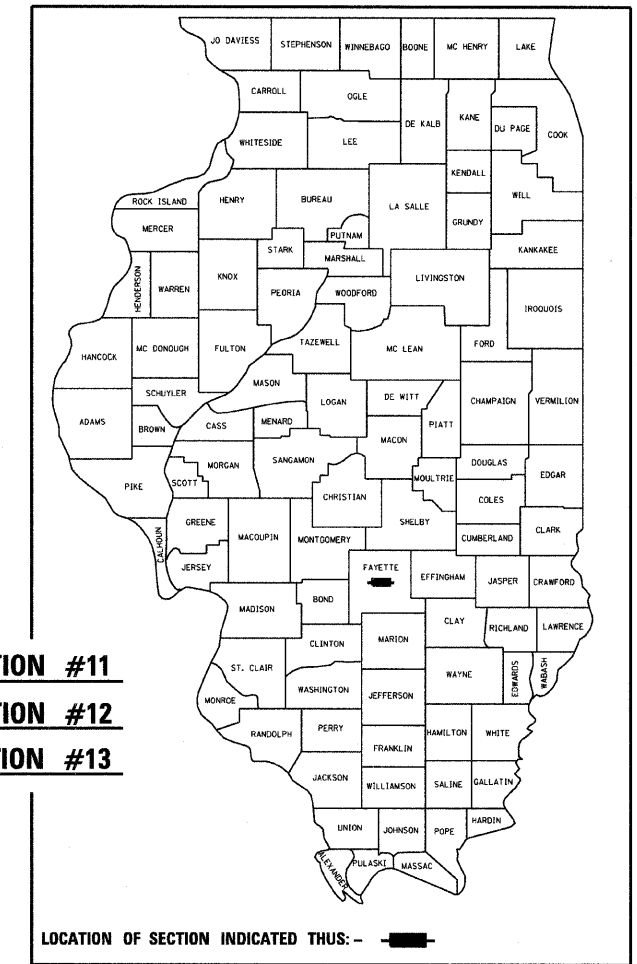


**STATE OF ILLINOIS**  
**DEPARTMENT OF TRANSPORTATION**  
**DIVISION OF HIGHWAYS**  
**PROPOSED**  
**HIGHWAY PLANS**

F.A.I. RTE.	SECTION	COUNTY	TOTAL SHEETS	SHEET NO.
70	D-7 SAFETY 2009-1	FAYETTE	100	1
FED. ROAD DIST. NO.	ILLINOIS	CONTRACT NO. 74313		

D-97-029-08

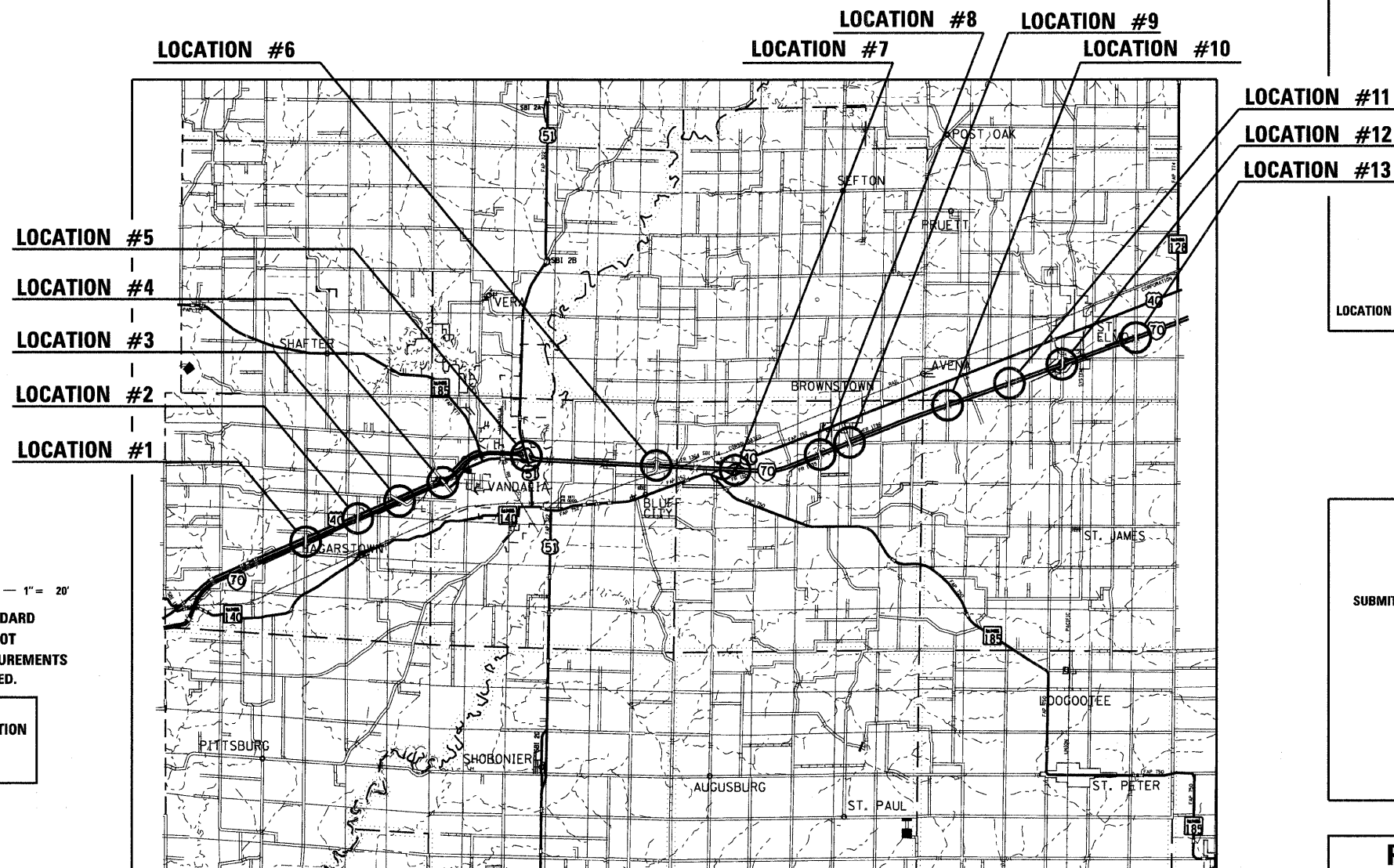


FOR INDEX OF SHEETS, SEE SHEET NO. 2

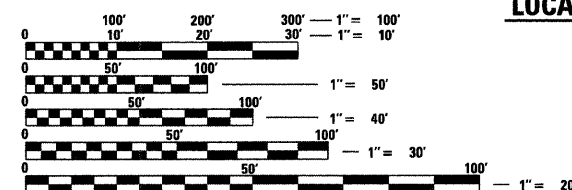
**LOCATIONS - STRUCTURES**

LOC. #1	026-0074
LOC. #2	026-0073
LOC. #3	026-0077
LOC. #4	026-0087
LOC. #5	026-0032
LOC. #6	026-0075
LOC. #7	026-0049
LOC. #8	026-0076
LOC. #9	026-0054
LOC. #10	026-0078
LOC. #11	026-0079
LOC. #12	026-0055
LOC. #13	026-0080

**FAI ROUTE 70 (I 70)**  
**SECTION D-7 SAFETY 2009-1**  
**PROJECT: HSIP-070-2(232)061**  
**FAYETTE COUNTY**  
**C-97-073-08**



ADT = 20,000 (2008)



FULL SIZE PLANS HAVE BEEN PREPARED USING STANDARD ENGINEERING SCALES. REDUCED SIZED PLANS WILL NOT CONFORM TO STANDARD SCALES. IN MAKING MEASUREMENTS ON REDUCED PLANS, THE ABOVE SCALES MAY BE USED.

J.U.L.I.E.  
 JOINT UTILITY LOCATION INFORMATION FOR EXCAVATION  
 1-800-892-0123  
 OR 811

PROJECT ENGINEER: TOM RONAN  
 PROJECT MANAGER: JEFF DAVISON

CONTRACT NO. 74313

STATE OF ILLINOIS  
 DEPARTMENT OF TRANSPORTATION  
 DIVISION OF HIGHWAYS

SUBMITTED January 20 20 09  
Roger L. Shisell  
 DEPUTY DIRECTOR OF HIGHWAYS, REGION ENGINEER

March 27 20 09  
Charles G. Ingersoll  
 ENGINEER OF DESIGN AND ENVIRONMENT

March 27 20 09  
Christine M. Reed  
 DIRECTOR OF HIGHWAYS, CHIEF ENGINEER

**PRINTED BY THE AUTHORITY**  
**OF THE STATE OF ILLINOIS**