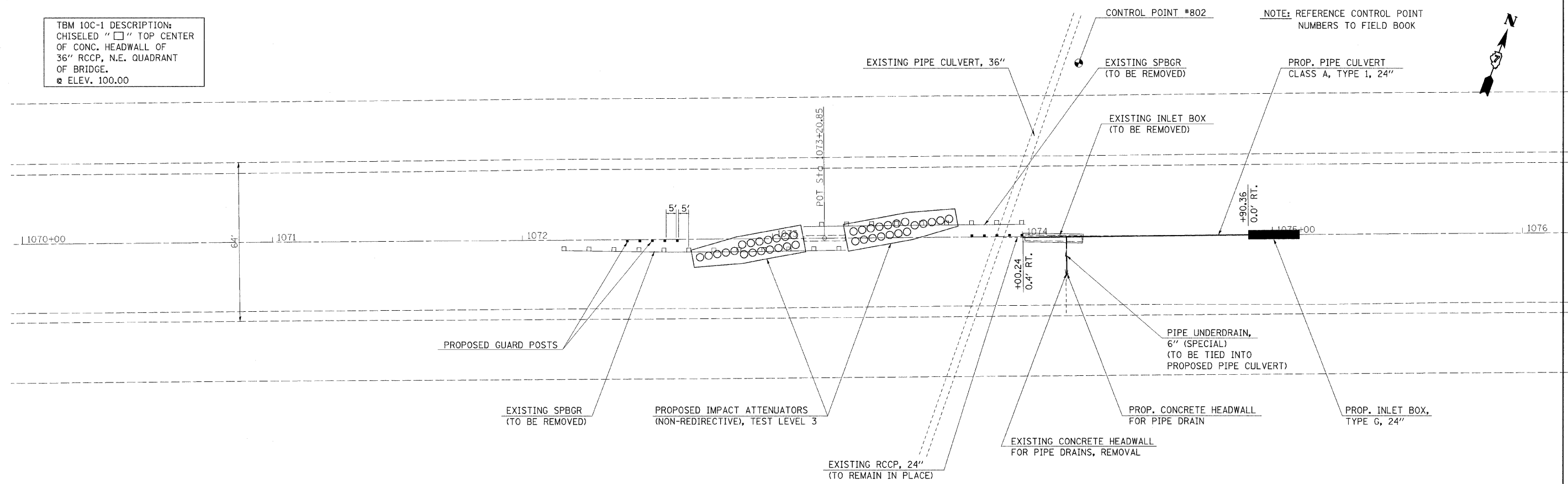


TBM 10C-1 DESCRIPTION:  
 CHISELED "□" TOP CENTER  
 OF CONC. HEADWALL OF  
 36" RCCP, N.E. QUADRANT  
 OF BRIDGE.  
 □ ELEV. 100.00

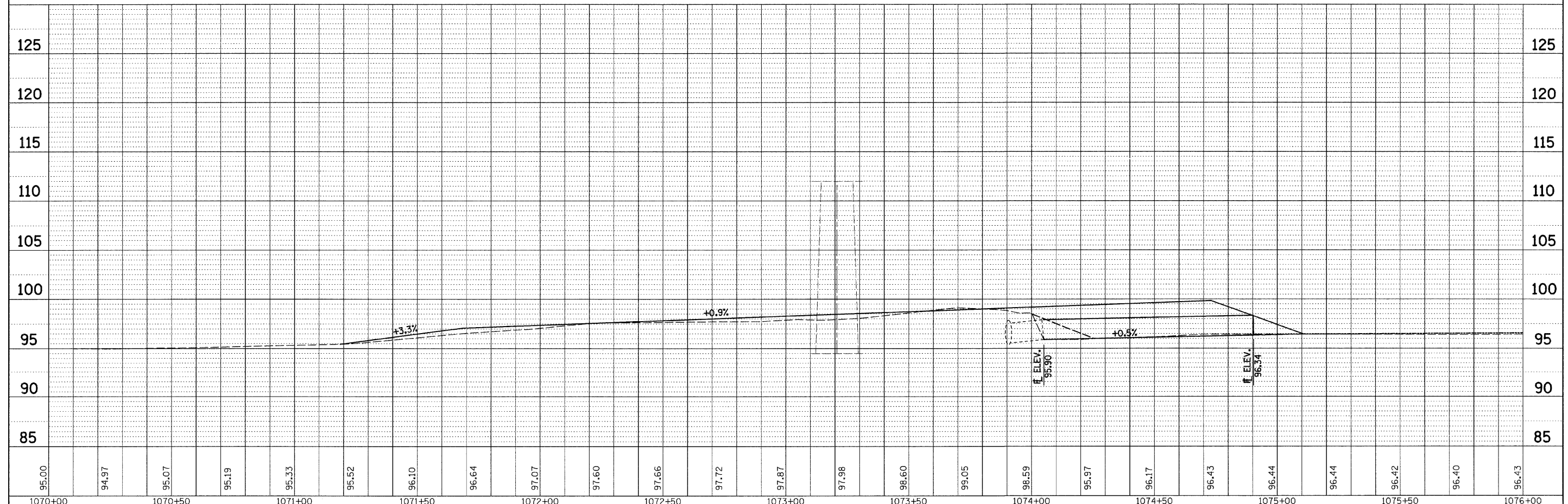
NOTE: REFERENCE CONTROL POINT  
 NUMBERS TO FIELD BOOK



PLAN	DATE
BY	
REVISIONS	
NO.	
DESCRIPTION	
DATE	
BY	
DATE	
BY	
DATE	



PROFILE	DATE
BY	
REVISIONS	
NO.	
DESCRIPTION	
DATE	
BY	
DATE	
BY	
DATE	



FILE NAME =	USER NAME = swartzm	DESIGNED -	REVISED -	<b>STATE OF ILLINOIS DEPARTMENT OF TRANSPORTATION</b>	<b>PLAN PROFILE 026-0079</b>			F.A.I. RTE.	SECTION	COUNTY	TOTAL SHEETS	SHEET NO.
20_74313.dgn		DRAWN -	REVISED -		70	D-7 SAFETY 2009-1	FAYETTE	100	27	CONTRACT NO. 74313		
PLOT SCALE = 20,000' / IN.		CHECKED -	REVISED -		SCALE: 20			SHEET NO. 13 OF 15 SHEETS			STA. 1070+00 TO STA. 1076+00	
PLOT DATE = 1/20/2009		DATE -	REVISED -		FED. ROAD DIST. NO. ILLINOIS FED. AID PROJECT							