

STATE OF ILLINOIS
DEPARTMENT OF TRANSPORTATION
DIVISION OF HIGHWAYS

PROPOSED
HIGHWAY PLANS

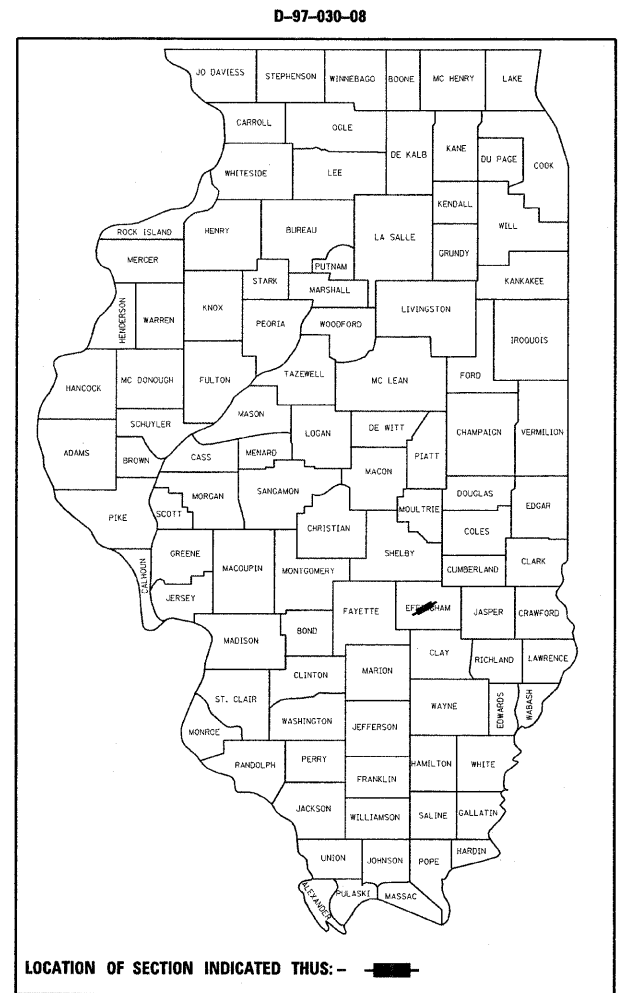
FAI ROUTE 70
SECTION D-7 SAFETY 2009-2
PROJECT: HSIP-070-3(116)095
EFFINGHAM COUNTY

C-97-074-08

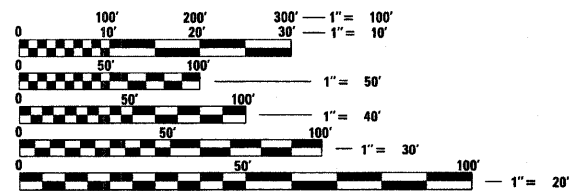
F.A.I. RTE.	SECTION	COUNTY	TOTAL SHEETS	SHEET NO.
70	D-7 Safety 2009-2	Effingham	85	1
		ILLINOIS	CONTRACT NO. 74314	

FOR INDEX OF SHEETS, SEE SHEET NO.

Location	Structure No.	Station	Location/Description
	1	025-0054	1300+02.98 EFFINGHAM/FAYETTE COUNTY LINE
	2	025-0057	1620+64.00 1.6 MI E ALTAMONT INTERCHANGE
	3	025-0058	1741+11.05 3.9 MI E ALTAMONT INTERCHANGE
	4	025-0059	1827+88.42 5.5 MI E ALTAMONT INTERCHANGE
	5	025-0045	19449+39.00 7.7 MI E ALTAMONT INTERCHANGE
	6	025-0062	2405+72.32 2.1 MI E US 45 INTERCHANGE
	7	025-0064	2486+36.23 3.6 MI E US 45 INTERCHANGE
	8	025-0051	2552+49.97 5.0 MI E US 45 INTERCHANGE
	9	025-0052	2633+55.55 6.5 MI E US 45 INTERCHANGE
	10	025-0055	1419+26.78 1 MI W OF ALTAMONT INTERCHANGE



CURRENT ADT
 FAI 70 (I-70) = 20700 (2009)

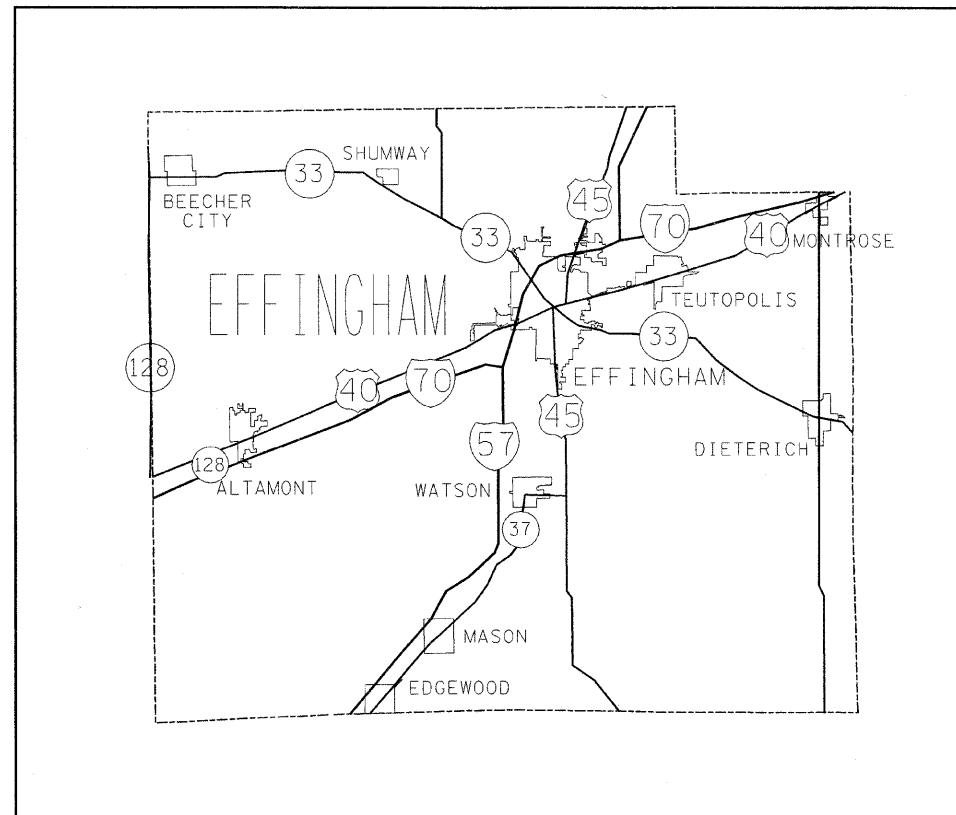


FULL SIZE PLANS HAVE BEEN PREPARED USING STANDARD ENGINEERING SCALES. REDUCED SIZED PLANS WILL NOT CONFORM TO STANDARD SCALES. IN MAKING MEASUREMENTS ON REDUCED PLANS, THE ABOVE SCALES MAY BE USED.

J.U.L.I.E.
 JOINT UTILITY LOCATION INFORMATION FOR EXCAVATION
 1-800-892-0123
 OR 811

PROJECT ENGINEER: MARK DAUGHERTY
 PROJECT MANAGER: JOYCE HEMMEN

CONTRACT NO. 74314



LOCATION MAP



STATE OF ILLINOIS
 DEPARTMENT OF TRANSPORTATION
 DIVISION OF HIGHWAYS

SUBMITTED January 30, 2009

Ronald J. Ansell
 DEPUTY DIRECTOR OF HIGHWAYS, REGION ENGINEER

March 27, 2009
Charles G. Ingersoll
 ENGINEER OF DESIGN AND ENVIRONMENT

March 27, 2009
Christine M. Reed
 DIRECTOR OF HIGHWAYS, CHIEF ENGINEER

**PRINTED BY THE AUTHORITY
 OF THE STATE OF ILLINOIS**