

STATE OF ILLINOIS
DEPARTMENT OF TRANSPORTATION

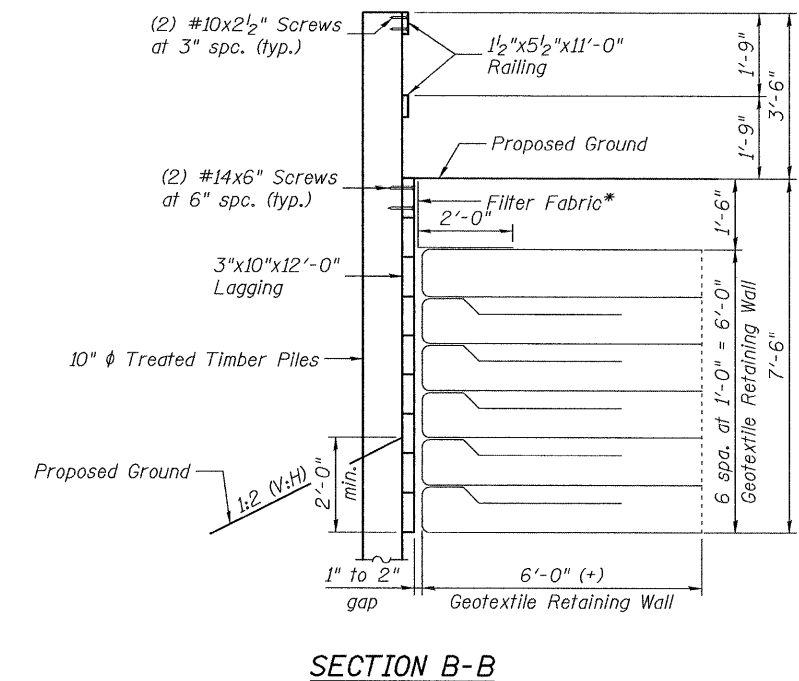
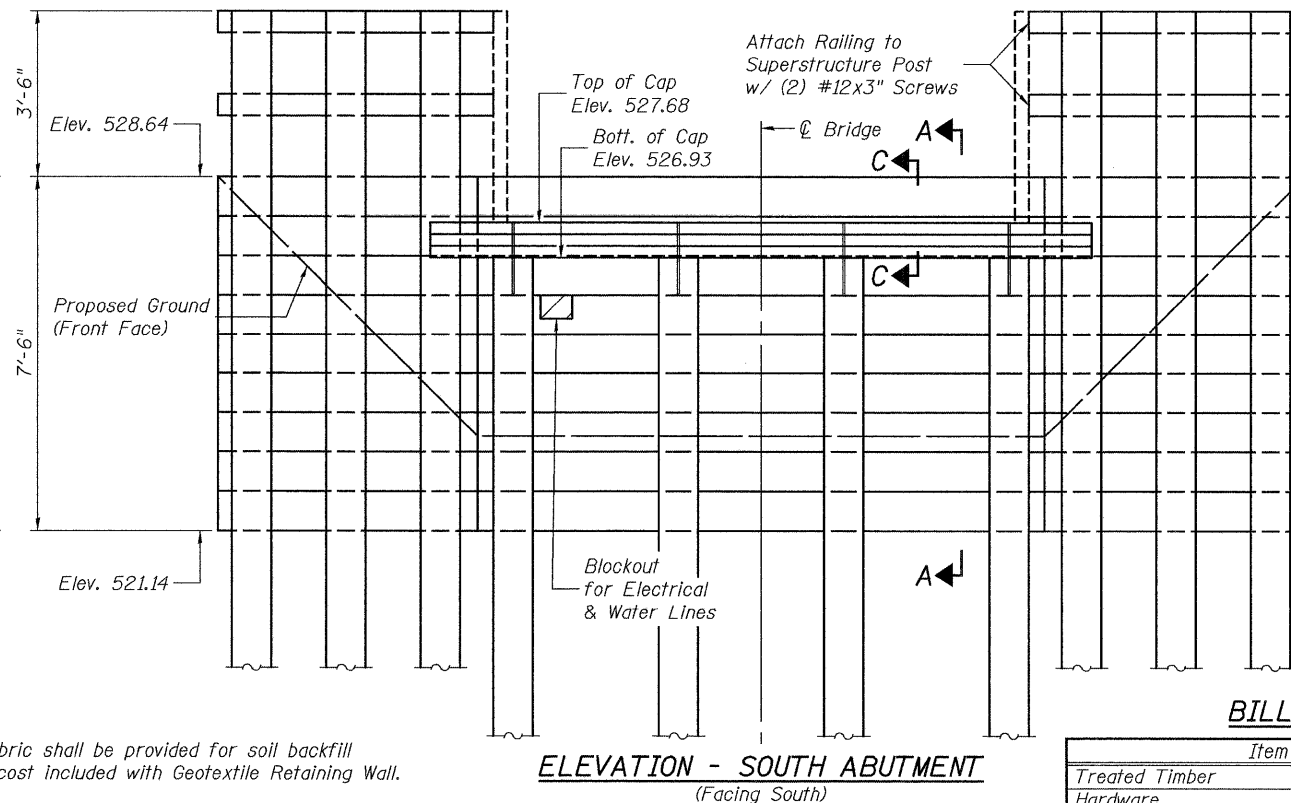
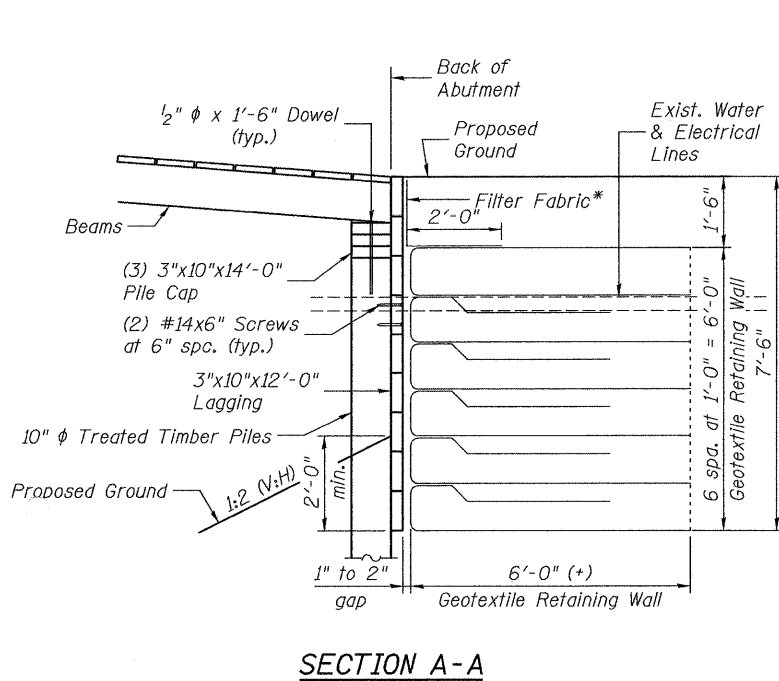
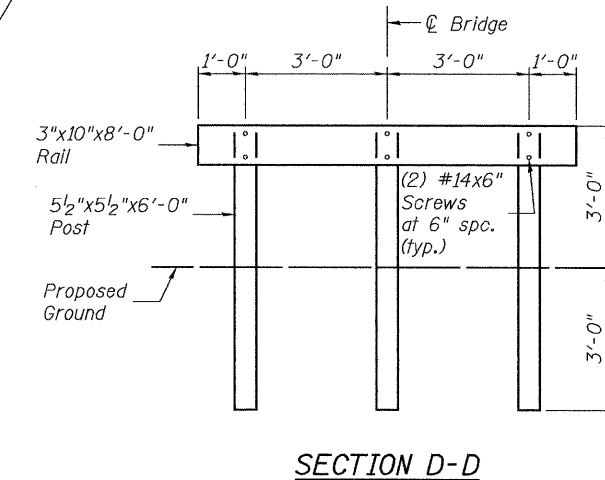
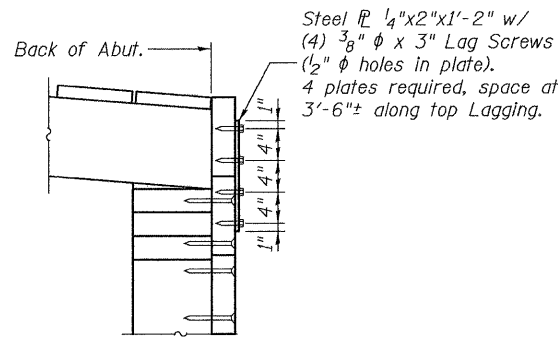
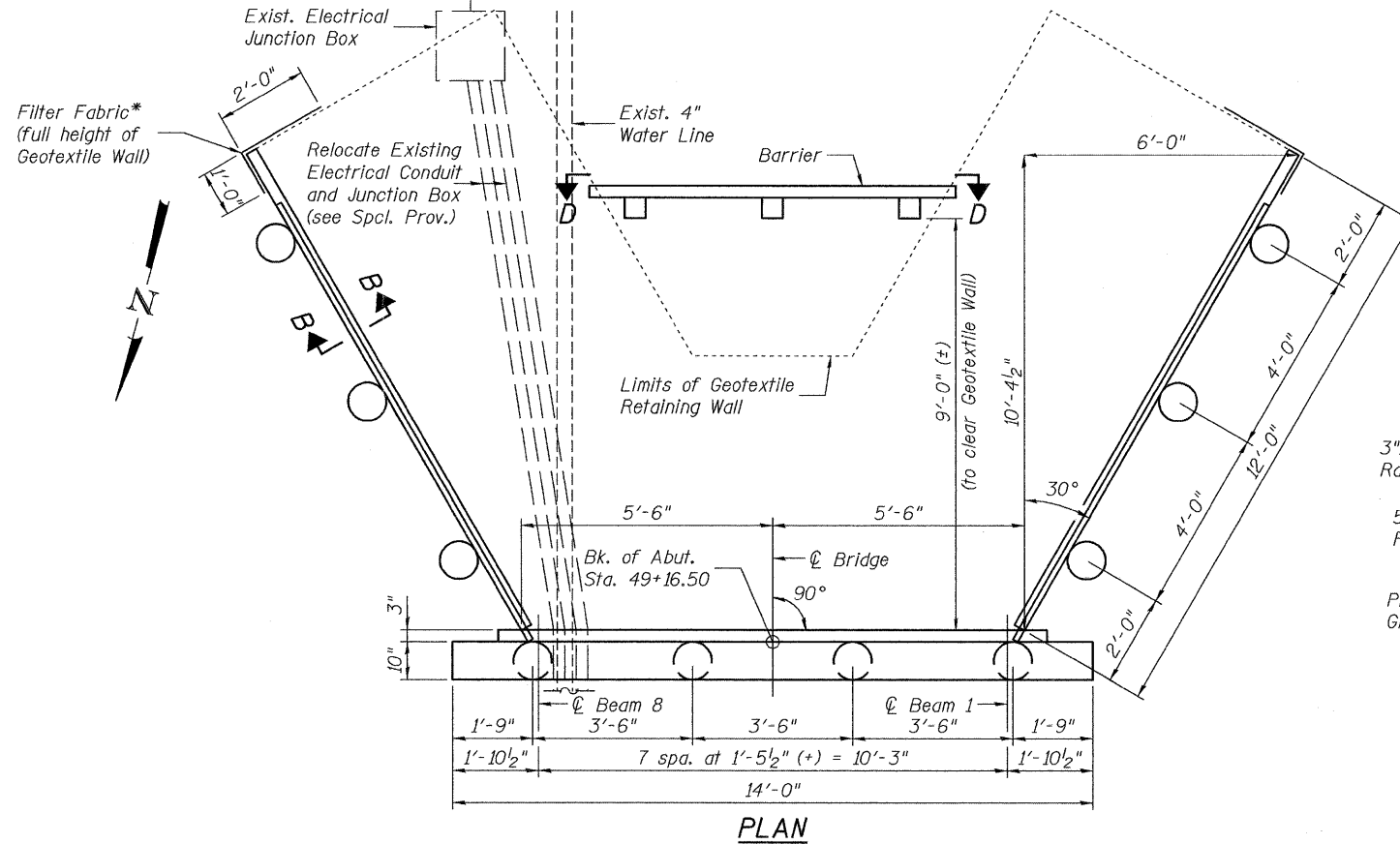
PILE DATA (PILE BENT)

Type: Timber - 10" dia. Treated, with Pile Shoes
Nominal Required Bearing: 106 kips
Factored Resistance Available: 53 kips
Est. Length: 25'
No. Production Piles: 3
No. Test Piles: 1

PILE DATA (WINGWALLS)

Type: Timber - 10" dia. Treated, with Pile Shoes
Nominal Required Bearing: NA
Factored Resistance Available: NA
Min. Pile Tip Elevation: 506.1 (see Note **)
Est. Length: 26'
No. Production Piles: 6
No. Test Piles: None

** Wingwall piles shall be driven to the Min. Tip Elevation shown. However if the piles reach the shale/rock layer above this elevation, then pile driving may stop when a Nominal Bearing of 106 kips is obtained.



BILL OF MATERIAL

Item	Unit	Total
Treated Timber	F.B.M.	1014
Hardware	Pound	30
Furnishing Treated Piles 20.1 to 38 Feet	Foot	231
Driving Piles	Foot	231
Test Pile Timber	Each	1
Pile Shoes	Each	10
Geotextile Retaining Wall	Sq Ft	210
Structure Excavation	Cu Yd	86

* Filter Fabric shall be provided for soil backfill as shown, cost included with Geotextile Retaining Wall.

For Geotextile Retaining Wall construction details, see sheet 6 of 12.

Johnson, Depp & Quisenberry
CONSULTING ENGINEERS
Springfield, Illinois

DESIGNED: JDQ	DRAWN: SJS/PTR
CHECKED: DCD	CHECKED: DCD

SOUTH ABUTMENT
THOMPSON MILL COVERED BRIDGE OVER
KASKASKIA RIVER
STRUCTURE NO. 087-0019

SHEET 4 OF 12	T.R. RTE.	SECTION	COUNTY	TOTAL SHEETS	SHEET NO.
	389A	D-T Bridge Appr. 2009-1	SHELBY	14	6
STA. 50+00			CONTRACT NO. 74337		
FED. ROAD DIST. NO. ILLINOIS FED. AID PROJECT					

FILE: J:\DQ\101611\1-D7V4\4 Thompson Mill Covered Bridge\1-ThompsonMill\04abut.dgn USER: DCD DATE: 02/04/2009 16:38:45