

F.A.P. RTE.	SECTION	COUNTY	TOTAL SHEETS	SHEET NO.
828	D7 BEAM REPAIR 2009-1	Cumberland	6	1
ILLINOIS CONTRACT NO. 74384				

STATE OF ILLINOIS  
DEPARTMENT OF TRANSPORTATION  
DIVISION OF HIGHWAYS

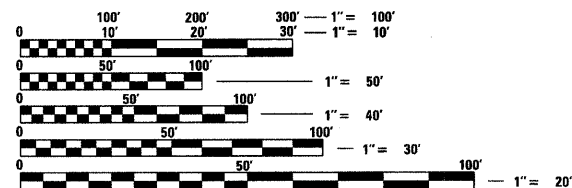
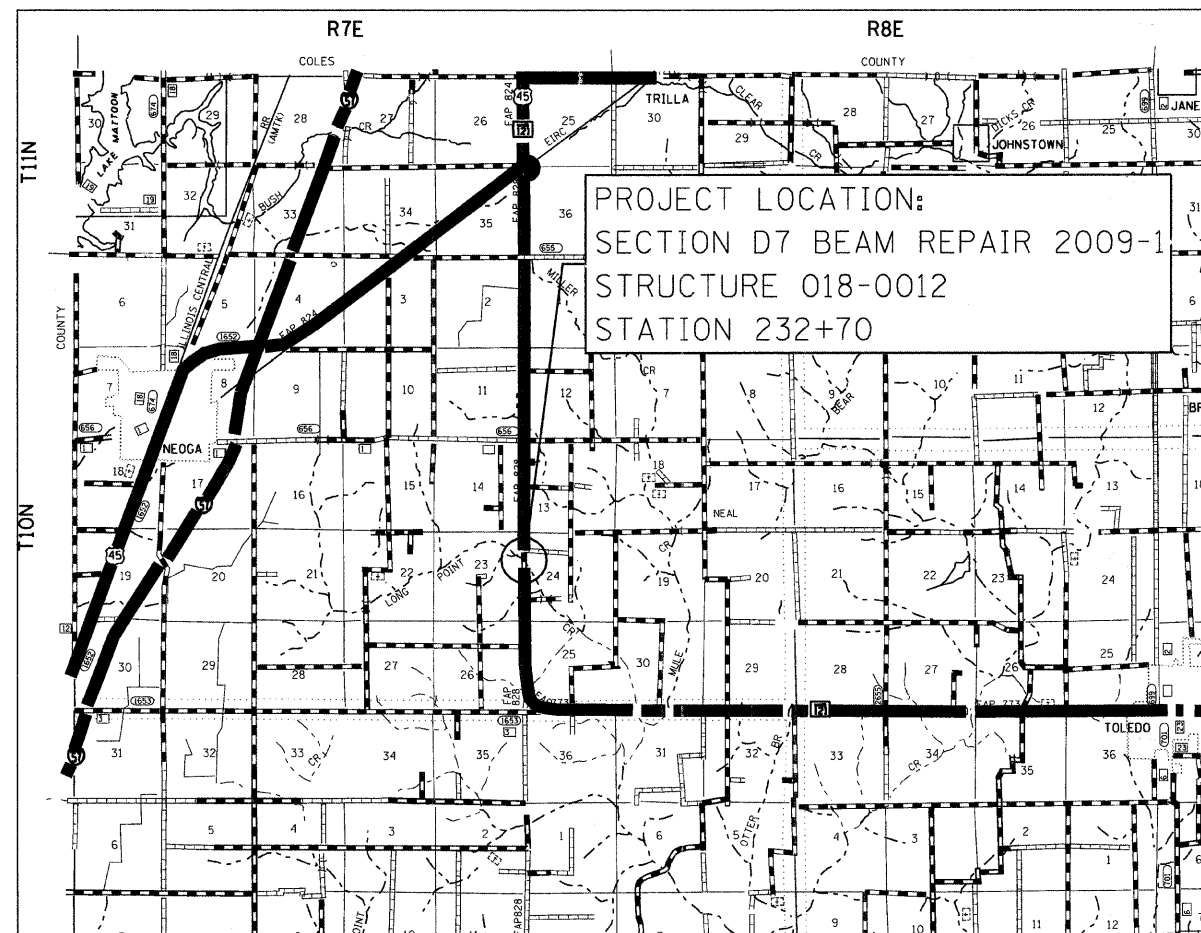
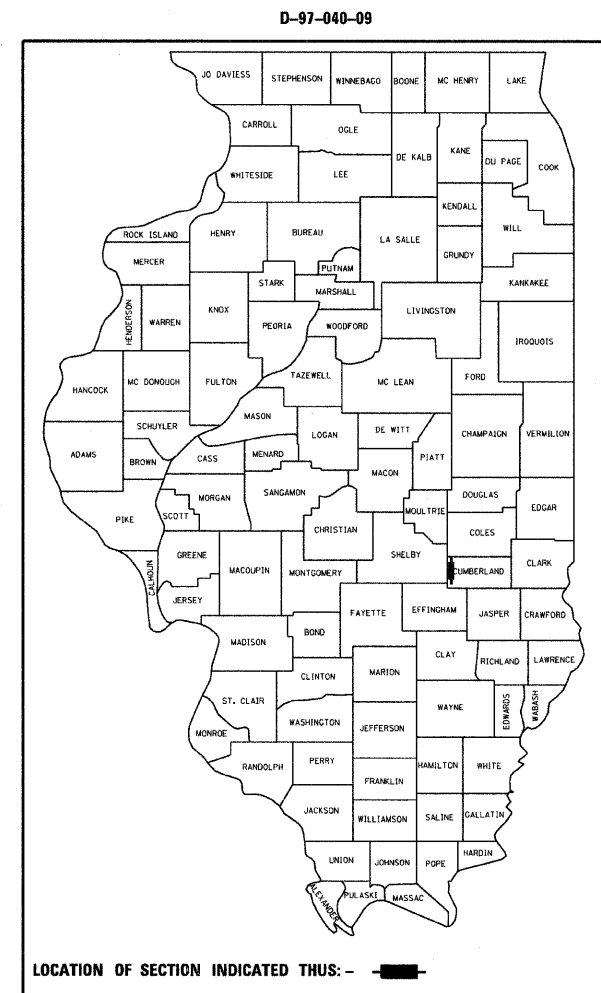
**PROPOSED  
HIGHWAY PLANS**

FAP ROUTE 828 (IL 121)  
SECTION D7 BEAM REPAIR 2009-1

CUMBERLAND COUNTY

C-97-070-09

FOR INDEX OF SHEETS, SEE SHEET NO. 2



FULL SIZE PLANS HAVE BEEN PREPARED USING STANDARD ENGINEERING SCALES. REDUCED SIZED PLANS WILL NOT CONFORM TO STANDARD SCALES. IN MAKING MEASUREMENTS ON REDUCED PLANS, THE ABOVE SCALES MAY BE USED.

J.U.L.I.E.  
JOINT UTILITY LOCATION INFORMATION FOR EXCAVATION  
1-800-892-0123  
OR 811

PROJECT ENGINEER: MARK DAUGHERTY  
PROJECT MANAGER: BRIAN J. BIERMAN

CONTRACT NO. 74384

STATE OF ILLINOIS  
DEPARTMENT OF TRANSPORTATION  
DIVISION OF HIGHWAYS

SUBMITTED February 9, 2009

*Robert L. Dunkel*  
DEPUTY DIRECTOR OF HIGHWAYS, REGION ENGINEER

March 27, 2009  
*Charles J. Ingersoll*  
ENGINEER OF DESIGN AND ENVIRONMENT

March 27, 2009  
*Christine M. Reed*  
DIRECTOR OF HIGHWAYS, CHIEF ENGINEER

PRINTED BY THE AUTHORITY  
OF THE STATE OF ILLINOIS