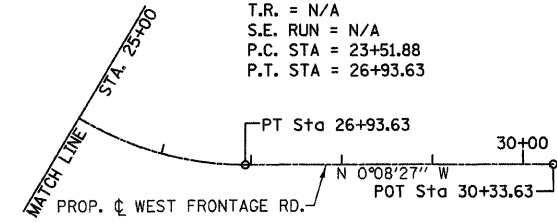


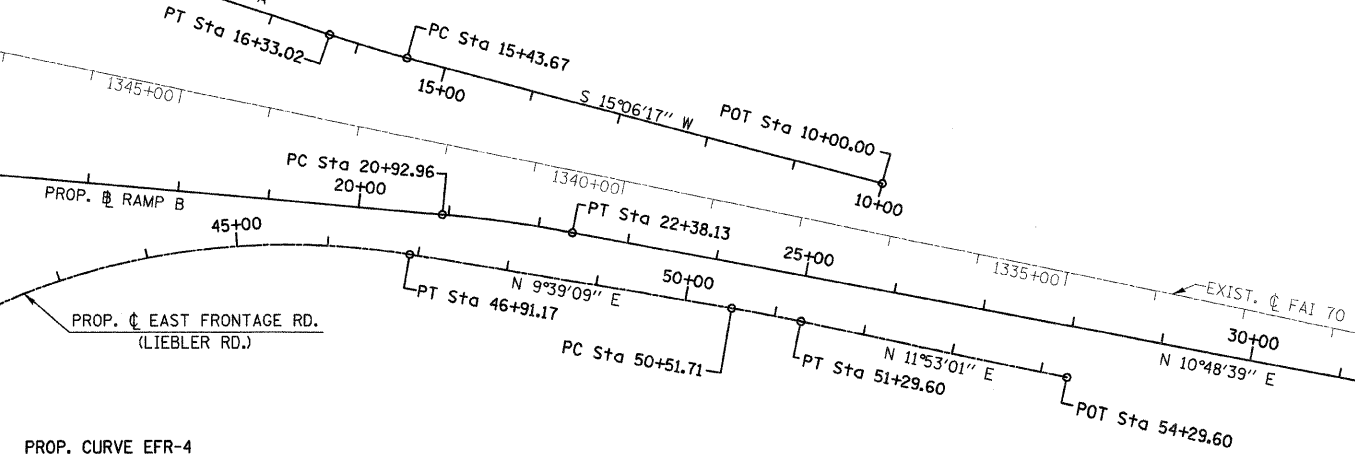
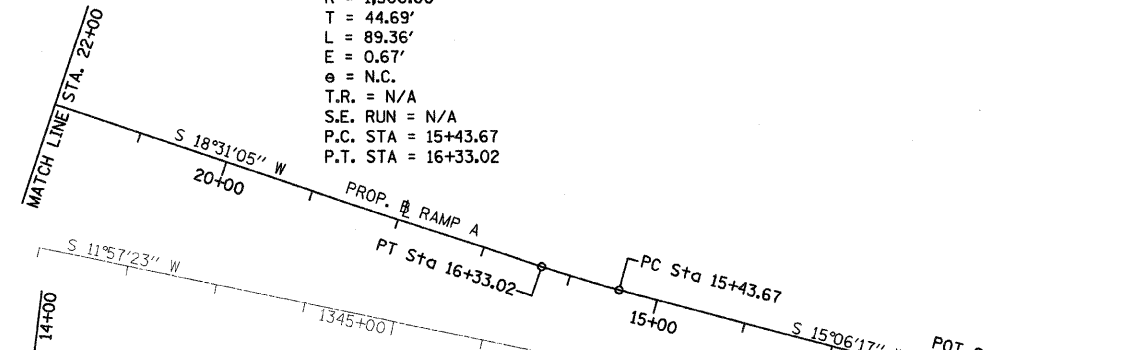
FAP ROUTE	SECTION	COUNTY	TOTAL SHEETS	SHEET NO
70	*	MADISON	420	33
STA.		TO STA.		
CONTRACT NO.: 76709				
60-10K-1, 60-10HB				



PROP. CURVE WFRUR-3
 PI STA. = 25+37.76
 $\Delta = 55^\circ 56' 38''$ (LT)
 $D = 16^\circ 22' 13''$
 $R = 350.00'$
 $T = 185.88'$
 $L = 341.74'$
 $E = 46.30'$
 $e = \text{N.C.}$
 $T.R. = \text{N/A}$
 $S.E. \text{ RUN} = \text{N/A}$
 $P.C. \text{ STA} = 23+51.88$
 $P.T. \text{ STA} = 26+93.63$



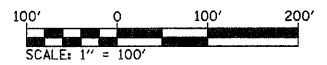
PROP. CURVE RAMP-A1
 PI STA. = 15+88.36
 $\Delta = 3^\circ 24' 47''$ (RT)
 $D = 3^\circ 49' 11''$
 $R = 1,500.00'$
 $T = 44.69'$
 $L = 89.36'$
 $E = 0.67'$
 $e = \text{N.C.}$
 $T.R. = \text{N/A}$
 $S.E. \text{ RUN} = \text{N/A}$
 $P.C. \text{ STA} = 15+43.67$
 $P.T. \text{ STA} = 16+33.02$



PROP. CURVE EFR-4
 PI STA. = 43+42.99
 $\Delta = 54^\circ 21' 05''$ (RT)
 $D = 7^\circ 09' 43''$
 $R = 800.00'$
 $T = 410.71'$
 $L = 758.89'$
 $E = 99.27'$
 $e = \text{N.C.}$
 $T.R. = \text{N/A}$
 $S.E. \text{ RUN} = \text{N/A}$
 $P.C. \text{ STA} = 39+32.28$
 $P.T. \text{ STA} = 46+91.17$

PROP. CURVE RAMP-B1
 PI STA. = 21+65.60
 $\Delta = 5^\circ 32' 42''$ (RT)
 $D = 3^\circ 49' 11''$
 $R = 1,500.00'$
 $T = 72.64'$
 $L = 145.17'$
 $E = 1.76'$
 $e = 4.90\%$
 $T.R. = \text{N/A}$
 $S.E. \text{ RUN} = 150'$
 $P.C. \text{ STA} = 20+92.96$
 $P.T. \text{ STA} = 22+38.13$

PROP. CURVE EFR-5
 PI STA. = 50+90.66
 $\Delta = 2^\circ 13' 53''$ (RT)
 $D = 2^\circ 51' 53''$
 $R = 2,000.00'$
 $T = 38.95'$
 $L = 77.89'$
 $E = 0.38'$
 $e = \text{N.C.}$
 $T.R. = \text{N/A}$
 $S.E. \text{ RUN} = \text{N/A}$
 $P.C. \text{ STA} = 50+51.71$
 $P.T. \text{ STA} = 51+29.60$



ILLINOIS DEPARTMENT OF TRANSPORTATION

ALIGNMENTS

FAI ROUTE 70
 SECTION 60-10K-1, 60-10HB
 MADISON COUNTY

DRAWN BY: td

PLOT DATE: *DATE-TIME*

REVISIONS	
NAME	DATE

PLAN	REVISIONS	DATE
NOTE BOOK	ALIGNED CHECKED	
NO.	PLOTTED	
	PAID FILE NAME	

DATE-TIME
 DGN-SPEC
 REF-236cat00.dgn
 REF