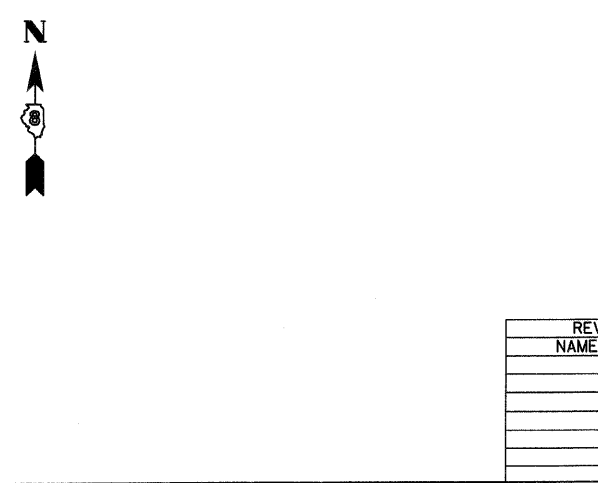
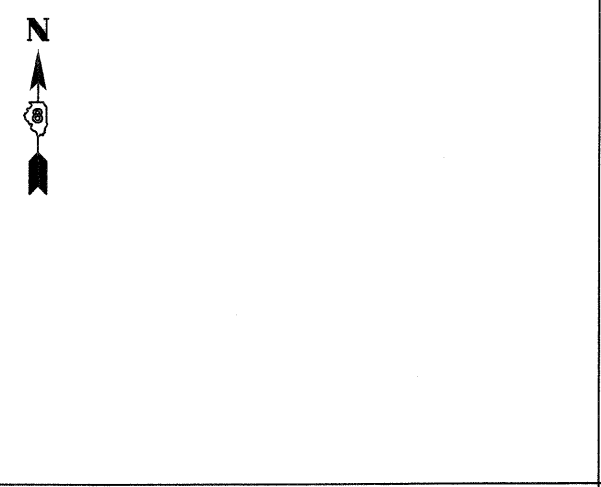
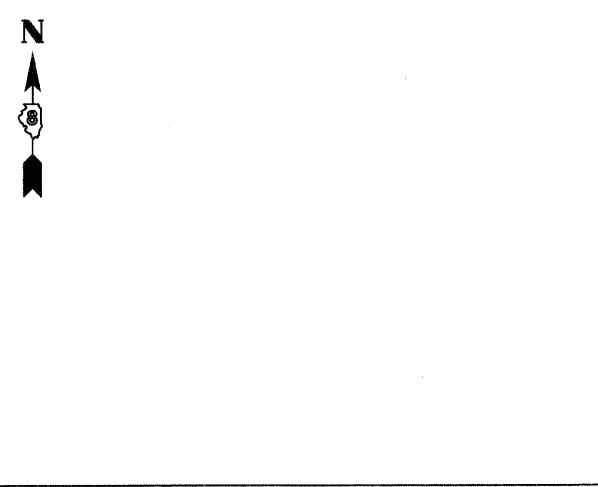
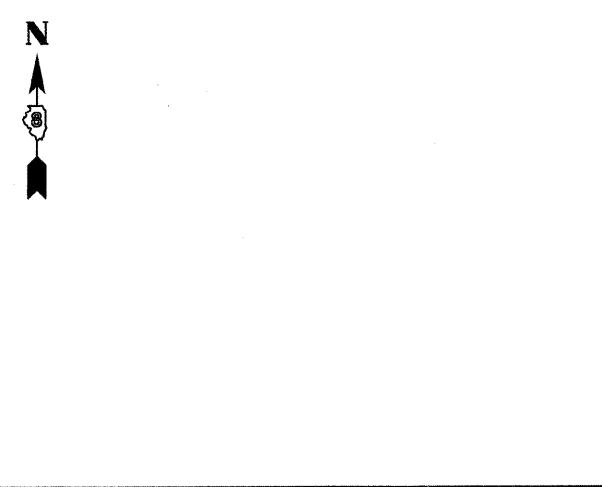
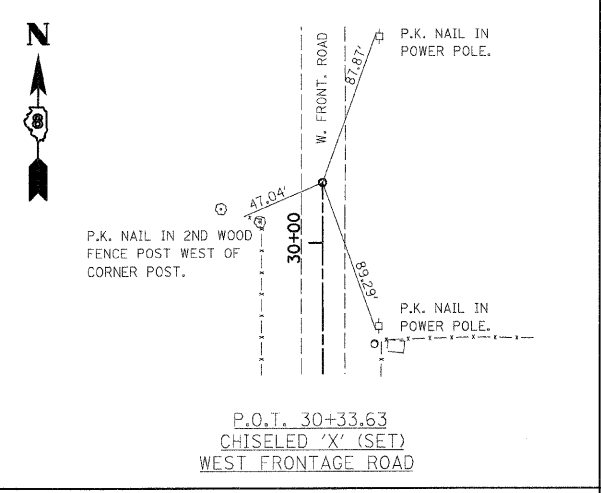
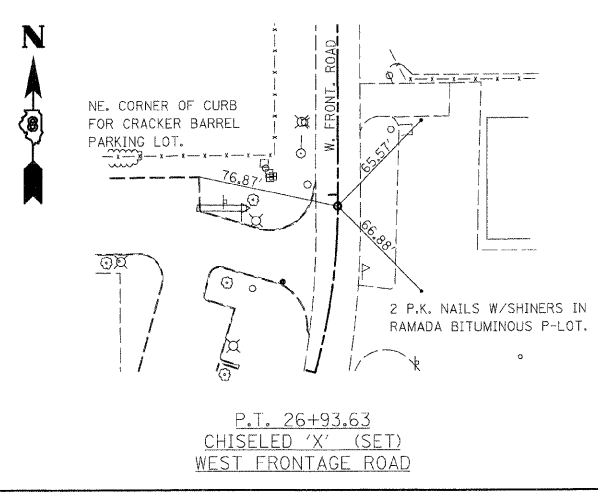
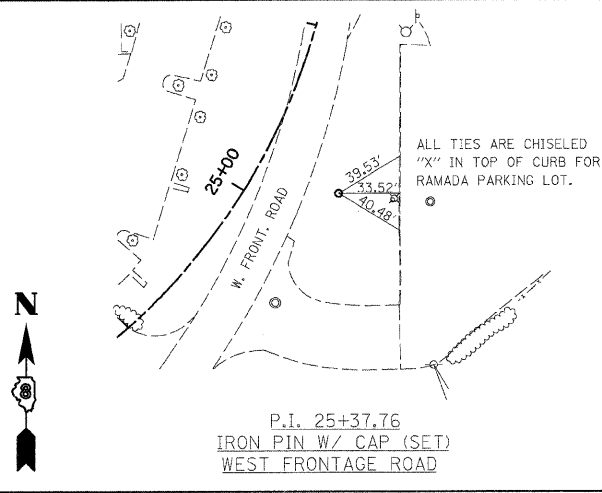
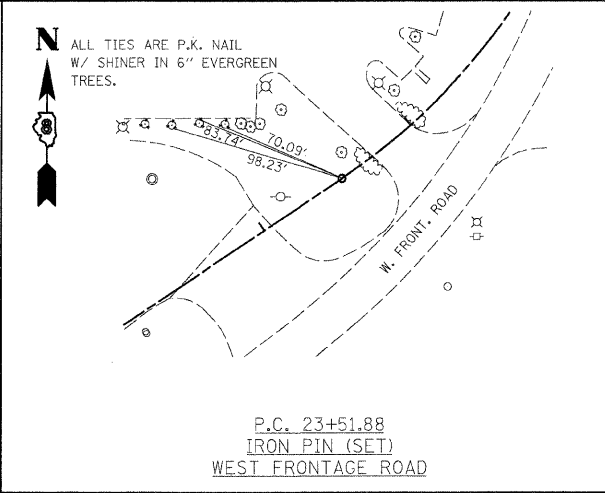
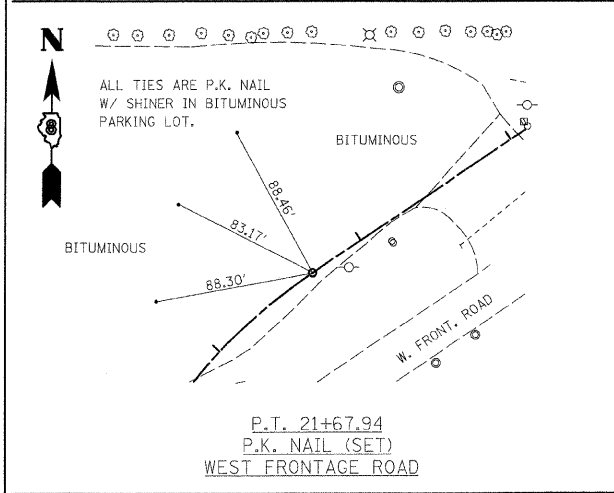
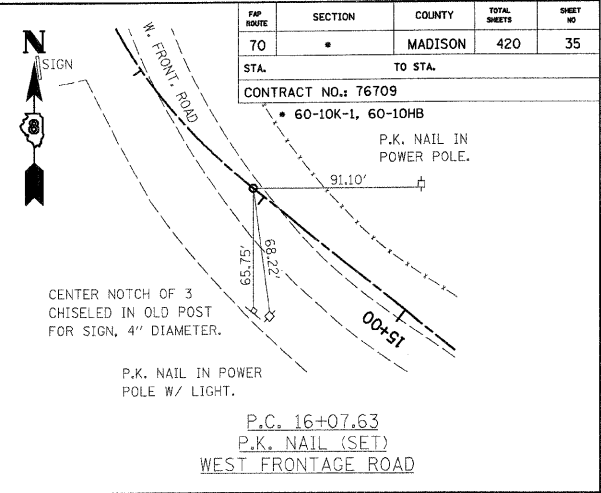
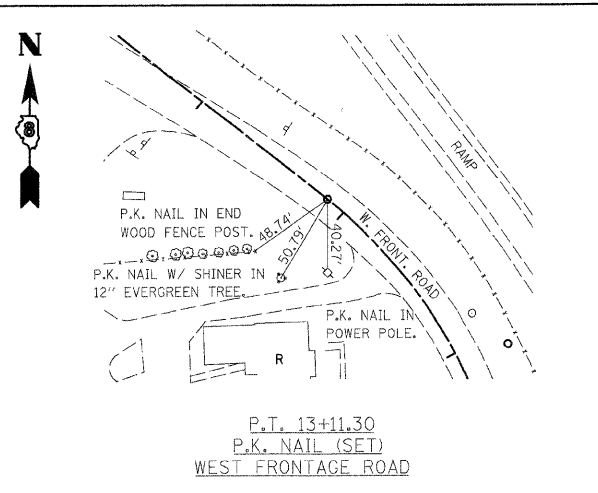
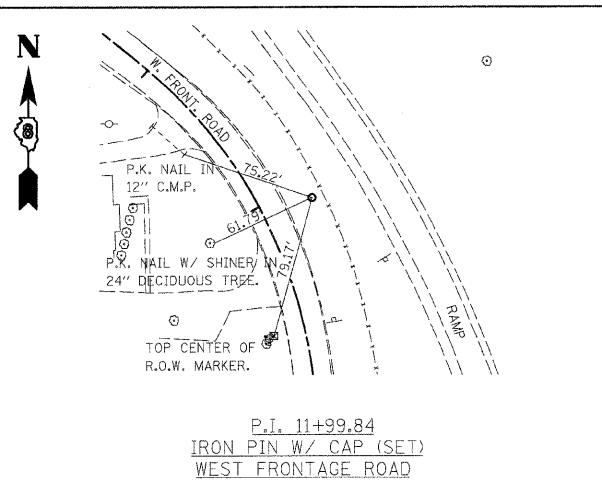
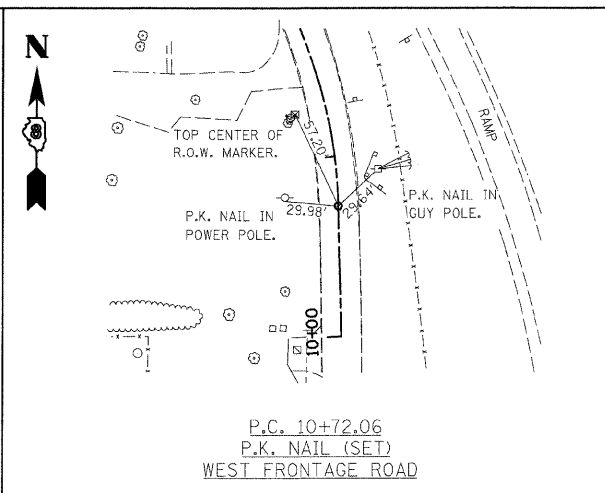
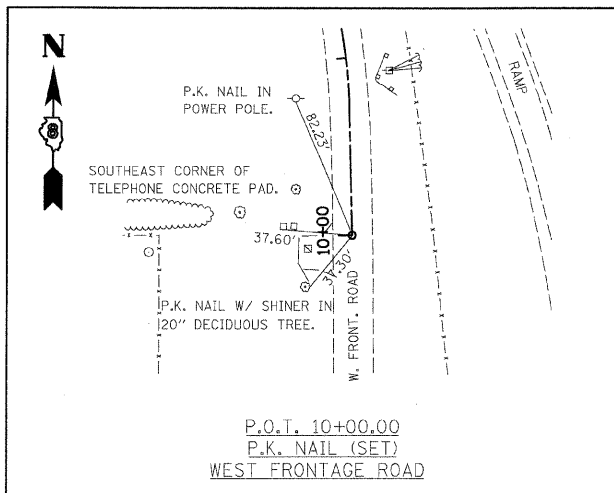


PLAN	SURVEYED	DATE
NOTE BOOK	ALIGNED	
NO.	CHECKED	
	BY	
	FILE NAME	



REVISIONS	
NAME	DATE

ILLINOIS DEPARTMENT OF TRANSPORTATION
ALIGNMENTS, TIES AND BENCHMARKS

FAI ROUTE 70
SECTION 60-10K-1, 60-10HB
MADISON COUNTY

DRAWN BY: HJB
PLOT DATE: *DATE-TIME*

FIP ROUTE	SECTION	COUNTY	TOTAL SHEETS	SHEET NO
70	*	MADISON	420	35

CONTRACT NO.: 76709
* 60-10K-1, 60-10HB

P.K. NAIL IN POWER POLE.

CENTER NOTCH OF 3 CHISELED IN OLD POST FOR SIGN, 4" DIAMETER.

P.K. NAIL IN POWER POLE W/ LIGHT.

P.K. NAIL IN END WOOD FENCE POST.

P.K. NAIL W/ SHINER IN 12" EVERGREEN TREE.

P.K. NAIL IN POWER POLE.

TOP CENTER OF R.O.W. MARKER.

P.K. NAIL IN GUY POLE.

P.K. NAIL W/ SHINER IN 24" DECIDUOUS TREE.

P.K. NAIL IN 12" C.M.P.

SOUTHEAST CORNER OF TELEPHONE CONCRETE PAD.

P.K. NAIL W/ SHINER IN 20" DECIDUOUS TREE.

ALL TIES ARE P.K. NAIL W/ SHINER IN BITUMINOUS PARKING LOT.

ALL TIES ARE CHISELED "X" IN TOP OF CURB FOR RAMADA PARKING LOT.

NE. CORNER OF CURB FOR CRACKER BARREL PARKING LOT.

2 P.K. NAILS W/SHINERS IN RAMADA BITUMINOUS P-LOT.

P.K. NAIL IN 2ND WOOD FENCE POST WEST OF CORNER POST.

P.K. NAIL IN POWER POLE.

P.K. NAIL IN POWER POLE.

P.K. NAIL IN POWER POLE.

P.K. NAIL IN POWER POLE.

P.K. NAIL IN POWER POLE.

P.K. NAIL IN POWER POLE.

P.K. NAIL IN POWER POLE.

P.K. NAIL IN POWER POLE.

P.K. NAIL IN POWER POLE.

P.K. NAIL IN POWER POLE.

P.K. NAIL IN POWER POLE.

P.K. NAIL IN POWER POLE.

P.K. NAIL IN POWER POLE.

P.K. NAIL IN POWER POLE.

P.K. NAIL IN POWER POLE.

P.K. NAIL IN POWER POLE.

P.K. NAIL IN POWER POLE.

P.K. NAIL IN POWER POLE.

P.K. NAIL IN POWER POLE.

P.K. NAIL IN POWER POLE.

P.K. NAIL IN POWER POLE.

P.K. NAIL IN POWER POLE.

P.K. NAIL IN POWER POLE.

P.K. NAIL IN POWER POLE.

P.K. NAIL IN POWER POLE.

P.K. NAIL IN POWER POLE.

P.K. NAIL IN POWER POLE.