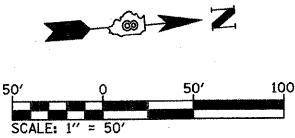
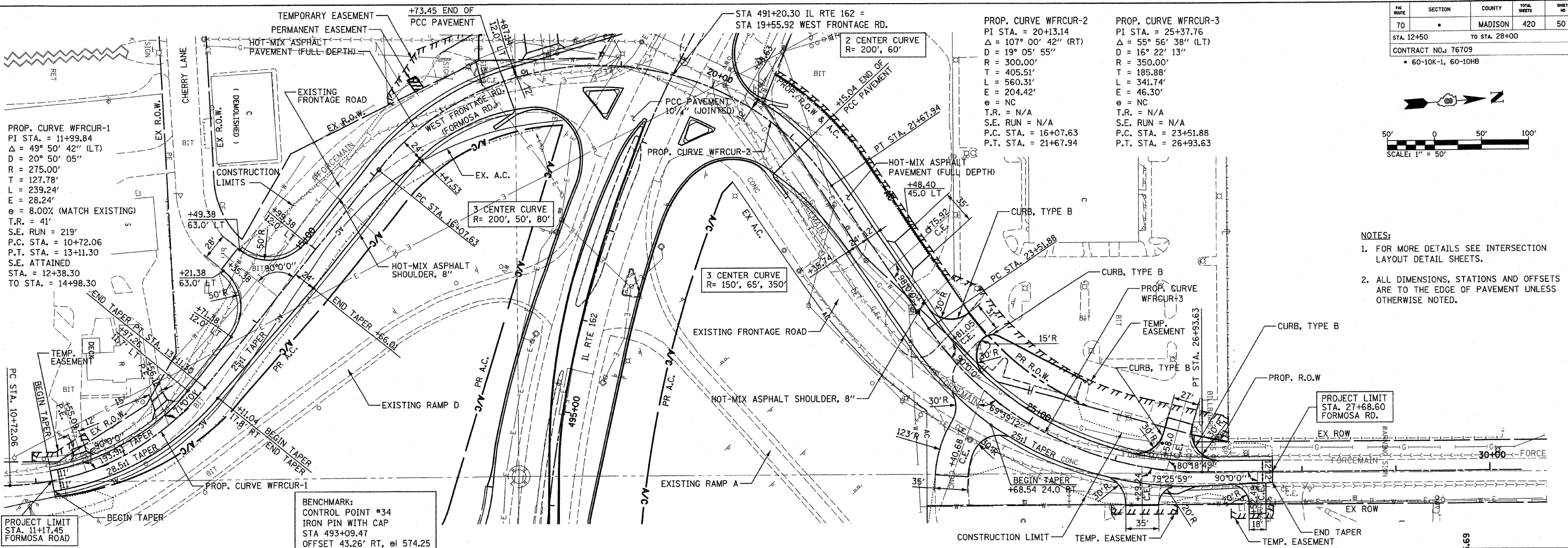


SECTION	COUNTY	TOTAL SHEETS	SHEET NO.
70	MADISON	420	50

STA. 12+50 TO STA. 28+00
CONTRACT NO.: 76709
• 60-10K-1, 60-10HB



- NOTES:**
- FOR MORE DETAILS SEE INTERSECTION LAYOUT DETAIL SHEETS.
 - ALL DIMENSIONS, STATIONS AND OFFSETS ARE TO THE EDGE OF PAVEMENT UNLESS OTHERWISE NOTED.

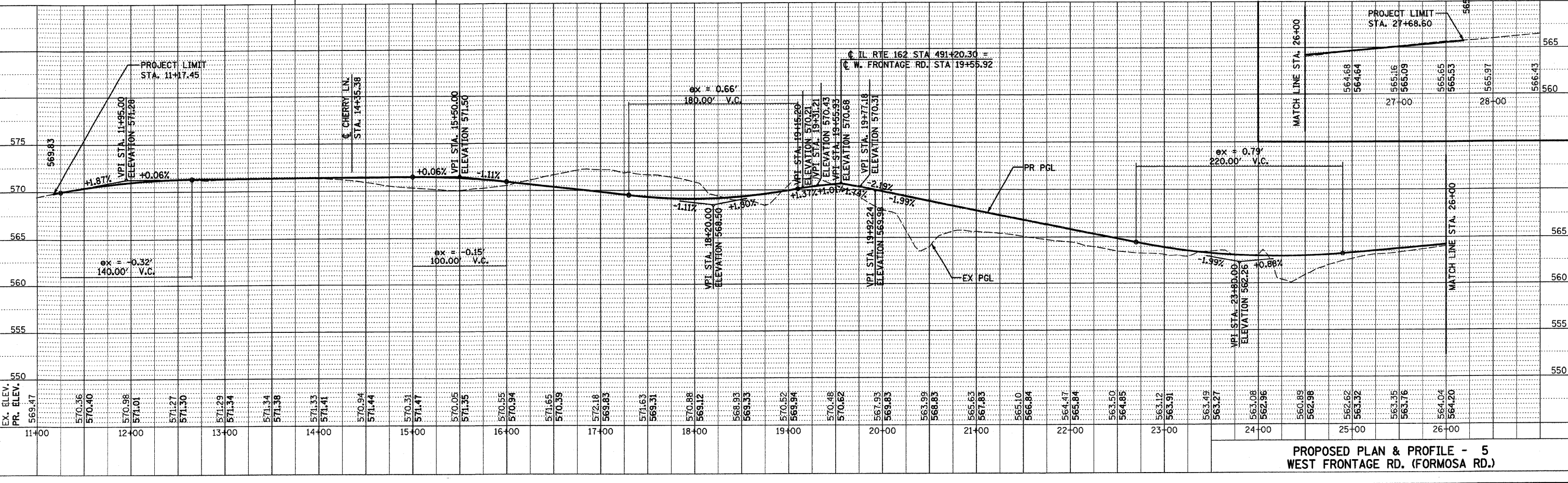


PROP. CURVE WFRCUR-1
 PI STA. = 11+99.84
 $\Delta = 49^\circ 50' 42''$ (LT)
 $D = 20^\circ 50' 05''$
 $R = 275.00'$
 $T = 127.78'$
 $L = 239.24'$
 $E = 28.24'$
 $e = 8.00%$ (MATCH EXISTING)
 $T.R. = 41'$
 $S.E. RUN = 219'$
 $P.C. STA. = 10+72.06$
 $P.T. STA. = 13+11.30$
 $S.E. ATTAINED STA. = 12+38.30$
 $TO STA. = 14+98.30$

PROP. CURVE WFRCUR-2
 PI STA. = 20+13.14
 $\Delta = 107^\circ 00' 42''$ (RT)
 $D = 19^\circ 05' 55''$
 $R = 300.00'$
 $T = 405.51'$
 $L = 560.31'$
 $E = 204.42'$
 $e = NC$
 $T.R. = N/A$
 $S.E. RUN = N/A$
 $P.C. STA. = 16+07.63$
 $P.T. STA. = 21+67.94$

PROP. CURVE WFRCUR-3
 PI STA. = 25+37.76
 $\Delta = 55^\circ 56' 38''$ (LT)
 $D = 16^\circ 22' 13''$
 $R = 350.00'$
 $T = 185.88'$
 $L = 341.74'$
 $E = 46.30'$
 $e = NC$
 $T.R. = N/A$
 $S.E. RUN = N/A$
 $P.C. STA. = 23+51.88$
 $P.T. STA. = 26+93.63$

BENCHMARK:
 CONTROL POINT #34
 IRON PIN WITH CAP
 STA 493+09.47
 OFFSET 43.26' RT, el 574.25



PROPOSED PLAN & PROFILE - 5
WEST FRONTAGE RD. (FORMOSA RD.)

PLOT DATE: *DATE-TIME*

NO.	DATE	BY

NO.	DATE	BY

DGN-SPEC
 *REF- 236cfr01.dgn
 *REF- 236cfr01.dgn
 *REF- 236cfr01.dgn
 *REF- 236cfr01.dgn
 *REF- 236cfr01.dgn