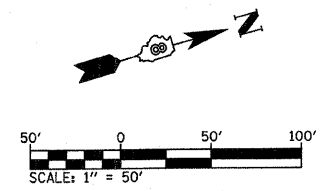
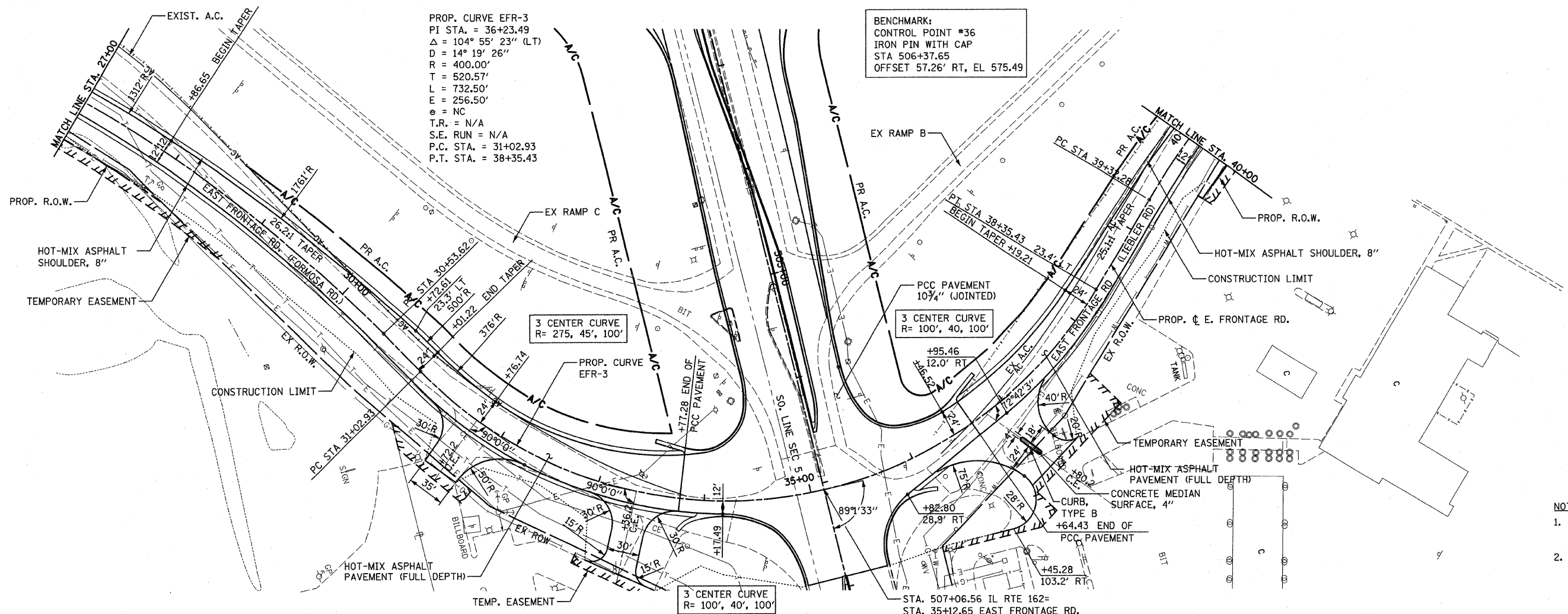


FILE ROUTE	SECTION	COUNTY	TOTAL SHEETS	SHEET NO.
70		MADISON	420	52
STA. 27+00		TO STA. 40+00		
CONTRACT NO.: 76709				
• 60-10K-1, 60-10HB				



PROP. CURVE EFR-3  
 PI STA. = 36+23.49  
 $\Delta = 104^\circ 55' 23''$  (L.T.)  
 $D = 14^\circ 19' 26''$   
 $R = 400.00'$   
 $T = 520.57'$   
 $L = 732.50'$   
 $E = 256.50'$   
 $\circ = NC$   
 $T.R. = N/A$   
 $S.E. RUN = N/A$   
 $P.C. STA. = 31+02.93$   
 $P.T. STA. = 38+35.43$

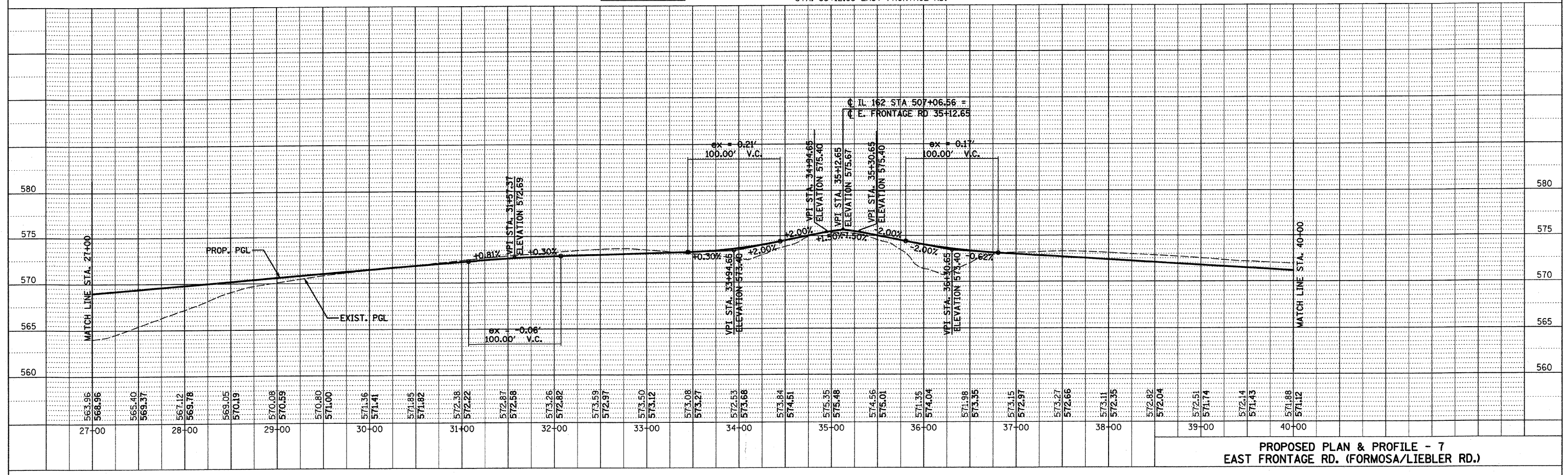
BENCHMARK:  
 CONTROL POINT #36  
 IRON PIN WITH CAP  
 STA 506+37.65  
 OFFSET 57.26' RT, EL 575.49



PLAN	DATE	BY
REVISIONS		
NO.		
NOTE BOOK		
ALIGNED		
CHECKED		
CADD FILE NAME		

- NOTES:
- FOR MORE DETAILS SEE INTERSECTION LAYOUT DETAIL SHEETS.
  - ALL DIMENSIONS, STATIONS AND OFFSETS ARE TO THE EDGE OF PAVEMENT UNLESS OTHERWISE NOTED.

PROFILE	DATE	BY
REVISIONS		
NO.		
NOTE BOOK		
GRADES CHECKED		
STRUCTURE NOTATIONS CHFD		



PROPOSED PLAN & PROFILE - 7  
 EAST FRONTAGE RD. (FORMOSA/LIEBLER RD.)

PLOT DATE: \*DATE-TIME\*

\*DGN-SPEC\*  
 \*REF- 236c01.dgn  
 \*REF- 236c01.dgn  
 \*REF- 236c01.dgn  
 \*REF- 236c01.dgn  
 \*REF- 236c01.dgn