

FAP ROUTE	SECTION	COUNTY	TOTAL SHEETS	SHEET NO
70	*	MADISON	420	72
STA.		TO STA.		
CONTRACT NO.: 76709				
* 60-10K-1,60-10HB				



LEGEND:

- EXISTING OR NEW PAVEMENT USED FOR MAINTENANCE OF TRAFFIC
- CONSTRUCTION LIMITS DURING STAGE
- DIRECTION OF TRAFFIC ARROW
- NEW PAVEMENT
- TEMPORARY PAVEMENT
- TEMPORARY TRAFFIC SIGN

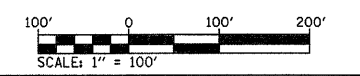
IL ROUTE 162

STAGE II TRAFFIC

1. CONSTRUCT TEMPORAY PAVEMENT ALONG WESTBOUND TRAFFIC LANES. TWO-WAY TRAFFIC THEN USES WESTBOUND LANES AND TEMPORARY PAVEMENT

STAGE II CONSTRUCTION

1. CONSTRUCT EASTBOUND LANES FOR IL. ROUTE 162.



ILLINOIS DEPARTMENT OF TRANSPORTATION
MAINTENANCE OF TRAFFIC - 11
STAGE II PLAN VIEW

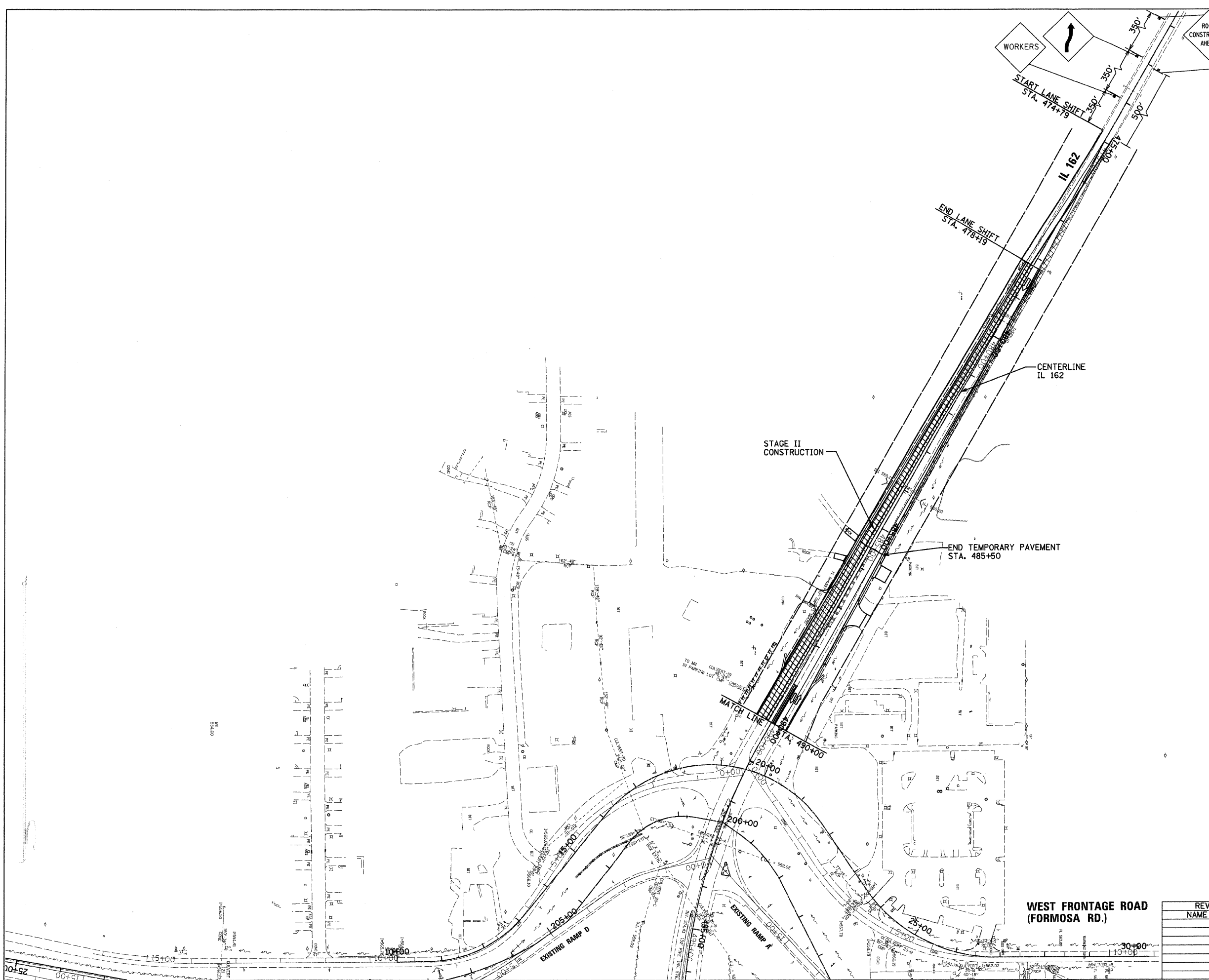
FAP ROUTE 70
 SECTION 60-10K-1, 60-10HB
 MADISON COUNTY

DRAWN BY: HJB

PLOT DATE: *DATE-TIME*

REVISIONS	
NAME	DATE

WEST FRONTAGE ROAD
(FORMOSA RD.)



PLAN	SURVEYED	DATE
NOTE BOOK NO.	PLOTTED	
	CHECKED	
	BY	

DATE-TIME
 DON-SPEC
 REF
 REV