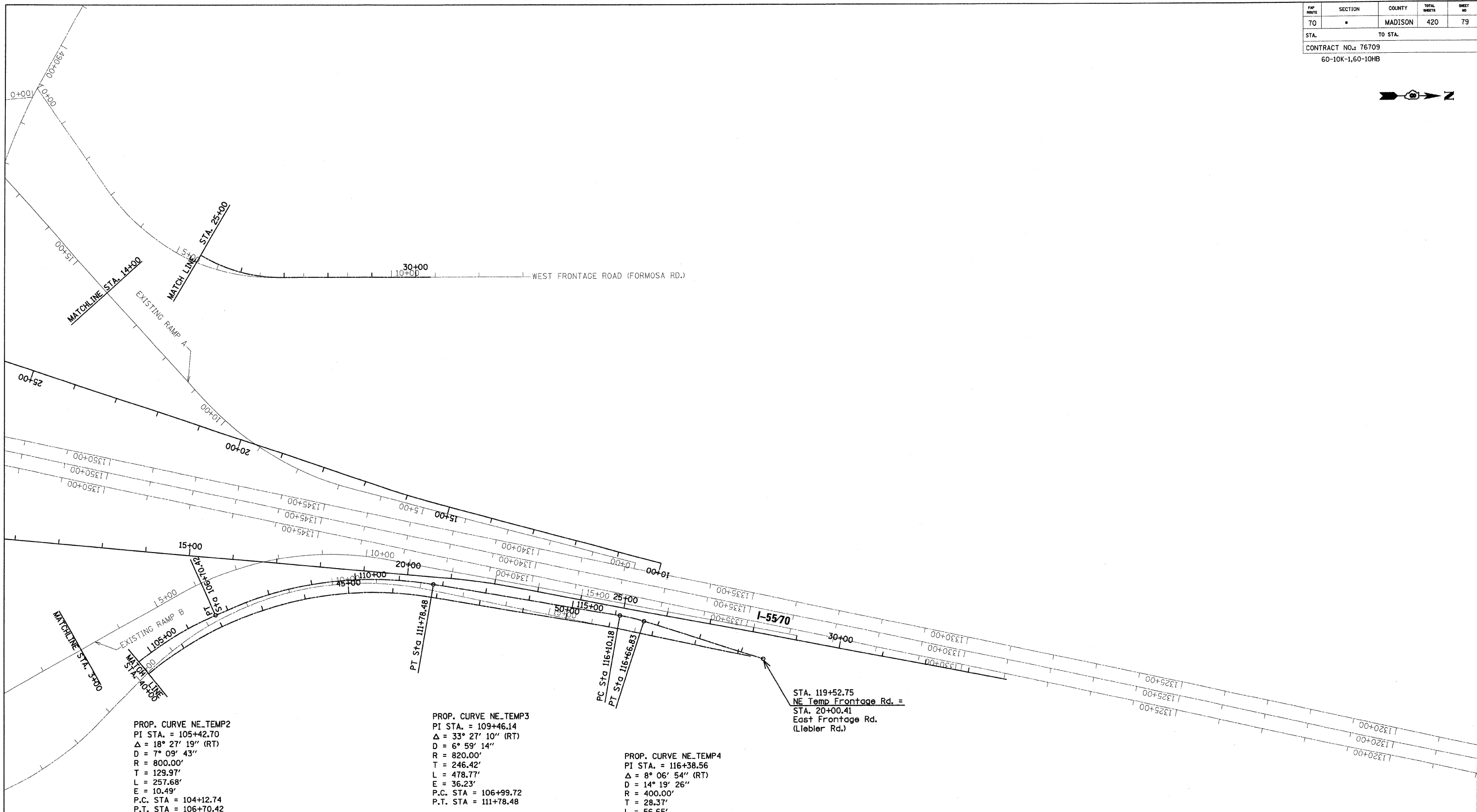


FWP ROUTE	SECTION	COUNTY	TOTAL SHEETS	SHEET NO
70	*	MADISON	420	79
STA.		TO STA.		
CONTRACT NO.: 76709				
60-10K-1,60-10HB				



PLAN	SURVEYED	DATE
NOTE BOOK NO.	PLOTTED	BY
	REVISIONS	
	PL. OF WAY CHECKED	
	CADD FILE NAME	

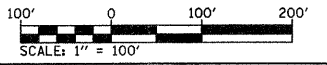


PROP. CURVE NE\_TEMP2  
 PI STA. = 105+42.70  
 $\Delta = 18^\circ 27' 19''$  (RT)  
 $D = 7^\circ 09' 43''$   
 $R = 800.00'$   
 $T = 129.97'$   
 $L = 257.68'$   
 $E = 10.49'$   
 P.C. STA = 104+12.74  
 P.T. STA = 106+70.42

PROP. CURVE NE\_TEMP3  
 PI STA. = 109+46.14  
 $\Delta = 33^\circ 27' 10''$  (RT)  
 $D = 6^\circ 59' 14''$   
 $R = 820.00'$   
 $T = 246.42'$   
 $L = 478.77'$   
 $E = 36.23'$   
 P.C. STA = 106+99.72  
 P.T. STA = 111+78.48

PROP. CURVE NE\_TEMP4  
 PI STA. = 116+38.56  
 $\Delta = 8^\circ 06' 54''$  (RT)  
 $D = 14^\circ 19' 26''$   
 $R = 400.00'$   
 $T = 28.37'$   
 $L = 56.65'$   
 $E = 1.01'$   
 P.C. STA = 116+10.18  
 P.T. STA = 116+66.83

STA. 119+52.75  
 NE Temp Frontage Rd. =  
 STA. 20+00.41  
 East Frontage Rd.  
 (Liebler Rd.)



REVISIONS	
NAME	DATE

ILLINOIS DEPARTMENT OF TRANSPORTATION  
**MAINTENANCE OF TRAFFIC  
 STAGE I TEMPORARY ALIGNMENT**  
 FAI ROUTE 70  
 SECTION 60-10K-1, 60-10HB  
 MADISON COUNTY

DRAWN BY: HJB  
 PLOT DATE: \*DATE-TIME\*

\*DATE-TIME\*  
 \*DGN-SPEC\*  
 \*REF\*