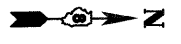
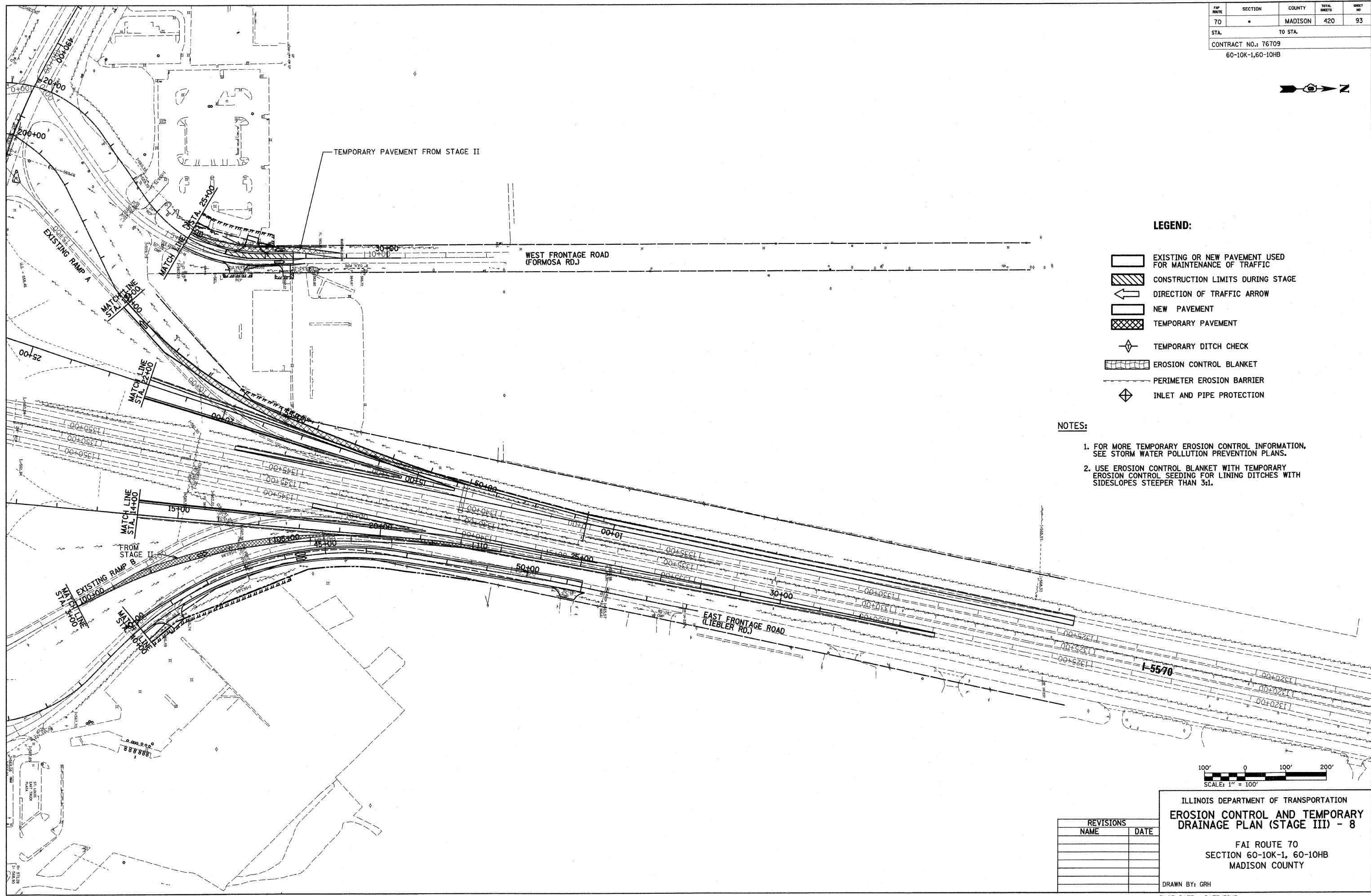


FAP ROUTE	SECTION	COUNTY	TOTAL SHEETS	SHEET NO
70	*	MADISON	420	93
STA.	TO STA.			
CONTRACT NO.: 76709				
60-10K-1,60-10HB				



PLAN	DATE
BY	
REVISIONS	
PLOTTED	
ALIGNMENT CHECKED	
AS NOTED	
NO. DATE	

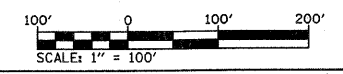


LEGEND:

- EXISTING OR NEW PAVEMENT USED FOR MAINTENANCE OF TRAFFIC
- CONSTRUCTION LIMITS DURING STAGE
- DIRECTION OF TRAFFIC ARROW
- NEW PAVEMENT
- TEMPORARY PAVEMENT
- TEMPORARY DITCH CHECK
- EROSION CONTROL BLANKET
- PERIMETER EROSION BARRIER
- INLET AND PIPE PROTECTION

NOTES:

1. FOR MORE TEMPORARY EROSION CONTROL INFORMATION, SEE STORM WATER POLLUTION PREVENTION PLANS.
2. USE EROSION CONTROL BLANKET WITH TEMPORARY EROSION CONTROL SEEDING FOR LINING DITCHES WITH SIDESLOPES STEEPER THAN 3:1.



ILLINOIS DEPARTMENT OF TRANSPORTATION
EROSION CONTROL AND TEMPORARY DRAINAGE PLAN (STAGE III) - 8

FAI ROUTE 70
 SECTION 60-10K-1, 60-10HB
 MADISON COUNTY

DRAWN BY: GRH

PLOT DATE: *DATE-TIME*

REVISIONS	NAME	DATE

DON-SPEC
 *REF-
 *REF-