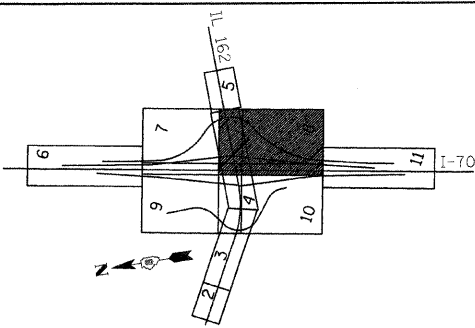


FAI ROUTE	SECTION	COUNTY	TOTAL SHEETS	SHEET NO
70		MADISON	420	111
STA. 1353+15.77		TO STA. 1365+00		
CONTRACT NO. 76709				
• 60-10K, 60-10-4HB				

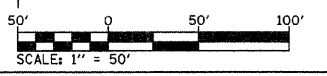
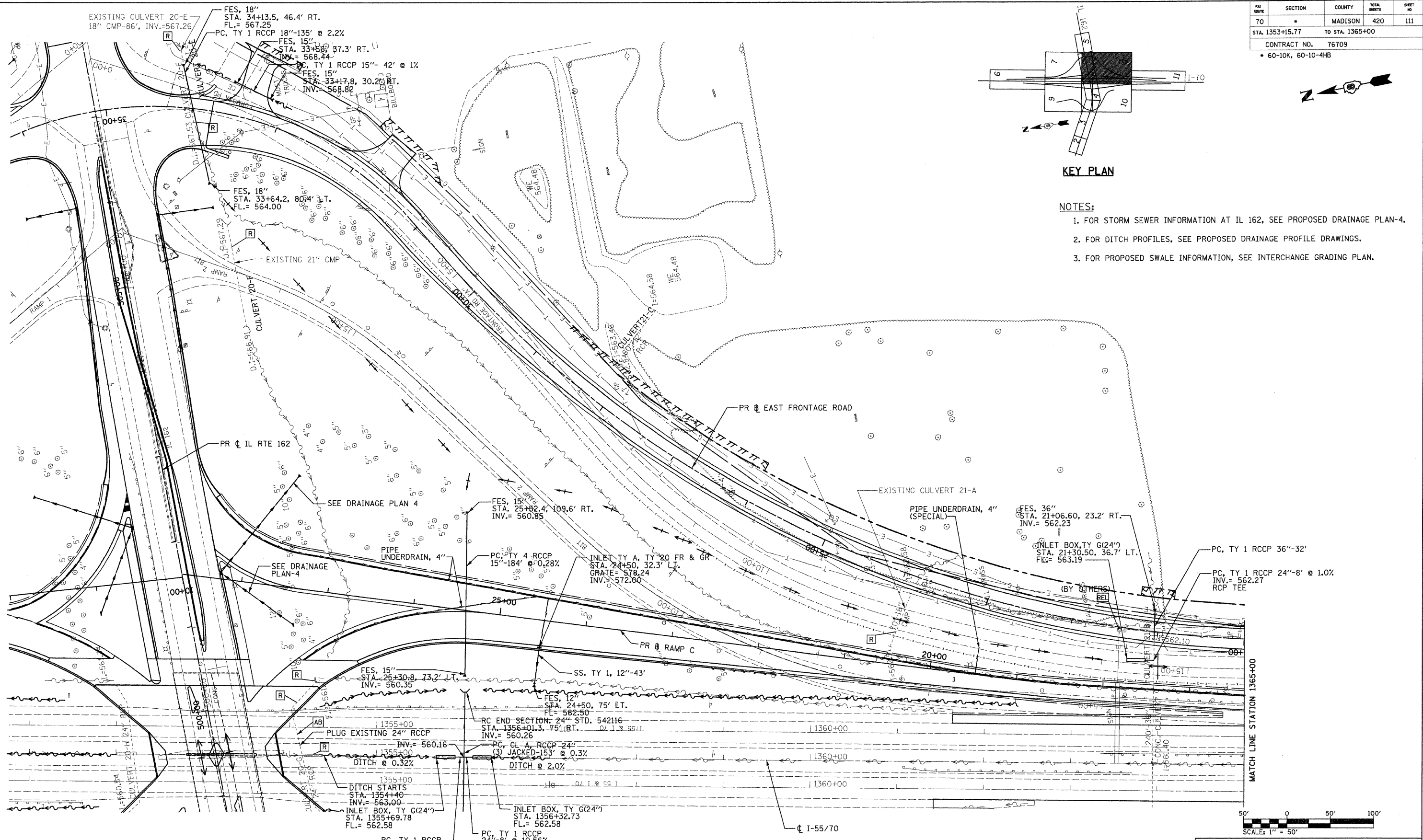


KEY PLAN

NOTES:

1. FOR STORM SEWER INFORMATION AT IL 162, SEE PROPOSED DRAINAGE PLAN-4.
2. FOR DITCH PROFILES, SEE PROPOSED DRAINAGE PROFILE DRAWINGS.
3. FOR PROPOSED SWALE INFORMATION, SEE INTERCHANGE GRADING PLAN.

PLAN	SURVEYED	DATE
	PLOTTED	
	CHECKED	
	BY	
	NO.	



ILLINOIS DEPARTMENT OF TRANSPORTATION
PROPOSED DRAINAGE PLAN - 8

FAI ROUTE 70
SECTION 60-10K, 60-10-4HB
MADISON COUNTY

DRAWN BY: GRH

PLOT DATE: *DATE-TIME*

REVISIONS	
NAME	DATE

DATE-TIME
DON-SPEC
REF-236cd-01.dgn
REF-236cd-01.dgn
REF-236cd-01.dgn
REF-236cd-01.dgn