

COORDINATES SHOWN HEREON ARE BASED ON SURVEY CONTROL DATA AS PROVIDED BY THE ILLINOIS DEPARTMENT OF TRANSPORTATION.

BEARINGS SHOWN HEREON ARE BASED ON SURVEY CONTROL DATA AS PROVIDED BY THE ILLINOIS DEPARTMENT OF TRANSPORTATION.

TOTAL SHEETS	967
420	122

PART OF THE NW 1/4 OF SECTION 8, T3N, R7W, OF THE 3RD PM, MADISON COUNTY, ILLINOIS

STATION	OFFSET	NORTH	EAST
13+17.89	0.00' RT	750468.4854	2368958.7394
13+71.04	0.71' RT	750520.4907	2368969.7099
14+24.16	0.00' RT	750571.8400	2368983.4270
14+75.00	42.46' RT	750609.9970	2369037.5705
14+98.00	65.00' RT	750626.4009	2369065.2813
17+00.00	35.00' RT	750829.3002	2369088.4306
18+18.21	0.00' RT	751316.2790	2369114.5845
18+66.40	0.77' LT	751362.8267	2369127.0691
19+14.56	0.00' RT	751408.4771	2369142.5159

STATION	OFFSET	NORTH	EAST
19+91.06	0.00' RT	751328.9891	2368944.4045
20+26.54	0.00' RT	751153.8070	2369138.8900
20+26.54	40.00' RT	751143.4874	2369177.5359
20+75.10	2.35' LT	751245.1954	2368937.9854
21+58.96	0.00' RT	751162.6432	2368922.2465
25+08.44	40.00' RT	751562.3868	2369378.0262
25+68.57	108.48' LT	751677.4814	2369278.7823
495+74.21	35.52' RT	752292.9185	2368856.9415
1380+89.96	216.16' LT	749556.2539	2368871.8329

NE 1/4 SEC. 7
T 3 N, R 7 W, 3rd P.M.

SEE SHEET 3

POC 8016192
POC 8016192TE
Brass Mon.
NW Cor. Sec. 8
T 3 N, R 7 W, 3rd PM
495+74.21
35.52' RT



LEGEND

- EXISTING CENTERLINE
- EXISTING RIGHT OF WAY LINE
- EXISTING EASEMENT LINE
- PROPOSED CENTERLINE
- PROPOSED RIGHT OF WAY LINE
- PROPOSED TEMPORARY EASEMENT LINE
- PROPOSED PERMANENT EASEMENT LINE
- SECTION LINE
- QUARTER SECTION LINE
- PROPERTY (DEED) LINE
- APPARENT PROPERTY LINE
- 121.45
123.45 (COMP)
(123.45)
- 123.45
- 123.45
- FOUND IRON PIPE OR IRON ROD
- SET 1/2 INCH IRON ROD
- PERMANENT SURVEY MONUMENT, I.D.O.T. STD. 667101 (TO BE SET BY OTHERS)
- CUT CROSS FOUND OR SET
- SAME OWNERSHIP

- STAKING OF PROPOSED RIGHT OF WAY. SET 3/8 INCH METAL ROD WITH DIVISION OF HIGHWAY SURVEY MARKER TO MONUMENT THE POSITION SHOWN, IDENTIFIED BY INSCRIPTION DATA AND SURVEYORS REGISTRATION NUMBER.
- STAKING OF PROPOSED RIGHT OF WAY IN CULTIVATED AREAS. SET 3/8 INCH METAL ROD WITH DIVISION OF HIGHWAY SURVEY MARKER 20 INCHES BELOW GROUND SURFACE TO MONUMENT THE POSITION SHOWN, IDENTIFIED BY INSCRIPTION DATA AND SURVEYORS REGISTRATION NUMBER.

STATE OF ILLINOIS)
COUNTY OF) SS

THIS IS TO CERTIFY THAT I, THOMAS M. DRONE, AN ILLINOIS PROFESSIONAL LAND SURVEYOR, HAVE SURVEYED THE PLAT OF HIGHWAYS SHOWN HEREON IN SECTION 8, TOWNSHIP 3 NORTH, RANGE 7 WEST, OF THE THIRD PRINCIPAL MERIDIAN, MADISON COUNTY, THAT THE SURVEY IS TRUE AND COMPLETE AS SHOWN TO THE BEST OF MY KNOWLEDGE AND BELIEF, THAT THE PLAT CORRECTLY REPRESENTS SAID SURVEY, THAT ALL MONUMENTS FOUND AND ESTABLISHED ARE OF PERMANENT QUALITY AND OCCUPY THE POSITIONS SHOWN THEREON AND THAT THE MONUMENTS ARE SUFFICIENT TO ENABLE THE SURVEY TO BE RETRACED. MADE FOR THE DEPARTMENT OF TRANSPORTATION, STATE OF ILLINOIS.

DATED _____
THOMAS M. DRONE, PLS #2273

SEE SHEET 2

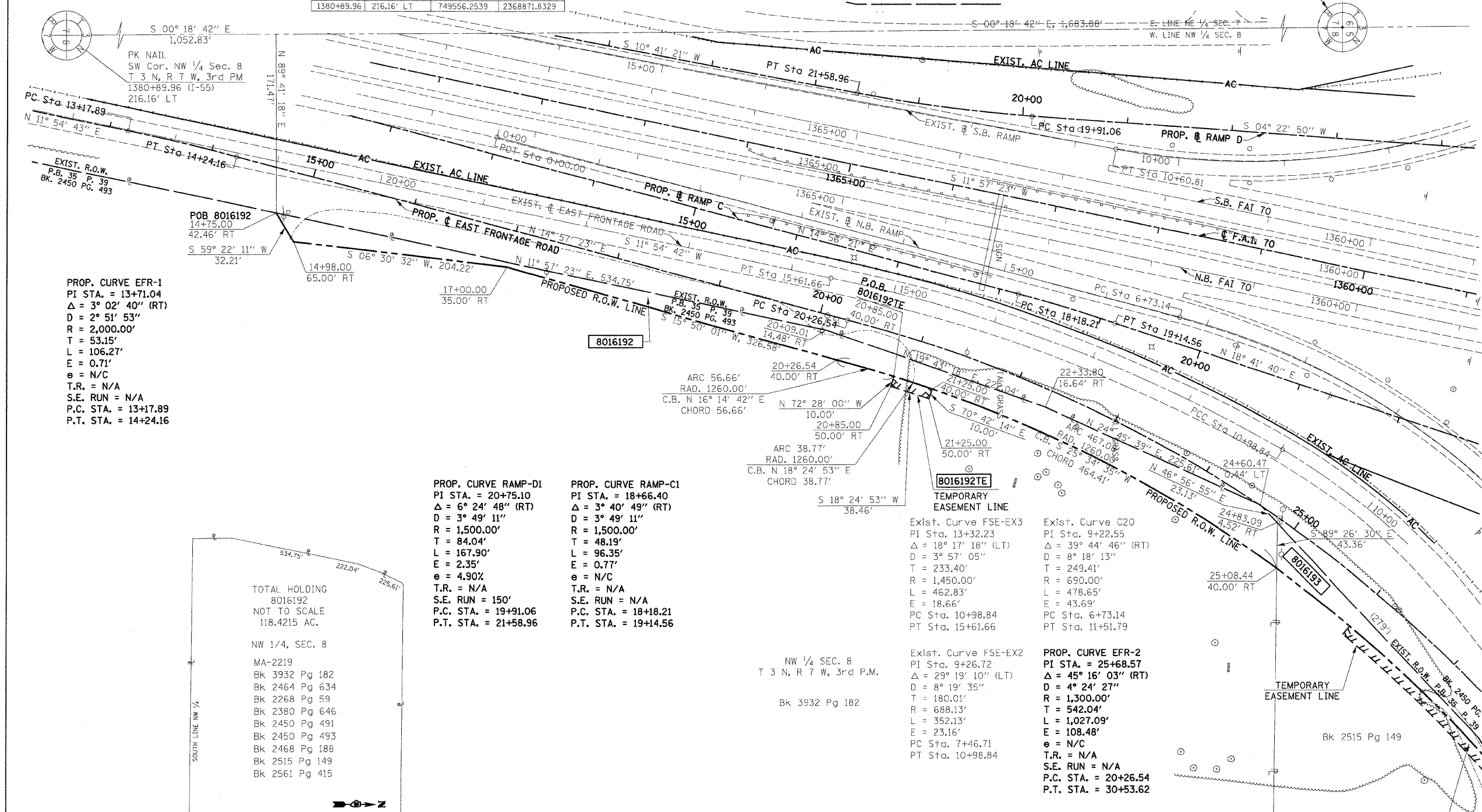
Hurst-Rosche Engineers, Inc.
2657 W. Lawrence
Springfield, IL. 62704
217-787-1199

ILLINOIS DEPARTMENT OF TRANSPORTATION
PLAT OF HIGHWAYS
FAP ROUTE 568 (IL 162)
SECTION 60-10K-1, 60-10-HB
MADISON COUNTY
JOB NO. R-98-016-00

STATION 14+00 TO STATION 26+00
SCALE: 1" = 50'
SHEET 1 OF

ILLINOIS DEPARTMENT OF TRANSPORTATION
DIVISION OF HIGHWAYS/DISTRICT 8
1102 EASTPORT PLAZA DRIVE
COLLINGSVILLE, ILLINOIS 62234-6198

SHEET 1 OF IS A COVER SHEET AND IS NOT RECORDED



PROP. CURVE EFR-1
PI STA. = 13+71.04
Δ = 3° 02' 40" (RT)
D = 2° 51' 53"
R = 2,000.00'
T = 53.15'
L = 106.27'
E = 0.71'
e = N/C
T.R. = N/A
S.E. RUN = N/A
P.C. STA. = 13+17.89
P.T. STA. = 14+24.16

PROP. CURVE RAMP-D1
PI STA. = 20+75.10
Δ = 6° 24' 48" (RT)
D = 3° 49' 11"
R = 1,500.00'
T = 84.04'
L = 167.90'
E = 2.35'
e = 4.90%
T.R. = N/A
S.E. RUN = 150'
P.C. STA. = 19+91.06
P.T. STA. = 21+58.96

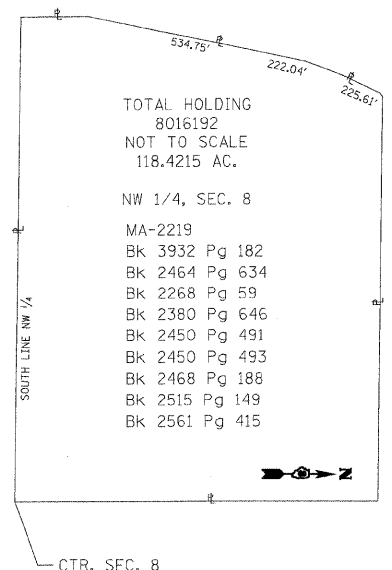
PROP. CURVE RAMP-C1
PI STA. = 18+66.40
Δ = 3° 40' 49" (RT)
D = 3° 49' 11"
R = 1,500.00'
T = 48.19'
L = 96.35'
E = 0.77'
e = N/C
T.R. = N/A
S.E. RUN = N/A
P.C. STA. = 18+18.21
P.T. STA. = 19+14.56

Exist. Curve FSE-EX3
PI Sta. 13+32.23
Δ = 18° 17' 18" (LT)
D = 3° 57' 05"
T = 233.40'
R = 1,450.00'
L = 462.83'
E = 18.66'
PC Sta. 10+98.84
PT Sta. 15+61.66

Exist. Curve C20
PI Sta. 9+22.55
Δ = 39° 44' 46" (RT)
D = 8° 18' 13"
T = 249.41'
R = 690.00'
L = 478.65'
E = 43.69'
PC Sta. 6+73.14
PT Sta. 11+51.79

Exist. Curve FSE-EX2
PI Sta. 9+26.72
Δ = 29° 19' 10" (LT)
D = 8° 19' 35"
T = 180.01'
R = 688.13'
L = 352.13'
E = 23.16'
PC Sta. 7+46.71
PT Sta. 10+98.84

PROP. CURVE EFR-2
PI STA. = 25+68.57
Δ = 45° 16' 03" (RT)
D = 4° 24' 27"
R = 1,300.00'
T = 542.04'
L = 1,027.09'
E = 108.48'
e = N/C
T.R. = N/A
S.E. RUN = N/A
P.C. STA. = 20+26.54
P.T. STA. = 30+53.62



PARCEL NO.	OWNER	TOTAL HOLDING	R.O.W. REQUIRED	PREVIOUSLY DEDICATED	REMAINDER	EASEMENTS		EASEMENT PURPOSE	PERMANENT TAX NUMBER	PROPERTY ACQUIRED BY
						TEMP	PERM			
8016192	THE BANK OF EDWARDSVILLE, TRUSTEE TRUST NO. 6103 OF JANUARY 8, 1990 MA-2219	118.4215 AC	0.4590 AC 19,996 SF		117.9624 AC	0.0090 AC 390 SF		SHAPING & GRADING	09-1-22-08-00-000-002.T01 09-1-22-08-00-000-002.T00	