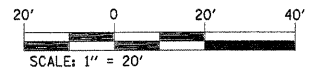
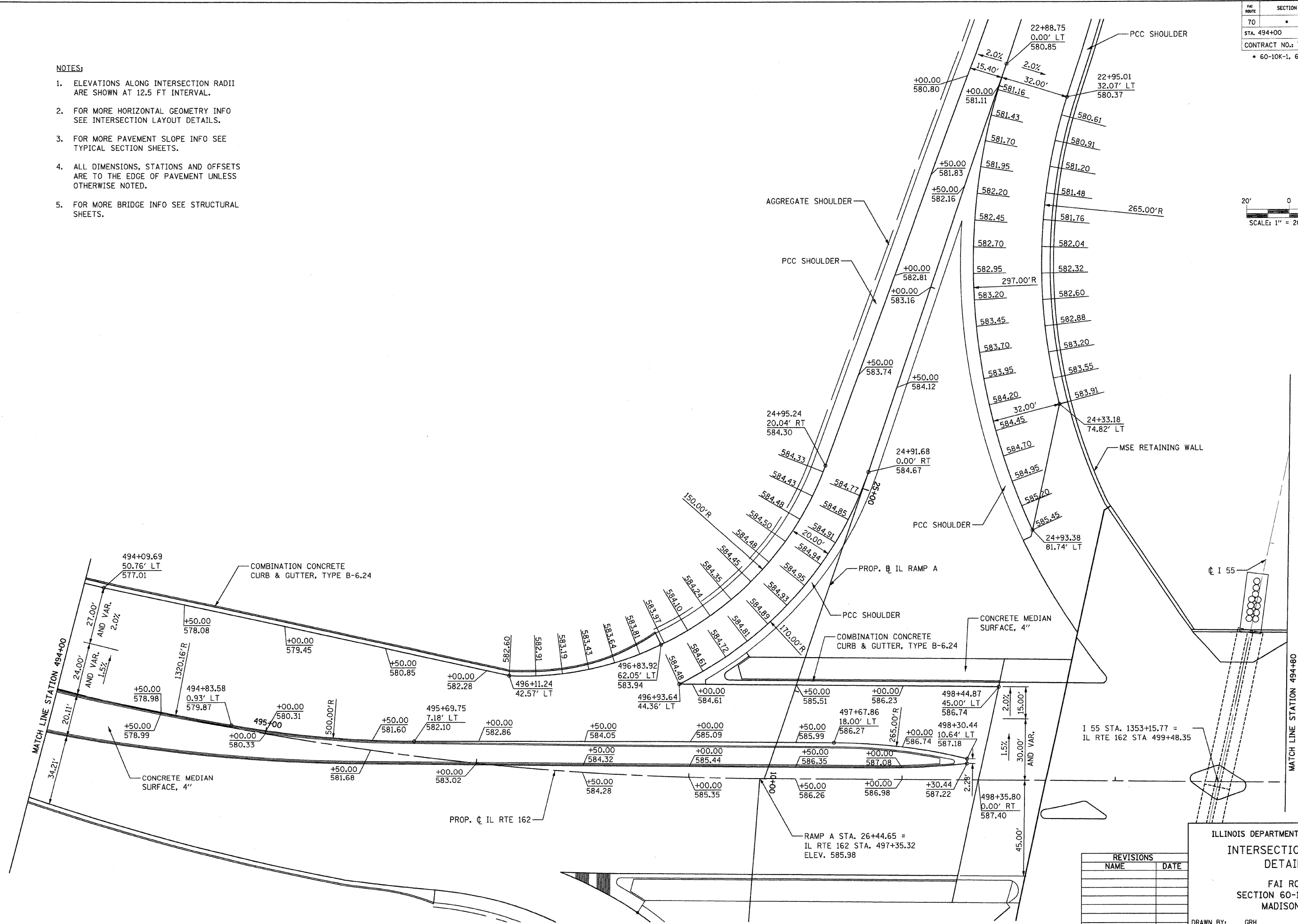


FAI ROUTE	SECTION	COUNTY	TOTAL SHEETS	SHEET NO.
70		MADISON	420	136
STA. 494+00		TO STA. 499+80		
CONTRACT NO.: 76709				
• 60-10K-1, 60-10HB				



- NOTES:**
- ELEVATIONS ALONG INTERSECTION RADII ARE SHOWN AT 12.5 FT INTERVAL.
 - FOR MORE HORIZONTAL GEOMETRY INFO SEE INTERSECTION LAYOUT DETAILS.
 - FOR MORE PAVEMENT SLOPE INFO SEE TYPICAL SECTION SHEETS.
 - ALL DIMENSIONS, STATIONS AND OFFSETS ARE TO THE EDGE OF PAVEMENT UNLESS OTHERWISE NOTED.
 - FOR MORE BRIDGE INFO SEE STRUCTURAL SHEETS.

PLAN	DATE
SURVEYED	BY
ALIGNED	CHECKED
RT. OF WAY	CHECKED
NO. _____	FILE NAME



REVISIONS	
NAME	DATE

ILLINOIS DEPARTMENT OF TRANSPORTATION
**INTERSECTION ELEVATION
 DETAILS - 4**
 FAI ROUTE 70
 SECTION 60-10K-1, 60-10HB
 MADISON COUNTY

DRAWN BY: GRH
 PLOT DATE: DATE-TIME

DATE-TIME: 2/26/2014 10:40:00
 REF: 236c020.dgn
 REF: 236c020.dgn