

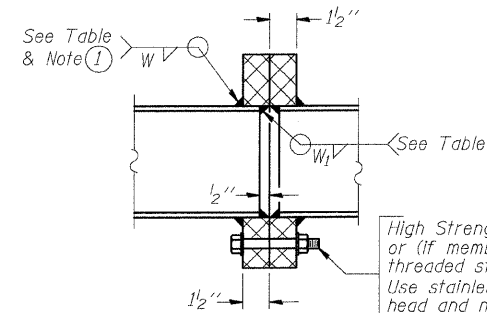
STATE OF ILLINOIS
DEPARTMENT OF TRANSPORTATION

ROUTE NO.	SECTION	COUNTY	TOTAL SHEETS	SHEET NO.
70	*	MADISON	420	168
FED. ROAD DIST. NO. B		ILLINOIS	FED. AID PROJECT	
* 60-10K-1, 60-10HB				

SHEET NO. -
- SHEETS

TRUSS UNIT TABLE

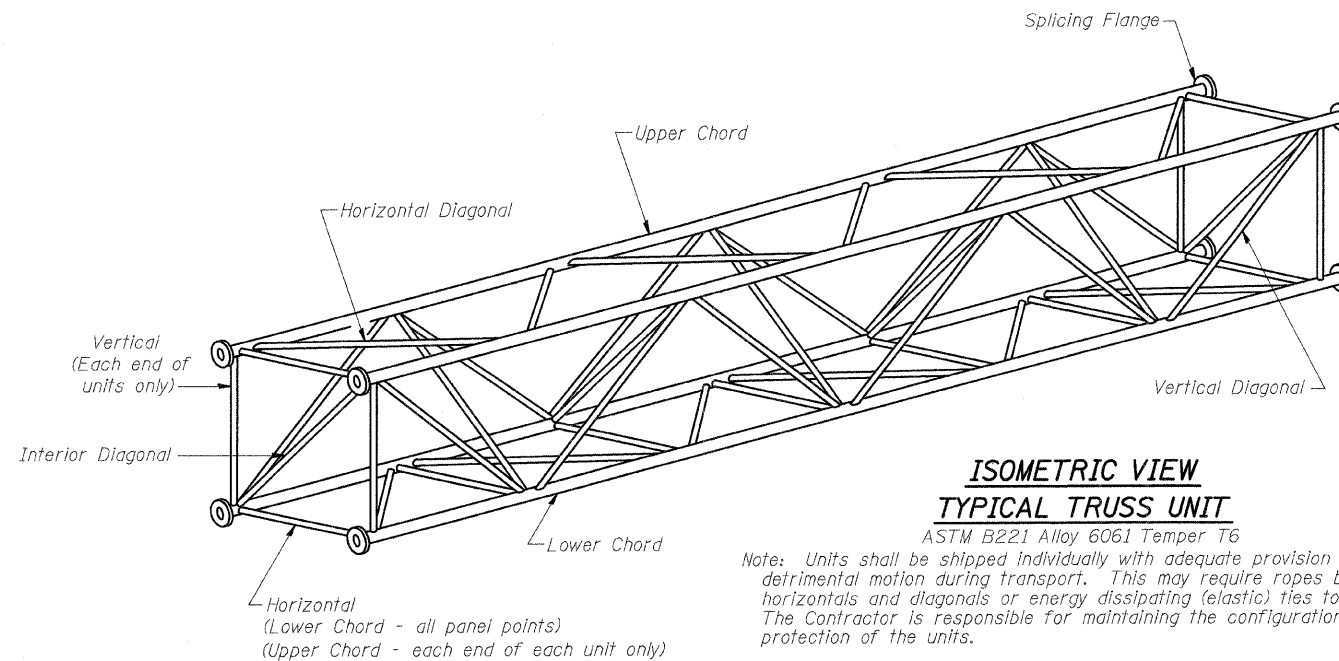
Structure Number	Station	Design Truss Type	Exterior Units (2)			Interior Unit				Upper & Lower Chord		Verticals; Horizontals; Vertical, Horizontal, and Interior Diagonals				Camber at Midspan	Splicing Flange					
			No. Panels per Unit	Unit Lgth.(L _u)	Panel Lgth.(P)	No. Req'd.	No. Panels per Unit	Unit Lgth.(L _i)	Panel Lgth.(P)	O.D.	Wall	O.D.	Wall	Bolts			Weld Sizes		A	B		
														No./Splice	Dia.		W	W ₁				
8S0601070L018.3	1337+90	I-A	8	37'-2 1/2"	4'-5"	-	-	-	-	5"	5/16"	2 1/2"	5/16"	1 1/4"	6	1"	5/16"	1/4"	8 3/4"	11 3/4"		
8S0601070R017.7	1368+72	I-A	7	36'-10 1/2"	5'-0"	-	-	-	-	5"	5/16"	2 1/2"	5/16"	1 1/4"	6	1"	5/16"	1/4"	8 3/4"	11 3/4"		



SECTION B-B

High Strength bolts with locknuts or (if members interfere) threaded studs with 2 locknuts. Use stainless steel washers under head and nut. See table.

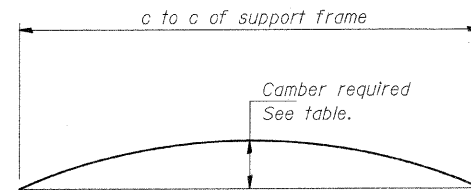
(1) Splicing Flanges shall be attached to each truss unit with the truss shop assembled to camber shown. Truss units shall be in proper alignment and flange surfaces shall be shop bolted into full contact before welding. Sufficient external welds or tacks shall be made to secure flanges until remaining welds are made after disassembly. Adjacent flanges shall be "match marked" to insure proper field assembly.



**ISOMETRIC VIEW
TYPICAL TRUSS UNIT**

ASTM B221 Alloy 6061 Temper T6

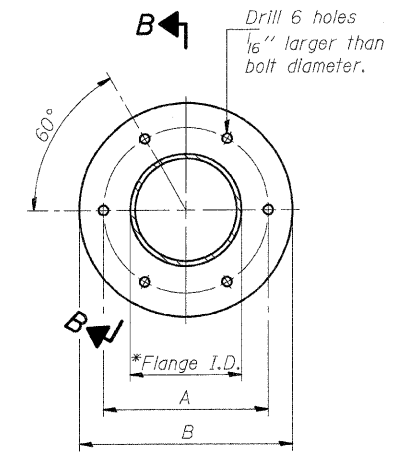
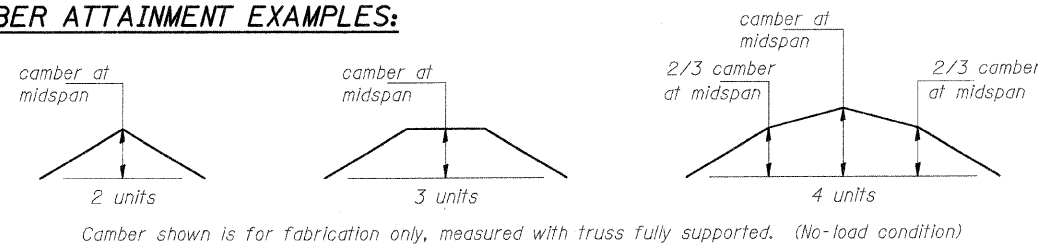
Note: Units shall be shipped individually with adequate provision to prevent detrimental motion during transport. This may require ropes between horizontals and diagonals or energy dissipating (elastic) ties to the vehicle. The Contractor is responsible for maintaining the configuration and protection of the units.



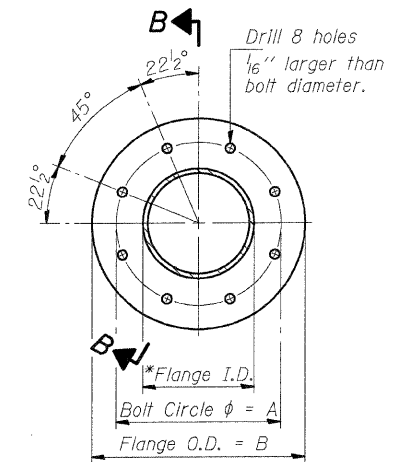
CAMBER DIAGRAM

Camber curve shown is theoretical. Actual camber attained by slope changes at splices between units.

CAMBER ATTAINMENT EXAMPLES:



TRUSS TYPES I-A, II-A, & III-A



TRUSS TYPES II-A & III-A

SPLICING FLANGES

ASTM B221, Alloy 6061-T6
or ASTM B209, Alloy 6061-T651

*To fit O.D. of Chord with maximum gap of 1/16".

NUMBER	REVISION	DATE

DESIGNED	-	BTO
CHECKED	-	JAN
DRAWN	-	BTO
CHECKED	-	JAN

EXAMINED	-	20
PASSED	-	ENGINEER OF STRUCTURAL SERVICES
	-	ENGINEER OF BRIDGES AND STRUCTURES

**OVERHEAD SIGN STRUCTURES
ALUMINUM TRUSS DETAILS
FOR TRUSS TYPES I-A, II-A and III-A**

FAI ROUTE 70
SECTION 60-10K-1, 60-10-4HB
MADISON COUNTY