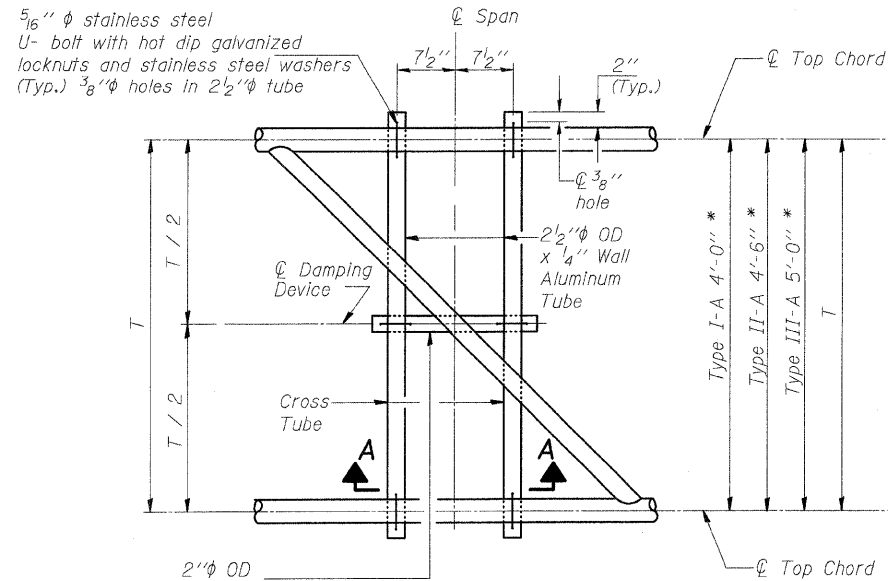


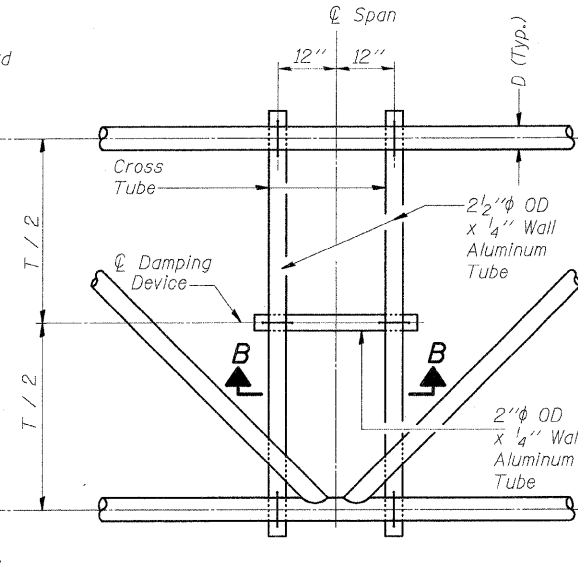
STATE OF ILLINOIS  
DEPARTMENT OF TRANSPORTATION

\* Center of horizontal to center of splice dimension may vary. Verify before drilling holes in mounting tube.

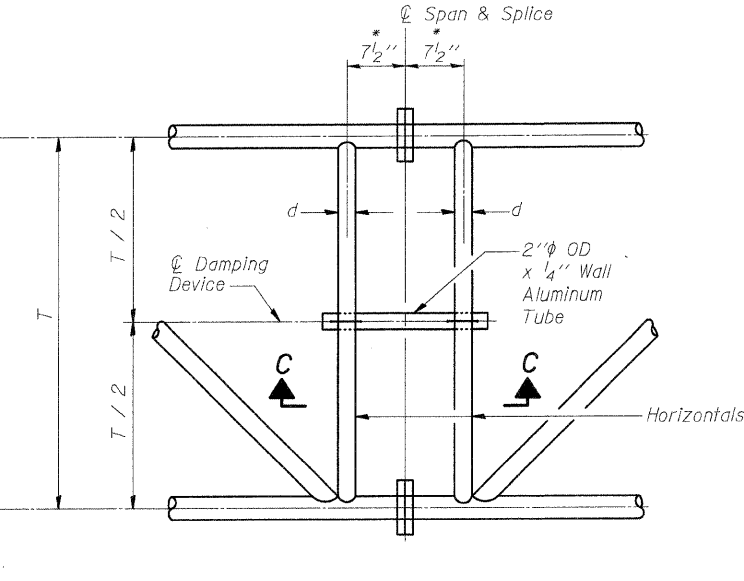
ROUTE NO.	SECTION	COUNTY	TOTAL SHEETS	SHEET NO.	SHEET NO.
70	*	MADISON	420	170	- SHEETS
FED. ROAD DIST. NO. 8 ILLINOIS FED. AID PROJECT -					
• 60-10K-1, 60-10HB					



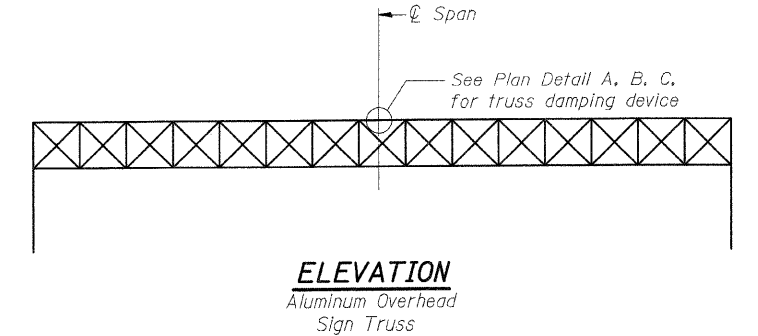
**PLAN DETAIL "A"**  
Span between panel points



**PLAN DETAIL "B"**  
Span at panel point

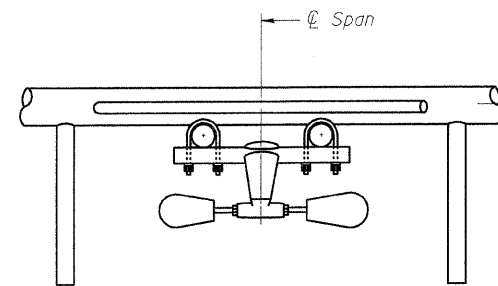


**PLAN DETAIL "C"**  
Span at chord splice

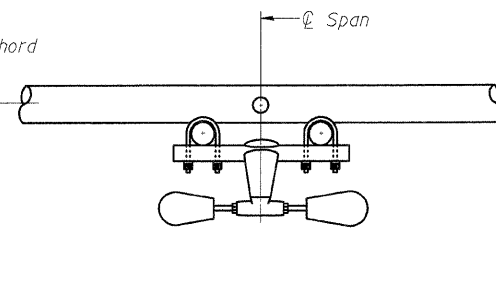


**NOTES**

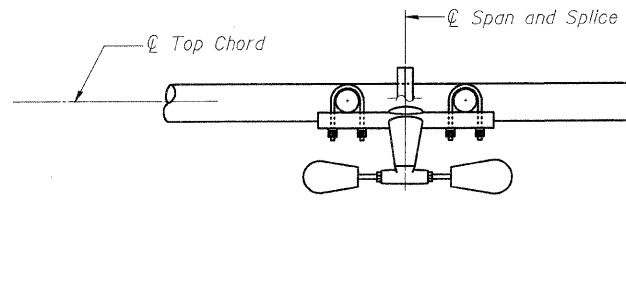
- Damper: One damper per truss. (31 lbs. Stockbridge-Type Aluminum) Cost included in "Overhead Sign Structure..."
- Materials: Aluminum tubes shall be ASTM B221 alloy 6061 temper T6. Cost included in "Overhead Sign Structure..."



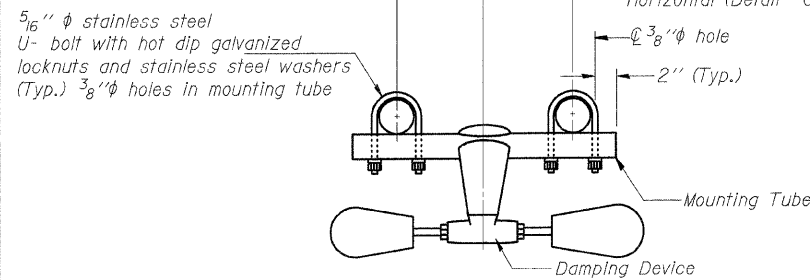
**SECTION A-A**



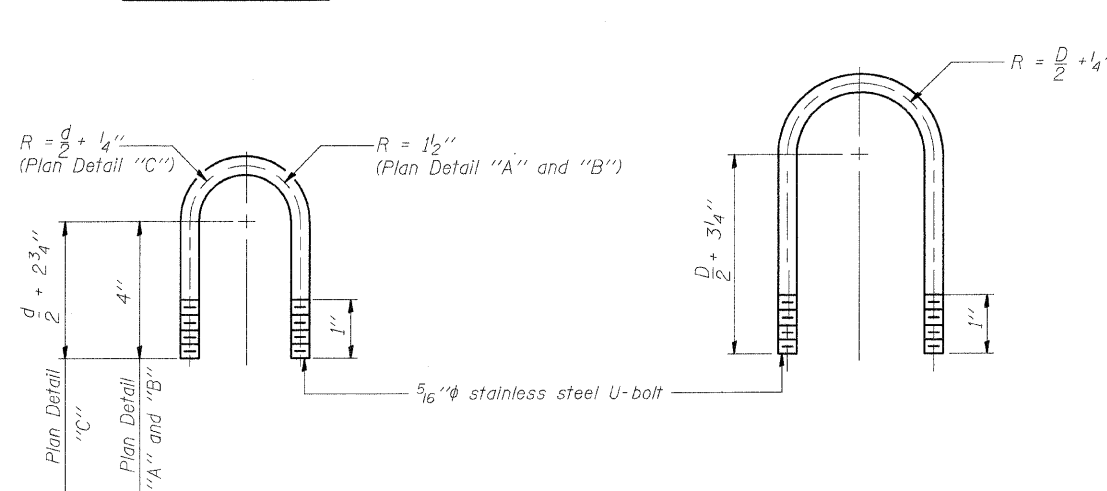
**SECTION B-B**



**SECTION C-C**



**TRUSS DAMPING DEVICE CONNECTION DETAIL**  
(Typical)



**DAMPING DEVICE MOUNTING TUBE U-BOLT DETAIL**  
(Typical)

**TOP CHORD TO CROSS TUBE U-BOLT DETAIL**  
(Typical - Detail "A" and "B")

DESIGNED	-	BTO
CHECKED	-	JAN
DRAWN	-	BTO
CHECKED	-	JAN

EXAMINED	20
PASSED	ENGINEER OF STRUCTURAL SERVICES
	ENGINEER OF BRIDGES AND STRUCTURES

**OVERHEAD SIGN STRUCTURE DAMPING DEVICE**

FAI ROUTE 70  
SECTION 60-10K-1, 60-10-4HB  
MADISON COUNTY