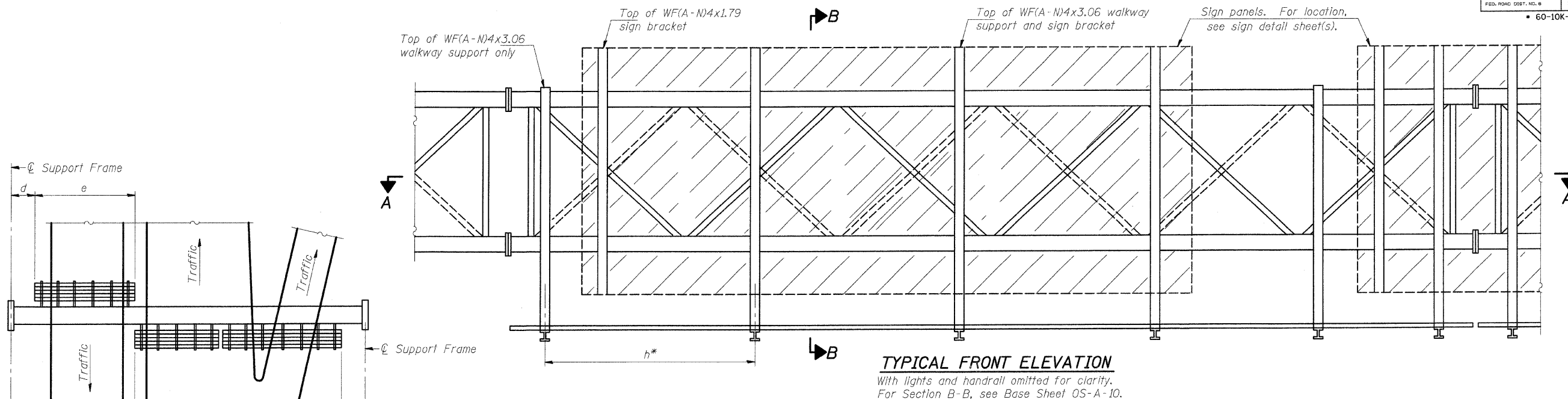
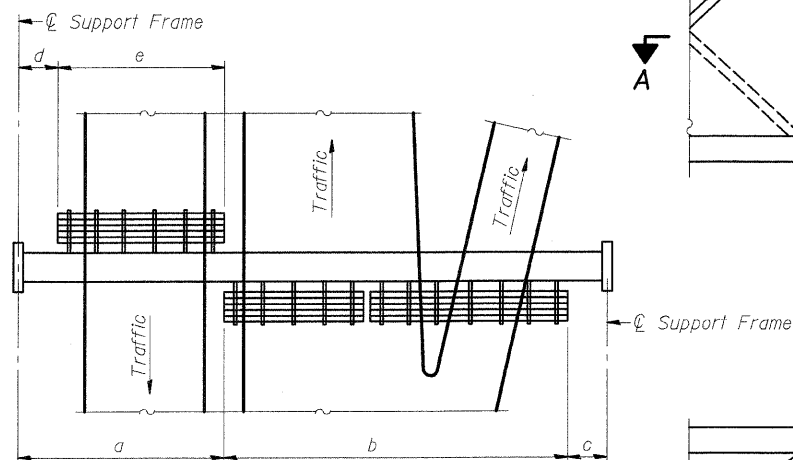


STATE OF ILLINOIS  
DEPARTMENT OF TRANSPORTATION

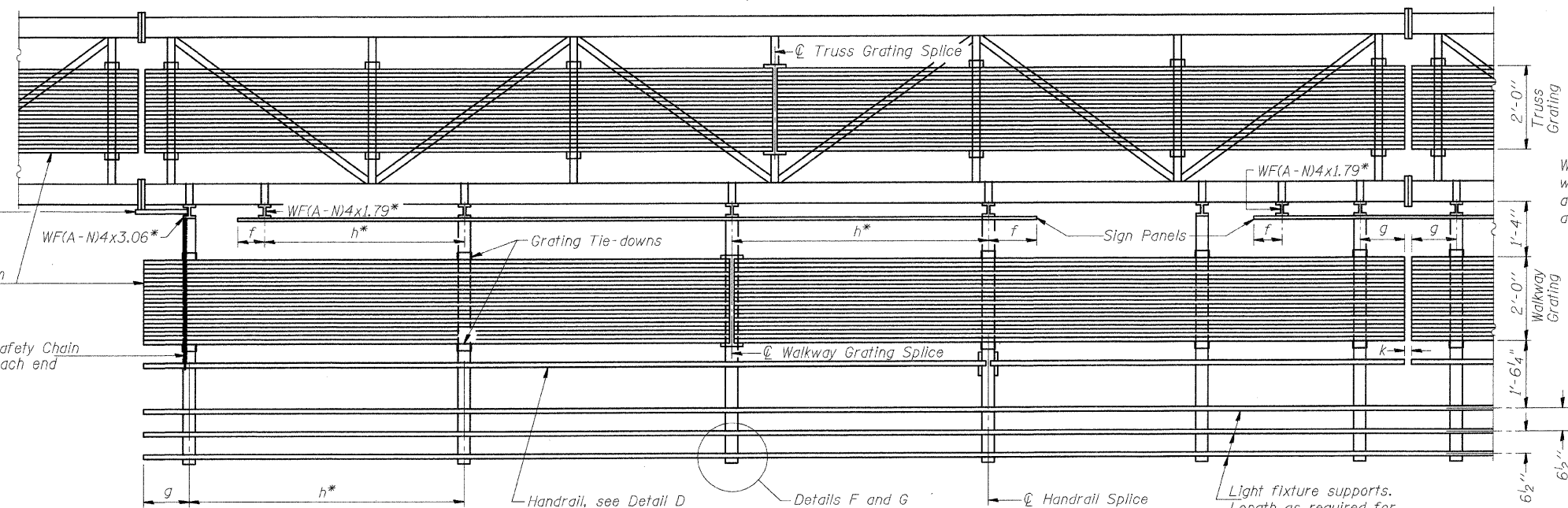
ROUTE NO.	SECTION	COUNTY	TOTAL SHEETS	SHEET NO.	SHEET NO.
70	*	MADISON	420	173	- SHEETS
FED. ROAD DIST. NO. 6		ILLINOIS	FED. AID PROJECT		
60-10K-1, 60-10HB					



**TYPICAL FRONT ELEVATION**  
With lights and handrail omitted for clarity.  
For Section B-B, see Base Sheet OS-A-10.



**PLAN WALKWAY AND HANDRAIL SKETCH**  
(Road plan beneath truss varies)



**SECTION A-A**

Handrail and walkway shall span a minimum of three brackets between splices and/or gap joints. Place all sign and walkway brackets as close to panel points as practical. Grating, handrail and light support splices placed as needed.

Truss grating to facilitate inspection shall run full length (center to center of support frames) ±12" on overhead trusses. Cost of truss grating is included in "Overhead Sign Structure".

**BRACKET TABLE**

Sign Width		Number Brackets Required
Greater Than	Less Than or Equal To	
	8'-0"	2
8'-0"	14'-0"	3
14'-0"	20'-0"	4
20'-0"	26'-0"	5
26'-0"	32'-0"	6

\*\*Alternate angle for safety chain attachment

Standard Aluminum Grating, see Details T and W

Safety Chain Each end

Walkway and Truss Grating width dimensions are nominal and may vary ±1/2" based on available standard widths.

Notes: \*Space walkway brackets WF(A-N)4x3.06 and sign brackets WF(A-N)4x1.79 for efficiency and within limits shown:

- f = 12" maximum, 4" minimum (End of sign to center of nearest bracket)
- g = 12" maximum, 4" minimum (End of walkway grating to center of nearest support bracket)
- h = 6'-0" maximum (center to center of sign and/or walkway support brackets, WF(A-N)4x1.79 or WF(A-N)4x3.06)
- k = 2" maximum gap between adjacent walkway grating sections and handrail ends

\*\*If walkway bracket at safety chain location is behind sign, add angle to bracket, see Alternate Safety Chain Attachment on Base Sheet OS-A-11.

For Details T and W, Section B-B and Grating Splice Details, see Base Sheet OS-A-10.  
For Details D, F, G and P and Handrail Splice Details, see Base Sheet OS-A-11.

Structure Number	Station	a	b	c	d	e	Walkway Grating and Handrail Lengths
8S0601070L018.3	1337+90	13'-4"	52'-6"	7'-2"	-	-	52'-6"
8S0601070R017.7	1368+72	14'-4"	51'-0"	6'-8"	-	-	51'-0"

**OVERHEAD SIGN STRUCTURES  
ALUMINUM WALKWAY DETAILS**

FAI ROUTE 70  
SECTION 60-10K-1, 60-10-4HB  
MADISON COUNTY

DESIGNED - BTO	EXAMINED	20
CHECKED - JAN	ENGINEER OF STRUCTURAL SERVICES	
DRAWN - BTO	PASSED	
CHECKED - JAN	ENGINEER OF BRIDGES AND STRUCTURES	

NUMBER	REVISION	DATE