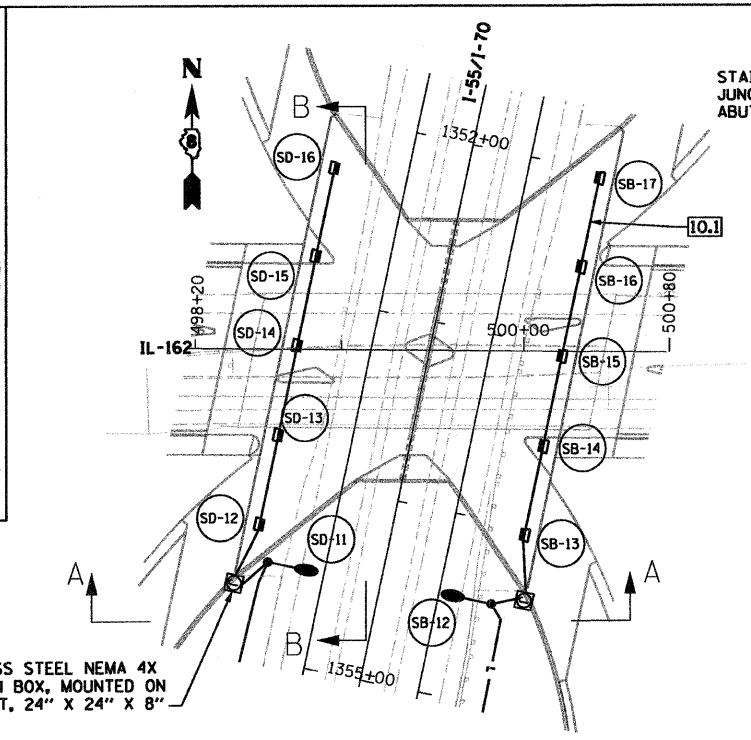
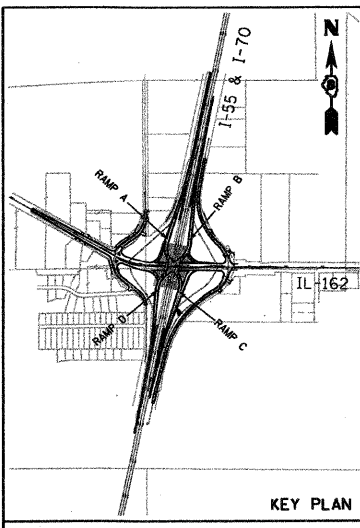
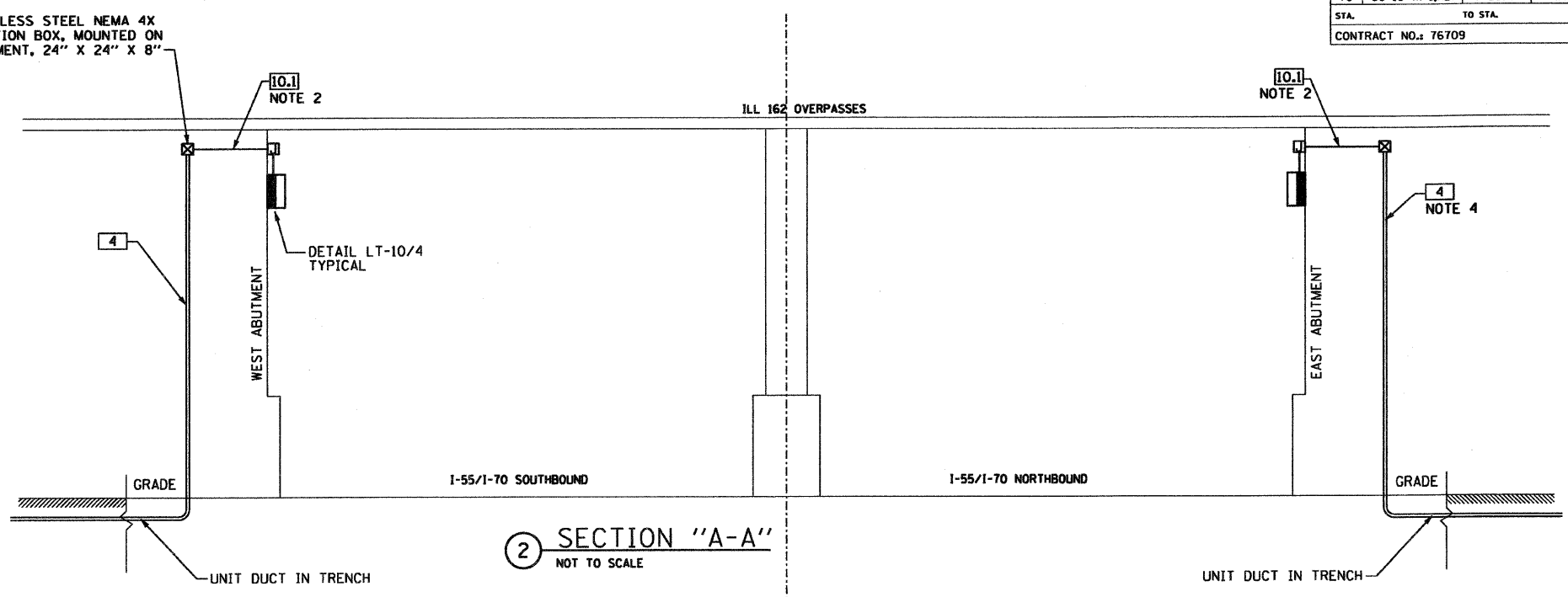
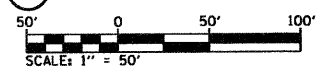


SECTION	COUNTY	TOTAL SHEETS	SHEET NO.
70 60-10 (K-1,HB)	MADISON	420	187
CONTRACT NO.: 76709			

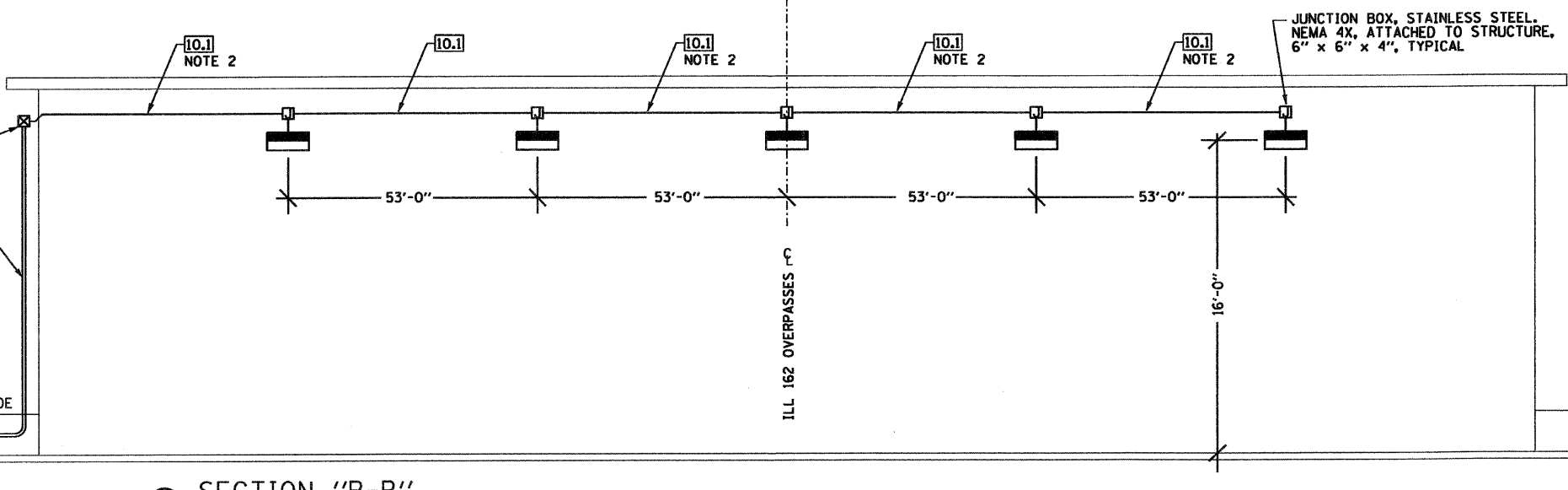
DATE	BY	REVISION



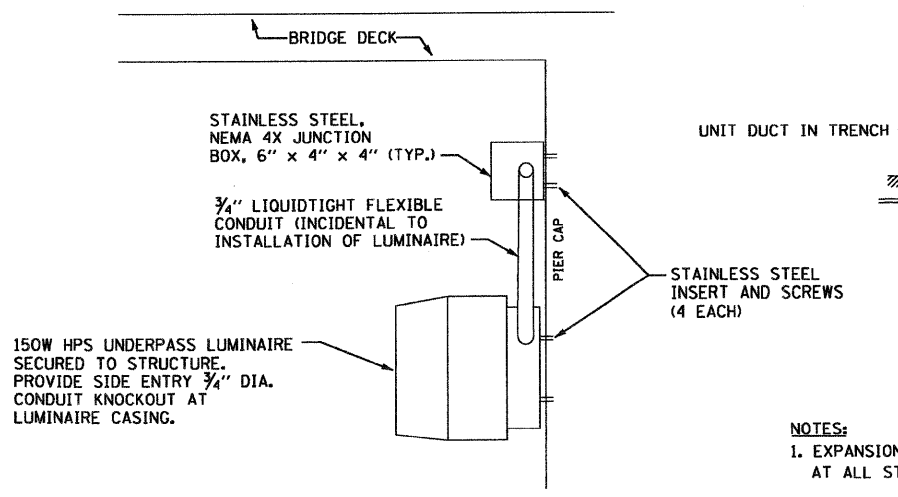
1 PROPOSED UNDERPASS LIGHTING PLAN



2 SECTION "A-A"  
NOT TO SCALE



3 SECTION "B-B"  
NOT TO SCALE



4 LUMINAIRE MOUNTING  
NOT TO SCALE

- NOTES:**
- EXPANSION FITTINGS SHALL BE FURNISHED AND INSTALLED IN CONDUIT RUNS AT ALL STRUCTURAL EXPANSION JOINTS.
  - PVC COATED CONDUIT CLAMP AND CLAMP BACK ON 5'-0" CENTERS (TYPICAL). ATTACH WITH EXPANSION ANCHORS (MIN. 2" LONG). EXPANSION ANCHORS SHALL BE HOT DIPPED GALVANIZED AS MADE BY PARTABOLT KWIK-BOLT OR WEJ-IT, OR APPROVED EQUAL.
  - EXPANSION FITTINGS AT WALL JOINTS SHALL BE O.Z. GEDNEY TYPE DX EXPANSION-DEFLECTION FITTINGS OR APPROVED EQUAL ALLOWING A MOVEMENT OF 3/4" IN ALL DIRECTIONS AND A DEFLECTION OF 30 DEG. FROM NORMAL IN ALL DIRECTIONS.
  - 3" GALVANIZED RIGID CONDUIT ATTACHED TO STRUCTURE FROM ~~CAST IRON~~ <sup>STAINLESS STEEL</sup> JUNCTION BOX TO GRADE.

REVISIONS	
NAME	DATE

ILLINOIS DEPARTMENT OF TRANSPORTATION  
**PROPOSED UNDERPASS LIGHTING PLAN, ELEVATION, & NOTES**

FAI ROUTE 70  
 SECTION 60-10K-1, 60-10HB  
 MADISON COUNTY

DRAWN BY: RPJ  
 CHECKED BY: A. OSHANA, P.E.

XXXXXX - IDOT IL 162 over I-55/70 revisions  
 236-LT-10 - Underpass.d  
 1/28/2009 1:52:00 PM  
 Robert Swanson

LT-10