

BENCH MARK

CP#35, Iron Pin w/Cap, Sta. 502+30.81, 37.37' Rt, El. 582.812

EXISTING STRUCTURE

Structure S.N. 060-0139 was built in 1956 as U. S. Route 40 Bypass over F. A. Route 190 (U. S. Route 66). It was widened and the deck reconstructed in 1978. The four span structure was built on concrete piles at the abutments and timber piles at the piers. The composite reinforced concrete deck is supported by continuous steel beams that are 27" deep at the fascia and 30" deep elsewhere. The back to back abutment length is 194'-0" and the deck is 75'-2" out to out.

During construction of the new structure, staged construction will be utilized to maintain one lane of traffic in each direction.

No salvage.

Bk. of W. Abut.
IL 162 Sta. 498+81.54 offset 80.65' Lt.
Ramp A Sta. 25+22.85 offset 114.23' Lt.

© Brg. W. Abut.
Sta. 498+68.35
El. 587.70

STATION 499+48.35
BUILT 200_ BY
STATE OF ILLINOIS
F.A.I. RT. 70 SEC. 60-10HB
LOADING HS20
STR. NO. 060-0338

NAME PLATE

See Std. 515001

NOTE: For Name Plate location, see sht. S-59.

LOADING HS20

Allow 50 lbs/ft² future wearing surface

DESIGN SPECIFICATION

2002 AASHTO Std. Spec, 17th edition

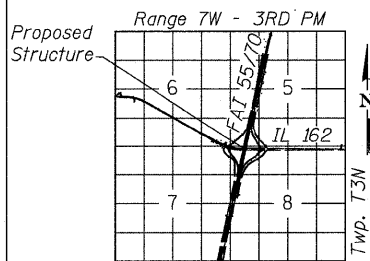
DESIGN STRESSES

NEW CONSTRUCTION

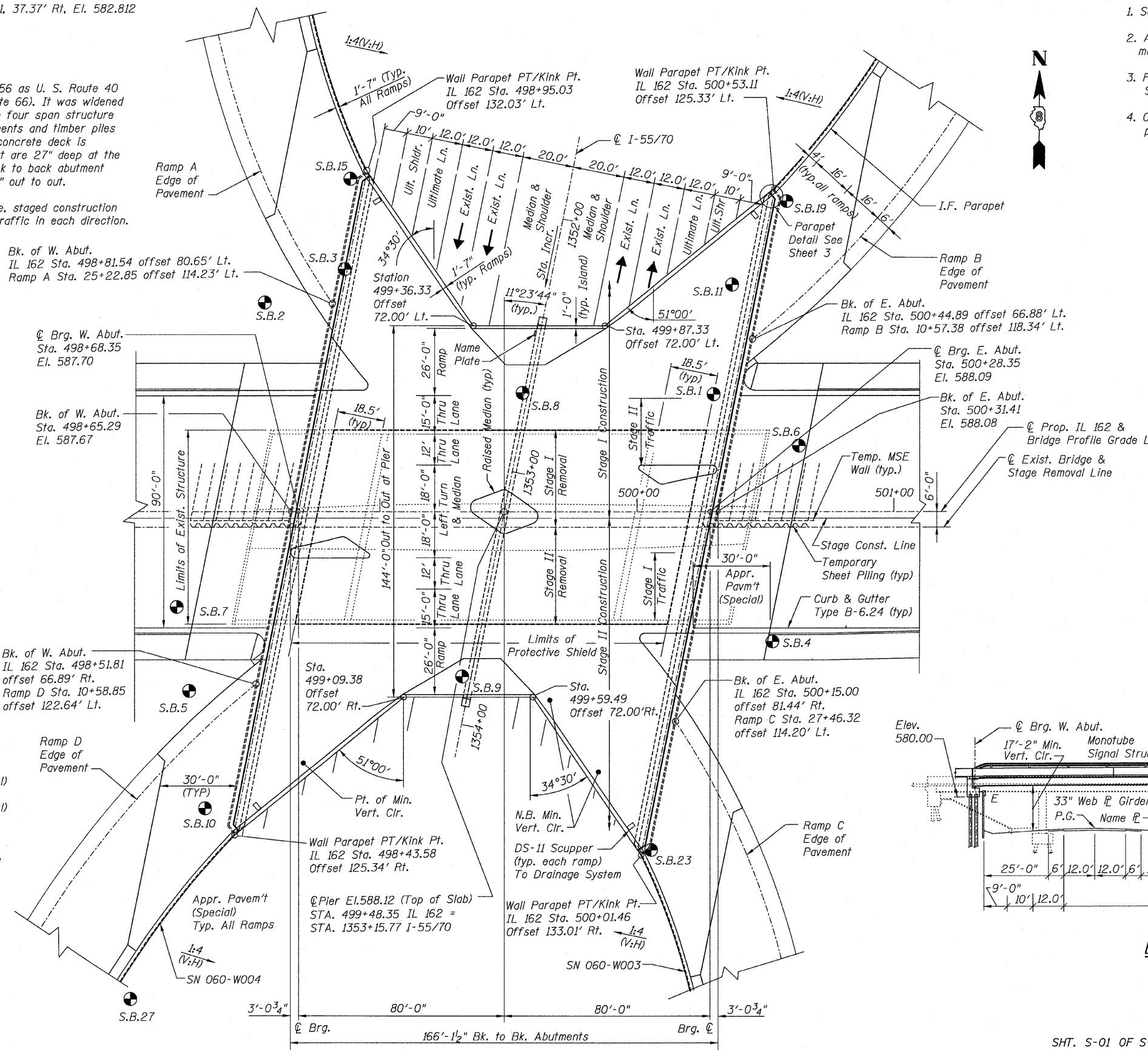
f'c = 3,500 psi (concrete)
fy = 60,000 psi (reinforcement)
fy = 36,000 psi (AASHTO M-270, Gr.36 struc. steel)
fy = 50,000 psi (AASHTO M-270, Gr.50 struc. steel)

SEISMIC DATA

Seismic Performance Category (SPC) = B
Bedrock Acceleration Coefficient (A) = .12
Site Coefficient (S) = 1.5



LOCATION SKETCH



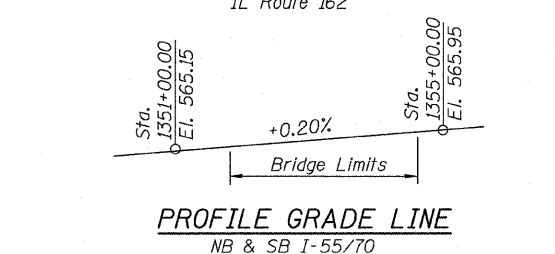
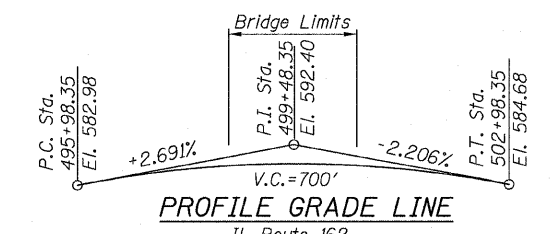
PLAN

NOTES:

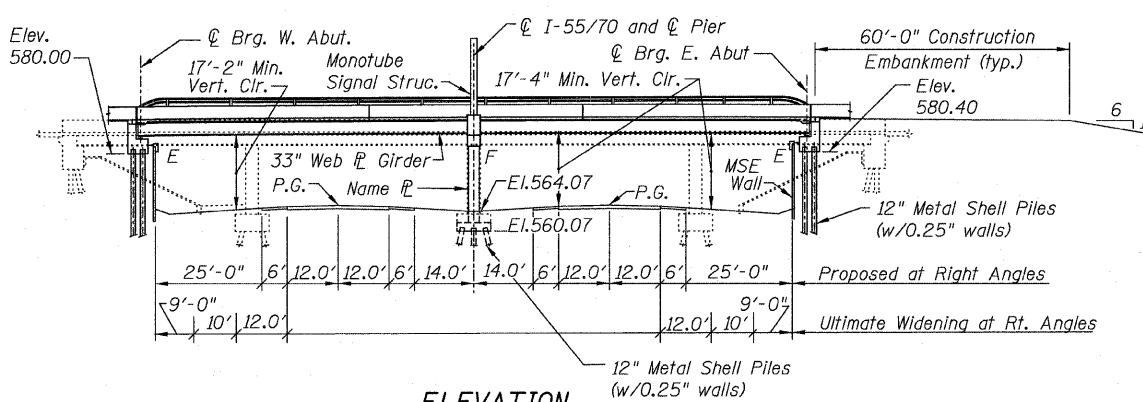
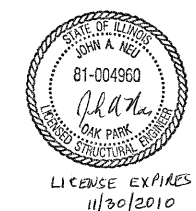
- See General Notes on Sht. S-03.
- All existing utilities attached to bridge shall be maintained during and after construction.
- For ramp and abutment walls, see Dwg. for S.N. 060-W006 (east) and 060-W004 (west).
- Offsets are measured from © IL Rt. 162 to back of parapet.

F.A.I. RTE.	SECTION	COUNTY	TOTAL SHEETS	SHEET NO.
70	60-10K-1,60-10HB	MADISON	420	219
STA.	TO STA.			
FED. ROAD DIST. NO.	ILLINOIS	FED. AID PROJECT		

CONTRACT NO. 76709



APPROVED
FOR STRUCTURAL ADEQUACY ONLY
Repha E. Anderson
ENGINEER OF BRIDGES AND STRUCTURES



ELEVATION

REVISIONS	
NAME	DATE

SHT. S-01 OF S-68

STV Incorporated
Engineers/Architects/Planners/Construction Managers
210 W. Monroe Street, Suite 1650
Chicago, IL 60606-3015
312.553-0655, FAX 312.553-0661

ILLINOIS DEPARTMENT OF TRANSPORTATION
IL ROUTE 162 OVER I-55/70 IN TROY
F.A.I. ROUTE 70 SECTION 60-10K-1, 60-10HB
MADISON COUNTY STATION 499+48.35
STRUCTURE NO. 060-0338

GENERAL PLAN
DESIGNED: AWH
CHECKED: JAN
DATE: 03/06

DRAWN: BTO
CHECKED: AWH