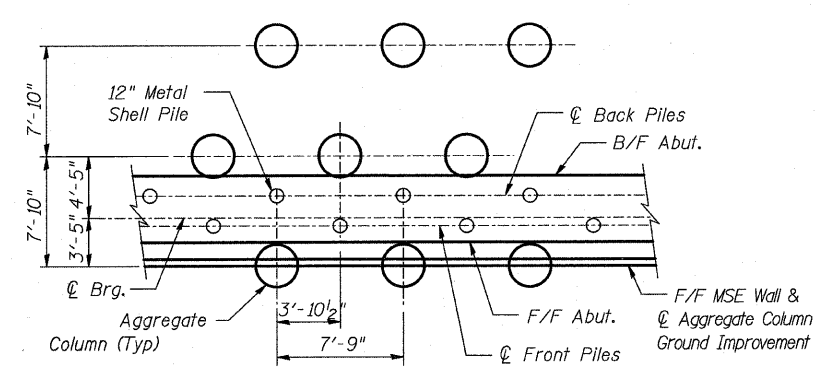


**SECTION AT ABUTMENT**  
(Dimensions @ Rt. L's)



**TYPICAL AGGREGATE COLUMN GROUND IMPROVEMENT/PILE LAYOUT**

Contractor shall alternate aggregate column and pile spacing as shown.

- NOTES:**
1. For Abutment pile layout, see Shts. S-53, S-54, S-56, & S-57.
  2. For Pier Pile layout, see Shts. S-59 & S-60.
  3. Details for Aggregate Column Ground Improvement and Mechanically Stabilized Earth (MSE) walls are shown on drawings for Structure No. 060-W004 and 060-W006.
  4. Drill Aggregate Columns before driving piles.

REVISIONS	
NAME	DATE

ILLINOIS DEPARTMENT OF TRANSPORTATION  
 IL ROUTE 162 OVER I-55/70 IN TROY  
 F.A.I ROUTE 70 SECTION 60-10K-1, 60-10HB  
 MADISON COUNTY STATION 499+48.35  
 STRUCTURE NO. 060-0338

FOUNDATION PLAN

DESIGNED: BTO      DRAWN: BTO  
 CHECKED: AWH      CHECKED: AWH

DATE: 03/06

SHT. S-04 OF S-68

**STV Incorporated**  
 Engineers/Architects/Planners/Construction Managers  
 200 W. Monroe Street, Suite 1650  
 Chicago, IL 60606-5015  
 312/553-0655, FAX 312/553-0661