

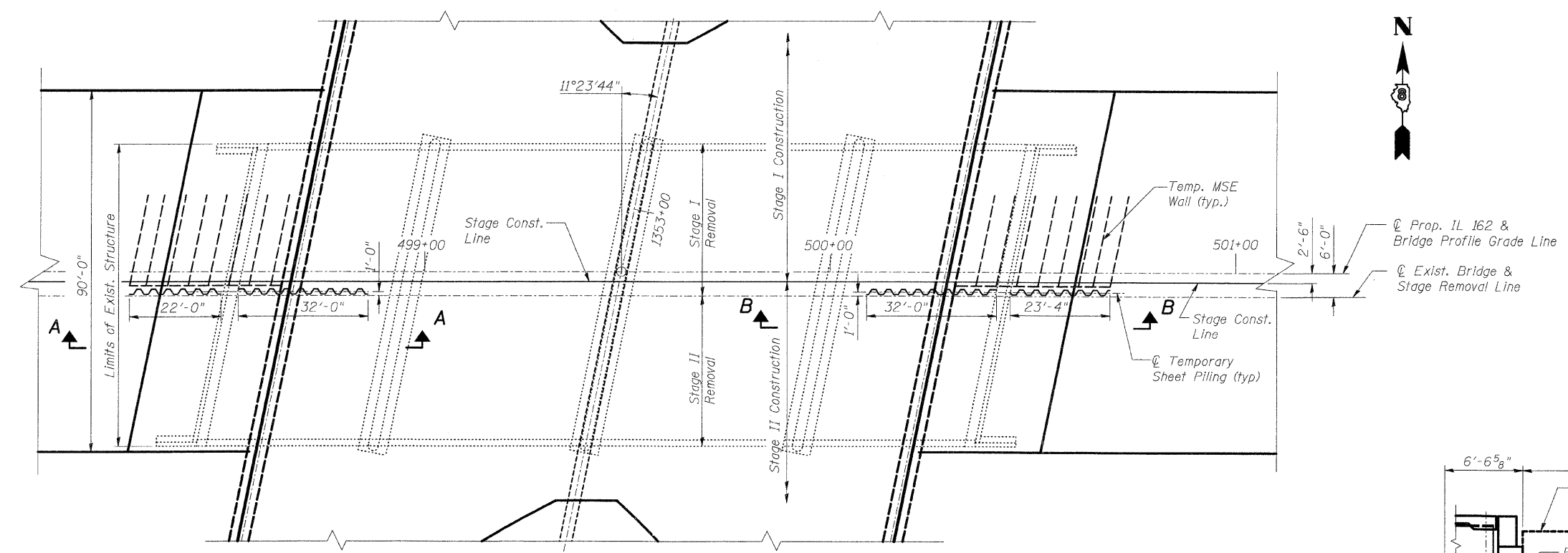
F.A.I. RTE.	SECTION	COUNTY	TOTAL SHEETS	SHEET NO.
TO 60-10K-1,60-10HB	MADISON	420	223	
STA.	TO STA.			
FED. ROAD DIST. NO.	ILLINOIS FED. AID PROJECT			
CONTRACT NO. 76709				

**BILL OF MATERIAL**

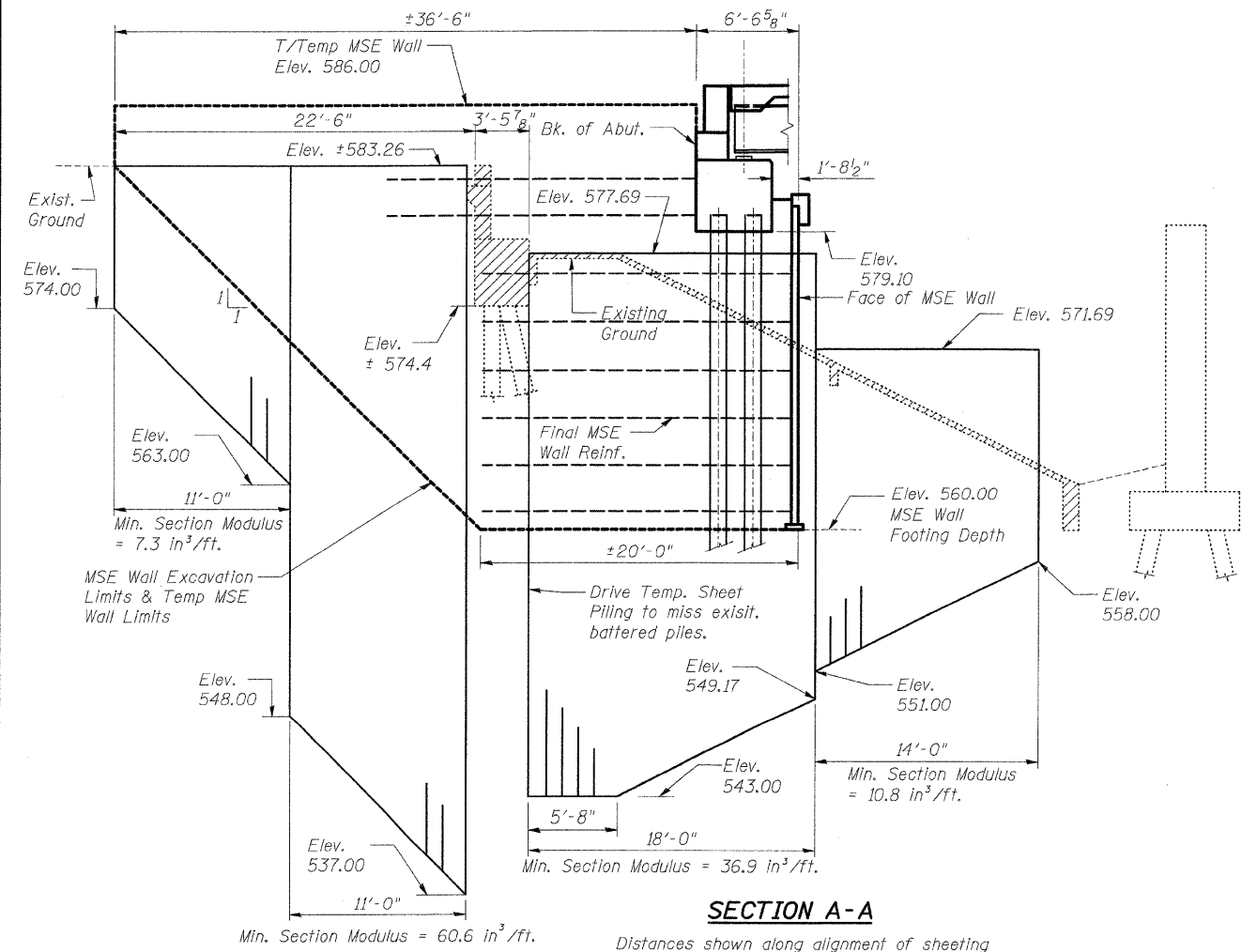
Item	Unit	Total
Temporary Sheet Piling	SQ FT	3000
Temporary Mechanically Stabilized Earth Wall	SQ FT	1600

**NOTE:**

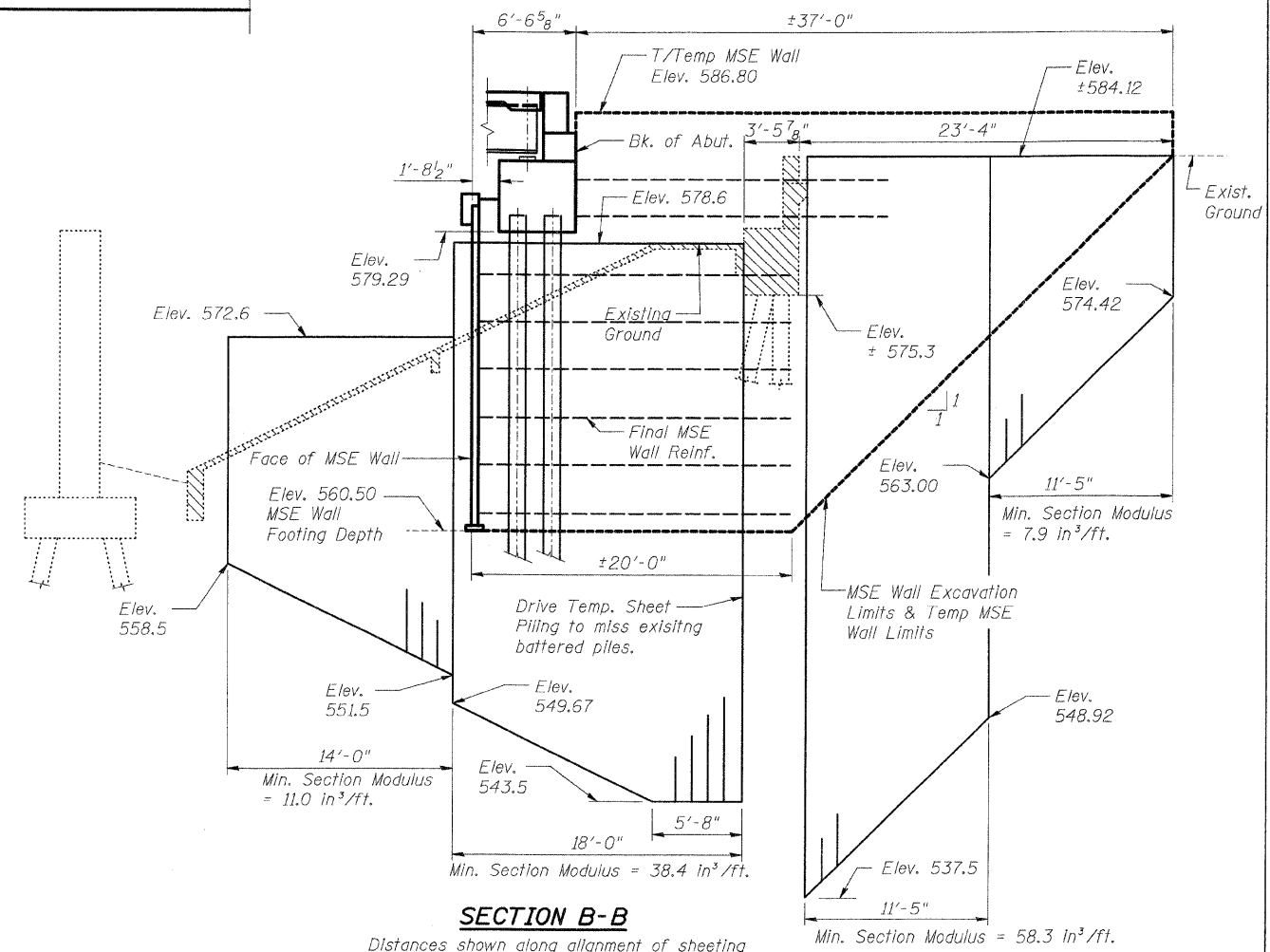
- If the Contractor chooses to alter the temporary cantilevered sheet piling design requirements shown on the plans, a design submittal including plan details and calculations will be required for review and acceptance by the engineer.
- See civil drawings for roadway soil retainage requirements.



**PLAN - TEMP. SHEET PILING & TEMP. MSE WALL**



**SECTION A-A**



**SECTION B-B**

Distances shown along alignment of sheeting

REVISIONS	
NAME	DATE

SHT. S-05 OF S-68

**STV Incorporated**  
 Engineers/Architects/Planners/Construction Managers  
 200 W. Monroe Street, Suite 1650  
 Chicago, IL 60606-0015  
 312/553-0655, FAX 312/553-0661

ILLINOIS DEPARTMENT OF TRANSPORTATION  
 IL ROUTE 162 OVER I-55/70 IN TROY  
 F.A.I. ROUTE TO SECTION 60-10K-1, 60-10HB  
 MADISON COUNTY STATION 499+48.35  
 STRUCTURE NO. 060-0338  
**TEMPORARY SHEET PILING  
 & TEMPORARY MSE WALL**

DESIGNED: BTO  
 CHECKED: AWH  
 DATE: 03/06

DRAWN: BTO  
 CHECKED: AWH