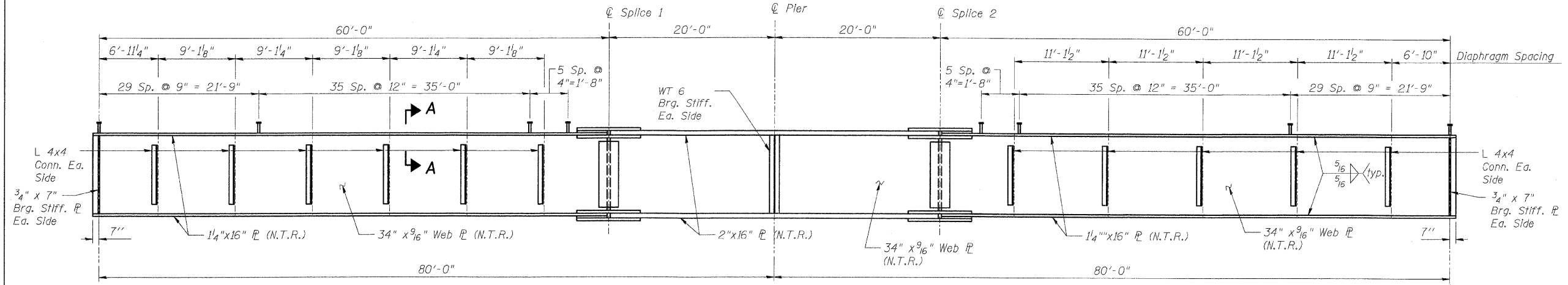
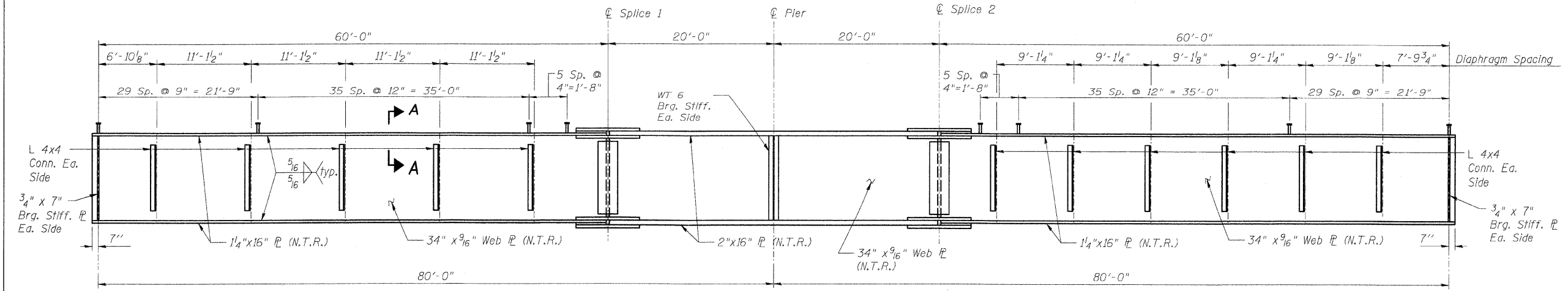


F.A.I. RTE.	SECTION	COUNTY	TOTAL SHEETS	SHEET NO.
70	60-10K-1,60-10HB	MADISON	420	260
STA.	TO STA.			
FED. ROAD DIST. NO.	ILLINOIS	FED. AID PROJECT		

CONTRACT NO. 76709



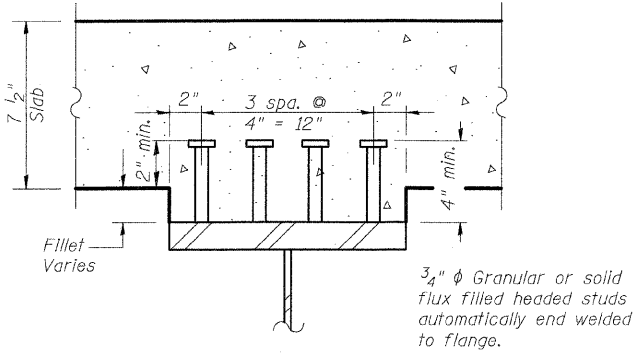
**ELEVATION GIRDER 2**  
(Looking North)



**ELEVATION GIRDER 16**  
(Looking North)

**BILL OF MATERIAL**

Item	Unit	Total
Stud Shear Connectors	Each	1120



**SECTION A-A**

**NOTES:**

1. N.T.R. denotes members to which notch toughness requirements are applicable.
2. For splice details, see Sht. S-47.
3. For Bearing Stiffener details, see Sht. S-48.
4. For Diaphragm details, see Sht. S-48 & S-49.
5. All steel shown on this sheet shall be AASHTO M270 Grade 50.

REVISIONS	
NAME	DATE

ILLINOIS DEPARTMENT OF TRANSPORTATION  
IL ROUTE 162 OVER I-55/70 IN TROY  
F.A.I ROUTE 70 SECTION 60-10K-1, 60-10HB  
MADISON COUNTY STATION 499+48.35  
STRUCTURE NO. 060-0338

ELEVATION - GIRDERS 2 & 16

DESIGNED: AWH DRAWN: BTO  
CHECKED: JAN CHECKED: JAN  
DATE: 03/06

SHT. S-42 OF S-68

**STV Incorporated**  
Engineers/Architects/Planners/Construction Managers  
200 W. Monroe Street, Suite 1650  
Chicago, IL 60606-5015  
312/253-0655, FAX 312/553-0661