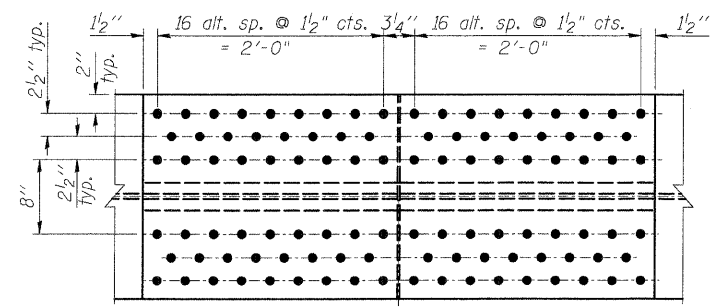
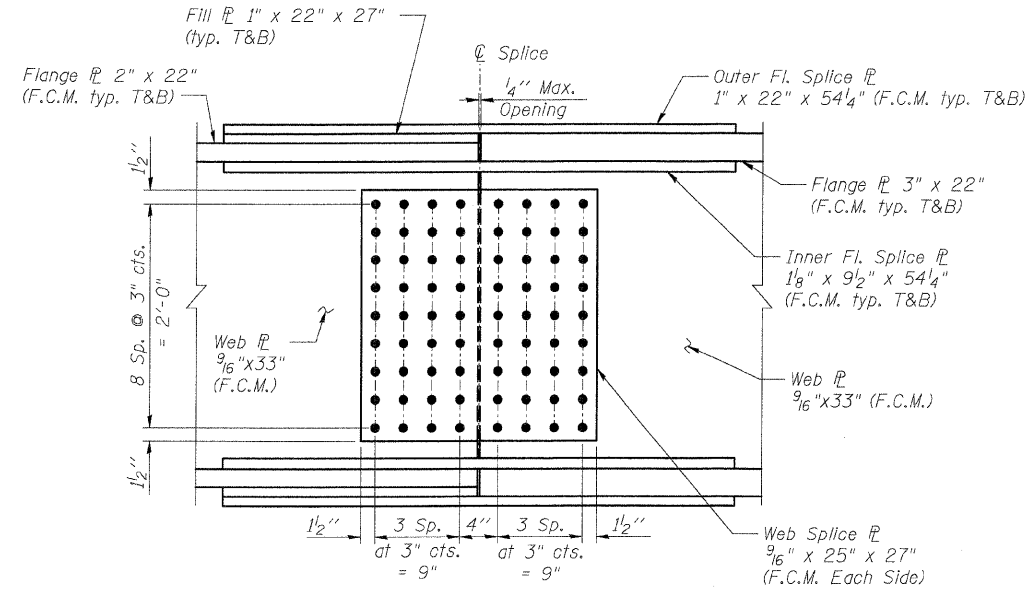


F.A.I. RTE.	SECTION	COUNTY	TOTAL SHEETS	SHEET NO.
TO 60-10K-1,60-10HB	MADISON	420	265	
STA.	TO STA.			
FED. ROAD DIST. NO.	ILLINOIS	FED. AID PROJECT		

CONTRACT NO. 76709

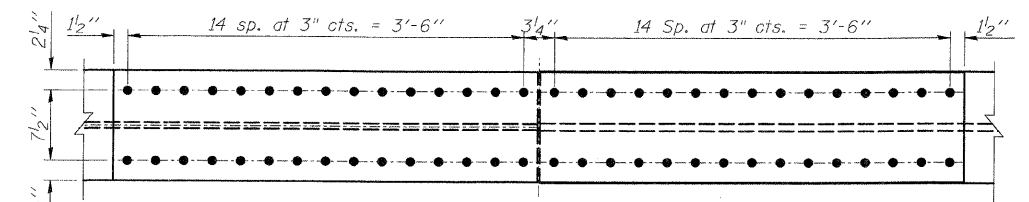


TOP VIEW

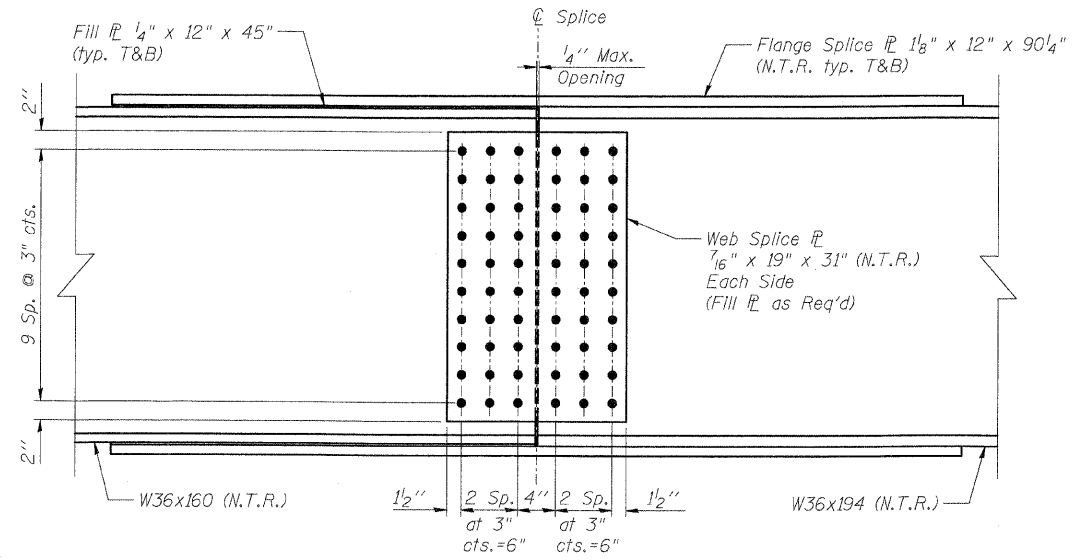


ELEVATION

SPLICE (GIRDERS 1 & 17)

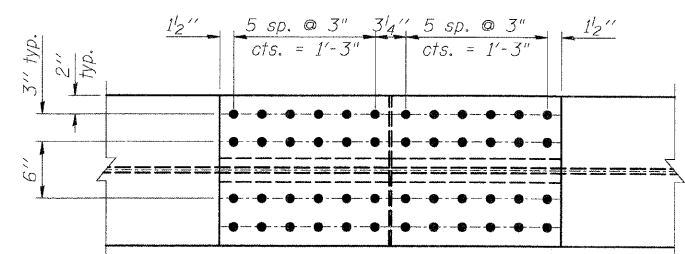


TOP VIEW

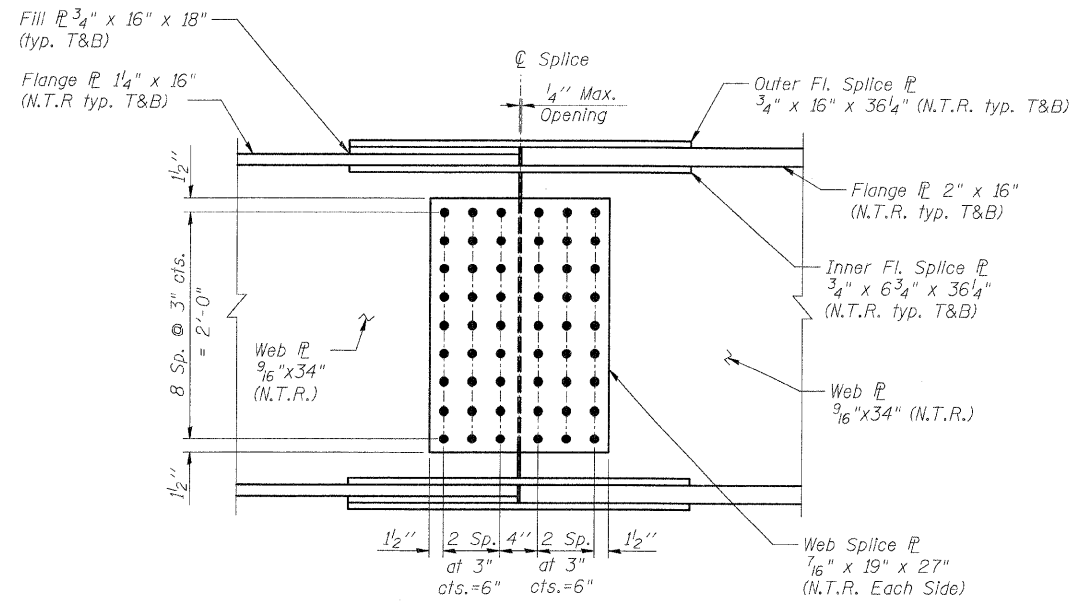


ELEVATION

SPLICE (GIRDERS 3-15)



TOP VIEW



ELEVATION

SPLICE (GIRDERS 2 & 16)

NOTES:

1. F.C.M. denotes Fracture Critical Member.
2. N.T.R. denotes members to which notch toughness requirements are applicable.
3. Structural steel for splice plates shall be AASHTO M270 Grade 50.
4. High Strength bolts shall conform to AASHTO M-164 specification. Bolts shall be 7/8" ϕ , open holes 15/16" ϕ .

REVISIONS	
NAME	DATE

ILLINOIS DEPARTMENT OF TRANSPORTATION
 IL ROUTE 162 OVER I-55/70 IN TROY
 F.A.I. ROUTE 70 SECTION 60-10K-1, 60-10HB
 MADISON COUNTY STATION 499+48.35
 STRUCTURE NO. 060-0338

STEEL DETAILS - SPLICES

DESIGNED: BTO
 CHECKED: JAN
 DATE: 03/06
 DRAWN: BTO
 CHECKED: JAN

SHT. S-47 OF S-68

STV Incorporated
 Engineers/Architects/Planners/Construction Managers
 200 W. Monroe Street, Suite 1650
 Chicago, IL 60606-5015
 312.953.9655, FAX 312.953.0661