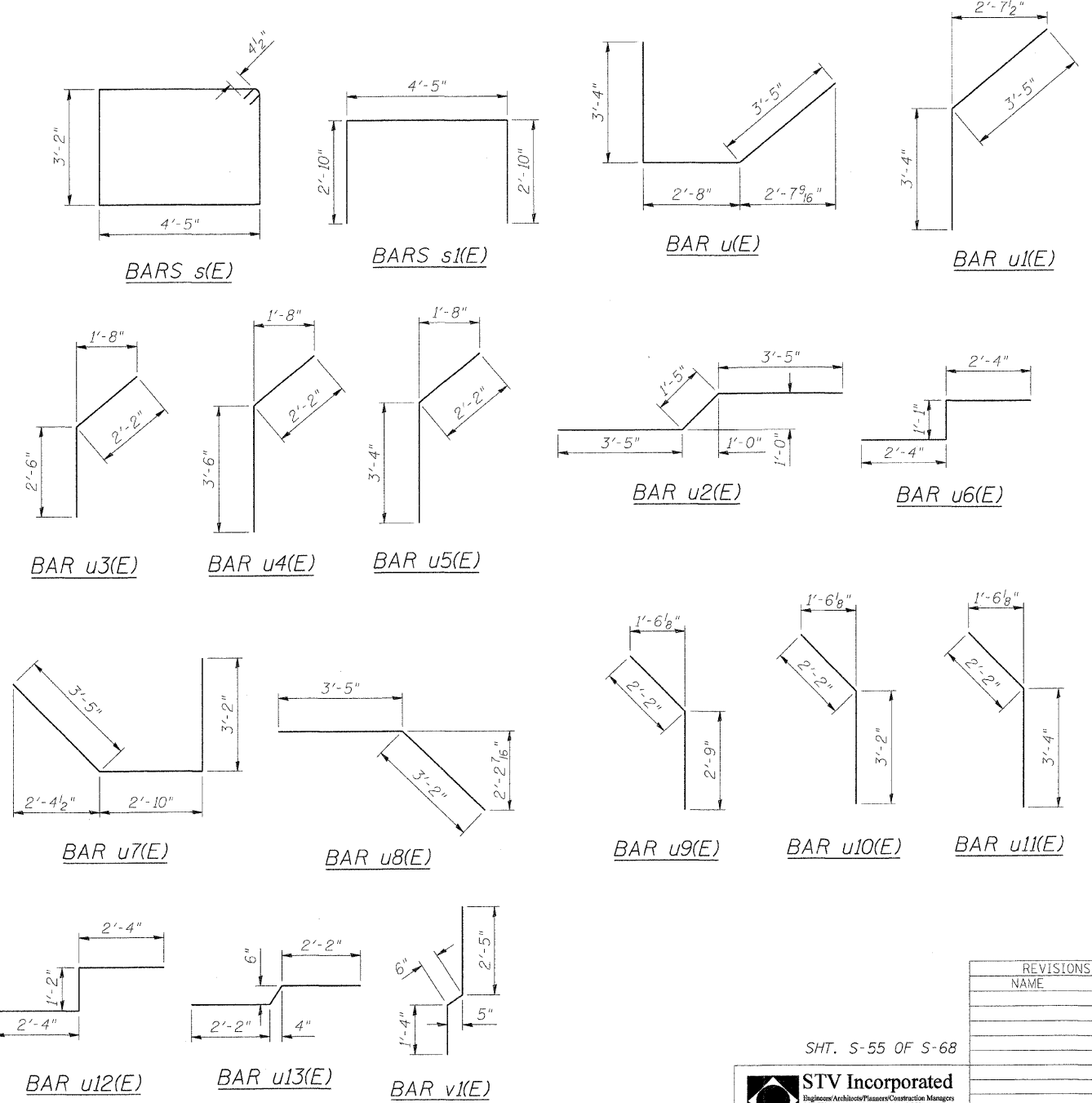
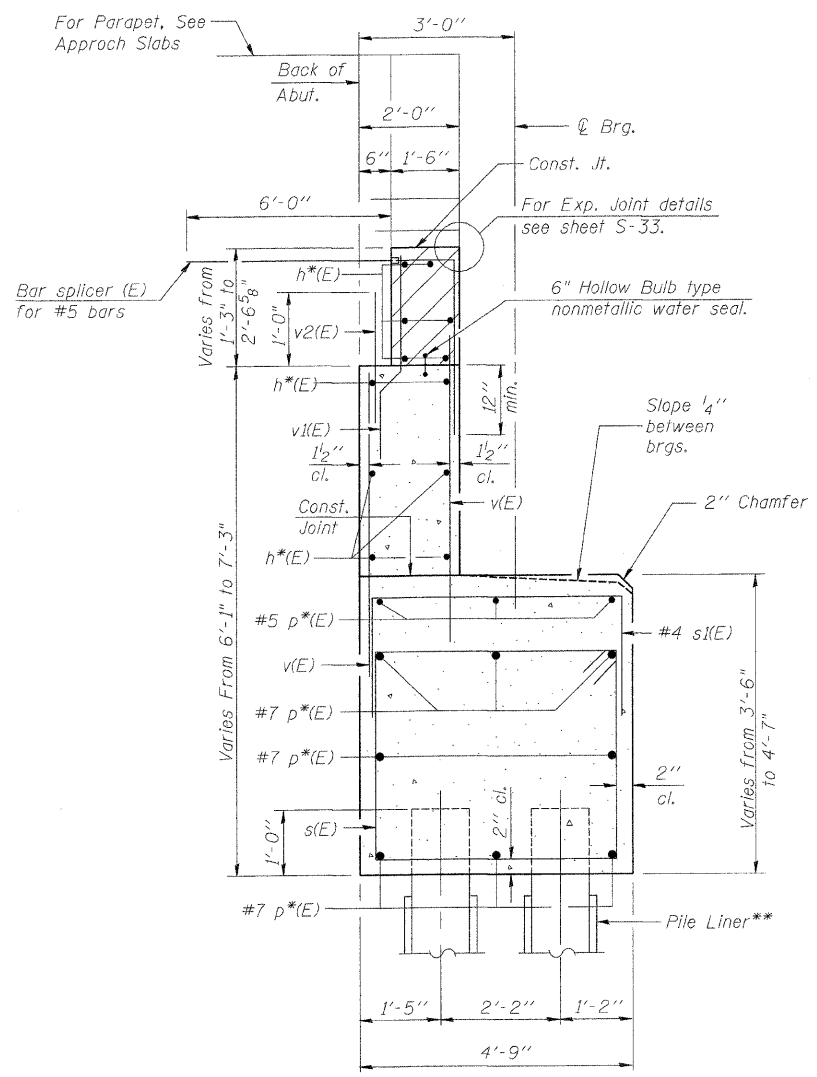


GIRDER	a	b	c	d	e	f
B1,B2	1 ⁹ / ₁₆ "	8 ³ / ₄ "	8 ⁵ / ₁₆ "	3 ⁵ / ₁₆ "	1 ⁹ / ₁₆ "	8 ³ / ₄ "
B3	1 ⁴ / ₄ "	9"	8 ⁵ / ₈ "	2 ⁷ / ₈ "	1 ⁴ / ₄ "	9 ¹ / ₁₆ "
B4	1 ⁴ / ₄ "	9"	9"	2 ⁵ / ₈ "	7 ⁸ / ₈ "	9 ⁵ / ₁₆ "
B5	4 ³ / ₄ "	9"	10 ¹ / ₁₆ "	4 ¹ / ₈ "	2 ¹ / ₁₆ "	11 ⁵ / ₁₆ "
I1,I7	14"	3 ¹ / ₁₆ "	11 ¹ / ₁₆ "	8 ⁵ / ₁₆ "	-	-
2,I6	10 ¹⁵ / ₁₆ "	3 ⁹ / ₁₆ "	8 ¹ / ₁₆ "	7 ² / ₂ "	-	-
3,I5	7 ³ / ₈ "	2 ¹ / ₁₆ "	7 ³ / ₈ "	5 ⁵ / ₁₆ "	-	-
C1,C2	2 ¹ / ₂ "	8 ⁹ / ₁₆ "	8 ⁵ / ₁₆ "	2 ⁴ / ₄ "	2 ² / ₂ "	8 ⁹ / ₁₆ "
C3,C4	2 ⁴ / ₄ "	8 ⁷ / ₈ "	8 ¹⁵ / ₁₆ "	1 ¹⁵ / ₁₆ "	2 ⁴ / ₄ "	8 ⁷ / ₈ "
C5,C6	2 ¹ / ₁₆ "	9"	9 ⁴ / ₄ "	1 ⁵ / ₈ "	1 ¹⁵ / ₁₆ "	9 ³ / ₁₆ "

ANCHOR BOLT LAYOUT EAST ABUTMENT



BILL OF MATERIAL

Bar	No.	Size	Length	Shape
h1(E)	12	#5	27'-8"	—
h2(E)	18	#5	26'-8"	—
h3(E)	12	#5	26'-6"	—
h4(E)	18	#5	27'-7"	—
h5(E)	12	#5	32'-1"	—
h6(E)	18	#5	24'-10"	—
h7(E)	12	#5	30'-11"	—
h8(E)	18	#5	25'-6"	—
h9(E)	2	#5	21'-4"	—
p1(E)	16	#7	34'-0"	—
p2(E)	16	#7	36'-8"	—
p3(E)	6	#5	21'-3"	—
p4(E)	3	#5	10'-9"	—
p5(E)	3	#5	30'-0"	—
p6(E)	3	#5	16'-2"	—
p7(E)	16	#7	37'-6"	—
p8(E)	16	#7	32'-8"	—
p9(E)	3	#5	23'-0"	—
p10(E)	3	#5	31'-5"	—
p11(E)	3	#5	20'-9"	—
p12(E)	3	#5	30'-0"	—
p13(E)	3	#5	11'-3"	—
s(E)	330	#4	15'-11"	□
s1(E)	185	#4	10'-1"	□
u(E)	3	#7	9'-5"	∟
u1(E)	3	#7	6'-9"	∟
u2(E)	6	#7	8'-3"	∟
u3(E)	6	#5	4'-8"	∟
u4(E)	3	#5	5'-8"	∟
u5(E)	3	#5	5'-6"	∟
u6(E)	4	#5	5'-9"	∟
u7(E)	3	#7	9'-5"	∟
u8(E)	3	#7	6'-7"	∟
u9(E)	6	#5	4'-11"	∟
u10(E)	3	#5	5'-4"	∟
u11(E)	3	#5	5'-6"	∟
u12(E)	4	#5	5'-10"	∟
u13(E)	4	#5	4'-11"	∟
v(E)	532	#5	4'-10"	—
v1(E)	266	#4	4'-3"	—
v2(E)	266	#5	2'-6"	—
Concrete Structures	Cu. Yd.	221		
Reinforcement Bars, Epoxy Coated	Pound	17,310		
Test Pile Metal Shell	Each	1		
Furnishing Metal Pile Shells 12" x 0.250"	Foot	5,676		
Driving Piles	Foot	5,676		

- NOTES:
- Hatched area to be poured after superstructure falsework has been removed. Quantity of concrete included with Concrete Superstructure.
 - * - Indicates for bar designation see abutment plan and elevation.
 - ** - Pile Liner shall be included in the cost of "Furnishing Metal Pile Shells 12". Do not fill annulus between pile and pile liner. Provide filter fabric around top of pile liner.
 - Reinforcement bars designated (E) shall be epoxy coated.
 - For details of Bar splicers, see Sht. S-63.

REVISIONS	
NAME	DATE

SHT. S-55 OF S-68

STV Incorporated
Engineers/Architects/Planners/Construction Managers
 200 W. Monroe Street, Suite 1650
 Chicago, IL 60606-5015
 312/353-0655, FAX 312/553-0661

ILLINOIS DEPARTMENT OF TRANSPORTATION
 IL ROUTE 162 OVER I-55/70 IN TROY
 F.A.I. ROUTE 70 SECTION 60-10K-1, 60-10HB
 MADISON COUNTY STATION 499+48.35
 STRUCTURE NO. 060-0338

EAST ABUTMENT DETAILS

DESIGNED: JAW DRAWN: BTO
 CHECKED: BTO CHECKED: JAW

DATE: 03/06