

F.A.I. RTE.	SECTION	COUNTY	TOTAL SHEETS	SHEET NO.
70	60-10K-1,60-10HB	MADISON	420	278
STA.	TO STA.			
FED. ROAD DIST. NO.	ILLINOIS	FED. AID PROJECT		

CONTRACT NO. 76709

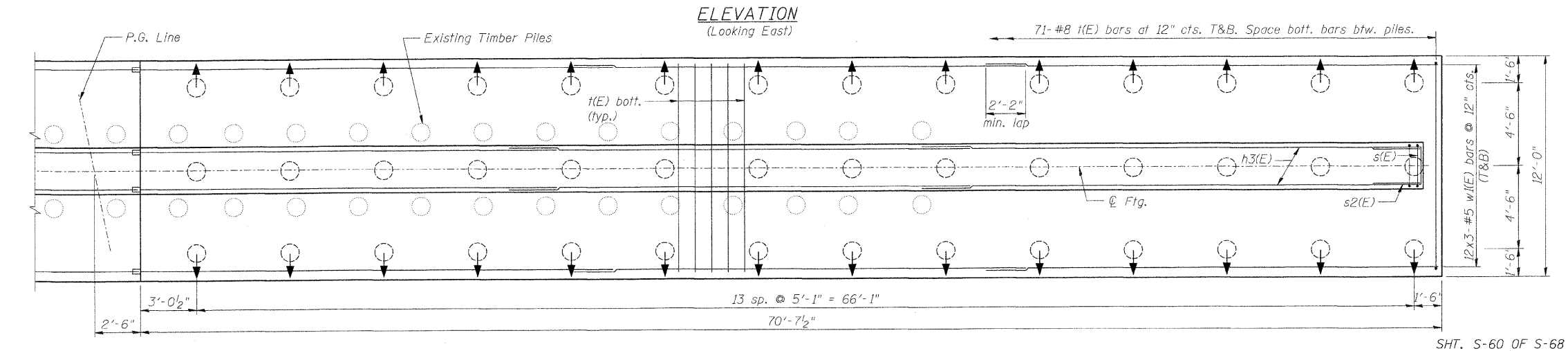
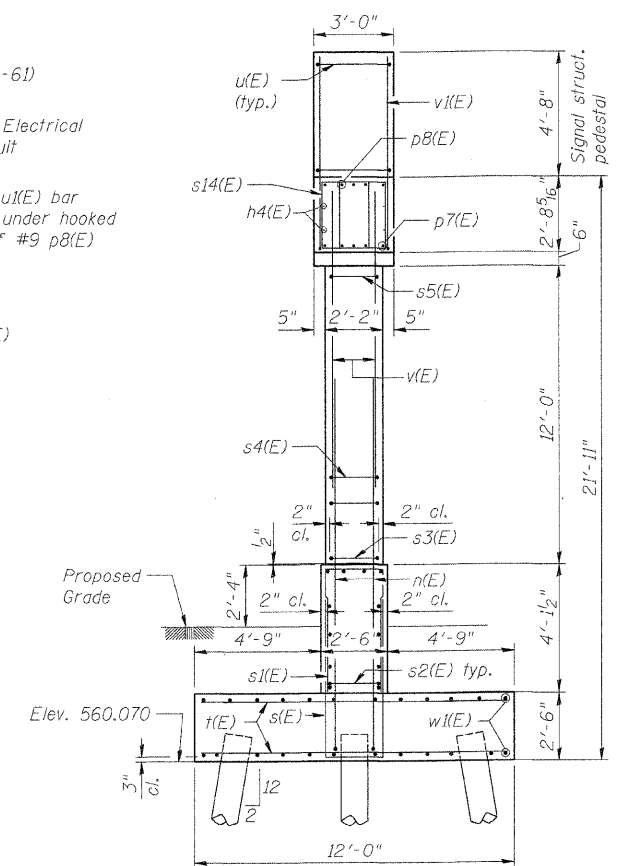
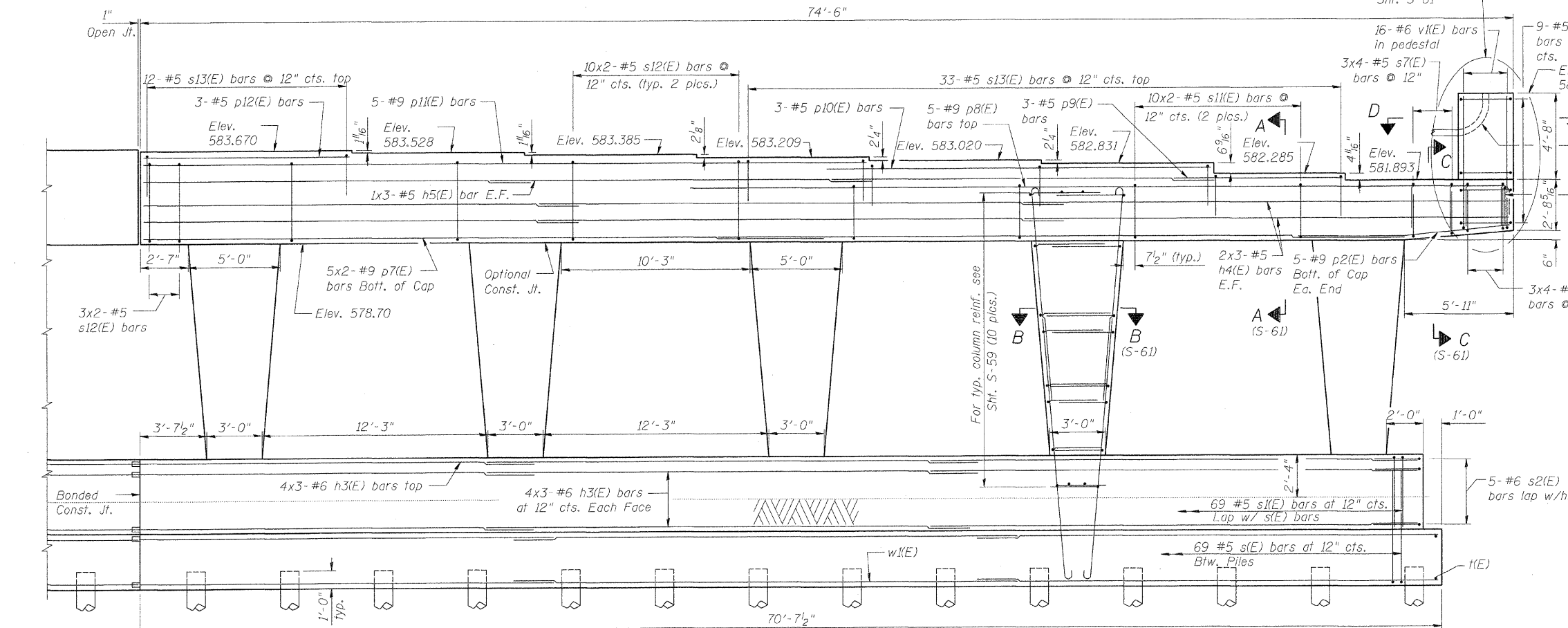
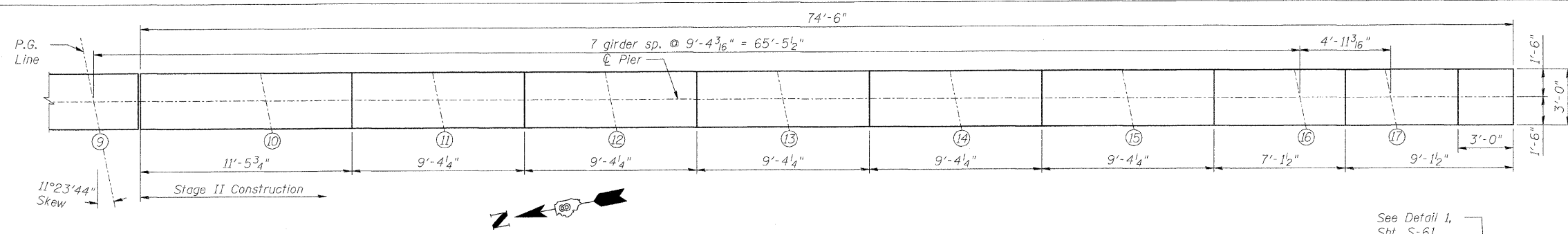
**PILE DATA**

Type: 12"  $\phi$  Metal Shell w/  $\frac{1}{4}$ " wall  
 Nominal Required Bearing: 355 kips  
 Allowable Resistance Available: 80 kips  
 Est. Length: 53 ft  
 No. Required: 42

Size	Lap
#5	3'-0"
#6	3'-7"
#7	3'-5"
#8	4'-6"
#9	5'-9"

**MIN. BAR LAP**  
 Unless noted otherwise

The Metal Shell piles shall be according to ASTM A252 Grade 3



**NOTE:**  
 For notes, see sht. S-59.

$\odot$  Denotes Battered Pile (2:12)

REVISIONS	NAME	DATE

ILLINOIS DEPARTMENT OF TRANSPORTATION  
 IL ROUTE 162 OVER I-55/70 IN TROY  
 F.A.I. ROUTE 70 SECTION 60-10K-1, 60-10HB  
 MADISON COUNTY STATION 499+48.35  
 STRUCTURE NO. 060-0338

PIER PLAN & ELEVATION - STAGE II

DESIGNED: BTO  
 CHECKED: AWH  
 DATE: 03/06

DRAWN: BTO  
 CHECKED: AWH



SHT. S-60 OF S-68