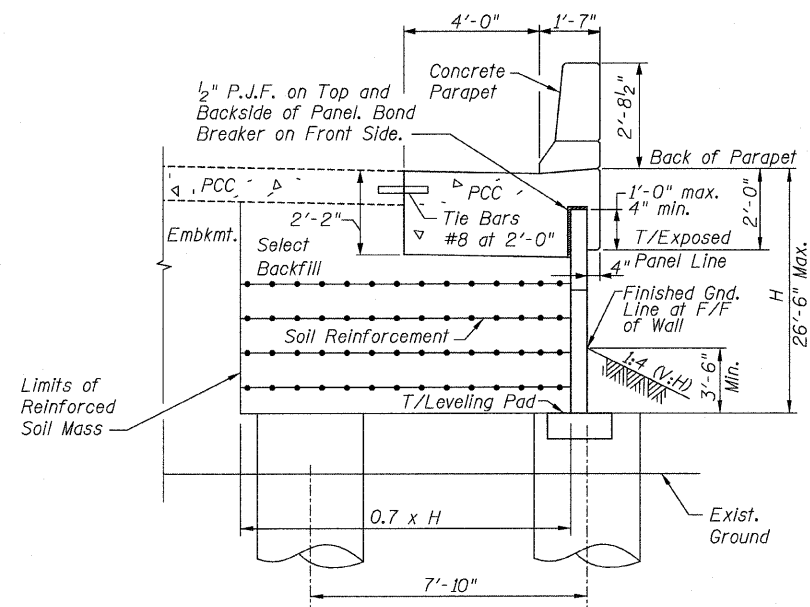
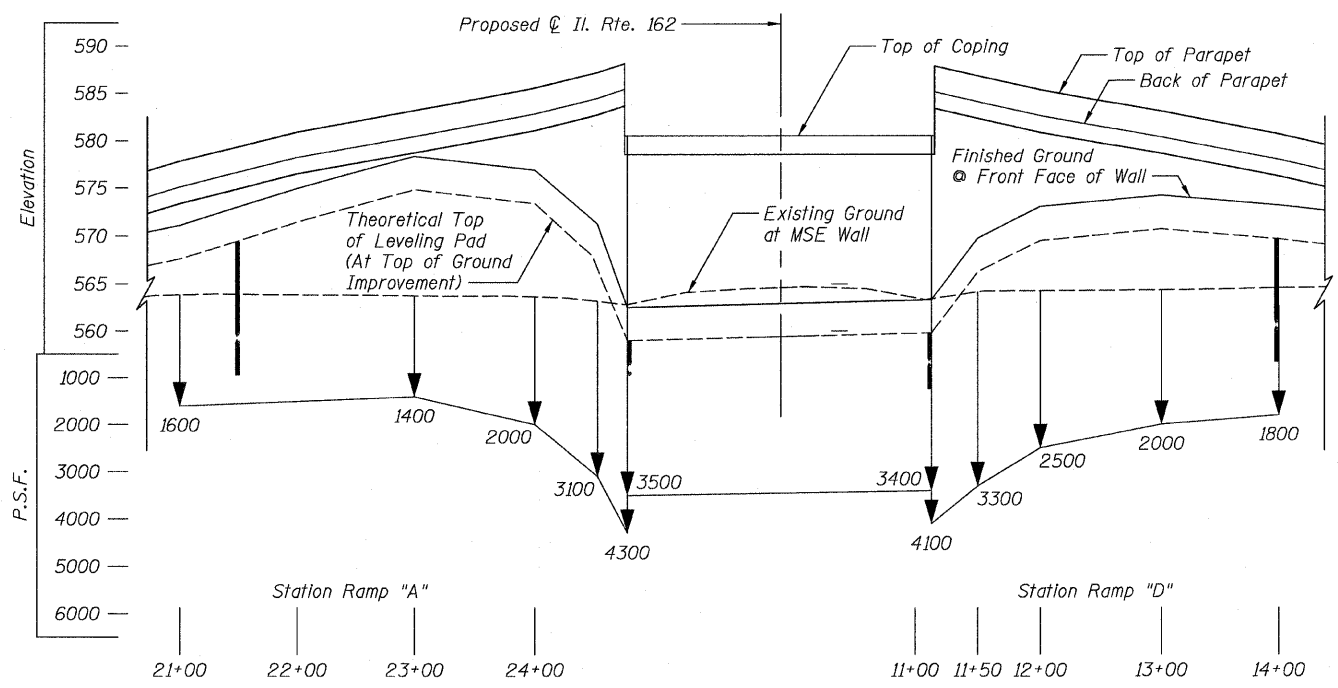


|                     |                    |                  |              |           |
|---------------------|--------------------|------------------|--------------|-----------|
| F.A.I. RTE.         | SECTION            | COUNTY           | TOTAL SHEETS | SHEET NO. |
| 70                  |                    | MADISON          | 420          | 289       |
| STA.                | TO STA.            |                  |              |           |
| FED. ROAD DIST. NO. | ILLINOIS           | FED. AID PROJECT |              |           |
| 60-10K-1, 60-10HB   | CONTRACT NO. 76709 |                  |              |           |



**SECTION Thru WALL**



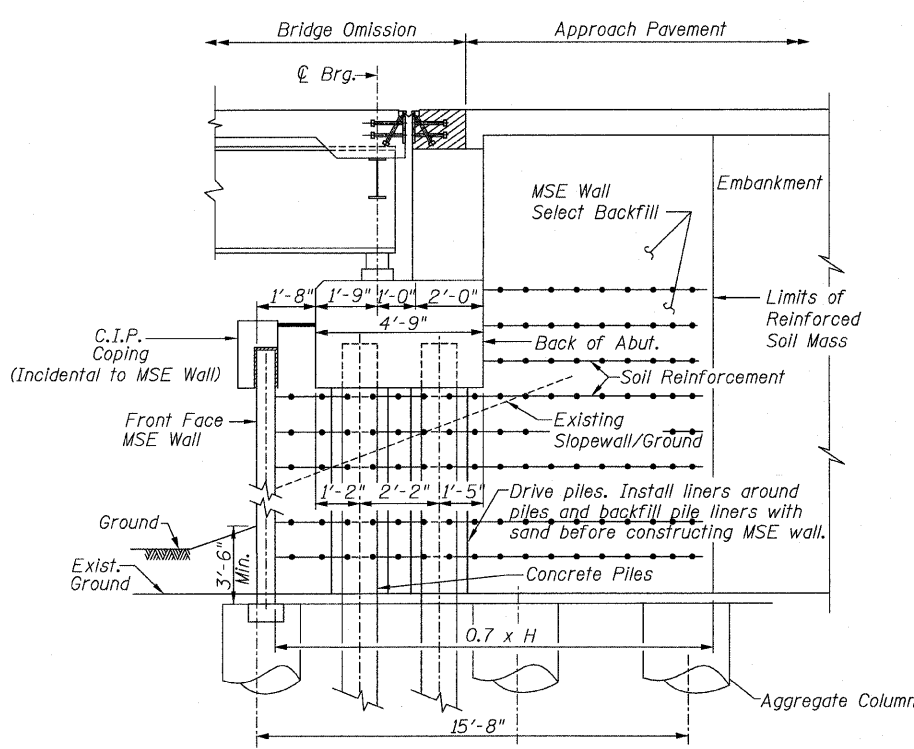
**EQUIVALENT UNIFORM SERVICE BEARING PRESSURE**  
(At Top of Ground Improvement)

**INDEX OF SHEETS**

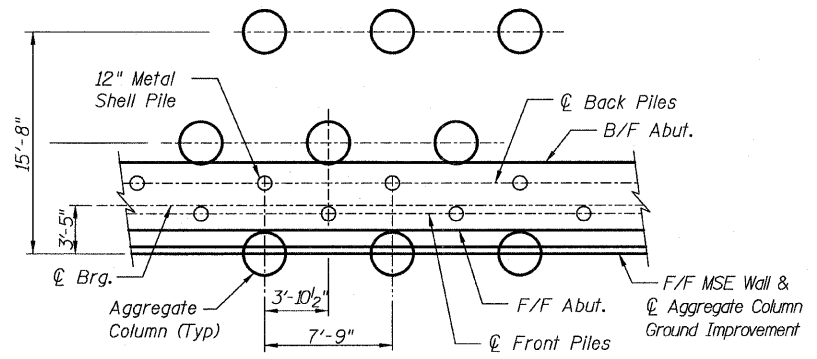
- R-01 General Plan I
- R-02 General Plan II
- R-03 Index of Sheets, General Notes, BOM, Wall Sections & Aggregate Column Ground Improvement Layout
- R-04 Parapet Elevations & Shoulder Plans Ramp A
- R-05 Parapet Elevations & Shoulder Plans Ramp A
- R-06 Parapet Elevation & Shoulder Plan Ramp A
- R-07 Parapet Elevations & Shoulder Plans Ramp D
- R-08 Parapet Elevations & Shoulder Plans Ramp D
- R-09 Parapet Elevation & Shoulder Plan Ramp D
- R-10 Parapet & Anchorage Slab Details Ramp A & D
- R-11 Boring Logs
- R-12 Boring Logs
- R-13 Boring Logs
- R-14 Boring Logs

**TOTAL BILL OF MATERIAL**

| ITEM   | UNIT  | TOTAL  |
|--|-------|--------|
| Concrete Structures                          | CU YD | 625    |
| Protective Coat                              | SQ YD | 996    |
| Reinforcement Bars, Epoxy Coated             | POUND | 66,690 |
| Name Plates                                  | EACH  | 1      |
| Mechanically Stabilized Earth Retaining Wall | SQ FT | 16,400 |
| Aggregate Column Ground Improvement          | CU YD | 4,280  |

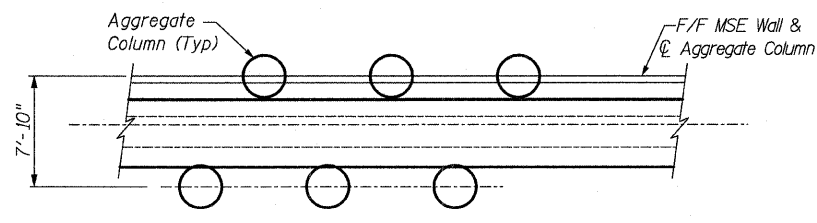


**SECTION AT ABUTMENT**  
(Dimensions @ Rt. L's)



**TYPICAL AGGEGATE COLUMN GROUND IMPROVEMENT/PILE LAYOUT (SHOWN AT ABUTMENT)**

Contractor shall alternate aggregate column and pile spacing as shown.



**TYPICAL AGGEGATE COLUMN GROUND IMPROVEMENT LAYOUT (SHOWN AT RAMP WALL)**

**GENERAL NOTES:**

1. Reinforcement bars designated (E) shall be Epoxy Coated.
2. All edges shall have a 3/4" chamfer unless otherwise noted.
3. Sawed construction joints, and construction joints in shoulders, and grooved joints and expansion joints in parapets, shall be collinear with sawed construction joints in PCC pavement (jointed).
4. Reinforcement bars shall conform to the requirements of ASTM A 706 Grade 60
5. All construction joints shall be bonded.

| REVISIONS |      |
|-----------|------|
| NAME      | DATE |
|           |      |
|           |      |
|           |      |
|           |      |
|           |      |

ILLINOIS DEPARTMENT OF TRANSPORTATION  
IL ROUTE 162 OVER I-55/70 IN TROY  
F.A.I ROUTE 70 SECTION 60-10K-1, 60-10HB  
MADISON COUNTY STA. 18+50 TO STA. 17+00  
STRUCTURE NO. 060-W004

INDEX OF SHEETS, GENERAL NOTES, BOM  
WALL SECTIONS & AGGREGATE COLUMN  
GROUND IMPROVEMENT LAYOUT  
RAMP A & D DRAWN BY KM  
DATE: 05/2006 CHECKED BY BJJ

Sht. R-03 of R-14

**STV Incorporated**  
Engineers/Architects/Planners/Construction Managers  
200 W. Monroe Street, Suite 1650  
Chicago, IL 60606-5015  
312/553-0655, FAX 312/553-0661