

BENCH MARK

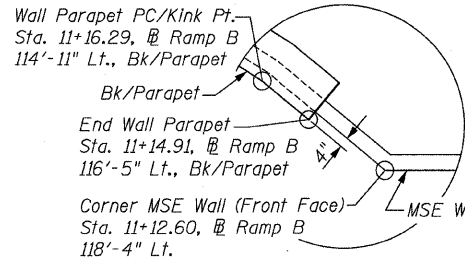
CP#35, Iron Pin w/Cap, Sta. 502+30.81, 37.37' Rt, El. 582.812

EXISTING STRUCTURE

Bridge S.N. 060-0139 was built in 1956 as U. S. Route 40 Bypass over F. A. Route 190 (U. S. Route 66). It was widened and the deck reconstructed in 1978. The four span structure was built on concrete piles at the abutments and timber piles at the piers. The back to back abutment length is 194'-0" and the deck is 75'-2" out to out.

During construction of the new structure, staged construction will be utilized to maintain one lane of traffic in each direction.

No salvage.



DETAIL 2

DESIGN STRESSES

FIELD UNITS

$f'_c = 3,500$ psi (concrete)
 $f_y = 60,000$ psi (reinforcement)

PRECAST UNIT

$f'_c = 4,500$ psi (precast panels)

DESIGN SPECIFICATION

2002 AASHTO Std. Spec, 17th edition

NOTE

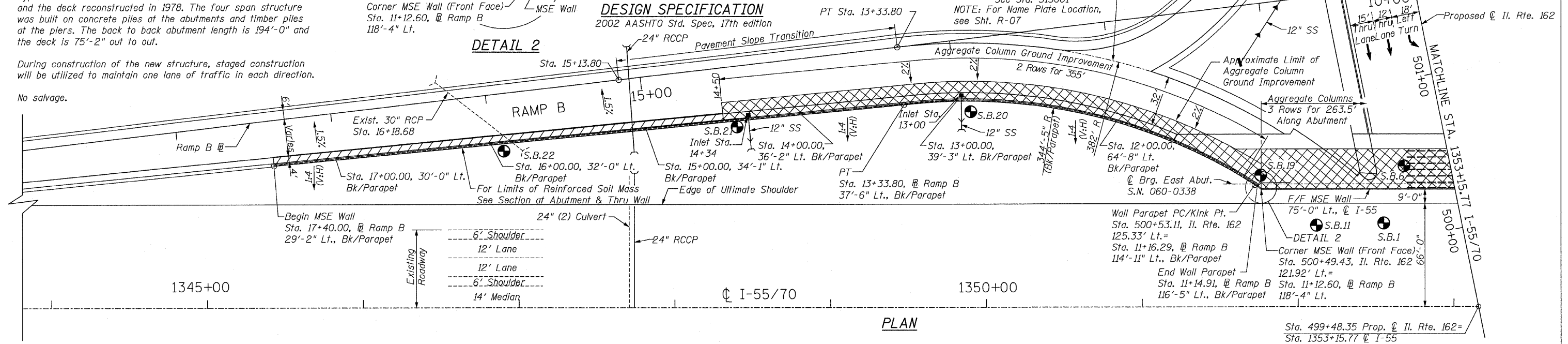
Wall is Built in Conjunction with New Bridge, S.N. 060-0338.

STATION 22+50
 BUILT 200_ BY
 STATE OF ILLINOIS
 F.A.I. RT. 70
 SEC. 60-10K-1, 60-10HB
 LOADING HS20
 STR. NO. 060-W006

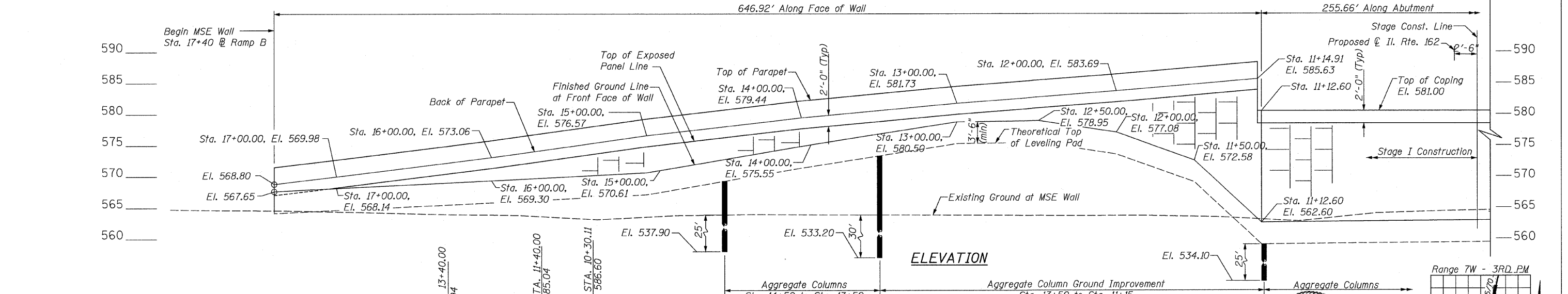
NAME PLATE

See Sta. 515001
 NOTE: For Name Plate Location, see Sht. R-07

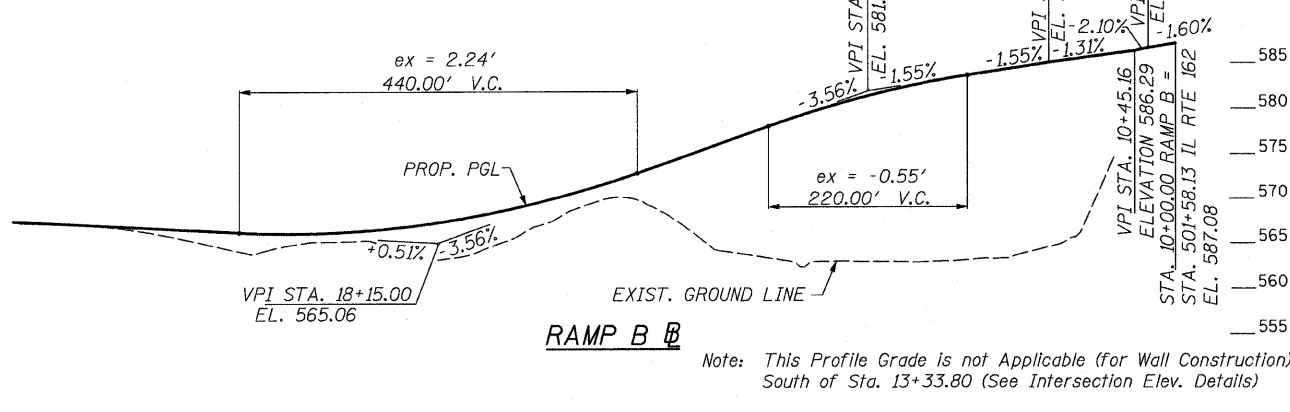
| | | | | |
|---------------------|----------|--------------------------------------|--------------|-----------|
| F.A.I. RTE. | SECTION | COUNTY | TOTAL SHEETS | SHEET NO. |
| 70 | | MADISON | 420 | 301 |
| STA. | TO STA. | | | |
| FED. ROAD DIST. NO. | ILLINOIS | FED. AID PROJECT | | |
| | | 60-10K-1, 60-10HB CONTRACT NO. 76709 | | |



PLAN



ELEVATION

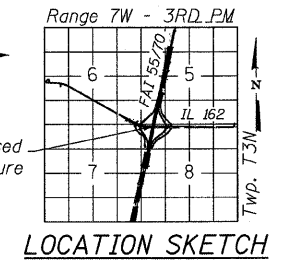
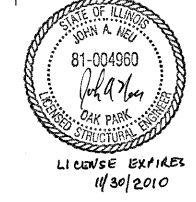


PROFILE GRADE LINE

NB & SB I-55/70

- = Approximate Limit of Reinforced Soil Mass
- = Approximate Limit of Aggregate Column Ground Improvement & Reinforced Soil Mass

APPROVED
 FOR STRUCTURAL ADEQUACY ONLY
Ralph E. Anderson
 ENGINEER OF BRIDGES AND STRUCTURES



| REVISIONS | |
|-----------|------|
| NAME | DATE |
| | |
| | |
| | |
| | |

ILLINOIS DEPARTMENT OF TRANSPORTATION
 IL ROUTE 162 OVER I-55/70 IN TROY
 F.A.I. ROUTE 70 SECTION 60-10K-1, 60-10HB
 MADISON COUNTY STA. 17+40 TO STA. 22+50
 STRUCTURE NO. 060-W006

GENERAL PLAN I

DRAWN: AWH
 CHECKED: JAN

STV Incorporated
 Engineers/Architects/Planners/Construction Managers
 200 W. Monroe Street, Suite 1650
 Chicago, IL 60606-5015
 312/533-0655, FAX 312/533-0661

Sht. R-01 of R-13

DATE: 05/2006