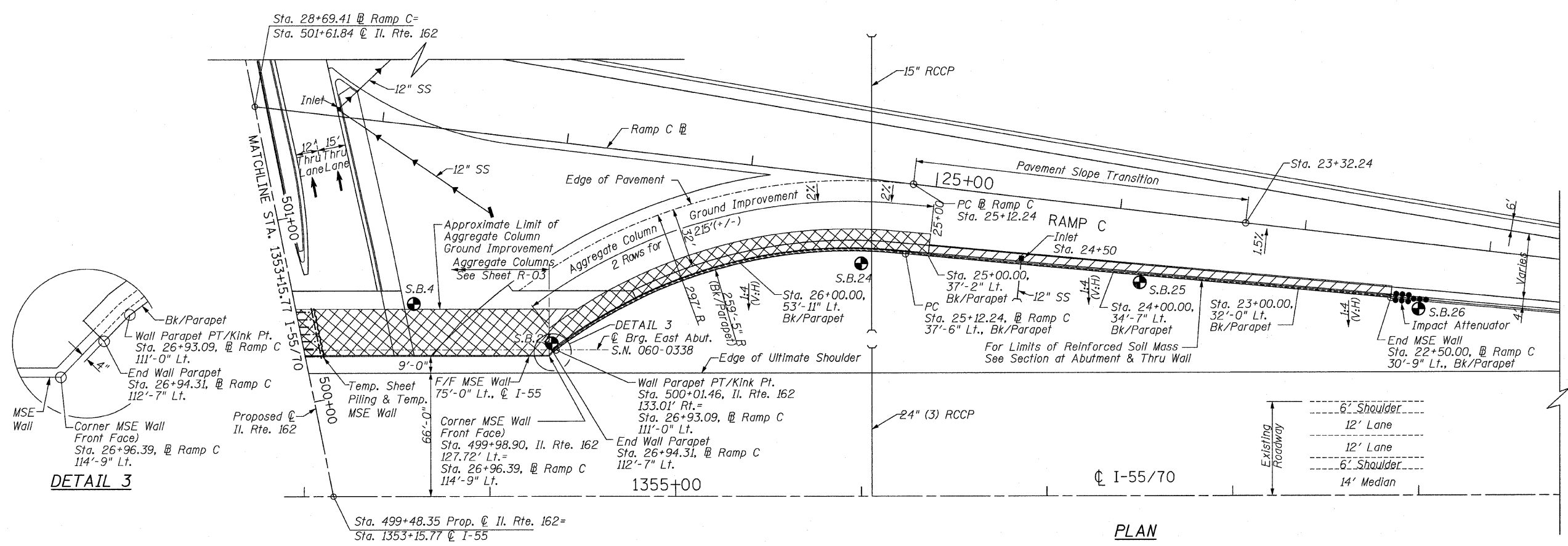
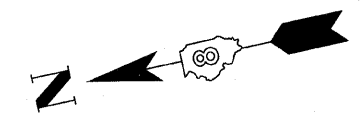
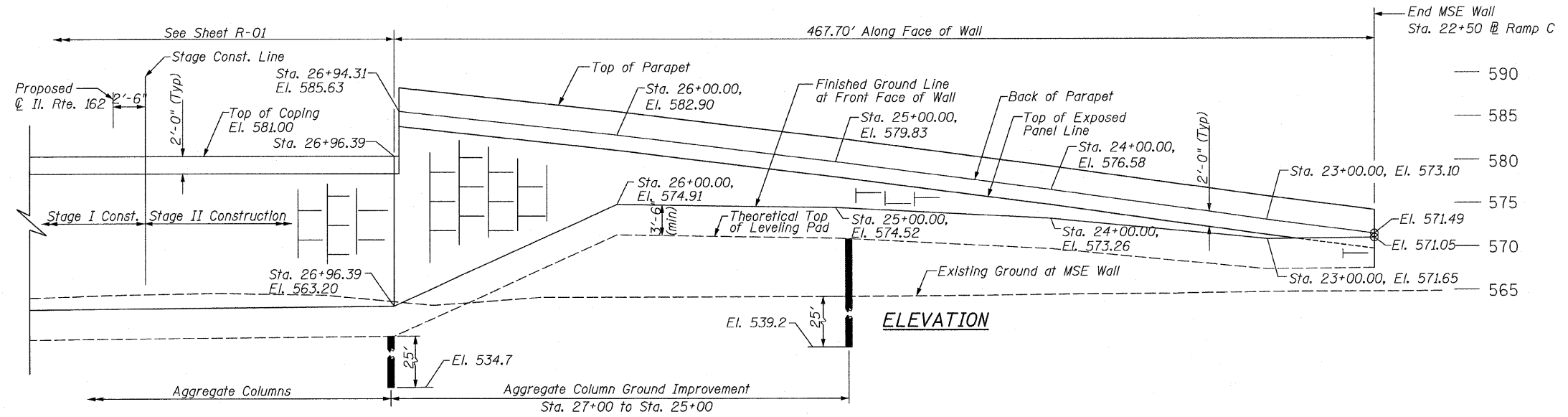


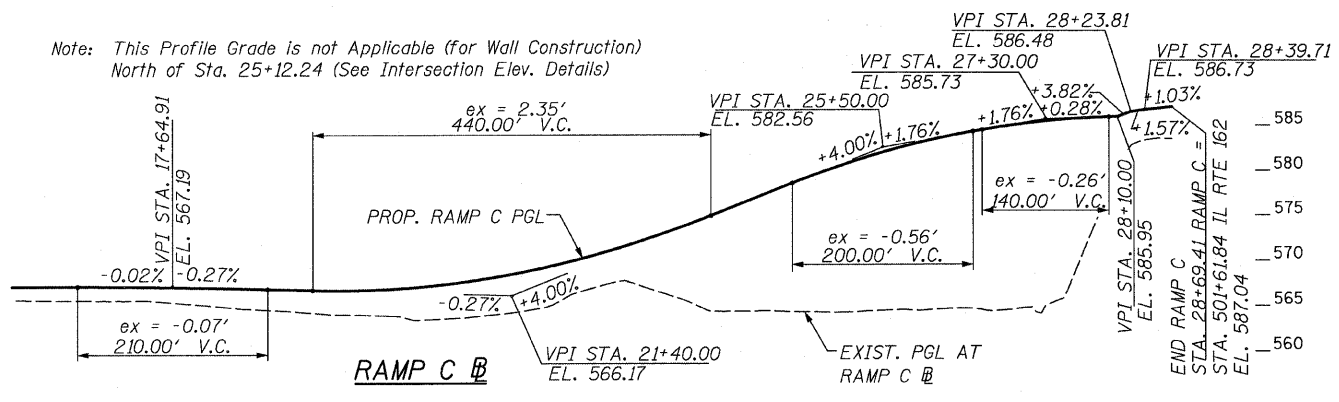
F.A.I. RTE.	SECTION	COUNTY	TOTAL SHEETS	SHEET NO.
70	•	MADISON	420	302
STA.	TO STA.			
FED. ROAD DIST. NO.	ILLINOIS FED. AID PROJECT			
• 60-10K-1, 60-10HB CONTRACT NO. 76709				



PLAN



ELEVATION



Note: This Profile Grade is not Applicable (for Wall Construction) North of Sta. 25+12.24 (See Intersection Elev. Details)

- = Approximate Limit of Reinforced Soil Mass
- = Approximate Limit of Aggregate Column Ground Improvement & Reinforced Soil Mass

REVISIONS	
NAME	DATE

ILLINOIS DEPARTMENT OF TRANSPORTATION  
 IL ROUTE 162 OVER I-55/70 IN TROY  
 F.A.I ROUTE 70 SECTION 60-10K-1, 60-10HB  
 MADISON COUNTY STA. 17+40 TO STA. 22+50  
 STRUCTURE NO. 060-W006

GENERAL PLAN II

DRAWN: AWH  
 CHECKED: JAN

Sht. R-02 of R-13

**STV Incorporated**  
 Engineers/Architects/Planners/Construction Managers  
 200 W. Monroe Street, Suite 1650  
 Chicago, IL 60606-3015  
 312.253.0655, FAX 312.253.0661

DATE: 05/2006