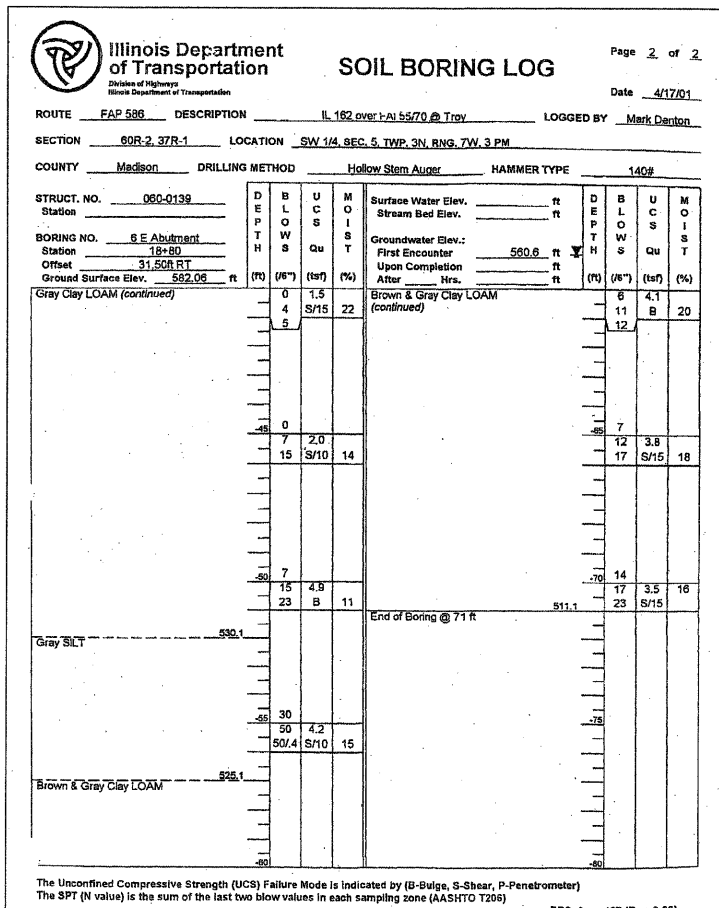
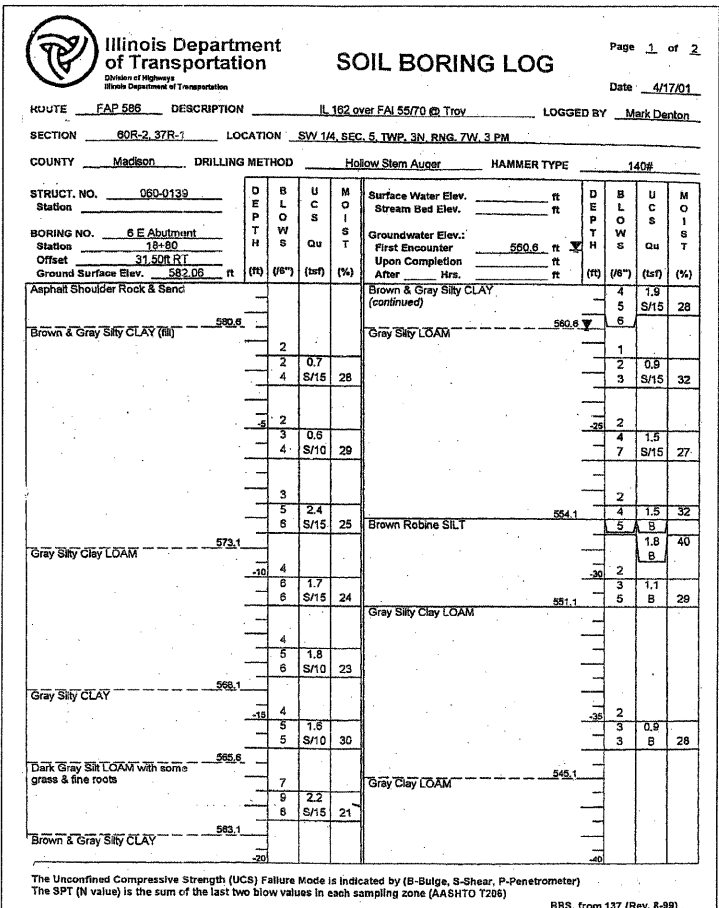
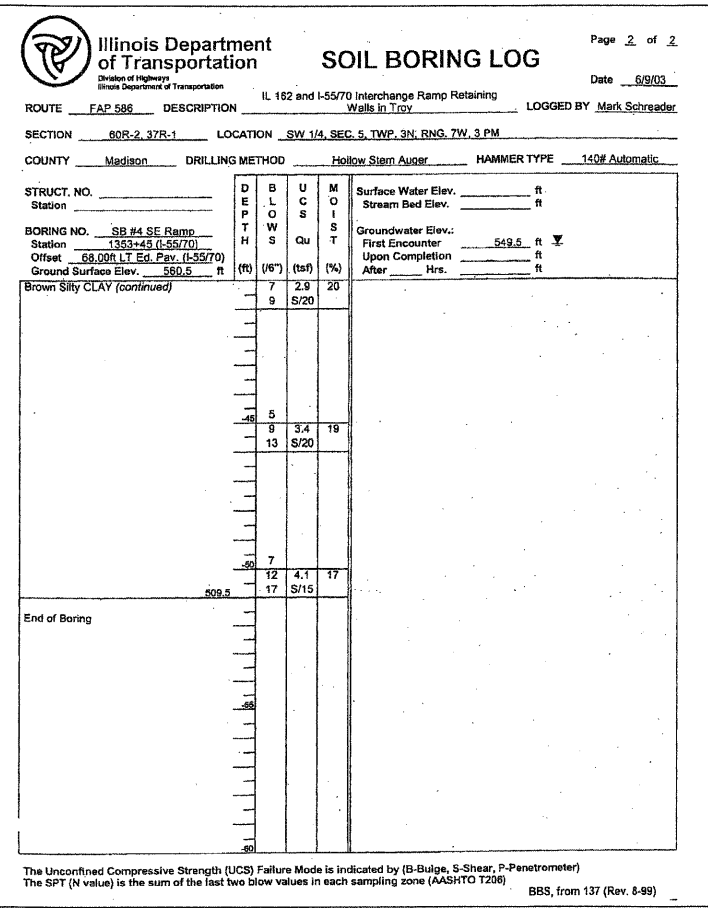
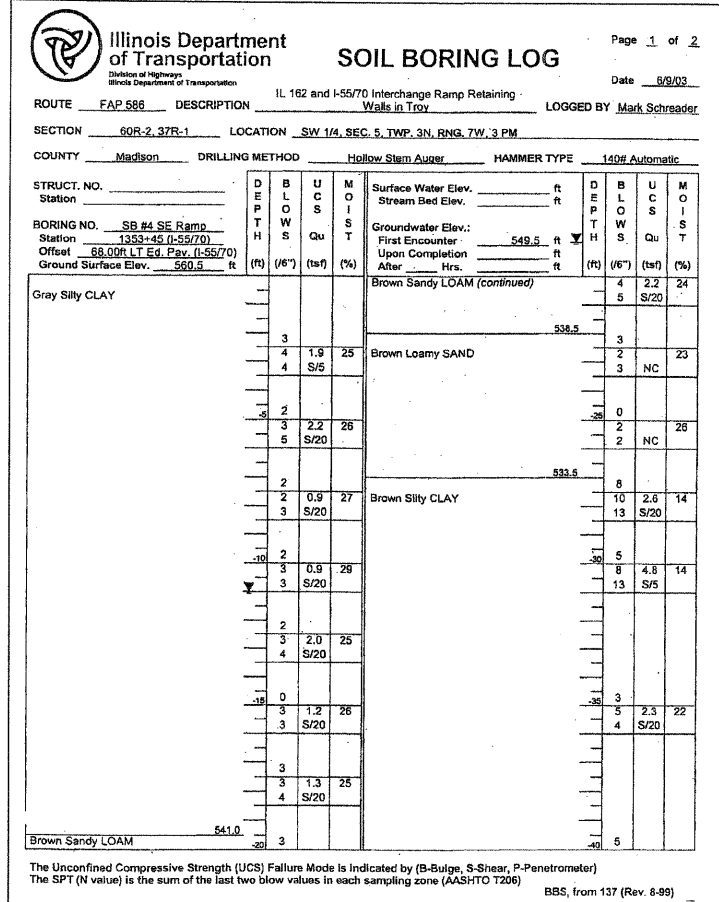
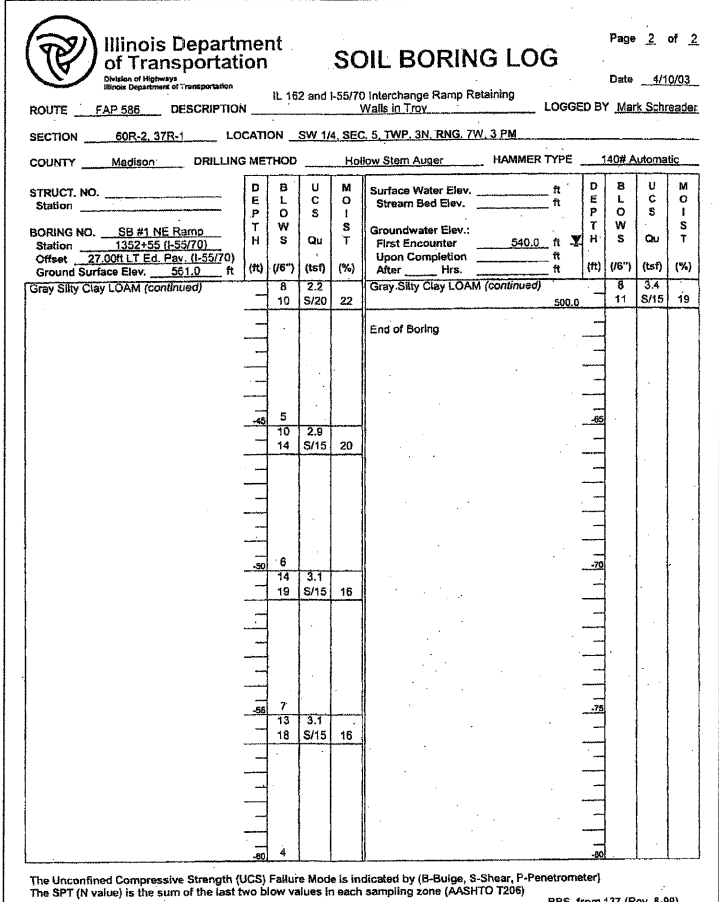
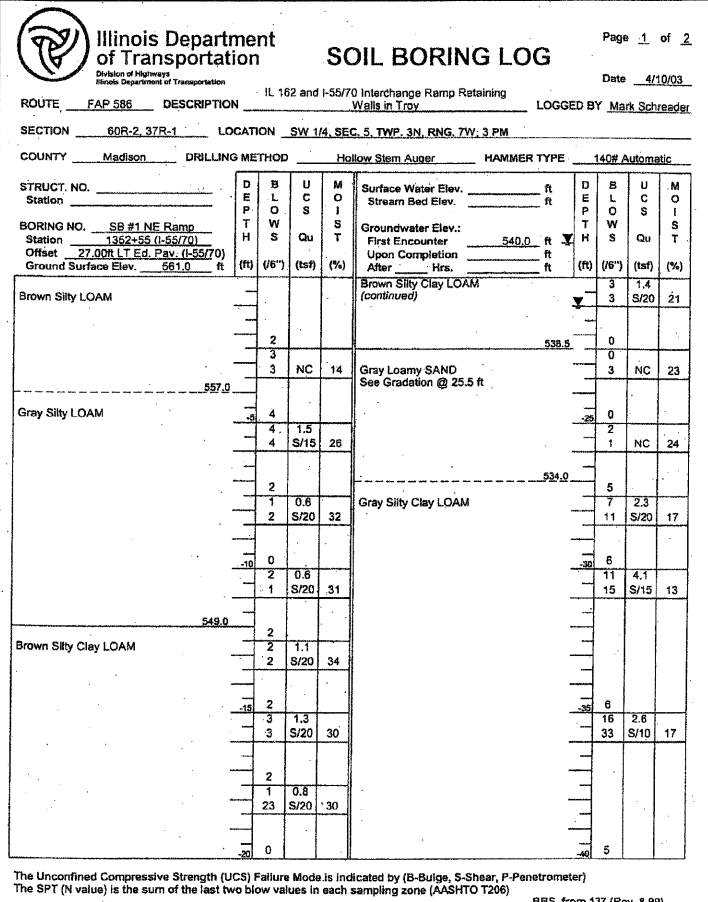


F.A.I. RTE.	SECTION	COUNTY	TOTAL SHEETS	SHEET NO.
70		MADISON	420	310
STA.	TO STA.			
FED. ROAD DIST. NO.	ILLINOIS	FED. AID PROJECT		
• 60-10K-1, 60-10HB CONTRACT NO. 76709				



NOTE:
1. Structure Number listed on boring logs as 060-W002 is SN 060-W006.

Sht. R-10 of R-13

REVISIONS	
NAME	DATE

ILLINOIS DEPARTMENT OF TRANSPORTATION
IL ROUTE 162 OVER I-55/70 IN TROY
F.A.I ROUTE 70 SECTION 60-10K-1, 60-10HB
MADISON COUNTY STA. 17+40 TO STA. 22+50
STRUCTURE NO. 060-W006

BORING LOGS

DATE: 05/2006

DRAWN: BT0
CHECKED: JAN