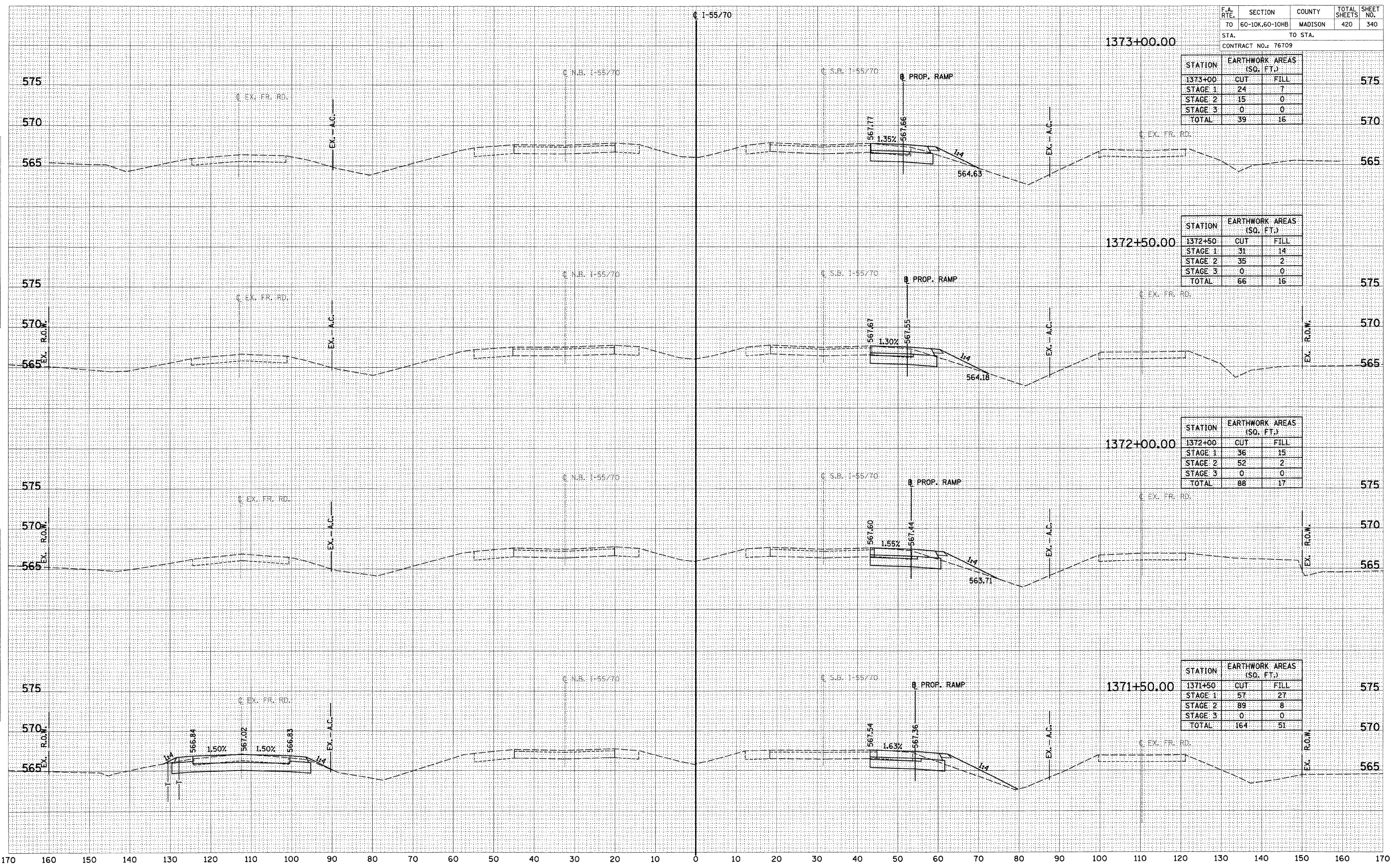


STATION	EARTHWORK AREAS (SQ. FT.)		
	CUT	FILL	
1373+00	24	7	575
STAGE 1	15	0	
STAGE 2	0	0	
TOTAL	39	16	570

STATION	EARTHWORK AREAS (SQ. FT.)		
	CUT	FILL	
1372+50	31	14	575
STAGE 1	35	2	
STAGE 2	0	0	
TOTAL	66	16	570

STATION	EARTHWORK AREAS (SQ. FT.)		
	CUT	FILL	
1372+00	36	15	575
STAGE 1	52	2	
STAGE 2	0	0	
TOTAL	88	17	570

STATION	EARTHWORK AREAS (SQ. FT.)		
	CUT	FILL	
1371+50	57	27	575
STAGE 1	89	8	
STAGE 2	0	0	
TOTAL	164	51	570



BY: _____ DATE: _____
 SURVEYED: _____
 PLOTTED: _____
 NOTE BOOK: _____
 AREAS CHECKED: _____

BY: _____ DATE: _____
 SURVEYED: _____
 PLOTTED: _____
 NOTE BOOK: _____
 AREAS CHECKED: _____