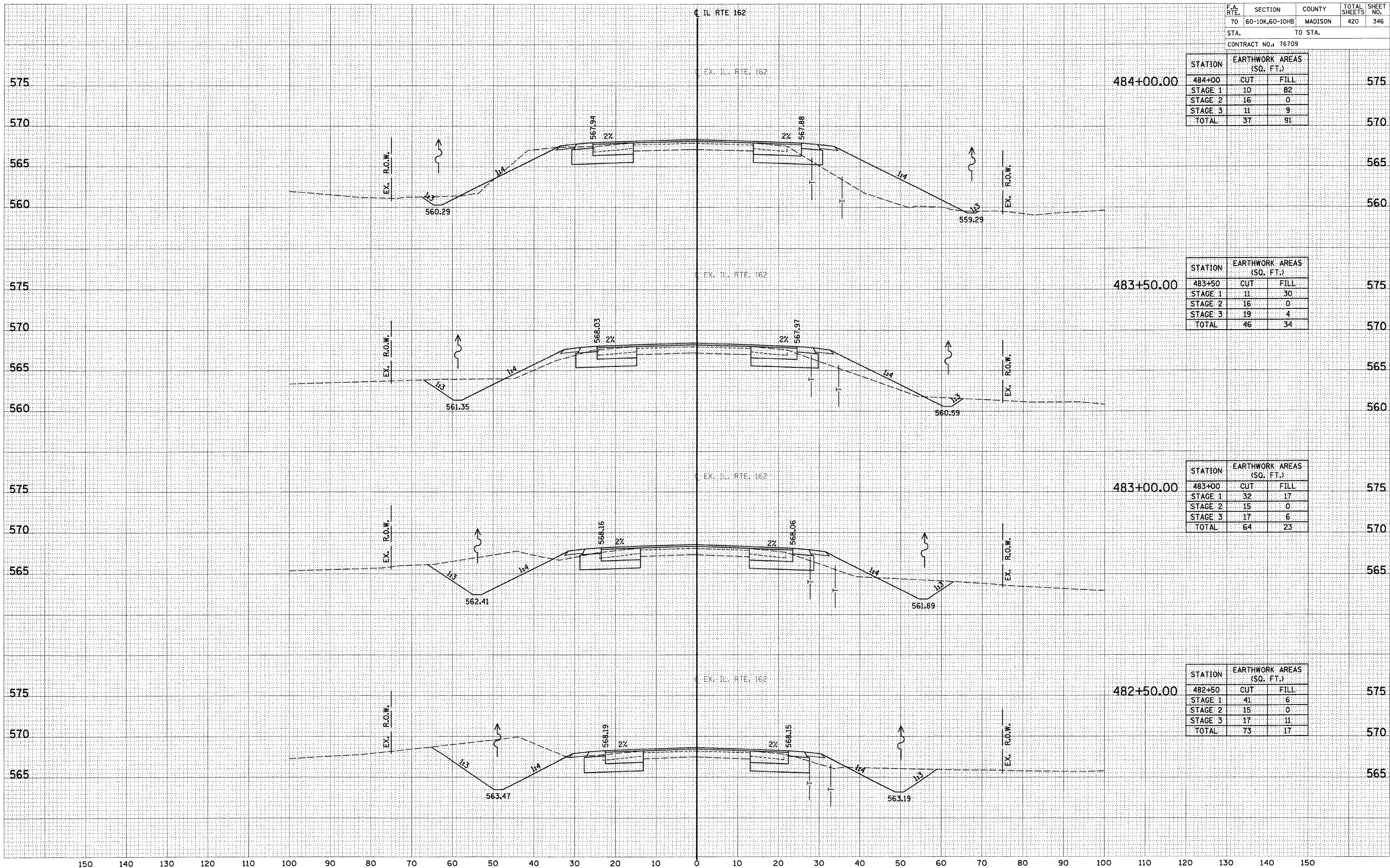


STATION	EARTHWORK AREAS (SQ. FT.)		
484+00	CUT	FILL	575
STAGE 1	10	82	
STAGE 2	16	0	
STAGE 3	11	9	
TOTAL	37	91	570

STATION	EARTHWORK AREAS (SQ. FT.)		
483+50	CUT	FILL	575
STAGE 1	11	30	
STAGE 2	16	0	
STAGE 3	19	4	
TOTAL	46	34	570

STATION	EARTHWORK AREAS (SQ. FT.)		
483+00	CUT	FILL	575
STAGE 1	32	17	
STAGE 2	15	0	
STAGE 3	17	6	
TOTAL	64	23	570

STATION	EARTHWORK AREAS (SQ. FT.)		
482+50	CUT	FILL	575
STAGE 1	41	6	
STAGE 2	15	0	
STAGE 3	17	11	
TOTAL	73	17	570



DATE
BY
SURVEYED
SURVEY
NOTE BOOK
NO.

DATE
BY
SURVEYED
SURVEY
NOTE BOOK
NO.