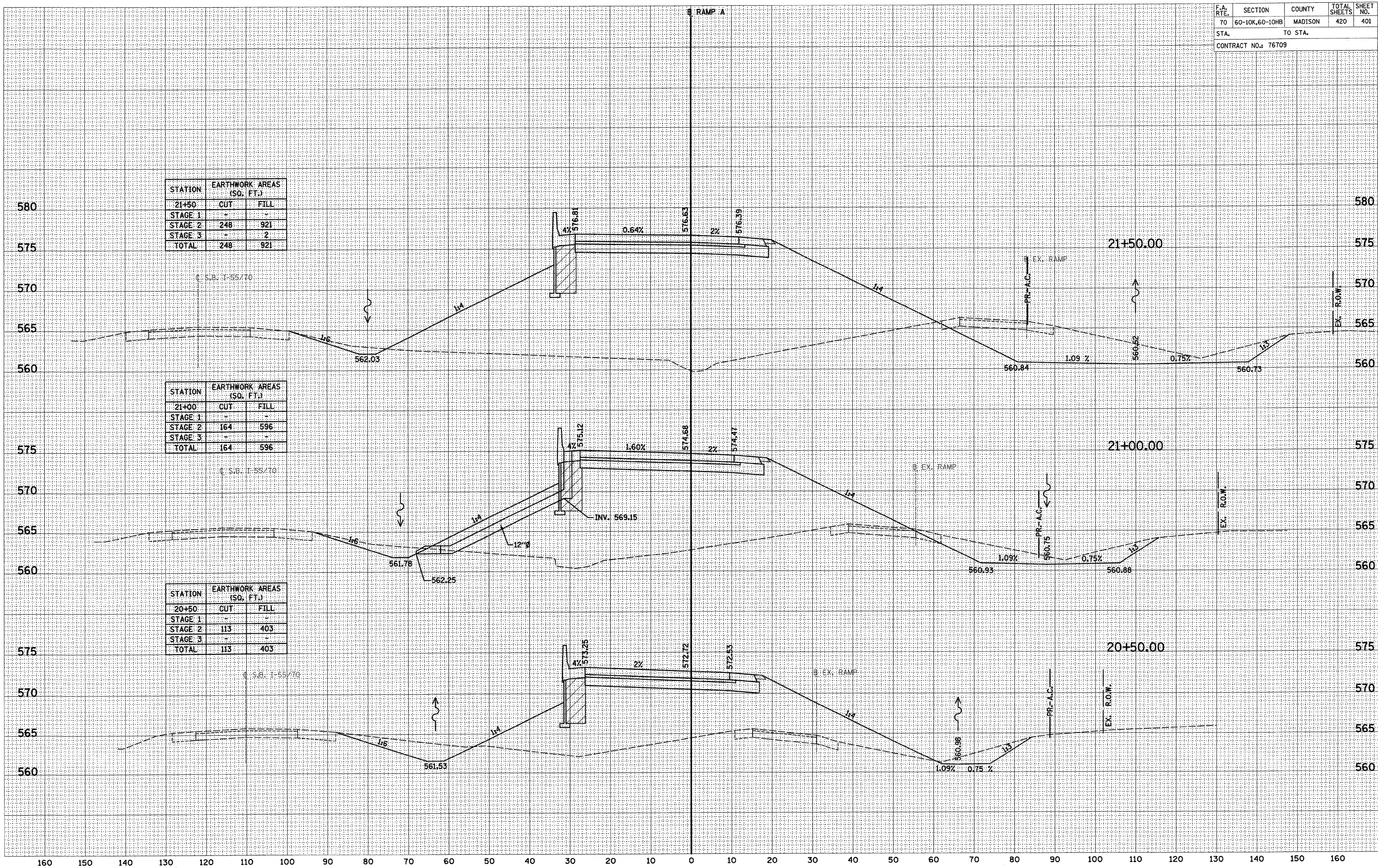


STATION	EARTHWORK AREAS (SQ. FT.)	
	CUT	FILL
21+50	-	-
STAGE 1	-	-
STAGE 2	248	921
STAGE 3	-	2
TOTAL	248	921

STATION	EARTHWORK AREAS (SQ. FT.)	
	CUT	FILL
21+00	-	-
STAGE 1	-	-
STAGE 2	164	596
STAGE 3	-	-
TOTAL	164	596

STATION	EARTHWORK AREAS (SQ. FT.)	
	CUT	FILL
20+50	-	-
STAGE 1	-	-
STAGE 2	113	403
STAGE 3	-	-
TOTAL	113	403



DATE _____ BY _____
 SURVEYED _____
 PLOTTED _____
 TEMPLATE _____
 NOTE BOOK _____
 AREAS CHECKED _____

DATE _____ BY _____
 SURVEYED _____
 PLOTTED _____
 TEMPLATE _____
 NOTE BOOK _____
 AREAS CHECKED _____